



Product Description

MHN-TD

Double-envelope, single- or double-ended Metal halide lamps

Benefits

- All types are UV-Block for reduced health and fading risks

Features

- Quartz discharge tube containing high-pressure mercury and a mixture of dysprosium, holmium and thulium halides (MHN-TD) or tin iodide (MHW-TD), with sodium and thallium added for colour correction and arc stabilisation
- Double-ended lamps housed in a tubular clear UV-Block quartz evacuated outer envelope
- Restricted burning position

Application

- Indoors - accent lighting, general lighting in downlighters, e.g. in shops and malls
- Downlighters, uplighters and wall-washers, e.g. in shops and malls
- Outdoors - floodlighting monuments, facades and billboards

Warnings and Safety

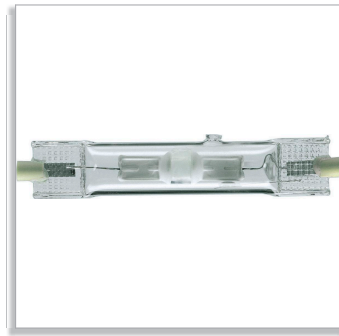
- Use only in totally enclosed luminaire, even during testing (IEC61167, IEC 62035, IEC60598)
- The luminaire must be able to contain hot lamp parts if the lamp ruptures
- Control gear must include end-of-life protection (IEC61167, IEC 62035)
- A lamp breaking is extremely unlikely to have any impact on your health. If a lamp breaks, ventilate the room for 30 minutes and remove the parts, preferably with gloves. Put them in a sealed plastic bag and take it to your local waste facilities for recycling. Do not use a vacuum cleaner.

PHILIPS

Related products

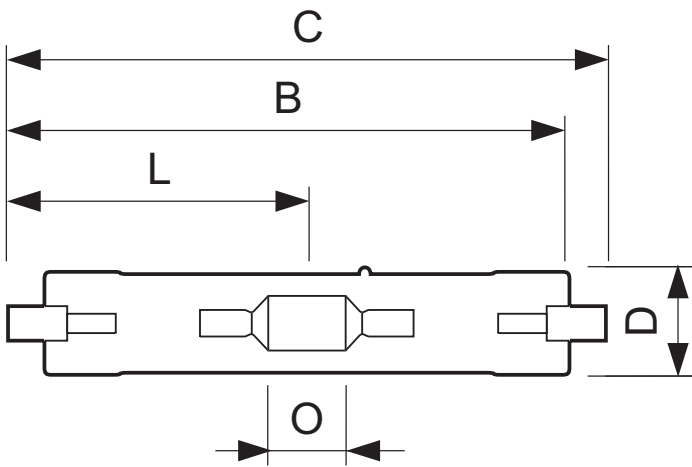


MHN-TD, FC2



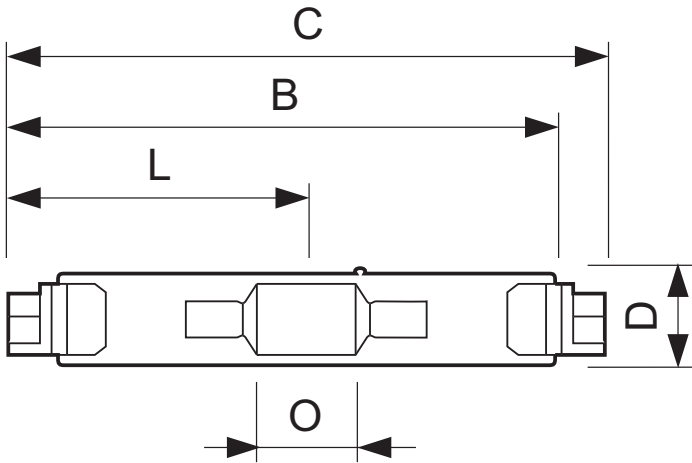
MHN-TD, RX7s

Dimensional drawing



MHN-TD 70W/842 RX7s 1CT

Product	C (Max)	D (Max)	O (Norm)
MHN-TD 70W/842 RX7s	117.6	19.5	7.7
MHN-TD 150W/842 RX7s	135.4	23.0	17.8
MHN-TD 70W/730 RX7s	117.6	19.5	7.7
MHN-TD 150W/730 RX7s	135.4	23.0	17.8



MHN-TD 250W/842 FC2 1CT

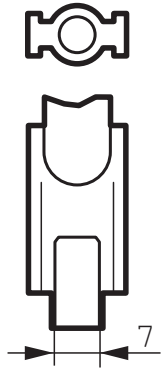
Product	C (Max)	D (Max)	O (Norm)
MHN-TD 250W/842 FC2	161.6	27.5	27

General Characteristics

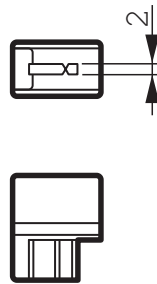
Order code	Full product name	Cap-Base	Bulb	Bulb Finish	Burning Position	Life to 5% failures	Life to 10% failures	Life to 20% failures	Life to 50% failures
734006 15	MHN-TD 250W/842 FC2 1CT	FC2	T27	Clear	p45	5000 hr	hr	7000 hr	9000 hr
215325 00	MHN-TD 70W/842 RX7s 1CT	RX7s	TD	Clear	p45	5000 hr	hr	8000 hr	10500 hr
215363 00	MHN-TD 150W/842 RX7s 1CT	RX7s	TD	Clear	p45	5000 hr	hr	8000 hr	10500 hr

Order code	Full product name	Cap-Base	Bulb	Bulb Finish	Burning Position	Life to 5% failures	Life to 10% failures	Life to 20% failures	Life to 50% failures
215301 00	MHN-TD 70W/730 RX7s 1CT	RX7s	TD	Clear	p45	5000 hr	hr	7000 hr	9000 hr
215349 00	MHN-TD 150W/730 RX7s 1CT	RX7s	TD	Clear	p45	5000 hr	hr	8000 hr	10500 hr

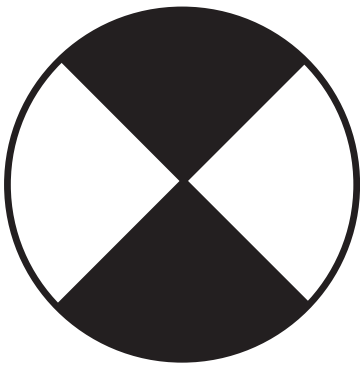
Installation diagrams



RX7s



FC2



p45

Light Technical Characteristics (1/2)

Order code	Full product name	Colour Code	Colour Rendering Index	Colour Designation	Colour Temperature	Lamp Luminous Flux EM	Lamp Luminous Efficacy EM	Lumen Maintenance 2000h	Lumen Maintenance 5000h	Lumen Maintenance 10000h	Design Mean Lumens
734006 15	MHN-TD 250W/842 FC2 1CT	842	85 Ra8	Cool White	4200 K	20000 Lm	80 Lm/W	75 %	70 %	60 %	Lm
215325 00	MHN-TD 70W/842 RX7s 1CT	842	80 Ra8	Cool White	4200 K	5700 Lm	76 Lm/W	85 %	80 %	75 %	Lm
215363 00	MHN-TD 150W/842 RX7s 1CT	842	85 Ra8	Cool White	4200 K	12900 Lm	86 Lm/W	80 %	75 %	70 %	Lm

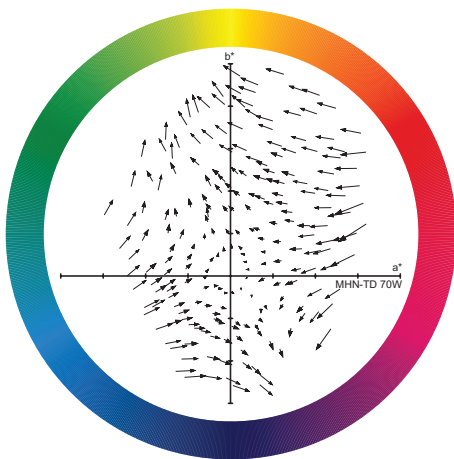
Order code	Full product name	Colour Code	Colour Rendering Index	Colour Designation	Colour Temperature	Lamp Luminous Flux EM	Lamp Luminous Efficacy EM	Lumen Maintenance 2000h	Lumen Maintenance 5000h	Lumen Maintenance 10000h	Design Mean Lumens
215301 00	MHN-TD 70W/730 RX7s 1CT	730	70 Ra8	Warm white	3000 K	6000 Lm	80 Lm/W	65 %	60 %	55 %	Lm
215349 00	MHN-TD 150W/730 RX7s 1CT	730	70 Ra8	Warm white	3000 K	13800 Lm	87 Lm/W	75 %	65 %	60 %	Lm

Light Technical Characteristics (2/2)

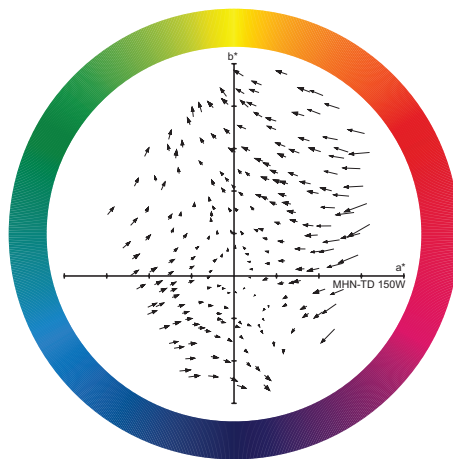
Order code	Full product name	Chromaticity Coordinate X	Chromaticity Coordinate Y
734006 15	MHN-TD 250W/842 FC2 1CT	370 -	370 -
215325 00	MHN-TD 70W/842 RX7s 1CT	370 -	370 -
215363 00	MHN-TD 150W/842 RX7s 1CT	370 -	370 -

Order code	Full product name	Chromaticity Coordinate X	Chromaticity Coordinate Y
215301 00	MHN-TD 70W/730 RX7s 1CT	434 -	400 -
215349 00	MHN-TD 150W/730 RX7s 1CT	434 -	400 -

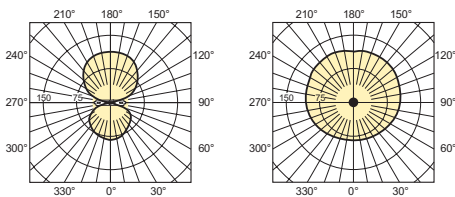
Light technical



MHN-TD 70W



MHN-TD 150W

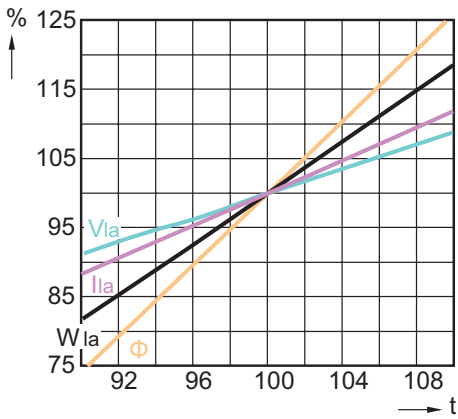


MHN-TD

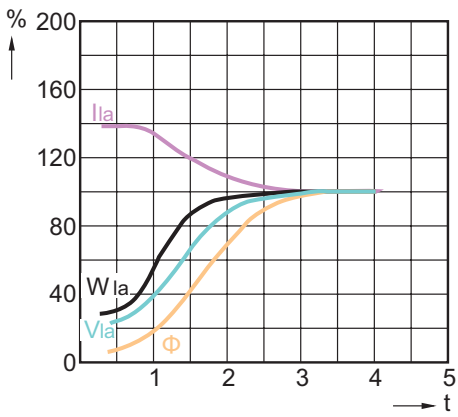
Electrical Characteristics

Order code	Full product name	Lamp Wattage	Lamp Wattage EM 25°C, Nominal	Lamp Wattage EM 25°C, Rated	Lamp Voltage	Lamp Current EM	Dimmable
734006 15	MHN-TD 250W/842 FC2 1CT	250 W	250.0 W	252.0 W	100 V	3 A	no
215325 00	MHN-TD 70W/842 RX7s 1CT	70 W	70.0 W	75.0 W	90 V	1.0 A	no
215363 00	MHN-TD 150W/842 RX7s 1CT	150 W	150.0 W	150.0 W	98 V	1.8 A	no
215301 00	MHN-TD 70W/730 RX7s 1CT	70 W	70.0 W	75.0 W	90 V	0.98 A	no
215349 00	MHN-TD 150W/730 RX7s 1CT	150 W	150.0 W	150.0 W	96 V	1.8 A	no

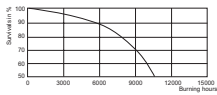
Performance diagrams



MHN-TD



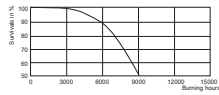
MHN-TD



MHN-TD 70 W, 150

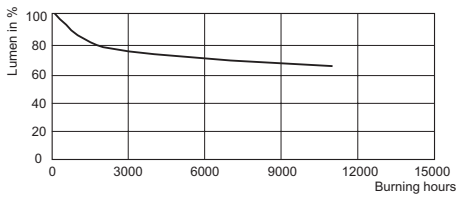
W Life

Expectancy /842

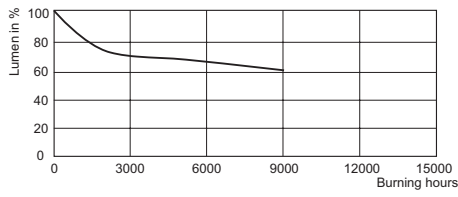


MHN-TD 250 W Life

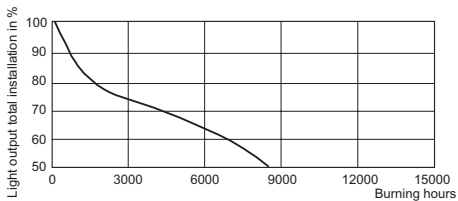
Expectancy /842



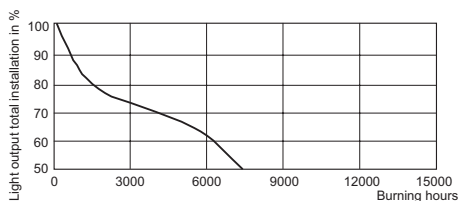
MHN-TD 70 W, 150 W Lumen Maintenance /842



MHN-TD 250 W Lumen Maintenance /842



MHN-TD 70 W, 150 W Service Lifetime /842



MHN-TD 250 W Service Lifetime /842

Environmental Characteristics

Order code	Full product name	Energy Efficiency Label (EEL)	Mercury (Hg) Content	Energy consumption kWh/1000h
734006 15	MHN-TD 250W/842 FC2 1CT	A+	16 mg	277 kWh
215325 00	MHN-TD 70W/842 RX7s 1CT	A	11 mg	82 kWh
215363 00	MHN-TD 150W/842 RX7s 1CT	A+	13 mg	165 kWh
215301 00	MHN-TD 70W/730 RX7s 1CT	A+	13.4 mg	77 kWh
215349 00	MHN-TD 150W/730 RX7s 1CT	A+	12.4 mg	165 kWh

Luminaire Design Requirements

Order code	Full product name	Bulb Temperature
734006 15	MHN-TD 250W/842 FC2 1CT	650 (max) C
215325 00	MHN-TD 70W/842 RX7s 1CT	500 (max) C
215363 00	MHN-TD 150W/842 RX7s 1CT	650 (max) C
215301 00	MHN-TD 70W/730 RX7s 1CT	500 (max) C
215349 00	MHN-TD 150W/730 RX7s 1CT	650 (max) C



© 2015 Koninklijke Philips N.V. (Royal Philips)
All rights reserved.

Specifications are subject to change without notice. Trademarks are the property of Koninklijke Philips N.V. (Royal Philips) or their respective owners.

www.philips.com/lighting

2015, June 12
data subject to change