

A woman with long dark hair, wearing a light blue cardigan, is looking at a large bunch of fresh green herbs in a supermarket aisle. The background is blurred, showing other produce and store lighting.

PHILIPS

Professional lighting

Supermarket



Fresh food delights



The perfect ambience

for a pleasant shopping experience

Shopping online is a cheap, fuss-free and convenient option for customers today. To be successful in driving in-store footfall for retail or 'brick' stores, retailers must give customers many good reasons to visit their physical stores. This is why a multi-sensory retail experience is so important to brands and stores devoted to getting the in-store experience absolutely 'right'.

A typical supermarket in our region can carry between 40,000 to 80,000 skus on average, depending on the store format. Today's customers are more discerning than ever, shopping with their eyes and not solely on their appetites. With quality merchandise and fresh food put forward in great numbers on the shop floor, the right lighting needs to come in for the displays to look attractive.

To influence the average basket size, per customer transaction value and to promote impulse buys and today's hot deals, get your customers to feel comfortable with the most suited lighting in the respective zones. This way, shoppers will spend a longer time in store and most importantly be your long-term customers making repeated purchases, in turn bringing you longer-term revenue.



Taking care of your business, **like our own**

A large store requires careful zoning, and the right focal points must be lit attractively to create a strong 'pull' for customers to go beyond the entrance and trolley bay to venture deep into the store. Our flexible and wide range of Philips lighting solutions can help do that and more. With LED lighting systems and controls, we can help you build a strong brand while saving you energy and running costs.

Reduce energy use – Low energy LED can reduce your energy bills by up to 40%. Combined with controls and smart dimming this can be reduced by a further 35%. We also have smart ways to retrofit our energy-efficient LEDs into existing fixtures, so you can save on installation costs.

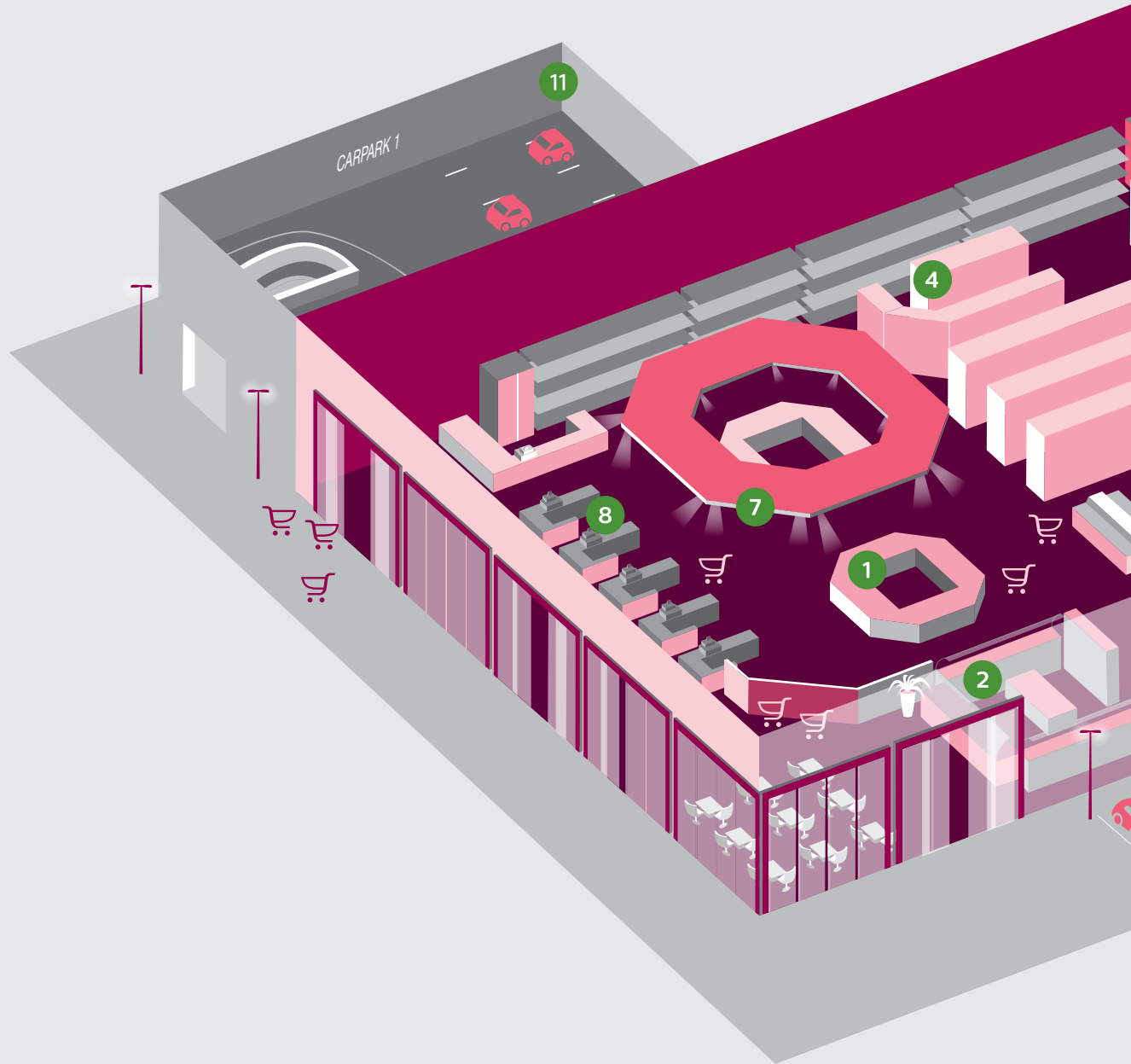
Inspiring customers – Creating the right in-store ambience enhances your customers' shopping experience, encouraging them to explore and buy more. At Philips, we know the art and science of lighting and we are committed to always recommend the best lighting solutions for your fresh food and grocery section, enhancing its appeal and helping your customers shop better.

Staying in control – Our controls for supermarket lighting are now smarter and more engaging than ever. You can set the right scene in each section to enhance displays, save precious energy by using less light during daytime for stores with big glass windows and plenty of natural light. Philips lighting recently announced the world's first major installation of connected lighting system with LED-based indoor positioning for Carrefour, the leading retailer in Europe and the third-largest in the world. The pilot uses energy efficient Philips LED lighting that uses light to transmit a location signal to a shopper's smartphone, triggering an app to provide location-based services. This helps provide targeted promotions and marketing messages to reach shoppers in non-intrusive ways.



Overview

of a supermarket



1

Fruits and vegetables



2

Cheese, bread and pastries



3

Meat and fish



4

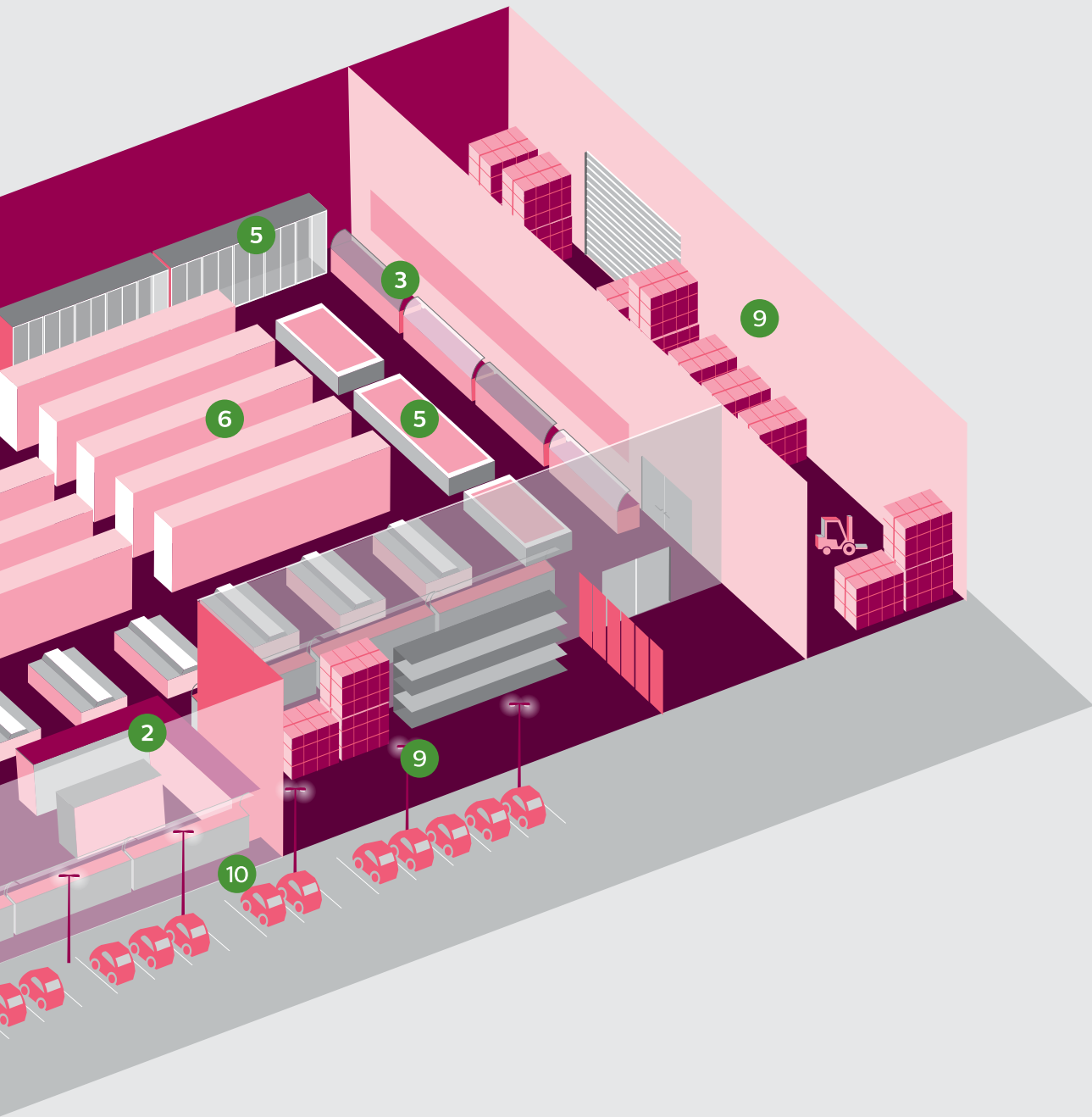
Wines and spirits



5

Freezers and coolers





6

Aisles and shelves



7

Feature ceiling



8

Checkout counters



9

Warehouse and cold store



10

Outdoor parking and façade



11

Indoor parking





A good supermarket keeps its customers coming back with its wide selection of choices and how fresh everything is presented. A budding chef or a professional cook, can both visit the store for inspiration, to check out the best ingredients of the day to plan their menu and create delightful meals. This is also the place where the magic of light comes to play. Lush greens, luscious reds, bright yellows and vibrant oranges represent quality food, which can be enhanced with authentic white LED and special optics designed for the perfect fresh food displays. Controls also help preserve the natural goodness of fresh produce, settings can be programmed to be slightly dimmer during off-peak hours, and timed to perk shoppers up during high traffic hours. Even with high-powered appliances operating round the clock, energy-efficient LEDs can keep electric bills and the company's carbon footprint down.



Fruits and vegetables

As fresh as can be





Breads and pastries are often presented in an appetizing spread on inclined shelving surfaces or elegant bread baskets requiring the right light to be directed without causing glare. Good presentation under the best lighting can help increase sales and direct the shoppers' attention away from price but towards the quality of the crisp pastry and the perfect sugar glaze. For delicate products like cheese, lighting is essential but protection against heat and UV rays is critical. This is where quality LED light can help ensure freshness while reducing any negative impact to perishables to a minimum.



GreenPerform
Batten



GreenPerform
Trunking



LuxSpace LED
Accent



Stylid 3



Cheese, bread and pastries

Freshly baked goodness

Meat and fish

Worthy of 5-star dining





Beautifully marbled meat. Fish gleaming as if just caught at sea. Their attractiveness and shelf life significantly improve in visually cool rooms. Warm white light with a subtle red glow allows meat to look its very best, while in tests conducted by Philips with meat sellers, LED Rose range can help extend the shelf life of sliced meat by up to 30%, compared with conventional white SON lamps. LED Authentic White lights up meats more naturally, ensuring customers can see clearly and shop safely for the right products. With time-based and easy to operate programmable controls like Philips Dynalite, you can be sure that your zones and showcases are always lit at the most appropriate levels. With a wide assortment of LED lighting, energy savings of 30% or more can easily be achieved.



GreenPerform
Trunking



GreenPerform
Batten



LuxSpace LED
Accent



StyliD 3

PHILIPS
dynalite 

A photograph of a supermarket aisle with a person walking, blurred to indicate motion. The aisle is lined with glass-fronted freezers and coolers. The ceiling has recessed lighting, and the floor is tiled. The overall atmosphere is bright and clean.

Freezers and coolers

A cool but inviting zone



Customers appreciate a well-stocked chiller and freezer section that has everything they need: milk and other dairy products, pre-packed meats, frozen foods, fruit juices and sodas, etc. As this is an area filled with 'glass' showcases, direct and indirect led lighting fixtures on the ceilings and cove lighting are suitable to provide comfortable light, with minimal glare.

Philips LEDs on a higher Kelvin scale or in cool daylight color temperature can help enhance the look of cold foods and are suitable for this section. What's more, they give you a double win: apart from making the products more visible and more attractive, they also deliver up to 70% in energy costs compared to fluorescent lamps. They contain no mercury or lead, and significantly reduces CO2 emissions.



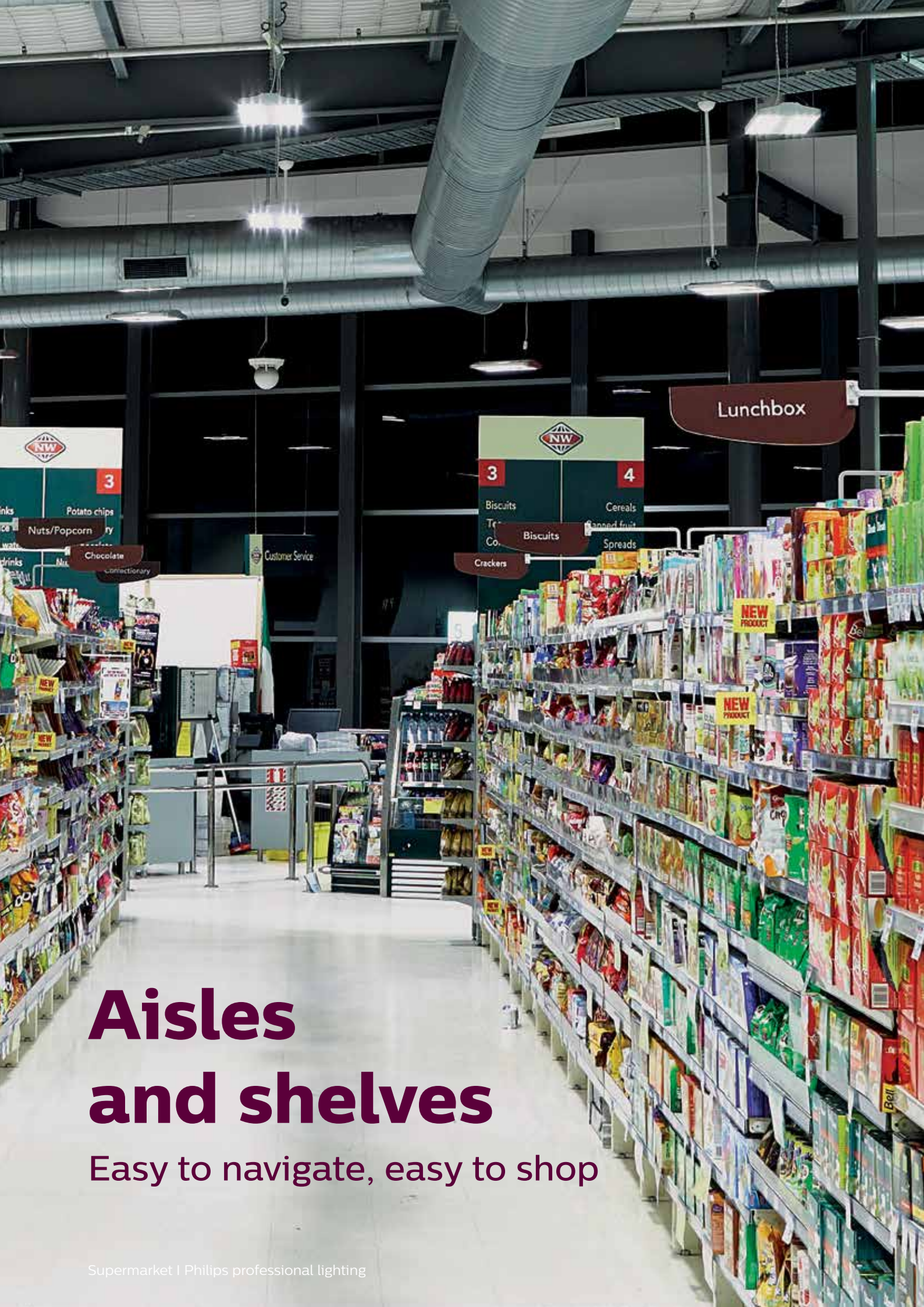
GreenPerform
Batten



GreenPerform
Trunking



LEDtube T8



Aisles and shelves

Easy to navigate, easy to shop



A good store should come with pleasant and comfortable lighting, allowing customers to easily navigate and shop under clear lighting conditions. Customers can be drawn deep into the store with great lighting accents making each zone inviting and refreshing. Trunking systems, battens, downlights, spots, troffers and led tubes are amongst some of Philips quality solutions allowing the right illumination for each zone while giving you energy savings, reduced maintenance costs for the long run, and great comfort for your customers. For hypermarkets and supermarkets with high ceilings, high bay luminaires such as the award-winning GreenUp Highbay DALI or fixed versions can be integrated at suitable quantities to deliver up to 75% energy savings. Intelligent controls allowing daylight harvesting can be effected, and its three optic lens design options can suit multiple applications.



GreenPerform Batten



GreenPerform Trunking



GreenUp Highbay

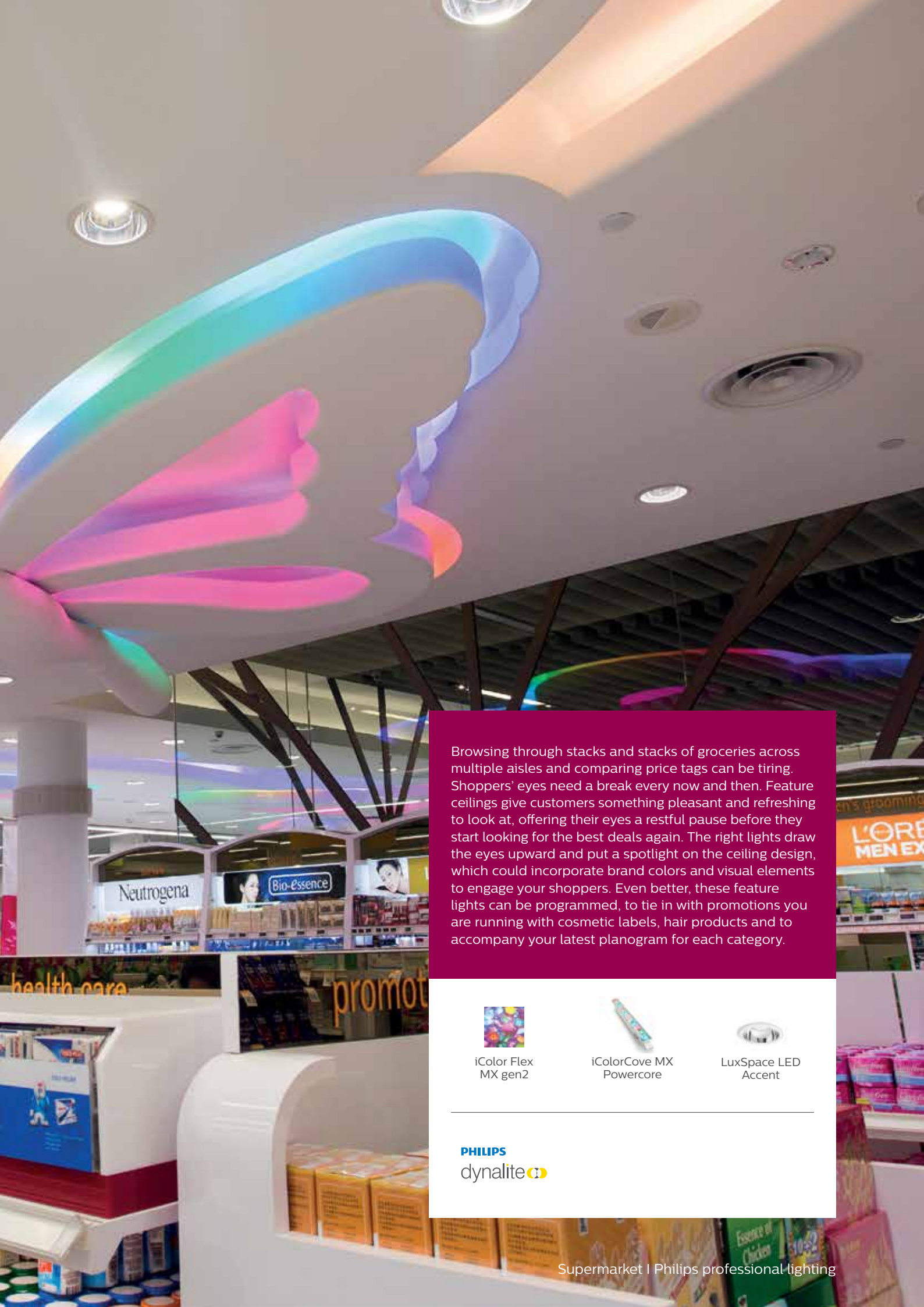


GreenPerform Highbay

Feature ceiling

Add interest and elevate the experience





Browsing through stacks and stacks of groceries across multiple aisles and comparing price tags can be tiring. Shoppers' eyes need a break every now and then. Feature ceilings give customers something pleasant and refreshing to look at, offering their eyes a restful pause before they start looking for the best deals again. The right lights draw the eyes upward and put a spotlight on the ceiling design, which could incorporate brand colors and visual elements to engage your shoppers. Even better, these feature lights can be programmed, to tie in with promotions you are running with cosmetic labels, hair products and to accompany your latest planogram for each category.



iColor Flex
MX gen2

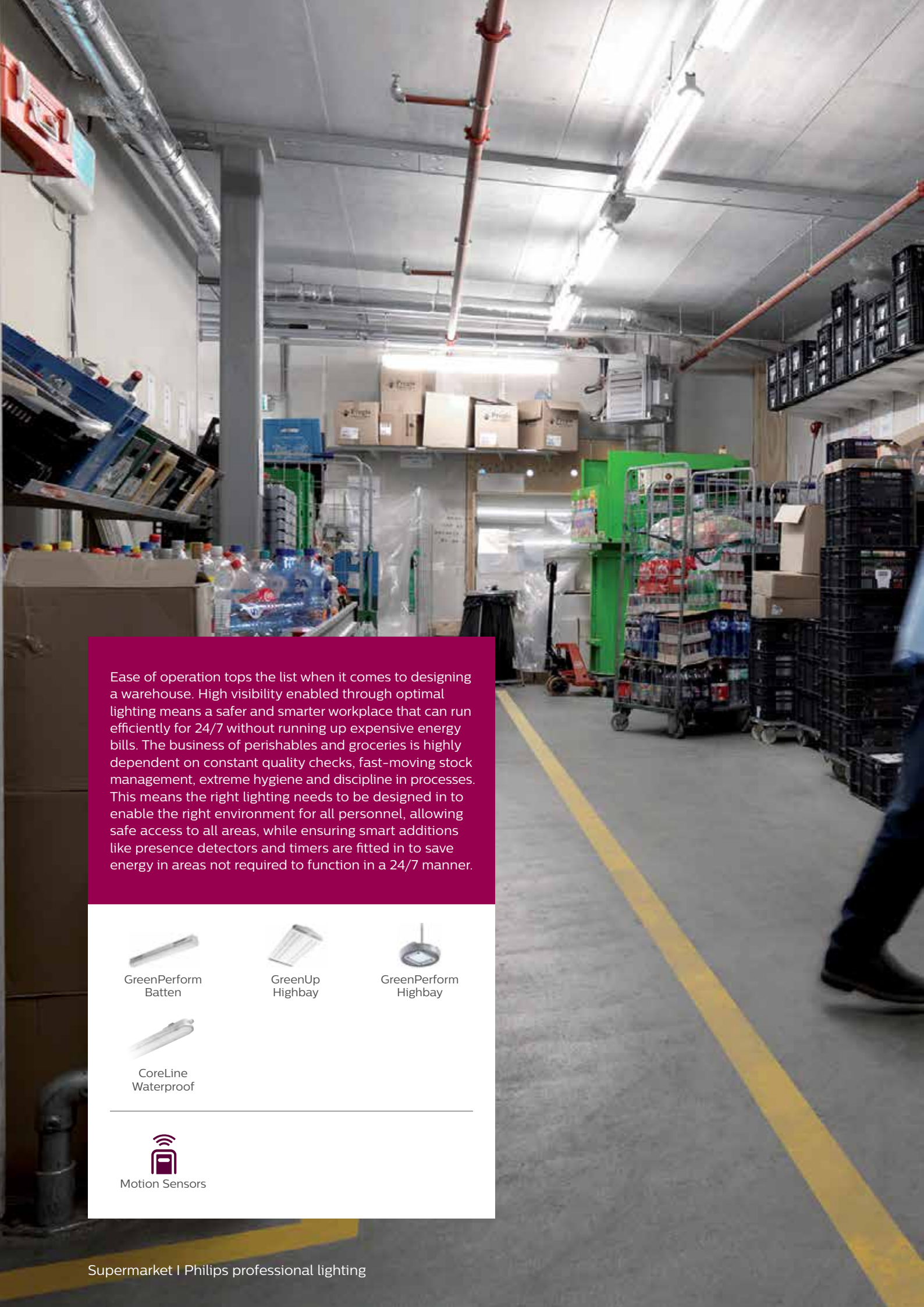


iColorCove MX
Powercore



LuxSpace LED
Accent

PHILIPS
dynamilite



Ease of operation tops the list when it comes to designing a warehouse. High visibility enabled through optimal lighting means a safer and smarter workplace that can run efficiently for 24/7 without running up expensive energy bills. The business of perishables and groceries is highly dependent on constant quality checks, fast-moving stock management, extreme hygiene and discipline in processes. This means the right lighting needs to be designed in to enable the right environment for all personnel, allowing safe access to all areas, while ensuring smart additions like presence detectors and timers are fitted in to save energy in areas not required to function in a 24/7 manner.



GreenPerform
Batten



GreenUp
Highbay



GreenPerform
Highbay



CoreLine
Waterproof



Motion Sensors



Warehouse and cold store

Safety and efficiency above all

Fruits and vegetables



Freezers and coolers



Cheese, bread and pastries



Aisles and shelves



Meat and fish



Feature ceiling



Wines and spirits



Checkout counters



Outdoor parking and façade



Indoor parking



We've got you covered

As your lighting solutions partner, we aim to give you complete one-stop solutions that can maximize your investment. We can customize our solutions and professional services to meet your specifications, standards and budgets. What's more, we stay ahead of lighting trends to make your stores as enticing for your shoppers as possible.



RoadGrace



CoreLine
Waterproof



GreenPerform
Batten



GreenPerform
Trunking



LuxSpace LED
Accent



GreenUp
Highbay



StyliD 3



GreenPerform
Highbay



Tango G2
LED Floodlight



LEDtube T8



iColor Flex
MX gen2



iColorCove MX
Powercore

Experiences redefined

We all wish to achieve the best in our stores, and we know today's shoppers are always expecting more. The combination of reliable and quality LED lighting together with advanced controls can help define and uplift retail experiences to a higher level. Improving the brand, driving traffic and conversion, and ultimately boosting sales.



PHILIPS
dynalite

Dynalite: **The intelligent choice**

Dynalite system allows you to create various programmable ambience and lighting scenes to suit the mood and the occasion. Our luminaires can be configured to work with the Dynalite controls in simple to sophisticated ways. Flexible and easy to install, this makes a scalable system which can partner with temperature controls, building management systems, utility monitoring, audio-visual, blinds and windows and more.



OccuSwitch: **Maximum savings, minimum effort**

The OccuSwitch range enables a fast payback period, a low cost of ownership and in practical ways, allows you to comply with the latest building directives. Wireless versions are also available, with the battery-powered ceiling mounted sensors communicating to a relay box (actuator). Commonly specified in retail, supermarkets, warehousing and office projects, this easy retrofit system can be set up instantly and effortlessly, without disrupting day to day operations.

A perfect match

Food and lighting experts will always recommend the best LED lighting for the appearance of fresh foods to be accurately represented, at the same time minimizing discoloration due to harsh lighting. Here are some of the best choices put forward by our in-house experts.

LED Champagne

Applied to racks and shelves displaying cheese and bread, LED champagne gives out a warm and organic light enhancing the yellow tones, instantly coating otherwise plain and dull bread and pastries in a better light.



LED Rose

Ideal for meat and poultry displays, LED rose is cool and emits little heat, thus minimizing discoloration in meats and stretches the product shelf life by up to 30%. Enabling customers see better, and shop better.



LED Frost White

Recommended as the top lighting choice to accompany fresh fish and seafood displays, LED frost white gives out crisp, white light that enhances the natural sparkle of your fresh and shiny catch from the sea, displayed attractively on beds of ice.



LED Authentic White

A versatile light source and an industry all-rounder, LED authentic white from Philips enhances the color of meats in a subtle way, while improving the merchandising displays for fruits, vegetables and all things bright and beautiful.

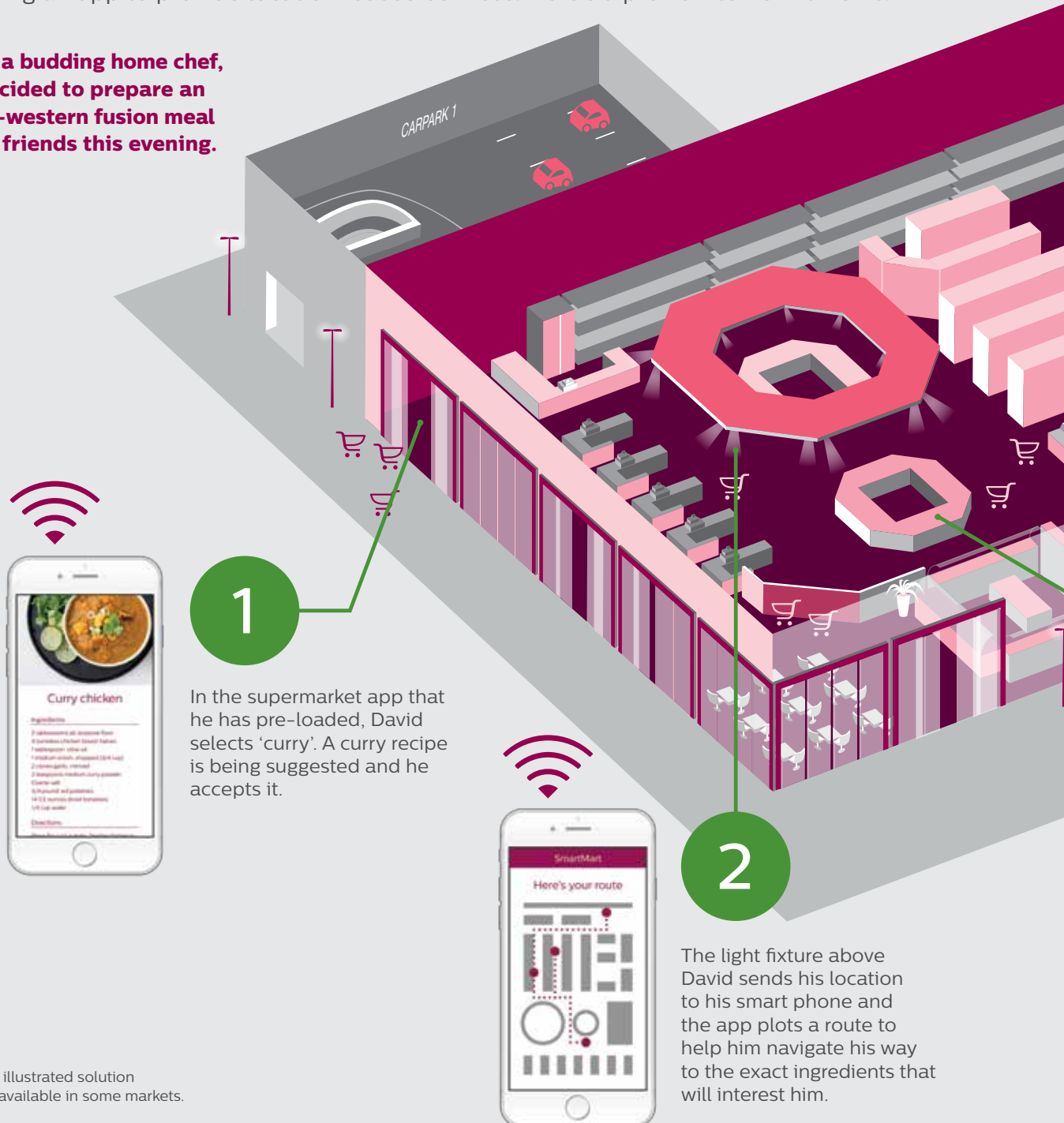


Note: The solution is not yet available in some markets.

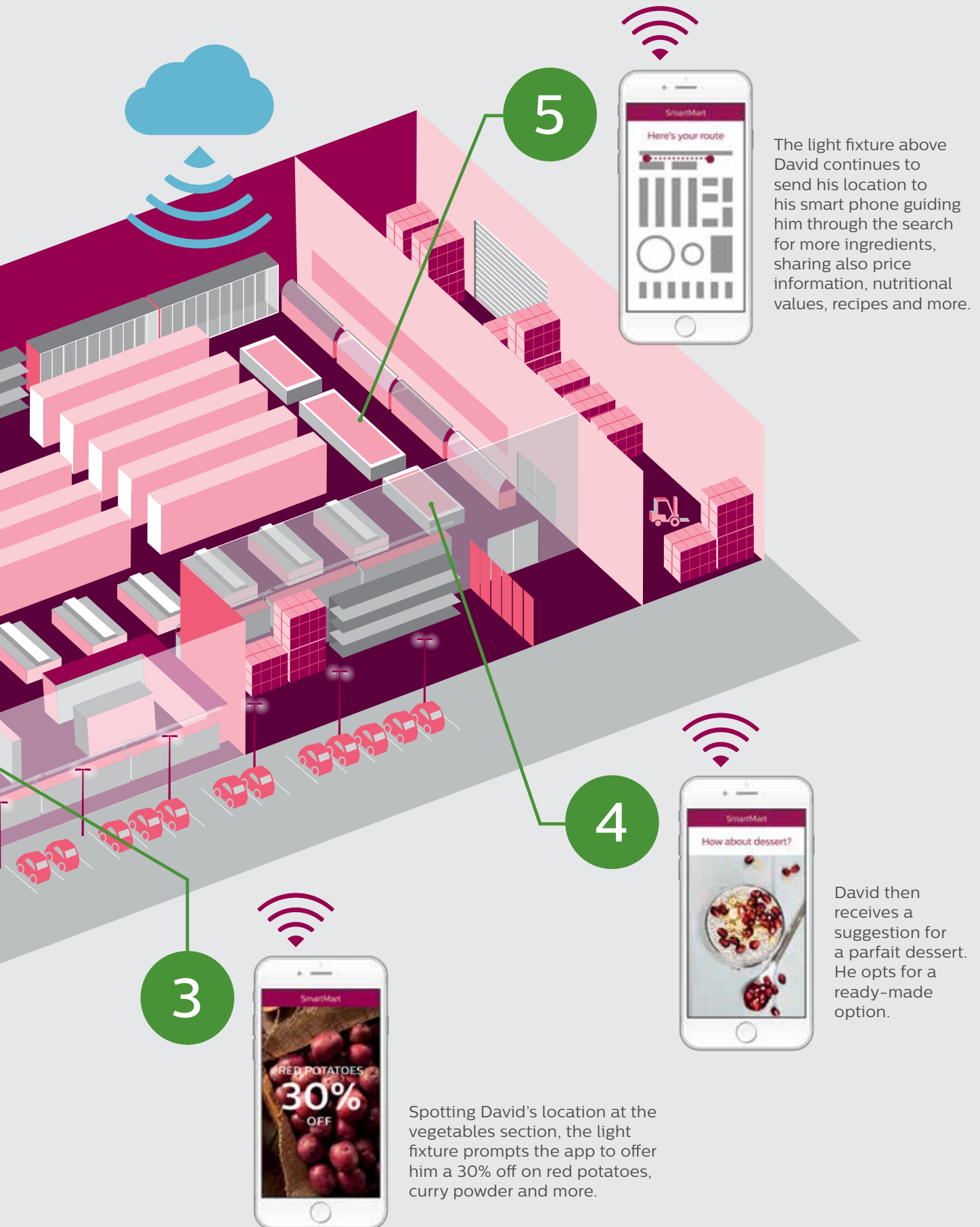
Connected lighting for innovative supermarkets

At Philips, we have recently announced the world's first major installation of our connected lighting system with LED-based indoor positioning for Carrefour, France. Energy efficient Philips LED lighting can now use light to transmit a location signal to a shopper's smartphone, triggering an app to provide location-based services. Here's a preview to how it works.

David, a budding home chef, has decided to prepare an indian-western fusion meal for his friends this evening.



Note: The illustrated solution is not yet available in some markets.



3



Spotting David's location at the vegetables section, the light fixture prompts the app to offer him a 30% off on red potatoes, curry powder and more.

4



David then receives a suggestion for a parfait dessert. He opts for a ready-made option.

5

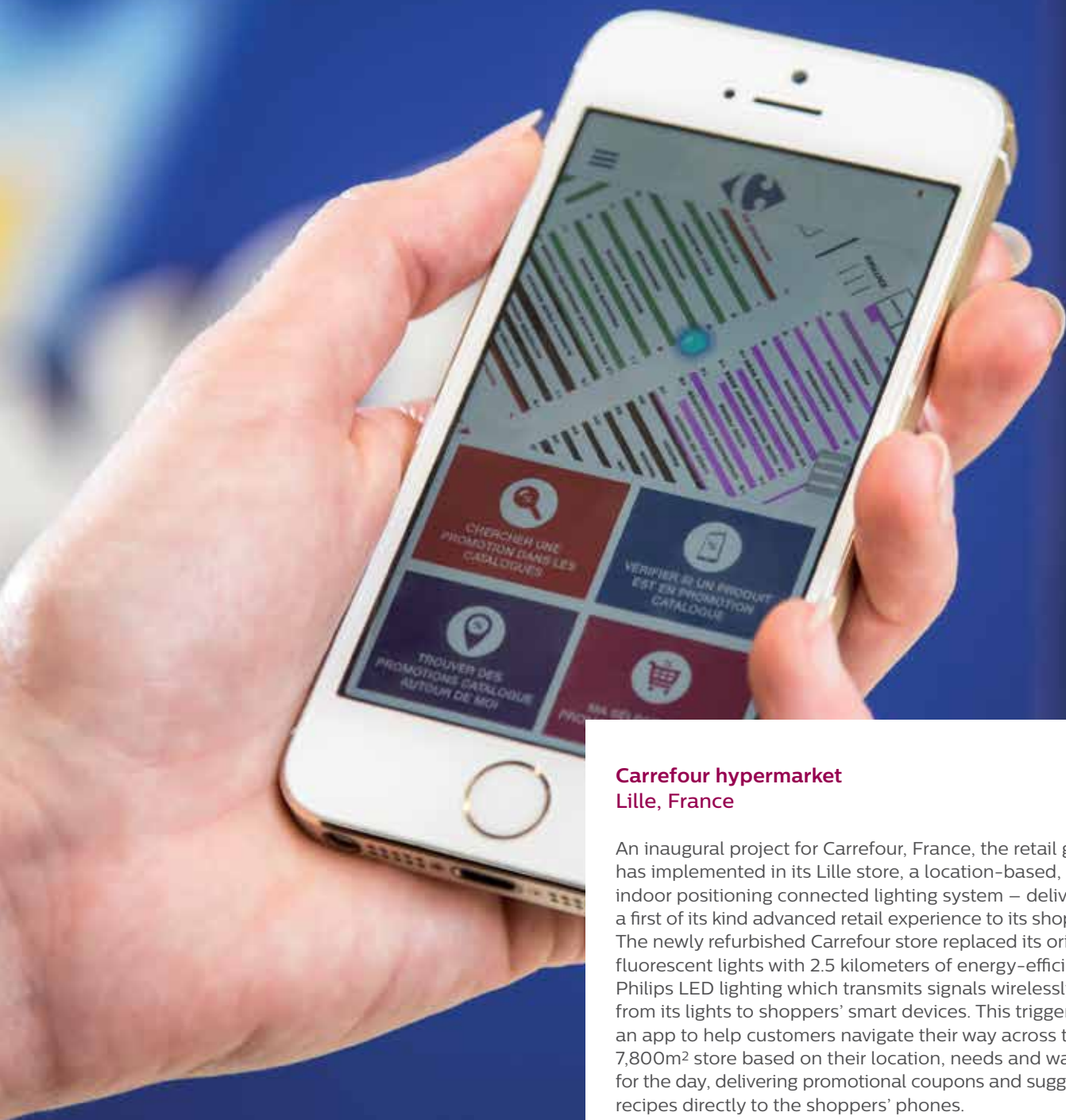


The light fixture above David continues to send his location to his smart phone guiding him through the search for more ingredients, sharing also price information, nutritional values, recipes and more.

Enjoyable experiences





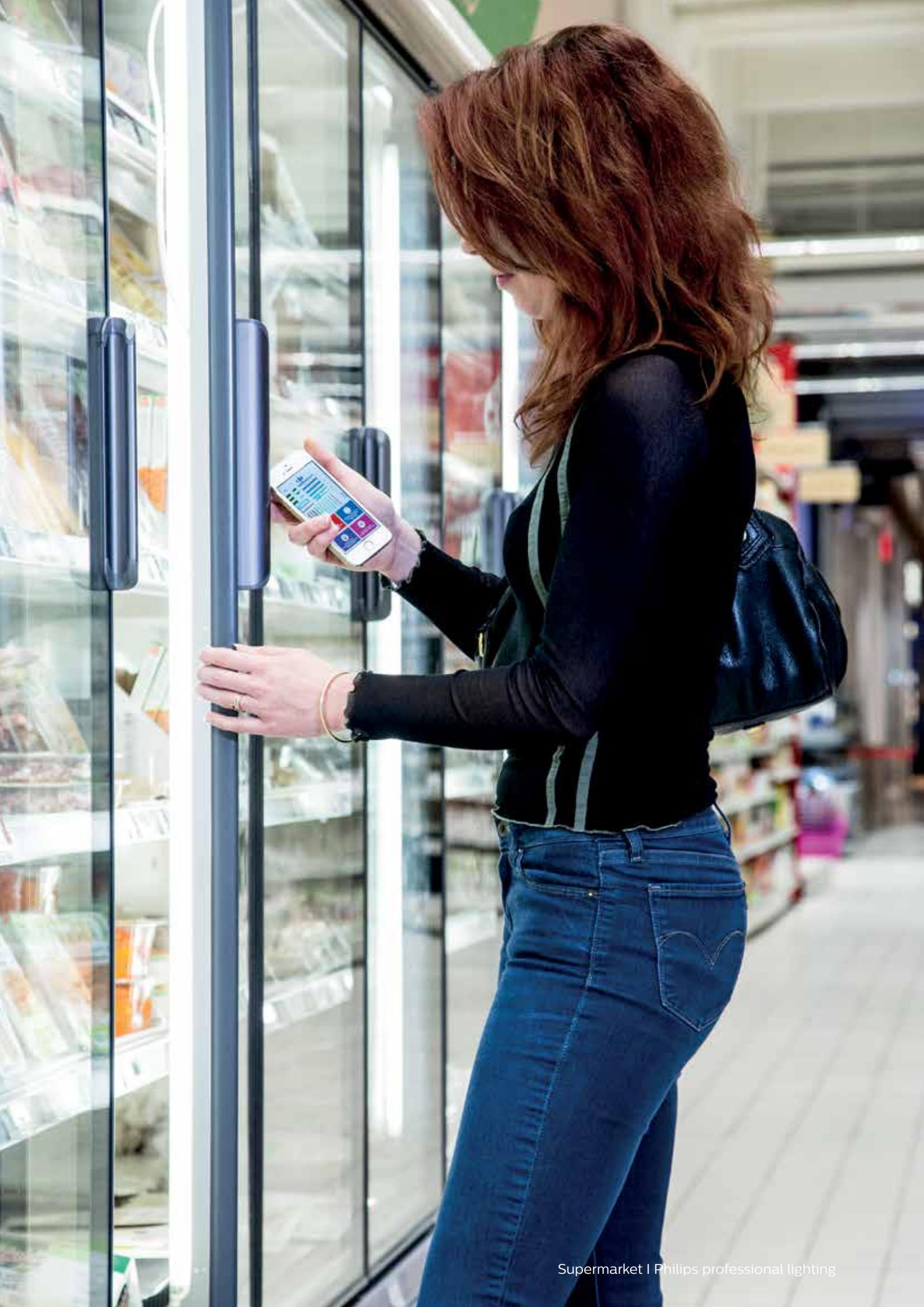


Carrefour hypermarket Lille, France

An inaugural project for Carrefour, France, the retail giant has implemented in its Lille store, a location-based, indoor positioning connected lighting system – delivering a first of its kind advanced retail experience to its shoppers. The newly refurbished Carrefour store replaced its original fluorescent lights with 2.5 kilometers of energy-efficient Philips LED lighting which transmits signals wirelessly from its lights to shoppers' smart devices. This triggers an app to help customers navigate their way across the 7,800m² store based on their location, needs and wants for the day, delivering promotional coupons and suggested recipes directly to the shoppers' phones.

The system uses patented Philips VLC (Visible Light Communication) technology to transmit a unique code via light, that can be picked up by the camera of a smart phone or device. As part of the installation, Philips software and a cloud-based location database were integrated into Carrefour's mobile application. This game-changing innovation has elevated shopping into a more personalized and interactive experience, enabling a clear differentiation for the store, enhancing customer loyalty as well as bringing energy savings of 50% to the supermarket.

Note: This solution is not yet available in some markets.







Fairprice Finest Zhongshan Mall, Singapore

Singapore's largest supermarket chain, Fairprice, is widely recognized for its great merchandising as well as its conscious effort to minimize the company's carbon footprint. With a line up of more than 270 stores, requiring complex refrigeration and an extensive distribution network, it was equally important for Fairprice to adopt energy-efficient LED lighting solutions to ensure its business stays 'green' while its operations are efficient and rarely disrupted. At its Fairprice Finest store located at Zhongshan mall, Philips Luxspace LED downlights were specified to deliver a pleasant, long-lasting and consistent light output that is comfortable for shoppers and cashier teams alike. Color-changing iColor cove lighting by Philips highlighted the unique butterfly-themed cove designs above the Health and Beauty zone, while LED strips and cove lighting offered the fresh food and wine sections soft, white lighting that elegantly lit up the area.

With Philips LED lighting, FairPrice was able to achieve the desired look for its new store whilst reducing the energy consumption. This eco-friendly initiative enabled electricity savings, and also led the Fairprice Finest store at Zhongshan mall to become the first recipient of the Building Construction Authority (BCA) Green Mark Platinum Award in the supermarket category.

JUMBO
food
markt

Vers fruit
Dagelijks gesneden en geperst

goedkoop

JUMBO
food
markt

Verse
kruiden

Vrolijk
en een smakelijke



**Jumbo Foodmarkt
Breda, Netherlands**

Jumbo Foodmarkt is a dream store with an area of 6,000m², over 400 daily staff, and 35,000 products. With cheese boards made to order, a large chocolatier, and 40 chefs preparing fresh meals, among others, the market is an absolute shopping and culinary experience with the most extensive assortment in the Netherlands. That's why Jumbo pulled out all the stops to invest in the very best sustainable lighting – and decided Philips was the perfect lighting partner.

Philips designed a unique 100% LED solution that earned Jumbo Foodmarkt the distinction of being the world's first retail store to use ExactEffect LED spotlights. Hanging from a grid in the fresh produce section, the spotlights delivered very appealing, high-contrast atmospheric lighting. The optimum light distribution and accents from the matching hanging lamps gave the various kitchens their own identity. For the groceries section, an anti-dazzle LED lighting line created a calming atmosphere.

The results: 25% less electric consumption, and significantly lower maintenance and replacement costs – an important advantage since many spotlights were in difficult to reach places. By using the very latest solutions, Jumbo needed fewer luminaires than usual, yet created an unsurpassed atmosphere.



EATING AND DRINKING NOT ALLOWED INSIDE THE SELLING AREA



Liana's Supermarket and Department Store Batangas, Philippines

Setting the standards for in-store lighting, Liana's Supermarket in Santo Tomas, Batangas became the first supermarket in the Philippines to use 1,200 units of Philips Master LED tubes.

While other Liana's Supermarket branches traditionally used 40 watt fluorescent lighting, owner and operator Ms. Helen Sy-Chua decided to make the switch to LEDs for the new branch to maximize long-term savings.

The switch to LED yielded many remarkable benefits for the store. Aesthetics were improved and an energy reduction of more than 50% was observed. With the extra-long lifetime of 40,000 hours, when comparing Master LED tubes with traditional fluorescents, this also meant a reduction in maintenance needs and a drop in running costs. The LEDs provide uniformly distributed lighting superior to that of CFLs, and the atmosphere is now brighter and more refreshing to both shoppers and store team. The day's freshest picks are looking better while the store continues to clock in more savings and do its part for the environment.



Tengelmann Klimamarkt Mülheim, Germany

Tengelmann AG is a leading supermarket chain that owns more than 700 stores and over 19,000 employees. Tengelmann klimamarkt effected a model eco grocery store in line with its commitment to the environment, and sought to fit in the best LED lighting and technology within its store design. Specific requirements included a need to build in intelligent controls, interacting between artificial LED lighting and natural daylight, while new reflectors were to be integrated with energy-efficient accent lighting to uplift the ambience of the store.

Philips Lighting came on board and customized an AmbiScene concept for this store, using a combination of modern, energy-efficient LED technologies that incorporated the latest optical systems and intelligent controls. The result: this eco store's lighting consumption went down from approximately 22W to 11.6W per square meter. Setting new standards within the industry not just in terms of aesthetics, but in an eco-friendly and forward looking approach.





Aceites
Vinagres

Arozces
Pastas

¡oferta!


si!
oferta **1,39**

¡oferta!

¡oferta!

7€

Suchard
Necha
Sweet
Suenos
3,99



Consum Supermarkets Valencia, Spain

One of Spain's largest supermarket chains and always at the technological forefront within the food sector, Consum engaged the help of Philips lighting, to make a smart switch to LEDs in its stores.

With the excellent light quality of Master LEDtubes, Consum and Philips found the ideal replacement for traditional fluorescent lighting, which achieved an energy savings of more than 45% for the store. For accent lighting, Philips suggested a combination of LuxSpace Accent 40W and 65W, which allowed stable adjustment and a secure fixture angle. For the walls and the cooler cabinets, Master LEDtubes SA were used, which had the proper optics and sealing for this application, and earned more than 65% in terms of energy savings.

The final results were equally appreciated by the store and its shoppers, with comfortable and clear lighting making the store easy on the eyes, while the eventual energy savings came up to an estimated 65%. With the lights expected to last beyond 10 good years, say hello to reduced maintenance needs, money savings and a happier, greener store.

Beyond illumination







Support from start to finish

With offices around the world, we have extensive experience handling lighting challenges on behalf of our customers. We aim to be your best business partner, offering the right expertise and solutions. Allow us to help you with planning, implementing and maintaining your project every step of the way.



Advisory Services

Can a lighting upgrade help your business grow? Get an expert light audit from Philips Advisory Services

- Auditing your energy consumption
- Bringing creative ideas to life
- Helping you plan, making it happen
- Helping you convince the team



Project Services

Get your lighting installation completed quickly and efficiently, with Philips Lighting Project Services

- Project management
- Installing your system
- Integrating and programming
- Lighting performance contracts
- Energy savings projects



Lifecycle Services

Let Philips handle your installation with service agreements that can be tailored to your needs. These could include:

- Helpdesk, remote diagnostics and fault investigation, system health checks and spare parts replacement
- Qualified service engineers for preventive and corrective maintenance of your installation
- Asset management, data analytics and consultancy, system optimization and more



Philips Lighting Capital

Finance your new lighting system with little to no upfront investment

- Protecting your cash flow
- Saving you time and money

Note: Certain services may not be available in all countries. Kindly check with your local Philips representative for details.

Spotlight on our products

A quick overview of Philips lighting solutions - features and benefits.

For more information, visit www.philips.com or contact our sales team.



GreenPerform Batten

High-quality LED batten with a high system efficacy of up to 50% in energy savings compared to fluorescent battens

- Reliable and high quality with robust housing of long lifetime
- With flexible optics and mounting accessories, suitable across a variety of applications
- Good color uniformity and high vertical illuminance



GreenPerform Highbay

Designed to replace 250W and 400W Philips MH highbays, the GreenPerform Highbay provides up to 60% energy savings and reduces glare by as much as 20%.

- IP65 protection and 50,000 hrs @ L70
- Advanced control interface
- Easy to install with 3m long power cord and IP65 connector



CoreLine Waterproof

The CoreLine Waterproof is perfect in applications where there's moisture in the air, such as areas around freezers or in covered carparks.

- Up to 50% more energy efficient compared to Philips TL-D
- Direct substitute to conventional water-proofs
- Sleek design
- Wide-beam light distribution



LEDtube

Value-for-money and high cost-performance LED tube that delivers uniform light output, superior colors and reduced need for maintenance

- Energy savings of up to 60% compared to fluorescent lamps
- No IR/UV
- Instant-on
- Comfort to the eyes
- Long lifetime of up to 40,000 hrs
- Suitable for relamping and new projects



StyliD

StyliD helps you deliver cost savings and create a better customer shopping experience.

- User friendly, advanced controls
- Smart dimming maximises energy savings
- Improved in-store ambience
- Reduce energy 'peaks' at switch-on times



GreenPerform Trunking

Modular design for flexible installation. With power cable, multi-channel design for standalone control. For over 100m successive installation with high linearity

- Energy savings of up to 50%
- High quality, uniform and continuous end-to-end light
- Choice of 3 beam angles for optimal light distribution



LuxSpace Accent

The perfect combination of efficiency, light comfort and design, without compromising on lighting performance (color rendering and color uniformity). With a wide choice of options for creating the desired ambience across various applications

- Best-in-class efficacy
- A gentle, natural light for visual comfort
- Perfect integration with the ceiling thanks to the thin, narrow rim; rimless version ideal for integration into plaster ceilings
- Choice of four optics: high-gloss, faceted, matt and white



Dynalite

Dynalite system allows you to create various programmable ambience and lighting scenes to suit the mood and the occasion

- Luminaires can be configured to work with the Dynalite controls in simple to sophisticated ways
- Flexible and easy to install, a scalable system, which can partner with temperature controls, building management systems, utility monitoring, audio-visual, blinds and windows and more
- Control and monitor from any point on the network and generate system status reports

	Fruits and vegetables	Cheese, bread and pastries	Meat and fish	Wines and spirits	Freezers and coolers	Aisles and shelves	Feature ceiling	Checkout counters	Warehouse and cold store	Outdoor parking and façade	Indoor parking
GreenPerform Batten	●	●		●	●	●		●			
GreenPerform Trunking	●	●	●		●	●					
GreenSpace LED Downlight G4	●		●	●	●			●			
GreenSpace Power			●					●			
LuxSpace LED Downlight G4	●	●		●				●			
SmartBright Mini LED Dimmable Downlight G2							●				
GreenAccent G2		●	●								
FlexAccent	●			●							
GreenUp Highbay						●			●		
GreenPerform Highbay									●		
SmartBay						●					
SmartBright Highbay						●					
GreenUp Waterproof									●		●
GreenPerform Waterproof									●		
SmartBright LED Waterproof											●
SmartBright LED Troffer G2		●									
Essential SmartBright LED Floodlight										●	
Tango G2 LED Floodlight										●	
Vaya Linear LP/MP						●				●	
LEDtube	●	●	●		●	●		●			●
iColor Flex MX gen2							●				
iColorCove MX Powercore							●				
GreenVision Xceed										●	
CoreLine Waterproof					●				●		●
RoadGrace										●	

Notes



©2015 Koninklijke Philips N.V.

All rights reserved. Reproduction in whole or in part is prohibited without prior written consent of the copyright owner. The information presented in this document does not form part of any quotation or contract, is believed to be accurate and reliable and may be changed without notice. No liability will be accepted by the publisher for any consequence of its use. Publication thereof does not convey nor imply any license under patent – or other industrial or intellectual property rights.

Philips Lighting New Zealand
Level 3, 123 Carlton Gore Road
Newmarket, Auckland 1023
New Zealand
Ph: 0800 454 448 / 0800 4LIGHT
connected.nz@philips.com
www.philips.co.nz/lighting

Philips Lighting Australia
A sector of Philips Electronics
Australia Limited, 65 Epping Road,
North Ryde 2113, Australia
Ph: 1300 304 404
retailighting@philips.com
www.philips.com.au/lighting