

# PHILIPS Day-Brite CFI

Recessed

EvoGrid 1x4

with tunable white  
technology  
3700/4500/5000 lm



Project: \_\_\_\_\_  
Location: \_\_\_\_\_  
Cat.No: \_\_\_\_\_  
Type: \_\_\_\_\_  
Lamps: \_\_\_\_\_ Qty: \_\_\_\_\_  
Notes: \_\_\_\_\_

Philips Day-Brite / Philips CFI EvoGrid LED recessed utilizes highly reliable and efficient Philips LED platform boards and dimmable driver enabling market leading performance in its category. Its soft opal diffuser with large luminous area minimizes apparent brightness compared to other basket luminaires and provides general lighting perfect for a wide variety of applications. Tunable white light allows color temperature flexibility between 2700K and 6500K CCT.

## Ordering guide

Example: 1EVG37L8TW-4-D-UNV-DTW

Width	Family	Ceiling Type	Lumens	Color	Length	Center Diffuser	Voltage	Driver	Options
1	EV	G		8TW	4	D	UNV	DTW	
1 1'	EV EvoGrid	G Grid	<b>37L</b> 3700 nominal delivered lumens <b>45L</b> 4500 nominal delivered lumens <b>50L</b> 5000 nominal delivered lumens	<b>8TW</b> 80 CRI, 2700K thru 6500K white light tuning	4 4'	D Diffuse (opal)	<b>UNV</b> Universal Voltage, 120-277 volt	<b>DTW</b> Dual channel tunable white	<b>EMLED</b> Integral emergency, 1100lm nominal, 6500K color circuit only <b>F1/D</b> 3/8" twin flex, 3 wire 18 gauge 6' for dimmable luminaires <b>F2/7W</b> 3/8" single flex, 7 wire 18 gauge 6' for dimmable luminaires <b>GLR</b> Fusing, fast blow

## Accessories (order separately)

- **FMA14** – 1'x4' "F" mounting frame for NEMA "F" mounting
- **EVD14L** – EvoGrid 4' replacement lens

# 1EVG EvoGrid LED recessed 1x4

with tunable white technology, 3700/4500/5000 lumens

---

## Application

- A highly efficient, visually comfortable, architecturally styled recessed LED luminaire designed with a minimalistic strategy to achieve sustainable objectives.
- Low profile standard configuration is only 2-7/8" deep requiring minimal plenum space. Integral emergency (EMLED) configuration is 4-1/8" deep.
- Soft opal diffuser with large luminous area minimizes apparent brightness and provides high visual comfort perfect for a wide variety of general lighting applications like offices, schools, retail, or healthcare.
- Multiple lumen packages over a wide range to provide significant application flexibility over light levels and/or luminaire spacing.
- Directs a controlled amount of light to the higher angles in the room to balance the brightness of the surfaces and eliminate "cave effect" while creating the impression of a larger, brighter space without glare.
- Excellent color rendering with a CRI of 80.
- Designed for use with standard Grid (NEMA "G") or Narrow Grid (NEMA "NFG") ceiling T-bars. Drywall or plaster requirements can be accommodated by using an FMA14 "F" mounting frame (sold separately.)
- Continuous row mount option (CRM) includes wireway covers on each end and on one side of housing.

## Construction/Finish

- Uncomplicated design is 2-7/8" (standard configuration) in depth and only requires a few parts outside of the electrical system and hardware, creating several benefits:
  - Less material required
  - Less packaging required
  - Reduced weight
  - Less energy required for construction and assembly
  - More luminaires can be shipped per truck to reduce fuel use and emissions
- Luminaire finish is matte white polyester for a high quality, durable finish.
- T-bar grid clips are integral to body.

## Electrical

- Must order compatible Philips Lighting control system.
- LED board is easily accessible from below without tools. Single LED board is replaceable if needed via plug-in connectors to ensure long service life.
- LED driver is accessible from above.
- Five year limited luminaire warranty includes LED boards and driver (emergency driver and batteries have a three year warranty in models so equipped.) Visit [www.philips.com/warranties](http://www.philips.com/warranties) for complete warranty information.
- TM-21 predicted L70 lumen maintenance up to 60,000 hours.
- cETLus listed to UL and CSA standards, suitable for damp locations.

## Enclosure

- Opal diffuser provides soft, comfortable lighting while maintaining high efficiency.
- Diffuser requires no frames or fasteners and can be easily removed from below without tools if needed.

## General Notes

- All options factory installed.
- All accessories are field installed.
- Many luminaire components, such as reflectors, refractors, lenses, sockets, lampholders, and LEDs are made from various types of plastics which can be adversely affected by airborne contaminants. If sulfur based chemicals, petroleum based products, cleaning solutions, or other contaminants are expected in the intended area of use, consult factory for compatibility.

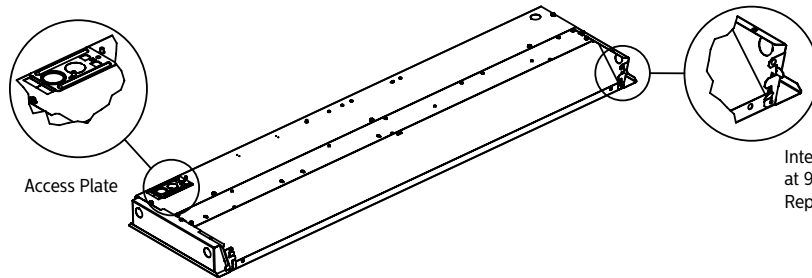
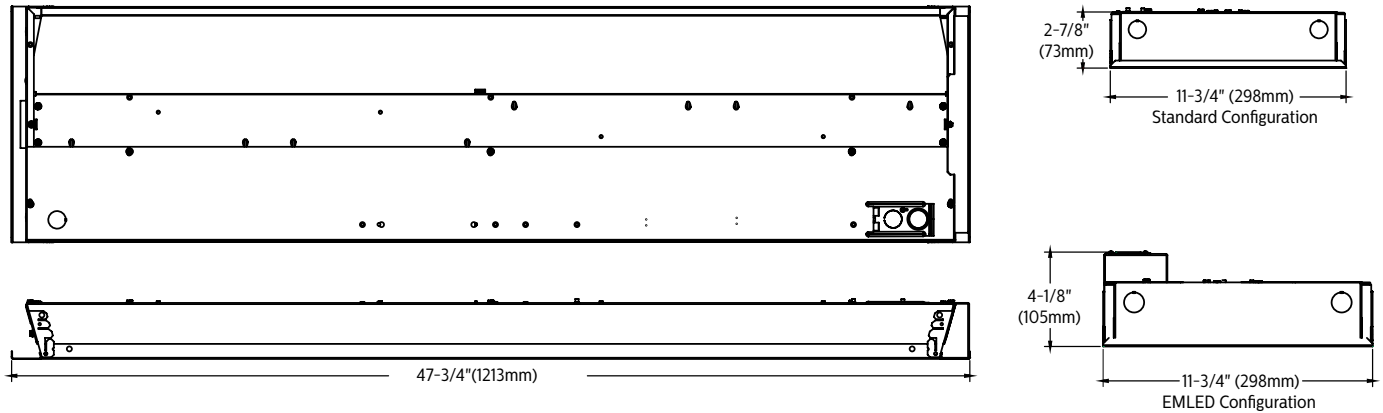
## Controls

- Luminaires are not sold individually and are only compatible with load controllers, sensors, user interfaces and front end software from Philips. Philips controls platform allows for more flexibility with customized lighting scenes and behaviors as well as scalability of the tunable white solution into a more extensive lighting network management system. To learn more about the Philips controls solution please visit our tunable white page or <http://www.lightingproducts.philips.com/our-brands/philips-controls/dynalite.html>

# 1EVG EvoGrid LED recessed 1x4

with tunable white technology, 3700/4500/5000 lumens

## Dimensions



Integral Grid Clips – Bend upper tab outward at 90°. Bend lower tab outward approx. 20°. Repeat for all four corners.

# 1EVG EvoGrid LED recessed 1x4

with tunable white technology, 3700/4500/5000 lumens

## Electrical Specifications

Input Voltage	120V			277V		
Nominal CCT	2700K			2700K		
Nominal Lumens	3700lm	4500lm	5000lm	3700lm	4500lm	5000lm
<b>Commissioned State</b>						
Power (W)	36.5	44.3	50.0	36.3	44.0	49.5
Current (A)	0.31	0.38	0.42	0.16	0.18	0.2
Power Factor	0.98	0.99	0.99	0.85	0.88	0.90
THD (%)	15	14	12	18	17	16
Off State Power (W)	0.6	0.6	0.6	0.9	0.9	0.9
<b>Non-Commissioned State</b>						
Power (W)	67.0	83.0	92.0	66.0	82.0	91.0
Current (A)	0.56	0.70	0.78	0.26	0.32	0.35

## Photometry

1x4 EvoGrid recessed LED with tunable white, 3700 nominal delivered lumens, 2700K CCT

LER – 106

Catalog No.		1EVG37L8TW-4-D-UNV-DTW	
Test No.		36222	
S/MH		1.2	
Lamp Type		LED	
Lumens		3807	
Input Watts		36	
Comparative yearly lighting energy cost per 1000 lumens – <b>\$2.26</b> based on 3000 hrs. and \$.08 pwr KWH.			
The photometric results were obtained in the Philips Day-Brite laboratory which is NVLAP accredited by the National Institute of Standards and Technology.			
Photometric values based on test performed in compliance with LM-79.			

Candlepower			
Angle	End	45	Cross
0	1491	1491	1491
5	1468	1482	1486
15	1394	1410	1416
25	1251	1270	1280
35	1053	1088	1106
45	829	895	926
55	603	689	728
65	397	477	464
75	212	221	176
85	56	14	12

Light Distribution				Average Luminance			
Degrees	Lumens	% Luminaire		Angle	End	45°	Cross
0-30	1122	29.5		45	12226	13192	13651
0-40	1801	47.3		55	10954	12528	13229
0-60	3094	81.3		65	9801	11755	11437
0-90	3807	100.0		75	8528	8919	7098
0-180	3807	100.0		85	6663	1687	1459

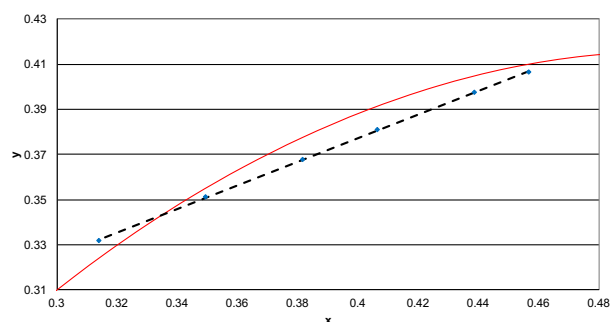
Coefficients of Utilization								
EFFECTIVE FLOOR CAVITY REFLECTANCE 20 PER (pfc=0.20)								
pcc	80			70			50	
pw	70	50	30	70	50	30	50	30
RCR								
0	118	118	118	115	115	115	111	111
1	109	105	101	107	103	98	97	94
2	100	92	84	96	90	83	85	81
3	91	81	72	89	79	71	76	69
4	82	71	63	81	69	61	68	60
5	77	64	55	75	63	55	60	54
6	70	57	48	68	56	48	55	47
7	66	53	44	64	52	44	50	42
8	60	47	40	59	46	39	46	39
9	56	44	35	56	44	35	41	34
10	54	40	33	53	40	33	39	32

# 1EVG EvoGrid LED recessed 1x4

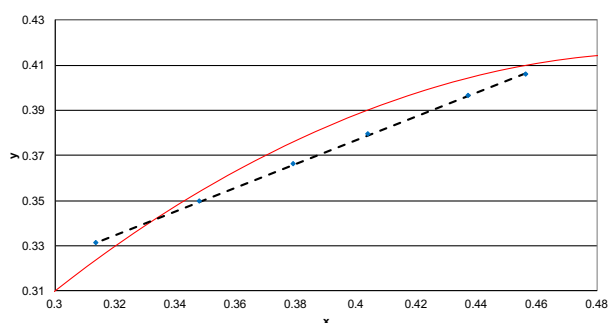
with tunable white technology, 3700/4500/5000 lumens

## Color information

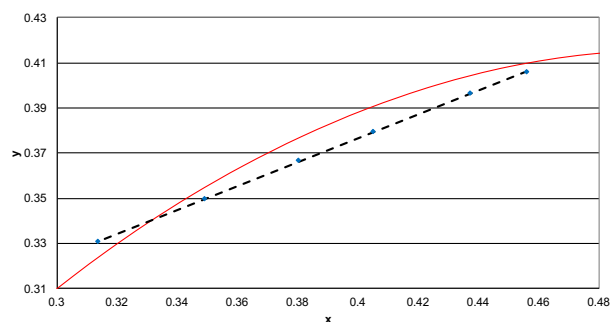
1x4 EvoGrid 3700lm	2700K	3000K	3500K	4000K	5000K	6500K
<b>Flux</b>	3725	3757	3737	3785	3653	3643
<b>Power</b>	36.4	38.1	35.7	34.9	32.9	29.8
<b>Efficacy</b>	102.3	98.7	104.8	108.6	111.0	122.1
<b>CCT</b>	2716	2919	3393	3904	4836	6423
<b>CRI</b>	83	84	86	87	86	82
<b>R9</b>	18	23	31	34	31	11
<b>x</b>	0.4565	0.4385	0.4064	0.3814	0.3494	0.3138
<b>y</b>	0.4065	0.3974	0.3809	0.3679	0.3510	0.3321
<b>Duv</b>	-0.0012	-0.0029	-0.0046	-0.0045	-0.0020	0.0042



1x4 EvoGrid 4500lm	2700K	3000K	3500K	4000K	5000K	6500K
<b>Flux</b>	4460	4549	4600	4708	4607	4632
<b>Power</b>	44.2	45.5	43.1	42.5	40.6	38.3
<b>Efficacy</b>	100.8	99.9	106.7	110.9	113.6	120.9
<b>CCT</b>	2718	2937	3436	3960	4892	6448
<b>CRI</b>	83	84	86	87	86	82
<b>R9</b>	17	23	31	34	30	11
<b>x</b>	0.4562	0.4369	0.4039	0.3790	0.3477	0.3135
<b>y</b>	0.4063	0.3965	0.3794	0.3663	0.3496	0.3312
<b>Duv</b>	-0.0013	-0.0030	-0.0047	-0.0046	-0.0020	0.0039



1x4 EvoGrid 5000lm	2700K	3000K	3500K	4000K	5000K	6500K
<b>Flux</b>	4950	5040	5070	5169	5017	4982
<b>Power</b>	49.7	50.7	47.6	46.5	44.0	41.4
<b>Efficacy</b>	99.7	99.3	106.6	111.1	113.9	120.3
<b>CCT</b>	2719	2933	3417	3929	4853	6454
<b>CRI</b>	83	84	86	87	86	82
<b>R9</b>	17	23	31	34	31	11
<b>x</b>	0.4560	0.4372	0.4049	0.3802	0.3488	0.3134
<b>y</b>	0.4061	0.3966	0.3798	0.3668	0.3500	0.3309
<b>Duv</b>	-0.0013	-0.0030	-0.0048	-0.0047	-0.0023	0.0038



© 2016 Philips Lighting Holding B.V. All rights reserved.  
Philips reserves the right to make changes in specifications and/or to discontinue any product at any time without notice or obligation and will not be liable for any consequences resulting from the use of this publication.  
[philips.com/luminaires](http://philips.com/luminaires)



Philips Lighting North America Corporation  
200 Franklin Square Drive, Somerset, NJ 08873  
Tel. 855-486-2216

Philips Lighting Canada Ltd.  
281 Hillmount Rd, Markham, ON, Canada L6C 2S3  
Tel. 800-668-9008