

PHILIPS Day-Brite CFI

Recessed

SofTrace LED 2x2

with tunable white
technology
3200/4000/4400 lm



Project: _____
Location: _____
Cat.No: _____
Type: _____
Lamps: _____ Qty: _____
Notes: _____

Philips Day-Brite / Philips CFI SofTrace LED recessed architectural provides excellent visual comfort. Its modern architectural styling complements any space. Tunable white light allows color temperature flexibility between 2700K and 6500K CCT.

Ordering guide

Example: 2STG32L8TW-2-D-UNV-DTW

Width	Family	Ceiling Type	Lumen Package ¹	Color Temp.	Length	Center Diffuser	Voltage	Driver	Options
2	ST			8TW —	2 —	—	UNV —	DTW —	
2 2'	ST Softrace	G Grid F Flange Z Z Spline / Modular	32L 3200 nominal delivered lumens 40L 4000 nominal delivered lumens 44L 4400 nominal delivered lumens	8TW 80 CRI, 2700K thru 6500K white light tuning	2 2'	D Diffuse (ribbed) DS Diffuse (smooth) PMW Round perf w/ white overlay	UNV Universal voltage 120-277V	DTW Dual channel tunable white	EMLED Internal emergency, 1100lm nominal, 6500K color circuit only F1/D 3/8" twin flex, 3 wire 18 gauge 6' for dimmable luminaires F2/7W 3/8" single flex, 7 wire 18 gauge 6' for dimmable luminaires GLR Fusing, fast blow

Footnotes:

¹ The lumen values stated above are relevant only to the "D" center diffuser option. For lumen values with the other diffusers, check the photometrics tests online for those specific catalog numbers.

Accessories (order separately)

- FKDP22 Flange conversion kit 2'x2'
- FMA22 2'x2' "F" mounting frame for NEMA "F" mounting



2ST SofTrace recessed LED 2x2

with tunable white technology, 3200/4000/4400 lumens

Application

- Subtle enclosure curves provide architectural styling to complement any space.
- Smooth brightness across the face of the luminaire prevents glare and provides excellent visual comfort.
- Directs a controlled amount of light to higher angles to eliminate "cave effect" without creating glare.
- Outstanding visual comfort, ideal for modern offices, schools and retail environments.
- High CRI source provides excellent color rendering with a CRI of 80.
- Grid, Flange or Z-spline/ Modular models available.

Construction/Finish

- One piece die-formed embossed steel housing provides added rigidity, resists damage during shipment/handling.
- T-bar grid clips are built into luminaire ends for quick and easy installation, no extra parts required.
- End K.O.s for thru wiring or conduit entry in shallow plenums.
- Suitable for end to end mounting.

Electrical

- Must order compatible Philips Lighting control system.
- Driver and LED boards are easily accessible from below. LED boards are individually replaceable, if required, via plug-in connectors.
- Available emergency option requires ballast enclosure on top of luminaire.
- Five year standard luminaire warranty including LED boards and driver. Emergency driver and batteries have a three year warranty in models so equipped.
- High efficiency LEDs have a minimum 60,000 hour rated life (L70).
- cETLus listed to UL standards, suitable for damp locations.

Enclosure

- Choice of three enclosures:
 - Single piece thermo formed acrylic lens with ribbed center diffuser (D)
 - Single piece acrylic lens with smooth center diffuser (DS).
 - Three piece acrylic lens with round perforated steel center diffuser (PMW)

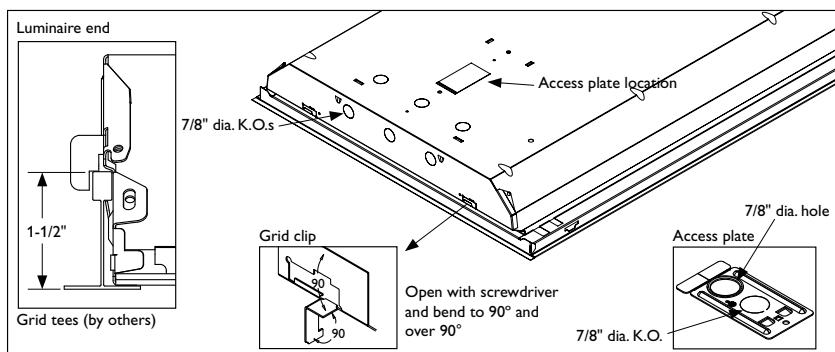
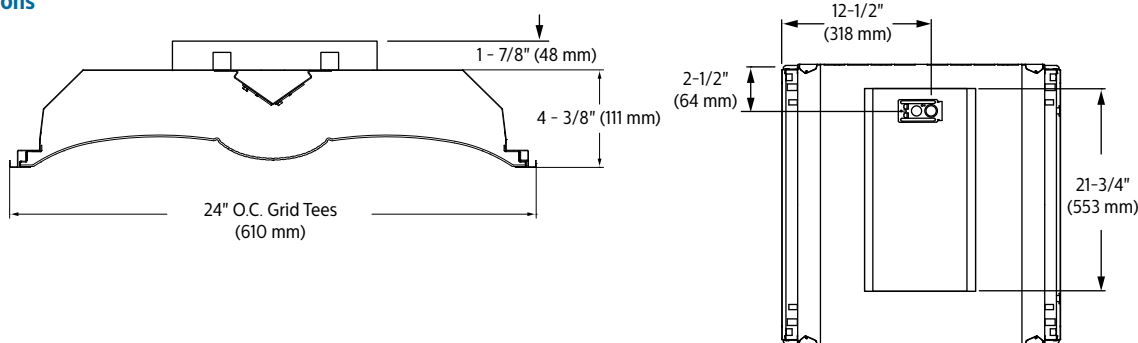
General Notes

- All options factory installed.
- All accessories are field installed.
- Many luminaire components, such as reflectors, refractors, lenses, sockets, lampholders, and LEDs are made from various types of plastics which can be adversely affected by airborne contaminants. If sulfur based chemicals, petroleum based products, cleaning solutions, or other contaminants are expected in the intended area of use, consult factory for compatibility.

Controls

- Luminaires are not sold individually and are only compatible with load controllers, sensors, user interfaces and front end software from Philips. Philips controls platform allows for more flexibility with customized lighting scenes and behaviors as well as scalability of the tunable white solution into a more extensive lighting network management system. To learn more about the Philips controls solution please visit our tunable white page or <http://www.lightingproducts.philips.com/our-brands/philips-controls/dynalite.html>

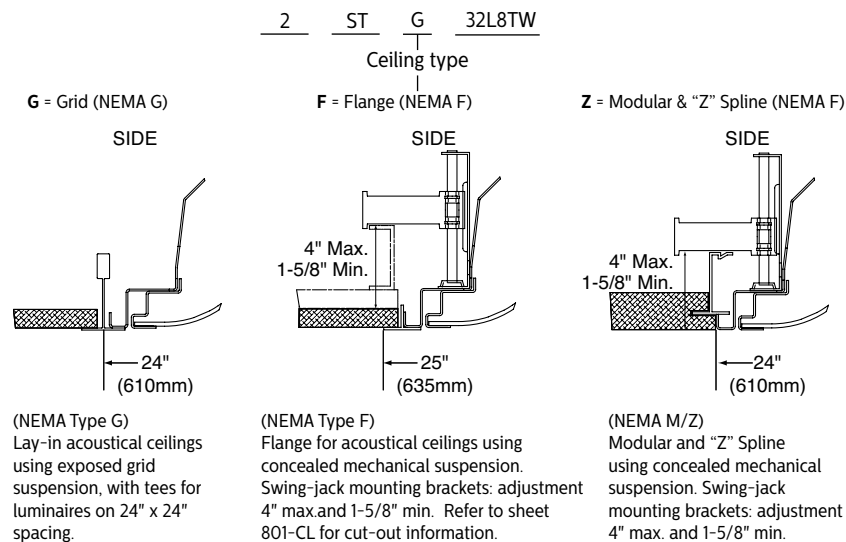
Dimensions



2ST SofTrace recessed LED 2x2

with tunable white technology, 3200/4000/4400 lumens

Ceiling configuration



Electrical Specifications

Input Voltage	120V			277V		
Nominal CCT	2700K			2700K		
Nominal Lumens	3200lm	4000lm	4400lm	3200lm	4000lm	4400lm
Commissioned State						
Power (W)	36.5	44.3	50.0	36.3	44.0	49.5
Current (A)	0.31	0.38	0.42	0.16	0.18	0.2
Power Factor	0.98	0.99	0.99	0.85	0.88	0.90
THD (%)	15	14	12	18	17	16
Off State Power (W)	0.6	0.6	0.6	0.9	0.9	0.9
Non-Commissioned State						
Power (W)	67.0	83.0	92.0	66.0	82.0	91.0
Current (A)	0.56	0.70	0.78	0.26	0.32	0.35

Photometry

2x2 SofTrace LED recessed with tunable white, 3200 nominal delivered lumens, diffuse, 2700K CCT

LER – 93

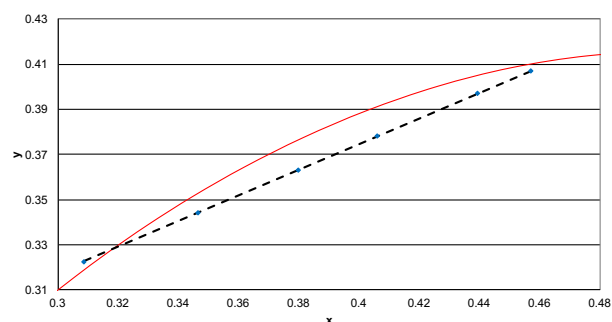
Catalog No.		2STG32L8TW-2-D-UNV-DTW								
Test No.		36153								
S/MH		1.3								
Lamp Type		LED								
Lumens/Lamp		3334								
Input Watts		36								
CCT		2700K								
<p>Comparative yearly lighting energy cost per 1000 lumens – \$2.58 based on 3000 hrs. and \$.08 pwr KWH.</p> <p>The photometric results were obtained in the Philips Day-Brite laboratory which is NVLAP accredited by the National Institute of Standards and Technology.</p> <p>Photometric values based on test performed in compliance with LM-79.</p>		Candlepower								
		Angle	End	45	Cross					
		0	1225	1225	1225					
		5	1213	1221	1227					
		15	1159	1181	1200					
		25	1045	1089	1132					
		35	891	958	1021					
		45	710	788	849					
		55	519	588	638					
		65	333	387	428					
75	164	211	242							
85	38	56	53							
		Light Distribution								
		Degrees	Lumens	% Luminaire	Average Luminance					
		0-30	951	28.5	Angle	End	45°	Cross		
		0-40	1549	46.5	45	3298	3662	3945		
		0-60	2673	80.2	55	2971	3369	3655		
		0-90	3333	100.0	65	2587	3010	3331		
		0-180	3334	100.0	75	2087	2684	3072		
					85	1444	2107	2009		
		Coefficients of Utilization								
		EFFECTIVE FLOOR CAVITY REFLECTANCE 20 PER (pfc=0.20)								
		pcc	80			70			50	
		pw	70	50	30	70	50	30	50	30
		RCR								
		0	118	118	118	115	115	115	111	111
		1	109	104	100	106	102	97	97	94
		2	98	91	83	96	89	82	85	80
		3	91	80	71	88	79	70	76	68
		4	82	70	61	81	69	61	67	59
		5	76	64	55	73	61	54	59	53
		6	70	56	47	68	56	47	55	46
		7	65	52	42	64	51	42	50	41
		8	60	47	39	58	46	39	46	38
		9	56	44	34	56	42	34	41	34
		10	53	40	32	52	40	32	39	32

2ST SofTrace recessed LED 2x2

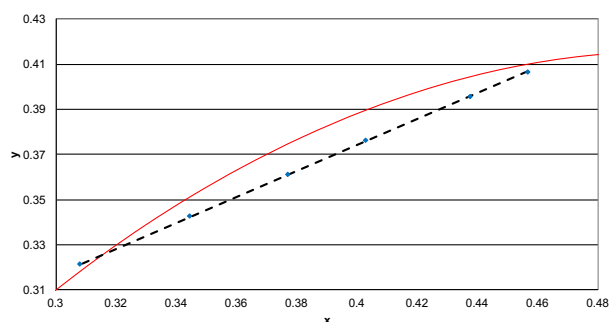
with tunable white technology, 3200/4000/4400 lumens

Color information

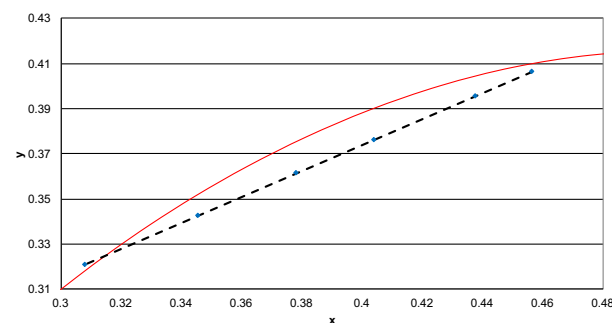
2x2 SofTrace 3200lm	2700K	3000K	3500K	4000K	5000K	6500K
Flux	3354	3360	3321	3352	3225	3168
Power	35.7	37.2	35.0	34.1	32.2	29.2
Efficacy	94.0	90.3	94.8	98.3	100.2	108.5
CCT	2714	2905	3379	3910	4916	6795
CRI	83	84	87	88	88	85
R9	17	23	33	39	40	23
x	0.4568	0.4391	0.4059	0.3799	0.3465	0.3086
y	0.4069	0.3969	0.3781	0.3633	0.3442	0.3225
Duv	-0.0011	-0.0031	-0.0058	-0.0063	-0.0044	0.0020



2x2 SofTrace 4000lm	2700K	3000K	3500K	4000K	5000K	6500K
Flux	4006	4053	4079	4167	4071	4048
Power	43.4	44.7	42.3	41.6	39.8	37.6
Efficacy	92.4	90.7	96.4	100.1	102.2	107.6
CCT	2716	2925	3428	3978	4991	6838
CRI	82	84	87	88	88	85
R9	16	23	33	39	39	24
x	0.4565	0.4373	0.4029	0.3770	0.3445	0.3081
y	0.4067	0.3957	0.3761	0.3612	0.3425	0.3214
Duv	-0.0012	-0.0034	-0.0060	-0.0064	-0.0044	0.0017



2x2 SofTrace 4400lm	2700K	3000K	3500K	4000K	5000K	6500K
Flux	4443	4494	4497	4576	4431	4349
Power	49.1	49.8	46.7	45.7	43.3	40.8
Efficacy	90.6	90.1	96.3	100.1	102.4	106.7
CCT	2718	2922	3412	3950	4957	6858
CRI	82	84	87	88	88	85
R9	16	22	33	39	40	24
x	0.4563	0.4375	0.4038	0.3780	0.3454	0.3078
y	0.4064	0.3957	0.3765	0.3616	0.3427	0.3209
Duv	-0.0012	-0.0034	-0.0061	-0.0066	-0.0047	0.0015



© 2016 Philips Lighting Holding B.V. All rights reserved.
Philips reserves the right to make changes in specifications and/or to discontinue any product at any time without notice or obligation and will not be liable for any consequences resulting from the use of this publication.
philips.com/luminaires



Philips Lighting North America Corporation
200 Franklin Square Drive, Somerset, NJ 08873
Tel. 855-486-2216

Philips Lighting Canada Ltd.
281 Hillmount Rd, Markham, ON, Canada L6C 2S3
Tel. 800-668-9008