

PHILIPS

Petrol station
lighting

TOTAL KERKEIND

**Petrol and
convenience**



Lighting the journey

Your petrol station is an oasis on the road: a welcoming sight for motorists that need fuel, a refreshment stop for weary travelers, and a safe place to pull up and park. The right lighting can encourage them to visit you. And it also has the power to make your brand stand out, while also displaying your commitment to energy efficiency.

Content

| | |
|-----------------------------|-----------|
| Introduction | 4 |
| The changing face of petrol | 4 |
| Innovation pillars | 4 |
| Case studies | 6 |
| Application areas | 12 |
| Intelligent canopy lighting | 12 |
| Convenience store lighting | 18 |
| Outdoor lighting | 36 |
| Car wash lighting | 40 |
| Philips Service tag | 44 |
| Why choose Philips? | 46 |

Introduction

The changing face of petrol



Millennials on the road

Because the internet, social media and mobile phones have always been a part of their lives, the millennials – today's young adults in their 20s and 30s – are the first truly digital generation.

Their desire for personalized experiences is shaping a new reality for the owners and operators of petrol stations and convenience stores. Research shows that today's generation is shopping more frequently and in smaller quantities.

This, along with long commute times on the road, leads people to stop at convenience stores to satisfy their needs.

From grab-and-go to fresh food choices

Because of an increased awareness of healthy and high-quality food, customers now more carefully select where they buy. This trend has prompted the industry to test new formats, revamp the ones they now use, and shift towards strategies designed to differentiate themselves from the competition. Customers shop little and often and it's no longer "we have to stop here" but rather "let's stop here." The shift to selling more fresh food and gourmet coffee has significant implications for operations. Employees need specialized training in barista skills and food preparation.

Some retailers solve this by entering partnerships with food retailers. Another option is to train employees, or utilize digital systems that support these operations.

- Healthiness is an important factor in choosing a snack for **50% of adults**. (Technomic 2014)
- **87% of adults believe fresh foods are healthier, 80% believe they are tastier, and 78% of people make a conscious effort** to eat more fresh than processed foods.
- The consumption of fresh foods **grew by 20% to more than 100 billion meals per year** and this is expected to be 120 billion meals by 2018. (NPD Group 2014)
- Millennials and generation Z are expected to increase the amount of fresh meals they eat by **11.1% and 7.5% respectively**. (NPD Group 2014)
- Consumers increasingly link fresh foods to specific nutritional attributes. **Fresh breakfast foods are forecasted to increase 9%, fresh lunches 7% and fresh dinners 5%**. (NPD Group 2014)

Innovation pillars

Our Philips Lighting strategy for retail



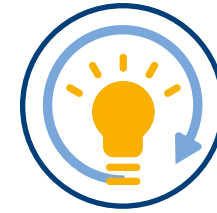
Optimizing energy efficiency



Store enhancement

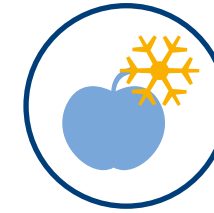


Connected lighting



Reduce energy use

With low-energy LED lighting, your energy bill can be reduced by up to 90%. Combined with lighting controls, you could save an additional 35%.



Extend the shelf life of your produce

The right light recipe can make fresh food look its best and extend its shelf life.



Reduce maintenance cost

Get feedback and status reports from your luminaires and become proactive with maintenance.

Lighting can help you create the petrol station you want

Case studies

Safe canopy lighting for petrol stations

Total Petrol stations, Benelux

Thanks to the integrated presence and twilight sensors, our lighting saves extra energy because light levels drop to 70% when there are no motorists near the pumps. And these savings come while improving the visibility for employees and customers. Presence and twilight sensors only have to be set once via the mobile app and then the manager can leave the system to do its job.



“The forecourt, where people refuel their vehicles, is now a lot brighter, **making it easier to see what’s going on.**”

Marleen Baudoin
Petrol station manager TOTAL Kerkeind

“ Low energy consumption is important, and so is a sense of security. But the most important factor is the customer experience. Customers should experience the shop as a pleasant environment to stay in. This has been made possible thanks to Philips.”

Joost van Aardenne
Asset Manager BP Europe SE - BP Nederland



Giving the petrol station a lighting makeover

BP, Tilburg

Electricity costs BP as much as €28,000 per year per individual station. With energy-efficient fixtures, Philips was able to reduce the amount BP spends on powering lights by 40%.

Lighting changed customer behavior

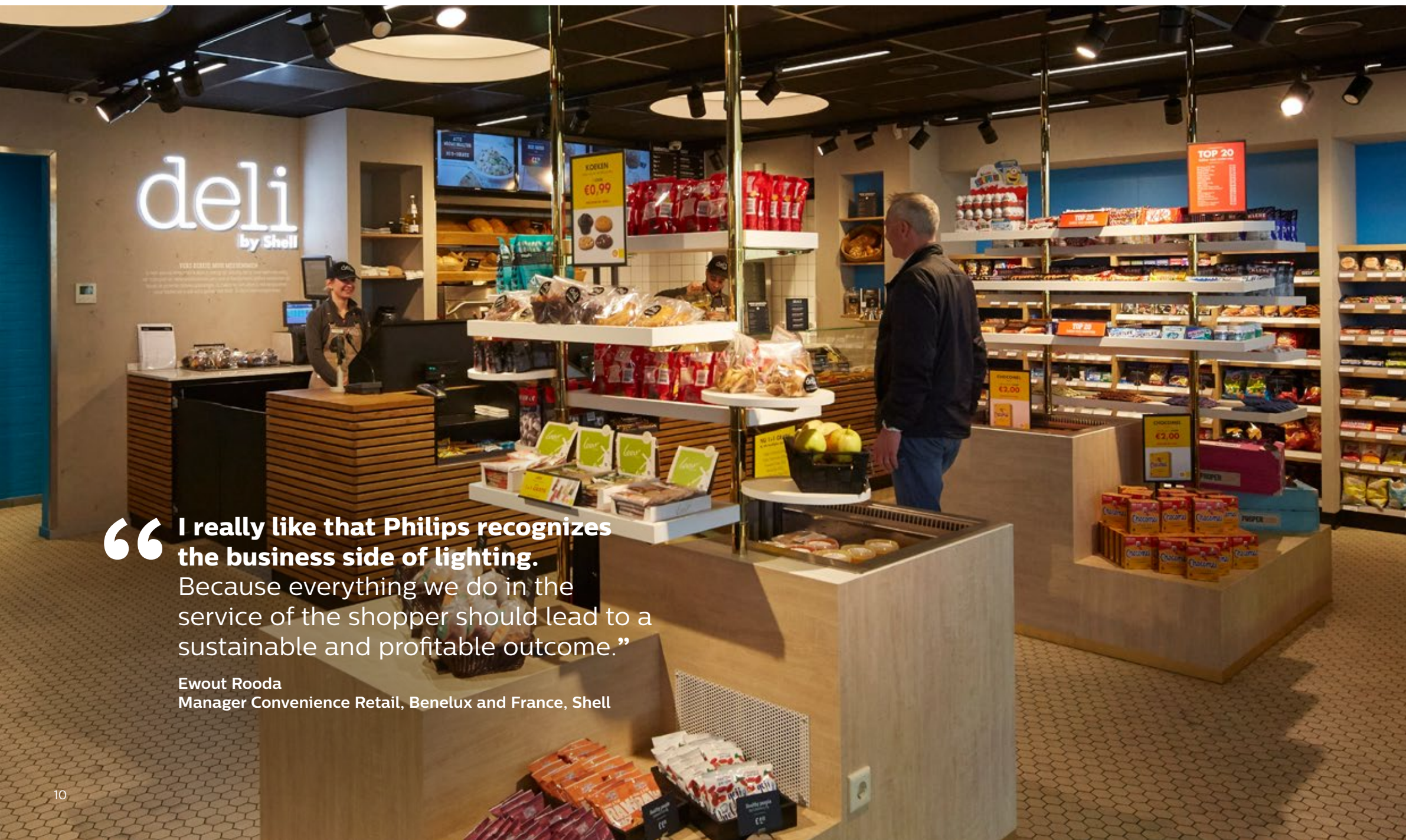
Shell, Rijswijk

Like all retailers, Shell is keen to meet the needs and expectations of a new generation of shoppers.

They wanted to explore the possibilities of light, how it affects shopper behavior and how it can be used to improve the in-store experience, so we helped pioneer a new lighting approach in one of their convenience stores.

In 'hero areas' of the pilot store, different light intensities were tested to attract more shoppers at specific times of the day.

The results were impressive. Independent analysis including camera footage and customer interviews showed that we could significantly increase flow to impulse goods.



“I really like that Philips recognizes the business side of lighting. Because everything we do in the service of the shopper should lead to a sustainable and profitable outcome.”

Ewout Rooda
Manager Convenience Retail, Benelux and France, Shell

Benefits for both store and customers



Insight into buying preferences at specific times of the day



Increased traffic to highlighted product categories during the day



Enhanced look and feel of products displayed



Customers feel safer

For more information on this case study or to read about other projects, please visit:
www.philips.com/petrolstationlighting

Application areas

Intelligent canopy lighting

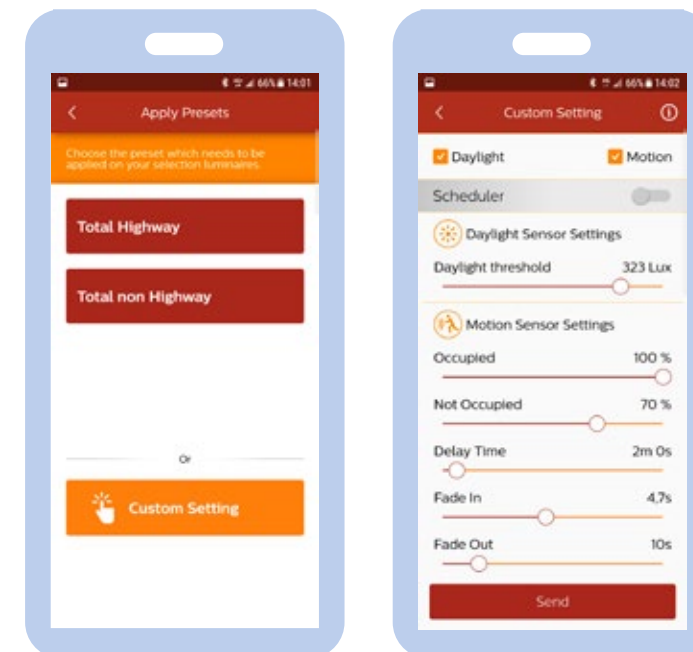
Bright and clear canopy lighting increases a sense of safety and comfort that can make the difference between “let’s drive on to the next one” to “let’s stop here”.



Our canopy lighting solutions deliver high vertical lighting levels, increasing customers’ sense of safety and comfort which, in turn, drives brand loyalty, without compromising on energy efficiency. A switch to LED canopy lighting can save up to 90% energy compared to conventional solutions. Enhance savings even further by adding smart energy management systems that allow light level optimization and maintenance planning.

Mini300 gen 3

With operating margins under pressure, companies are looking for ways to save energy. LED products like our Mini300 luminaires are a perfect solution. Designed for petrol-station canopies and low-bay applications, these ultra-efficient retrofit fixtures offer outstanding light quality, effective thermal management, and a very long lifespan. Reduced maintenance, replacement and energy cost means a short payback period, making Mini300 a shining example of how businesses can save money by opting for green products. A movement detector combined with a daylight sensor enables further energy savings. Our Mini300 app gives users control in ways that are simply not possible with other luminaires – for instance, reading status and managing lighting from the floor by laptop or Smartphone via Bluetooth.



The benefits



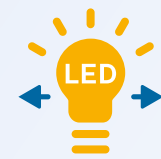
Light solution that can be installed by one person



Better preventive maintenance because you can check the luminaire’s status with app



Programming can be done by smartphone or PC app



1:1 retrofit with existing installations



Use Bluetooth to configure luminaires, dimming levels, schedulers, etc.



Long lifetime 100,000 hours

Different sensor modes



Day light sensor

- on/off light threshold
- savings thanks to natural light – sunrise and sunset.



Scheduler mode

- Different day, different time, different mode
- all days (Mon – Sun)
 - seven time ranges per day.



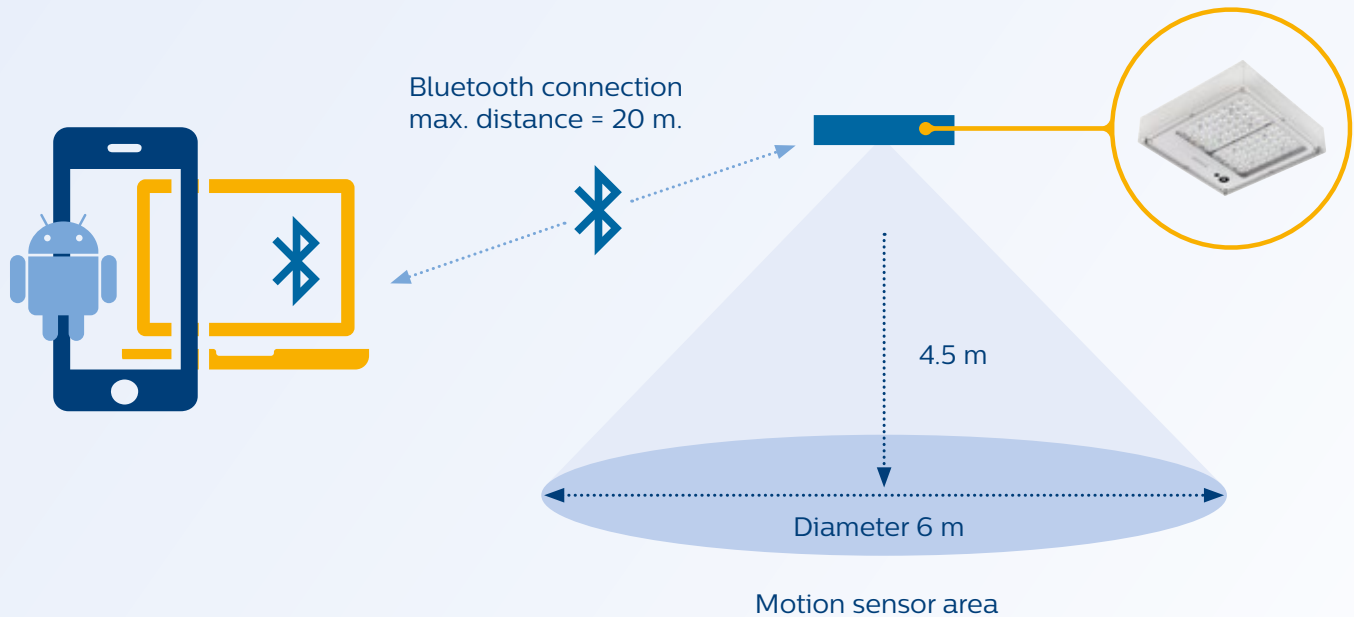
Movement detector unit

- Based on the latest in PIR technology
- min and max light level (10 – 100%)
 - fade in/out (0 – 15 sec)
 - delay time (0.5 – 30 min).



Fix mode

- Same level of light output (10 – 100%)



Range overview Mini300



| | Mini300 Basic | Mini300 Basic+ | Mini300 Smart |
|---|------------------------------------|------------------------------------|-----------------------------|
| Stand-alone (On/Off) luminaire | ✓ | ✓ | ✓ |
| Light distributions: asymmetric, symmetric medium beam, symmetric wide beam | ✓ | ✓ | ✓ |
| Color temperatures 4000K, 5700K | ✓ | ✓ | ✓ |
| CRI: 70, 80 | ✓ | ✓ | ✓ |
| Mounting: recessed, surface mounted or floodlight | ✓ | ✓ | ✓ |
| Lifetime L80B10: 100,000 h at 25°C | ✓ | ✓ | ✓ |
| Up to 147 lm/W (system efficacy) | ✓ | ✓ | ✓ |
| Service tag* | ✓ | ✓ | ✓ |
| Motion sensor | | ✓ | ✓ |
| Scheduler mode | | | ✓ |
| Fix mode | ✓ | | ✓ |
| Bluetooth-wireless control | | | ✓ |
| Daylight sensor | | | (optional) |
| Master - Slave | | | (optional) |
| DALI v2.0 protocol | (optional) | | |
| Energy savings | up to 80% compared to conventional | up to 80% compared to conventional | up to 50% compared to Basic |

* See page 44 for more information

Mini300 gen 3

Benefits

- Good quality of light to attract customers and make them feel safe at night.
- Payback from energy saving including dimming and controls (best TCO).
- Enhances sustainable image of company.
- Bluetooth communication in the luminaires enable integration with any (remote) monitoring and control software, even for installed base.

Product specifications

| | | | | |
|--------------------------------------|--|-----|-----------|--------------------|
| Type | Recessed mounted (BBP333): requires ceiling mounting frame accessory, to be ordered separately Surface mounted (BCP333) Floodlight (BBP333 + ZBP333 MB WH SET): requires recessed mounted luminaire and accessory kit, to be ordered separately | | | |
| Light source | Integral LED-module | | | |
| Luminous flux | 8100 lm (LED81) 12800 lm (LED128) 15900 lm (LED159) | | | |
| Power (+/-10%) | 50 to 97 W depending on LED configuration | | | |
| Luminaire efficacy | Up to 176 lm/W source efficacy and upto 147 lm/W luminaire efficacy depending on LED and optic configuration | | | |
| CCT | 4000 K (neutral white) or 5700 K (cool white) | | | |
| CRI | CCT | CRI | lm/W | Lumens |
| | 4000 | 70 | up to 147 | 8000, 13000, 16000 |
| | 5700 | 70 | up to 147 | 8000, 13000, 16000 |
| | 4000 | 80 | up to 122 | 8200, 13000 |
| Useful life - L80B10 | 100,000 hours | | | |
| Operating temperature range | -30 to +45 °C (outdoor), except recessed mounted LED159 version limited to +40 °C | | | |
| Driver | Integral | | | |
| Mains voltage | 220-240 V / 50-60 Hz | | | |
| Driver failure rate at 5000 h | 0.2% per 5000 hours | | | |
| Inrush current | 53A/300µs (12800, 15900 lm versions) 46A/250µs (8100 lm version) | | | |
| Power factor | > 0.95 at full power | | | |
| Dimming | Integrated motion / daylight sensor on Basic+ and Smart versions | | | |
| Lighting control versions (optional) | Smart (Bluetooth-wireless programmable motion sensor) Basic+ (non-programmable motion sensor) Basic (stand-alone without control, on/off) Photocell (integral daylight sensor) Master-Smart/Slave-DALI (up to 6) control | | | |
| Options | Basic, Basic+ and Smart, see page 15 Class I or II | | | |
| Optic | Distribution symmetrical medium beam (PRM) Distribution symmetrical wide beam (PRW) Distribution asymmetrical medium beam (PAM) | | | |
| Material | Housing: high pressure die-cast aluminum Optical cover: clear polycarbonate with white edges, flat Optical lenses: clear acrylic Mounting accessories: painted metal | | | |

Features

- Up to 176 lm/W source efficacy and up to 147 lm/W luminaire efficacy depending on LED and optic configuration.
- Perfect proven quality of light.
- Integrated lighting controls, including motion and daylight sensors.
- Maximum energy savings with customizable control possibilities.
- Extremely simple and light weight for easy and fast mounting.
- Best commissioning and wireless control possibilities with app.

| | |
|---|--|
| Color | White RAL 9003 Recessed mounted luminaire, not painted (raw aluminum) |
| Connection | Watertight clamps connection device |
| Coating | Standard (500 h salt spray test) |
| Degree of Ingress Protection | IP66 |
| Mechanical impact protection code | IK08 |
| Surge Protection (differential/common) | 6/8 KV |
| Installation | Recommended mounting height: 4.5 m (max. 5 m) Floodlight version could be mounted higher, but without motion sensor, which does not function above 5 m Recessed mounted version for double skin canopies requires ceiling mounting frame accessory available in different sizes Recessed mounted version retrofit to old Mini300 Cube (DBP300) and Mini 300 LED (BBP 300) without need of ceiling frame Surface mounted version for single skin and double skin canopies Floodlight version suitable for under-canopy down lighting or on the wall Floodlight suitable for up lighting with no sensor unit |
| Electrical connections | Recessed mounted version as pre-wired with cable of 1.5 m (no connector) for mains and optional DALI (master/slave) and optional for thru-wiring Surface mounted luminaire: Electrical connection with screw connectors inside connection box mounted onto luminaire. Floodlight luminaire: Same as recessed mounted luminaire |
| Maintenance | Sensor can be replaced, but together with front cover |
| Mounting accessories of BBP333 luminaire (to be ordered separately) | Ceiling frame for hole 360 x 360 mm (ZBP333 CFRM L360 W360 WH) Ceiling frame for hole 470 x 470 mm (ZBP333 CFRM L470 W470 WH) Ceiling frame for hole 560 x 410 mm (ZBP333 CFRM L560 W410 WH) Floodlight mounting kit (ZBP333 MB WH SET) |
| Certification / Approbation | CE, ENEC, RoHS-Recyclability, LM80 |
| Application areas | Petrol stations under canopy lighting and car wash area |
| Remarks | Philips Mini 300 LED app can be downloaded from Google Play for Bluetooth wireless communication enabling luminaire setting, commissioning, information feedback from luminaire (Smart control version only) |

Specifications are subject to change.
Latest specifications are available on our [online catalogue](#).



Application areas

Key benefits

Easy installation and flexibility – always being able to re-use inventory

The luminaires and accessory kits can be exchanged. For example: the frame of the surface mounted luminaire can be replaced by a recessed accessory to obtain a recessed luminaire and vice versa.

**Recessed:
BBP 333 + ZPP333 accessory**

1:1 Retrofit with Mini300 HID conventional installations. For existing installations no frame needed (re-use of existing frame). For new installations: Mounting frame ZBP333 accessory to be ordered separately.

**Surface mounted:
BCP 333**

BCP 333 is delivered with pre-mounted surface mounted frame.

Floodlight: BBP 333 + ZBP333 MB WH SET

Specific accessory kit **BBP333 MB WH SET** to be ordered separately for floodlight mounting.

Convenience store lighting

Today, customers expect more from their shopping experience and our technology can help you deliver it.

You can do more than save energy. An attractive, inviting, LED-lit indoor environment will attract customers and improve their experience, enhance sales, and reinforce your brand image – all while saving you energy.

Our energy-saving LED lighting options create the right ambience so your customers will enjoy their in-store experience, stay longer, explore more, buy more and come back. And by highlighting different

product categories at different times of day, you can even guide your customers and influence their shopping journey.

In addition, we offer LED recipes that optimize the presentation and preservation of fresh food, to show fresh produce in its best light, bringing out bright colors and textures you can almost taste. They can even help you reduce food waste by increasing the shelf life of fresh produce.

StoreWise

A flexible solution with beautiful results

Our StoreWise systems offers store-based lighting controls for dimming, highlighting, zoning or using color points in different areas during different times of the day. And it's a platform for additional features and functionalities in future that will help keep your store current.

With StoreWise we;

- create memorable shopper experiences
- maximize energy saving
- provide full flexibility
- remotely control lighting via app
- offer ease of installation and ease of maintenance
- give you a future-ready platform designed to be easily scaled-up to a multi-site system with added features and functionality, such as energy and maintenance dashboards, status information and reporting, and remote support.

Shine a light

StoreWise lighting system provides both functional and experiential lighting, using a single control system, so that your retail location shines in the best light possible.

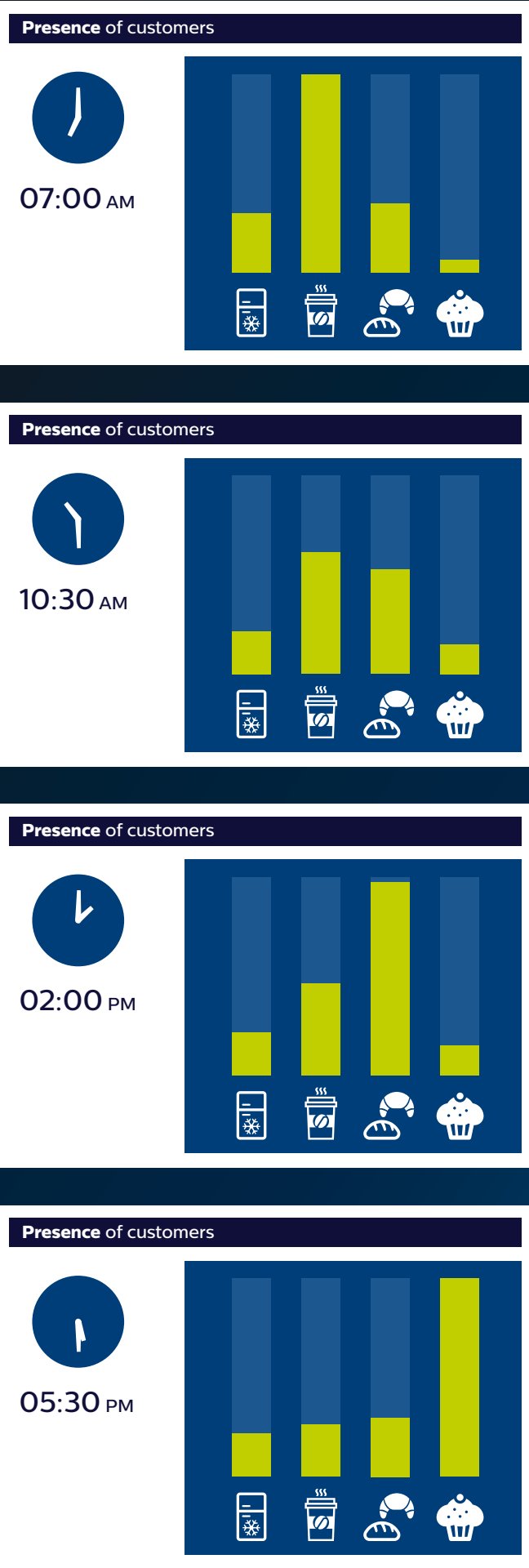
You can create a memorable customer experience that encourages spending, loyalty and repeat visits.

- set a brand-specific tone and create a welcoming ambience
- optimize the appearance of products and create atmospheres that match with the products, e.g. warm lighting for breads, coffee
- highlight promotional items or areas of interest
- guide the customer's eye as they journey through the space
- create lighting schemes and dimming schedules for time of day, special events or occasions, or seasonality
- boost employee comfort while they perform tasks.

Stay flexible

LED luminaires are dimmable, so combining them with controls offers you infinite flexibility. We've proven the positive effects of dynamic lighting settings on customers' routing and purchase behavior in supermarkets and petrol stations.

You can, for example, highlight the most relevant product categories at different times of the day. This can be used to increase shopper attention for breakfast and lunch items, or for snacks to satisfy a pre-dinner craving.



Enhance fresh food and impulse goods

Despite the dramatic growth of e-commerce, most retail sales still happen in stores. With this in mind, we developed LED flavors and Fresh food recipes that enhance the look of your products while also helping to preserve freshness.

Fresh food champagne

- proven to illuminate cheese beautifully while also preserving its quality by slowing down the process of lipid oxidation
- enhances the warm, crispy and fresh look of bread and pastries
- strengthens typical gold, brown and wood colors for coffee areas.

Use it in sandwich counters and coffee areas to make products look their best and create warm and homey atmosphere piece.



Premium white

- shows pure realistic colors and whites for natural settings
- excellent for highlighting gifts and flowers.



Crisp white

- clean, crisp white light brings whites alive
- emphasizes deep, rich colors and textures
- excellent for highlighting promotions, because it enhances the saturated colors and whites on packaging materials
- ideal for lighting gondola ends, promotional areas, and impulse-buy convenience goods.

Customization capabilities

Unleash your inner creator

Philips Lighting has created industry-leading customization capabilities for creative designs to meet a variety of project-based special requests. The magic of customization opens new opportunities for creative designs.



Tailored designed, re-usable decorative luminaires

Total was looking for a modern look in their coffee areas. Surprising customers with a bespoke design element. The logo is literally imprinted in the luminaire. Also here, the shades can be replaced fast and easily. It's functional, decorative, surprising and sustainable.



Range overview shop lighting



Accent lighting *

- StyllID
- LuxSpace Accent
- GreenSpace Accent Elbow



Downlights

- GreenSpace



Pendants

- GreenSpace Accent Pendant



Wall wash lighting

- eW Cove
- InteGrade



General lighting

- PowerBalance KC

* all available with FreshFood recipe and LED flavors

Track spots: StylID

Benefits

- attract shoppers with high-quality light
- luminaire design blends discreetly into the store
- good energy performance, matching CDM Elite while offering much longer lifetime and payback of the Total Cost of Ownership within three years.



Features

- efficacy of up to 110 lm/W, thanks to very Hi-LOR reflectors (90%) and passive cooling
- lumen packages from 1200 to 4900 lm to match equivalent CDM 20/35/50/70 W MASTERColour Elite
- choice of color temperatures: 2700, 3000 and 4000 K
- color rendering index 80 and 90
- narrow, medium, wide, very wide and oval beams available
- passive cooling for all range
- dimmable versions
- range of accessories (honeycomb, snoot).

Product specifications

| | |
|--|--|
| Type | ST740T (compact, 3C-track version) |
| Light source | Non-replaceable LED module |
| Power | Mini versions NB (LED11S): 15 to 18 W (depending on light color) MB, WB (LED12S): 12 to 16 W (depending on light color) Compact versions NB (LED20S): 27 W MB, WB (LED17S): 16 to 20 W (depending on light color) MB, WB (LED27S): 25 to 32 W (depending on light color) MB, WB (LED39S): 39 W Performance versions NB (LED40S): 55W MB, WB, LIN (LED27S): 24 to 31 W MB, WB, VWB, LIN (LED39S): 35 to 46 W (depending on light color) MB, WB, VWB, LIN (LED49S): 47 to 56 W (depending on light color) |
| Beam angle | Mini and compact versions NB (10°) MB (28–24–30°) WB (36–34–37°) LIN (oval lense) Performance versions NB (15°) MB (21°, +/- 2 degrees depending on lumen package) WB (30°, +/- 2 degrees depending on lumen package) VWB (53°, +/- 2 degrees depending on lumen package) WB LIN (WB + oval lense) : 29 x 51° VWB LIN (VWB + oval lense) : 46 x 60° |
| Luminous flux | Mini versions NB (LED11S): 1000 lm MB, WB (LED12S): 1200 lm Compact versions NB (LED20S): 1600 to 2100 lm (depending on light color) MB, WB (LED17S): 1600 to 1800 lm (depending on light color) MB, WB (LED27S): 2500 to 2900 lm (depending on light color) MB, WB (LED39S): 3200 to 4200 lm |
| Light source color | 827, 830, 840, 930 |
| Correlated Color Temperature | 2700, 3000 or 4000 K |
| Color Rendering Index | 80, 90, >95 |
| Standard deviation color matching (SDCM) | 3 (with a tolerance of +/- 0,005 on color point measurement) |
| Median useful life L70B50 | 70,000 hours |

Specifications are subject to change.
Latest specifications are available
on our **online catalogue**.

LuxSpace Accent



Benefits

- attract shoppers with high-quality light
- luminaire design blends discreetly into the store
- good energy performance, matching CDM Elite while offering much longer lifetime and payback of the Total Cost of Ownership within three years.

Product specifications

| | |
|--------------------|---|
| Type | RS730B (mini, fixed version) RS731B (mini, adjustable version) RS740B (compact, fixed version) RS741B (compact, adjustable version) RS750B (performance, fixed version) RS751B (performance, adjustable version) RS752B (performance, elbow version) |
| Light source | Non-replaceable LED module |
| Power | Mini versions NB (LED11S): 15 to 18 W (depending on light color) MB, WB (LED12S): 12 to 16 W (depending on light color) Compact versions NB (LED20S): 27 W MB, WB (LED17S): 16 to 20 W (depending on light color) MB, WB (LED27S): 25 to 32 W (depending on light color) MB, WB (LED39S): 39 W Performance versions NB (LED40S): 55 W MB, WB, LIN (LED27S) (only in RS752B - elbow archetype): 24 to 31 W MB, WB, VWB, LIN (LED39S): 35 to 46 W (depending on light color) MB, WB, VWB, LIN (LED49S): 47 to 56 W (depending on light color) |
| Beam angle | Mini and compact versions NB (10°) MB (28°, +/- 2 degrees depending on lumen package) WB (36°, +/- 2 degrees depending on lumen package) LIN (oval lense) Performance versions NB (15°) MB (21°, +/- 2 degrees depending on lumen package) WB (30°, +/- 2 degrees depending on lumen package) VWB (53°, +/- 2 degrees depending on lumen package) WB LIN (WB + oval lense) : 29 x 51° VWB LIN (VWB + oval lense) : 46 x 60° |
| Luminous flux | Mini versions NB (LED11S): 1000 lm MB, WB (LED12S): 1200 lm Compact versions NB (LED20S): 1600 to 2100 lm (depending on light color) MB, WB (LED17S): 1600 to 1800 lm (depending on light color) MB, WB (LED27S): 2500 to 2900 lm (depending on light color) MB, WB (LED39S): 3200 to 4200 lm Performance versions NB (LED40S), 20,000 to 30,000 cd in the axis (depending on light color); 3000 to 3900 lm (depending on light color) MB, WB, LIN (LED27S) (only in RS752B - elbow archetype): 2500 to 2900 lm (depending on light color) MB, WB, VWB, LIN (LED39S): 3500 to 4000 lm (depending on light color) MB, WB, VWB, LIN (LED49S): 4300 to 4900 lm (depending on light color) |
| Light source color | 827, 830, 840, 930 |

Features

- efficacy of up to 110 lm/W, thanks to very Hi-LOR reflectors (90%)
- lumen packages from 1200 to 4900 lm to match equivalent CDM 20/35/50/70 W MASTERColour Elite
- choice of color temperatures: 2700, 3000 and 4000 K
- color rendering index 80, 90 and 95
- narrow, medium, wide, very wide and oval beams available
- passive cooling in all versions of the range
- dimmable versions
- through-wiring options.

| | |
|--|--|
| Correlated Color Temperature | 2700, 3000 or 4000 K |
| Color Rendering Index | 80 90 |
| Standard deviation color matching | 3 (with a tolerance of +/- 0,005 on color point measurement) |
| Median useful life L70B50 | 70,000 hours |
| Median useful life L80B50 | 50,000 hours |
| Median useful life L90B50 | 25,000 hours |
| Average ambient temperature | +25 °C |
| Operating temperature range | +10 to +40 °C |
| Driver failure rate | 1% for 5000 hours |
| Driver | Built-in External |
| Mains voltage | 230 or 240 V / 50-60 Hz |
| Dimming | Fix (PSE-E when DC compatible, PSU when NOT DC compatible) DALI (PSED-E when DC compatible, PSU when NOT DC compatible) |
| Material | Rings: metal Heatsink: die-cast aluminum Front cover: acrylic or glass Optic: plastic |
| Color | Black (BK, RAL9004) White (WH, RAL9003) Silver (SI, RAL 9006 metalized grey) Mini and Compact fixed versions only: aluminum brushed (ALU) Compact adjustable versions only: aluminum brushed - black or aluminum brushed - white (ALU-BK or ALU-WH, outer rim: brushed aluminum; inner front housing: black or white) Other RAL colors available on request |
| Optical cover | Mini and compact versions Curved glass (for narrow beam) PMMA (for other beams) Performance versions Clear with jaws (medium beam) Clear with diffuser foil (for other beams) |
| Connection | Push-in connector or with pull relief (PI) Wieland/Adels compatible connector with cable length 0.5m (CW) |
| Installation | Fixation by means of spring fasteners |

Specifications are subject to change.
Latest specifications are available
on our **online catalogue**.

GreenSpace Accent Elbow



Benefits

- hassle-free replacement of CDM recessed luminaires
- short payback compared with CDM luminaires due to high system efficacy
- high-quality accent lighting thanks to PerfectAccent reflector’s light signature.

Features

- high efficacy
- philips PerfectAccent quality of light
- CDM retrofit recessed luminaire; easy to install
- clean, robust design.

Product specifications

| | |
|--|--|
| Type | RS342B |
| Ceiling type | Plaster (board) ceiling |
| Light source | Non-replaceable LED module |
| Power | <ul style="list-style-type: none">• 18, 29 and 38.5 W (for light color 830, LED17S, LED27S, LED39S)• 30 and 46.5 W (for light color Fresh Food Meat, LED19S and LED26S)• 44 W (for light color Fresh Food Champagne, LED27S)• 21, 33 and 50 W (for CrispWhite LED17S, LED27S, LED39S)• 19.4, 28.5 and 48.5 W (for PremiumWhite LED17S, LED27S, LED39S) |
| Beam angle | 12° (NB), 25° (MB), 37° (WB) |
| Luminous flux | <ul style="list-style-type: none">• 1700, 2700, 3900 lm (for light color 830)• 1900 or 2600 lm (for light color Fresh Food Meat, LED19S or LED26S)• 2600 lm (for light color Fresh Food Champagne, LED27S)• 1700, 2700, 3600 lm (for light color CrispWhite) |
| Correlated Color Temperature | <ul style="list-style-type: none">• 2700, 3000 and 4000 K (827, 830, 840)• Fresh Food Meat (FMT)• Fresh Food Champagne (CH)• CrispWhite (CRW)• PremiumWhite (PW9) |
| Color Rendering Index | <ul style="list-style-type: none">• >80 (for 2700, 3000 and 4000 K)• >90 (for Fresh Food Champagne, Fresh Food Meat and PremiumWhite)• >92 (for CrispWhite) |
| Standard deviation color matching (SDCM) | 3 (with a tolerance of +/- 0,005 on color point measurement) |
| Median useful life L80B50 | 70,000 hours |
| Median useful life L70B50 | 50,000 hours |

| | |
|-----------------------------|--|
| Median useful life L90B50 | 25,000 hours |
| Average ambient temperature | +25 °C |
| Operating temperature range | 0 to +35 °C |
| Driver | Separate |
| Mains voltage | 220–240 V / 50–60 Hz |
| Dimming | DALI dimming and Constant Light Output |
| Material | Housing and rim: die-cast aluminum Cover: acrylic |
| Color | White (RAL9003), silver (RAL9006) and black (RAL9004) |
| Connection | <ul style="list-style-type: none">• Push-in connector or with pull relief• Wieland/Adels compatible connector with cable length 0.5 m (CW)• Push-in connector with loop through wiring enabled for non DALI versions (CU3)• Push-in connector with loop through wiring enabled for DALI versions (CU5) |
| Installation | Fixation by means of spring fasteners |
| Remarks | <ul style="list-style-type: none">• Fresh Food Champagne (CH) is the dedicated light recipe for bread and pastries, fruits and vegetables area. It brings a warm traditional ambiance.• Fresh Food Meat (FMT) is a dedicated light recipe for meat counters. It brings a natural cool light setting.• CrispWhite (CRW) is the dedicated light recipe for fashion retailers which makes whites appear pure and bright while at the same time making other colours appear warm, saturated and intense• PremiumWhite is the best CDM Elite alternative for high color rendering with a warm color of light for fashion and food retailers. |

Specifications are subject to change.
Latest specifications are available
on our [online catalogue](#).

GreenSpace downlight



Benefits

- good value for money LED Downlight resulting in low return of investment years due to high energy saving and long lifetime
- wide portfolio to cover many customer needs and multiple applications
- office lighting norm-compliant, with stable color performance and high color rendering.

Features

- energy-efficient, durable LED technology
- high system efficacy:typically 111 lm/W (mini, DN460B/DN461B)</p> typically 111 lm/W (compact, DN470B LED30S)</p> typically 114 lm/W (compact, DN470B/DN471B LED20S)
- stable color performance maxium SDCM 5 and high color rendering CRI80+
- available with protective glass cover making it IP44 and emergency lighting
- available in UGR22 and UGR19 versions
- available in 3000 lumen to cover application with extra height ceilings
- compatible with light control system via 1-10 V driver
- fast installation due to variety of connections and cables.

Product specifications

| | |
|------------------------------|--|
| Type | DN460B (UGR22 version, mini) DN461B (UGR19 version, mini) DN470B (UGR22 version, compact) DN471B (UGR19 version, compact) |
| Ceiling type | Plaster (board) ceiling |
| Light source | Non replaceable LED module |
| Power | DN460B / DN461B: 10.6 W DN470B / DN471B: 18.3 W DN470B LED30S: 29 W |
| Luminous flux | DN460B: 1200 lm DN461B: 1150 lm DN470B: 2200 lm DN471B: 2000 lm |
| Correlated Color Temperature | Warm white, 3000 K Neutral white, 4000 K |
| Color Rendering Index | >80 |
| Median useful life L70B50 | 70,000 hours |
| Median useful life L80B50 | 50,000 hours |
| Median useful life L90B50 | 25,000 hours |
| Average ambient temperature | +25 °C |

| | |
|-----------------------------|---|
| Operating temperature range | +10 to +40 °C |
| Driver | Separate |
| Mains voltage | 230 or 240 V / 50–60 Hz |
| Dimming | Non-dimming, 1-10 V control system and DALI versions |
| Options | Emergency lighting (ELB3, ELP3 and ELD3) IP20 and IP44 versions Through-wiring versions (CU3) and CU5 for DALI Glass cover (GC) and protection glass, opal (PGO) External or plug-in 3-pole Wieland/Adels connector Power Over Ethernet (PoE), Constant Light Output (CLO), Visual Light Communication (VLC) |
| Material | Housing: die-cast aluminum Reflector: plastic, aluminum coated |
| Color | White, RAL 9010 and Grey (SI) RAL 9006 |
| Optic | High-gloss mirror (C), White reflector (WR) |
| Connection | Push-in connector with pull relief (PIP) |
| Installation | Fixation by means of spring fasteners Through-wiring versions available Installation without removing lamps and optic |
| Remarks | External driver included |

Specifications are subject to change.
Latest specifications are available
on our [online catalogue](#).

GreenSpace Accent Pendant

Benefits

- decorative luminaire that optimizes the store experience
- use it to grab a shopper’s attention
- use it to complete the store’s architecture and contribute to the store’s brand
- can be enhanced with customization capabilities, see pages 24 and 25
- can be enhanced with Fresh food LED recipes and LED flavors, see pages 22 and 23.

Features

- create a sparkling white effect that brings any area in the store to life
- pendant cable lenght is variable, depending on height of store
- pendant is installed suspended from ceiling or on track
- driver integrated in compact size.



Product specifications

| Light source | System lumen package | Typical power | Efficacy | Lamp color | Driver | Optic | Colors | Connection |
|--------------|----------------------|---------------|----------|-----------------------------------|---|-----------------------------------|---|--|
| LED175 | 1700 lm | 14.4 W | 118 lm/W | 830 | Fix current PSU | MB (21°) WB (33°) VWB (58°) | WH (RAL 9003) BK (RAL 9004) SI (RAL 9006) | 3C track (PT320T) Ceiling mounting solution (PT320C) (not for DALI versions) |
| | 1800 lm | 14.4 W | 125 lm/W | 840 | | | | |
| | 1650 lm | 14.4 W | 115 lm/W | 827 | | | | |
| | 1750 lm | 17 W | 103 lm/W | PW9 | | | | |
| | 1700 lm | 20 W | 85 lm/W | CRW | | MB (23°) WB (34°) VWB (59°) | | |
| 1600 lm | 14.4 W | 111 lm/W | CH | MB (28°) WB (36°) VWB (59°) | | | | |
| LED195 | 1950 lm | 27 W | 72 lm/W | FMT | DALI dimming PSD (not for ceiling mounted version) | MB (28°) WB (36°) VWB (59°) | | |
| LED275 | 2700 lm | 23 W | 117 lm/W | 830 | VLC dimming PSD-VLC | MB (21°) WB (33°) VWB (58°) | | |
| | 2800 lm | 23 W | 122 lm/W | 840 | | | | |
| | 2600 lm | 23 W | 113 lm/W | 827 | | MB (23°) WB (34°) VWB (59°) | | |
| | 2600 lm | 33.5 W | 775 lm/W | CRW | | | | |
| | 2700 lm | 27.5 W | 98 lm/W | PW9 | | | | |
| LED395 | 3800 lm | 29 W | 131 lm/W | 830 | | MB (23°) WB (34°) VWB (59°) | | |
| | 3900 lm | 33 W | 121 lm/W | 840 | | | | |
| | 3900 lm | 32 W | 122 lm/W | 827 | | | | |
| | 3900 lm | 38.5 W | 101 lm/W | PW9 | | MB (28°) WB (36°) VWB (59°) | | |

Specifications are subject to change.
Latest specifications are available
on our [online catalogue](#).

eW Cove

Benefits

- industry-best white-light quality and color consistency
- uncompromised performance
- multiple options for design flexibility
- support for multiple voltages.

Features

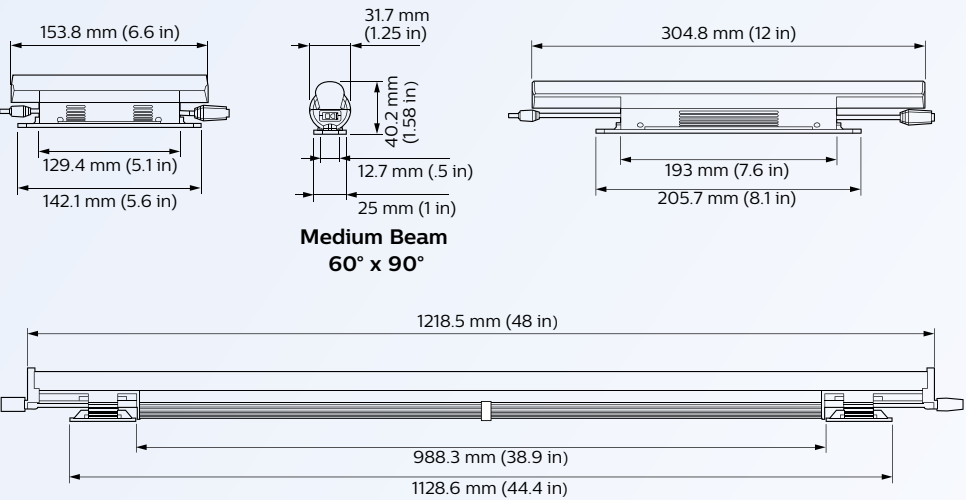
- advances in Optibin
- efficacies near or exceeding 100 lm/w
- available in four color temperatures ranging from a warm 2700 K to a cool 4000 K
- accepts power input of 120, 220 – 240, or 277 VAC.

Product specifications

| | |
|--|---|
| Type | BCX422 |
| Light source | Integral LED-module |
| Power (maximum at full output, steady state) | 152 mm: 2.3 W 305 mm: 3.3 W 1218 mm: 10 W |
| Beam angle | 110 x 110° |
| Luminous flux | • 152 mm: 111 lm (2700 K), 121 lm (3000 K), 124 lm (3500 K), 117 lm (4000 K) • 305 mm: 228 lm (2700 K), 263 lm (3000 K), 257 lm (3500 K), 247 lm (4000 K) • 1218 mm: 765 lm (2700 K), 877 lm (3000 K), 860 lm (3500 K), 819 lm (4000 K) |
| Luminaire efficacy | • 152 mm: 64 lm/W (2700 K), 71.2 lm/W (3000 K), 72.5 lm/W (3500 K), 68.9 lm/W (4000 K) • 305 mm: 74.4 lm/W (2700 K), 85.5 lm/W (3000 K), 84.2 lm/W (3500 K), 81.6 lm/W (4000 K) • 1218 mm: 81.2 lm/W (2700 K), 91.1 lm/W (3000 K), 90 lm/W (3500 K), 88.3 lm/W (4000 K) |
| Correlated Color Temperature | 2700, 3000, 3500 or 4000 K |
| Color Rendering Index | • 152 mm: 83 (2700, 3000, 4000 K), 82 (3500 K) • 305 mm: 83 (2700 K), 82 (3000, 4000 K), 81 (3500 K) • 1218 mm: 83 (2700 K), 82 (3000, 4000 K), 81 (3500 K) |

| | |
|-----------------------------|---|
| Median useful life L80B50 | 37,000 hours |
| Median useful life L90B50 | 37,000 hours |
| Average ambient temperature | 25 °C |
| Operating temperature range | -20 to +50 °C |
| Mains voltage | 120 VAC, 220 to 240 VAC, and 277 VAC / 50-60 Hz |
| Dimming | Compatible with many commercially available ELV, trailing edge or reserve-phase control dimmers |
| Material | Housing: plastic, injection-molded Lens: clear polycarbonate |
| Color | Dark grey |
| Connection | Integral male / female connectors |
| Installation | Surface mounted or in optional mounting track |
| Accessories | Mounting track, leader cable and jumper cables |
| Remarks | Due to continuous improvements and innovations, specifications may change without notice |

Specifications are subject to change.
Latest specifications are available
on our [online catalogue](#).



InteGrade



Benefits

- lights up the desire to shop with superior light quality
- every merchandise is lit under same light levels with its perfect light distribution eliminating undesirable dark zones, hot spots, glare and reflections
- can be aesthetically integrated into the chillers and freezers ensuring attention is focused on the displayed products
- best energy performance enabling total cost ownership within 3 years.

Features

- miniaturized slim design
- revolutionary optics optimized per application to direct the light exactly where needed
- enhanced whites and vivid merchandise colors thanks to premium white range with a typical CRI of 93
- natural merchandise colors with the standard color range thanks to specially formulated CRI 90 LEDs
- state-of Art Efficacy up to 125 lm/W
- long lifetime of 50,000 hours with excellent lumen maintenance
- plug and play solution with the possibility to create continuous strips by daisy chaining different lengths
- extensive range of engine lengths, fixtures, color temperatures and accessories.

Product specifications

| | |
|-------------------------------|--|
| Type | For shelf lighting: <ul style="list-style-type: none">• InteGrade engine value• InteGrade engine vision For canopy lighting <ul style="list-style-type: none">• InteGrade engine uniform beam (UB) value• InteGrade engine uniform beam (UB) vision For vertical lighting integrated indoors <ul style="list-style-type: none">• InteGrade engine narrow beam (NB) value• InteGrade engine narrow beam (NB) vision• InteGrade fixture narrow beam (NB) value• InteGrade fixture narrow beam (NB) vision |
| Lengths | <ul style="list-style-type: none">• For shelf lighting and canopy lighting: 140 mm, 575 mm, 850 mm, 1150 mm• For vertical lighting integrated indoors: 140 mm, 575 mm, 1430 mm engine lengths and 1500 mm side and center fixtures. |
| Correlated Color Temperatures | <ul style="list-style-type: none">• 3000K, 4000K, 5600K, Warm White Red color for meat• 3000K Premium White and 4000k Premium White |
| Color Rendering Index | <ul style="list-style-type: none">• 90• 93 for Premium White Colors. |
| Light Source Color | <ul style="list-style-type: none">• 930, 940, 956, WWR• 930 PW, 940 PW |
| Luminous Flux | For shelf lighting: <ul style="list-style-type: none">• InteGrade engine value (1150 mm, 940 Premium White): 840 lm• InteGrade engine vision (1150 mm, 940 Premium White): 1600 lm For canopy lighting <ul style="list-style-type: none">• InteGrade engine uniform beam (UB) value (1150 mm, 940 Premium White): 1400 lm• InteGrade engine uniform beam (UB) vision (1150 mm, 940 Premium White): 2200 lm For vertical lighting integrated indoors <ul style="list-style-type: none">• InteGrade engine narrow beam (NB) value (1430 mm, 940 Premium White): 1300 lm• InteGrade engine narrow beam (NB) vision (1430 mm, 940 Premium White): 3100 lm• InteGrade fixture narrow beam (NB) value (1500 mm, 940 Premium White):<ul style="list-style-type: none">– Side (SD) version: 1300lm– Center (CTR) version: 2600 lm• InteGrade fixture narrow beam (NB) vision (1500 mm, 940 Premium White):<ul style="list-style-type: none">– Side (SD) version: 3100lm– Center (CTR) version: 6200 lm |

| | |
|---------------------------------------|--|
| Power | For shelf lighting: <ul style="list-style-type: none">• InteGrade engine value (1150 mm, 940 Premium White): 6,7 W• InteGrade engine vision (1150 mm, 940 Premium White): 13,8 W For canopy lighting <ul style="list-style-type: none">• InteGrade engine uniform beam (UB) value (1150 mm, 940 Premium White): 13 W• InteGrade engine uniform beam (UB) vision (1150 mm, 940 Premium White): 20 W For vertical lighting integrated indoors <ul style="list-style-type: none">• InteGrade engine narrow beam (NB) value (1430 mm, 940 Premium White): 11W• InteGrade engine narrow beam (NB) vision (1430 mm, 940 Premium White): 27.2W• InteGrade fixture narrow beam (NB) value (1500 mm, 940 Premium White):<ul style="list-style-type: none">– Side (SD) version: 11W– Center (CTR) version: 22W• InteGrade fixture narrow beam (NB) vision (1500 mm, 940 Premium White):<ul style="list-style-type: none">– Side (SD) version: 26.3W– Center (CTR) version: 52.6W |
| Beam angle & Light Distribution | For shelf lighting: 70° ± 5° For canopy lighting : 40° ± 5° For vertical lighting integrated indoors : 30° ± 5° |
| Standard Deviation of Color Matching: | 5 with a tolerance of +/- 0.005 color point measurement |
| Median useful lifetime | L70B50: >70000 Hrs @ Tambient = 50C |
| Median useful lifetime | L80B50: >50000 Hrs @ Tambient = 50C |
| Average ambient temperature | Tambient = -30 to 300C |
| Operating temperature range | Tambient = 50C |
| Driver | Constant voltage 24V external driver |
| Mains Voltage | 120V-240V/ 50-60 Hz |
| Dimming | Pulse Width Modulation (PWM) dimming with external controller |
| Color | |
| Heatsink | Anodized aluminum grey |
| Cover | For shelf lighting: <ul style="list-style-type: none">• Diffused cover: diffuse colourless For canopy lighting <ul style="list-style-type: none">• Uniform beam (UB) optics: diffuse colourless For vertical lighting integrated indoors <ul style="list-style-type: none">• Narrow beam (NB) optics: clear transparent |
| End caps | RAL 7035 |
| Connection | DC plug |
| Installation | Fixation by means of accessories. Connectors, cables and mounting means are available. |

PowerBalance KC



Benefits

- delivers substantial savings on operating costs compared to T5
- fully compliant with relevant office norms
- very efficient luminaire enabling up to 80% energy savings
- 1:1 replacement of PL-L fittings.

Features

- state-of-the-art optical/LED technology
- high efficacy:115 lm/W
- UGR<19 and L65 ≤ 3000 cd/m2
- choice of dimensions and options to suit different applications and needs
- suitable for direct replacement of T5 luminaires.

Product specifications

| | |
|------------------------------|--|
| Type | RC360B (module size 600x600 mm versions) RC362B (module size 625x625 mm versions) |
| Ceiling type | Exposed T-bar ceiling |
| Ceiling grid | RC360B: module size in length: 600 mm RC362B: module size in length: 625 mm |
| Light source | Non-replaceable LED module |
| Power | 23,5 to 31 W (depending on type) |
| Beam angle | 90° |
| Luminous flux | 2800 or 3400 lm (depending on configuration) |
| Correlated Color Temperature | 3000 or 4000 K |
| Color Rendering Index | >80 |
| Median useful life L70B50 | 70,000 hours |
| Median useful life L80B50 | 50,000 hours |
| Median useful life L90B50 | 25,000 hours |
| Driver failure rate | 1% per 5000 hours |

| | |
|-----------------------------|--|
| Average ambient temperature | +25 °C |
| Operating temperature range | +10 to +40 °C |
| Driver | Built-in |
| Power/Data supply | Xitanium driver |
| Mains voltage | 220-240 V / 50 Hz |
| Dimming | DALI dimmable |
| Options | Emergency lighting (integrated): 3 hours (EL3) |
| Material | Housing: coated steel and plastic Rim: powder coated steel Optics: plastic |
| Color | White |
| Connection | Wieland connector (W) Push-in connector with pull relief (PIP) |
| Maintenance | Optical module sealed for life; no internal cleaning required |
| Installation | Exposed ceilings: in lay, no brackets needed Through-wiring not possible |

Specifications are subject to change.
Latest specifications are available
on our [online catalogue](#).

Specifications are subject to change.
Latest specifications are available
on our [online catalogue](#).

Outdoor lighting

The approach roads and parking facilities give motorists their first impression of your petrol station. The right lighting will make them feel welcome and safe by providing good visibility and by minimizing pockets of darkness.

All of our luminaires are designed to provide precisely the right levels of light, in the right place, at the right time. Reduce your energy bills by using our energy-efficient light sources for outdoor parking areas that only need night-time illumination. Or if you want to go extra green by installing a solar-based system, we can help with that, too.

Our product families offer options that let you optimize performance and pay-back time:

- highest energy efficiency
- best total cost of ownership by balancing initial investment and energy efficiency.

Range overview outdoor pole lighting



LumiStreet

- cost-effective LED alternative to conventional street lights
- easy to install
- long lifetime and low maintenance cost.



ClearWay

- all benefits packaged in one single luminaire architecture
- easy to install
- low initial cost and reasonable Total Cost of Ownership
- Service tag*.

* Equipped with Philips Service tag (see more on page 44)

LumiStreet

Benefits

- cost-effective LED alternative to conventional street lights
- easy to install
- long lifetime and low maintenance cost

Features

- basic, compact design
- high-quality components
- wide choice of optics for increased application efficiency
- available in two sizes
- low weight

Product specifications

| | |
|------------------------------|---|
| Type | BGP212 (mini version) BGP213 (small version) BGP253 (medium version) BGP214 (large version) |
| Light source | Integral LED-module |
| Power | 11 to 122 W (depending on the version) |
| Luminous flux | Core Mini version: from 1500 to 7100 lm (system) Medium version: from 8000 to 15000 lm (system) Performer Mini version: from 700 to 5300 lm (system) Medium version: from 5000 to 11700 lm (system) Large version: from 5000 to 20900 lm (system) |
| Luminaire efficacy | 91-142 lm/W (depending on the version) |
| Correlated Color Temperature | 4000 K (3000 K upon request) |
| Color Rendering Index | > 70 (4000 K) > 80 (3000 K) |
| Useful life | 100,000 hours min L84B10 (Core), min L86B10 (Performer Small), min L88B10 (Performer Large) at 25 °C ambient temperature |
| Operating temperature range | -30 to +35 °C (wider range upon request) |
| Driver | Built-in (self-ballasted LED-module) |
| Mains voltage | 220-240 V / 50-60 Hz |
| Dimming | LightWave LumiStep DynaDimmer |

| | |
|--------------|--|
| Options | Constant light output (CLO) External dimming via DALI (D9) External cable 4, 6, 8, 10, 12, 15, 22 m Surge protection device (up to 10 kV) |
| Optic | Core version: Distribution Medium (DM) or Distribution Wide (DW) Performer version: Distribution Narrow (DN10), Distribution Medium (DM10, DM11, DM12, DM50), Distribution Wide (DW10) Other premium optics upon request |
| Material | Upper frame: die-cast aluminum, high-pressure Electric cover: die-cast aluminum, high-pressure Cover: glass, thermally hardened |
| Color | Standard light grey, (RAL7035), other colors upon request |
| Connection | Screw connection block or as option an external IP connector |
| Maintenance | Opening cover with 4 screws |
| Installation | Side entry mounting: Ø 32-48 or 48-60 mm Post-top mounting: Ø 32-48, 48-60 or 76 mm Recommended mounting height: 4-12 m Standard tilt angle post top: +10 to -90° Max SCx: BGP212: 0.03 m² BGP213: 0.033 m² BGP214: 0.037 m² |

Specifications are subject to change.
Latest specifications are available on our [online catalogue](#).

ClearWay gen2

Benefits

- all benefits packaged in one single luminaire architecture
- easy to install
- low initial cost
- reasonable Total Cost of Ownership
- each luminaire is uniquely identifiable thanks to Philips Service tag

Features

- one flexible design variant offering different options depending on the needs of the application
- compact and efficient design
- tilt regulation without needing to open cover

Product specifications

| | |
|--------------------------------------|--|
| Main color of the luminaire | Gray |
| Dimming | No, yes |
| Driver | Power supply unit (Power supply unit) |
| Driver failure rate at 5000h in % | 0.5 % |
| Initial correlated color temperature | 3000, 4000 K |
| Initial input power | 12.6, 13.6, 14.8, 15.6, 16.3, 17.6, 18.8, 20.5, 21.5, 22, 23, 23.1, 23.5, 25, 26.5, 27, 28, 28.5, 30, 32, 33.5, 35, 36.5, 37.5, 39, 40, 41.5, 42.5, 42.7, 48, 50, 53, 57, 58, 62, 63, 67, 69, 70, 77.5, 78, 80 W |
| Initial LED luminaire efficacy | 99, 101, 106, 108, 113, 115, 121, 122, 123, 124, 125, 126, 128, 130, 131, 132, 133, 134, 136, 137, 138, 139, 141, 143, 146, 147, 151, 152, 159 lm/W |

| | |
|-----------------------|---|
| Initial luminous flux | 1496, 1584, 1800, 2024, 2200, 2250, 2610, 2700, 2904, 2950, 3080, 3150, 3500, 3520, 3600, 3696, 3960, 4400, 4680, 4752, 5300, 5632, 5760, 5984, 6800, 6864, 7200, 7392, 7830, 8460, 8526, 8700, 9000, 9135, 9460, 10320, 11400 lm |
| Input voltage | 220 to 240 V |
| Inrush current (A) | 22, 27, 46, 53 A |
| Light source color | 740 neutral white, 830 warm white |
| Material | Housing: aluminum die-cast |
| Optic | Distribution Medium, distribution Medium 11, distribution Medium 50 |
| Optical cover | Polycarbonate |
| Warranty period | 5 years |

Specifications are subject to change.
Latest specifications are available on our [online catalogue](#).



Car wash and workshop lighting

The car wash can be a valuable income stream for your petrol station as well as a practical and fun service for customers. Our solutions range from energy-efficient, waterproof LED luminaires to total car wash concepts that use color in exciting and dynamic ways.

Choose the product **best-suited to your needs:**

- waterproof
- waterproof and chemical resistant
- integrated motion sensors
- battens for your workshop.

Range overview car wash lighting



Pacific LED

- excellent optics with no variation of color over angle and no striping effects
- high efficiency and attractive TCO with fast repayment in high performance applications where efficiency >140 lm/W
- extensive application coverage.



CoreLine Batten

- up to 50% energy savings compared with TL-D
- reliable LED technology – maintenance-free
- direct replacement for conventional battens in terms of light performance, installation flexibility and length.

Pacific LED

Benefits

- high-quality optics with a nice uniform light distribution without visible striping or color artefacts for improved visual guidance.
- wide variety of beam shapes for an optimized lighting scheme for a wide range of applications.
- hassle-free installation and maintenance, with toolless access to the gear tray and an end-cap with built-in connectors.

Features

- wide range of optics (narrow, wide, very-wide and opalized) and lumen packages with excellent glare control.
- highly efficient performance, 140 lm/W
- IP66 – dust penetration-protected, jet-proof
- GreenParking system increases energy efficiency by automatic dimming
- lifetime up to 100,000 hours at L70B50, ensuring a longer service life.

Product specifications

| | |
|------------------------------|---|
| Type | WT471 (chemical resistant) |
| Light source | Replaceable LED module |
| Beam angle | NB, WB, VWB, O |
| Luminous flux | 2300, 3400, 4200, 6400, 8000 (4000 K CCT) |
| Correlated Color Temperature | 4000 or 6500 K |
| Color Rendering Index | 80 |
| Useful life L70B50 | 70,000 hrs |
| Average ambient temperature | 25 °C |
| Operating temperature range | -30 to +45 °C |

Note: WT471 chemical resistant version also available.



| | |
|---------------|---|
| Driver | Built-in |
| Mains voltage | 220-240 V / 50-60 Hz |
| Dimming | DALI |
| Material | Tube: PC |
| Color | Transparent |
| Optical cover | PC |
| Connection | Push-in connector (PI) or with pull relief (PIP) |
| Maintenance | Tool-less access for maintenance |
| Installation | Individual or in line; clicking the luminaire into pre-screwed ceiling brackets or suspended mounting with chains or on light-line systems. Through-wiring possible |

Specifications are subject to change. Latest specifications are available on our [online catalogue](#).

CoreLine Batten

Benefits

- up to 50% energy savings compared with TL-D
- reliable LED technology and maintenance- free
- direct replacement for conventional battens in terms of light performance, installation flexibility and length.

Features

- reliable integrated LED technology, ensuring maintenance-free installation and a long lifetime
- can be used to replace traditional 2x18W, 2x36W, 2x58W TL-D battens
- through-wiring standard included
- frosted diffuser ensures visual comfort.

Product specifications

| | |
|--|--|
| Type | BN124C |
| Light source | Non-replaceable LED module |
| Power (maximum at full output, steady state) | 19 W (2100 lm version) 38 W (4100 lm version) 60 W (6400 lm version) |
| Beam angle | 120° |
| Luminous flux | 2100 lm (600 mm version, 4000 K) 1900 lm (600 mm version, 3000 K) 4100 lm (1200 mm version, 4000 K) 3800 lm (1200 mm version, 3000 K) 6400 lm (1500 mm version, 4000 K) 6000 lm (1500 mm version, 3000 K) |
| Correlated Color Temperature | 3000 or 4000 K |
| Color Rendering Index | ≥ 80 |
| Median useful life L70B50 | 50,000 hours |
| Median useful life L80B50 | 30,000 hours |
| Median useful life L90B50 | 15,000 hours |
| Driver failure rate | 1% per 5000 hours |

Specifications are subject to change. Latest specifications are available on our [online catalogue](#).



| | |
|-----------------------------|--|
| Average ambient temperature | +25 °C |
| Operating temperature range | 0 to +35 °C |
| Driver | Built-in, not replaceable |
| Mains voltage | 220-240 V / 50-60 Hz |
| Dimming | Not dimmable |
| Material | Housing: steel Diffuser: polycarbonate, extruded |
| Color | White |
| Optical cover | Polycarbonate, frosted |
| Connection | Push-in connector with pull relief |
| Maintenance | No internal cleaning required |
| Installation | Ceiling mounted bracket included Through-wiring integrated (TW1) The luminaire can be installed without removing the lightsource and cover |

Philips Service tag

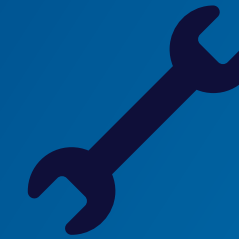
Since LED luminaires require different competencies and processes for maintenance, fault finding and repair, our products and its components are designed with serviceability in mind. Furthermore, to provide better support, 24/7 access to information and spare parts ordering, all products and packages can be identified by the unique Philips Service tag QR code.

Why Philips Service tag?



Easy access to relevant information

Improving installation process by providing easy access to product configuration information



More effective maintenance

Enabling more effective maintenance operations by identifying spare parts



Digital maintenance

Enabling you to pre-program spare parts to factory settings

Download the Philips Service tag app for iOS and Android.



“

The greatest value of the Philips Service tag is that it enables us **to save precious time and avoid human errors**”



Instant access to procedures, spare part list and programming

This tag features a QR-based identification system that gives you instant access to critical information during unpacking, installation, diagnostics, fault reporting and spare part programming. Simply scan the tag with a smartphone or tablet running the Philips Service tag app, and the contents of the box plus installation information are described. To assist in diagnosing breakdowns, scanning the tag provides the troubleshooting guide applicable to that luminaire. Sourcing spare parts and 'one touch' programming of parts to original settings can also be done using the app. It's that simple.



For more information about Philips Service tag and to see the full list of products equipped with the QR code, please visit philips.com/servicetag

Why choose Philips?

Why choose Philips?

A lighting service that fits your business needs



Global presence and local experience delivering multi-tiered support



World-class innovation capabilities, deep application and system expertise



One-stop shop: solutions and services across the lighting value chain



Proven record of quality and reliability – no unpleasant surprises

Creating together, driven by your needs

We love collaborating with customers. Our bespoke lighting installations enable you to:

- attract and engage customers
- strengthen the customer-brand connection
- make fact-based business decisions
- set and track KPIs
- save energy, improve efficiency and reduce running costs.

Successful projects around the world



