



**PHILIPS**

ActiveSite

# Peace of mind, around the clock

Remotely monitor and manage dynamic architectural  
LED lighting systems with cloud-hosted connected  
lighting software and services



# Refresh your brand, **and relax**

Facility managers and lighting programmers are not always present to monitor and manage lighting installations. Even when they are onsite, they need an automated system to diagnose system issues, ensure performance, and realize cost savings.

Color-changing LED lighting transforms buildings, revitalizes neighborhoods, encourages commerce, creates spectacle, enhances branding, and saves energy in installations around the world.

Until now, managing dynamic architectural LED installations has been a challenge. The only way to know if a site is working properly is to inspect it manually, which can be time-consuming and costly. It isn't always possible to refresh content remotely, or without taking an installation offline. And there's no way to perform historical analysis on system performance or to keep track of site assets over time.

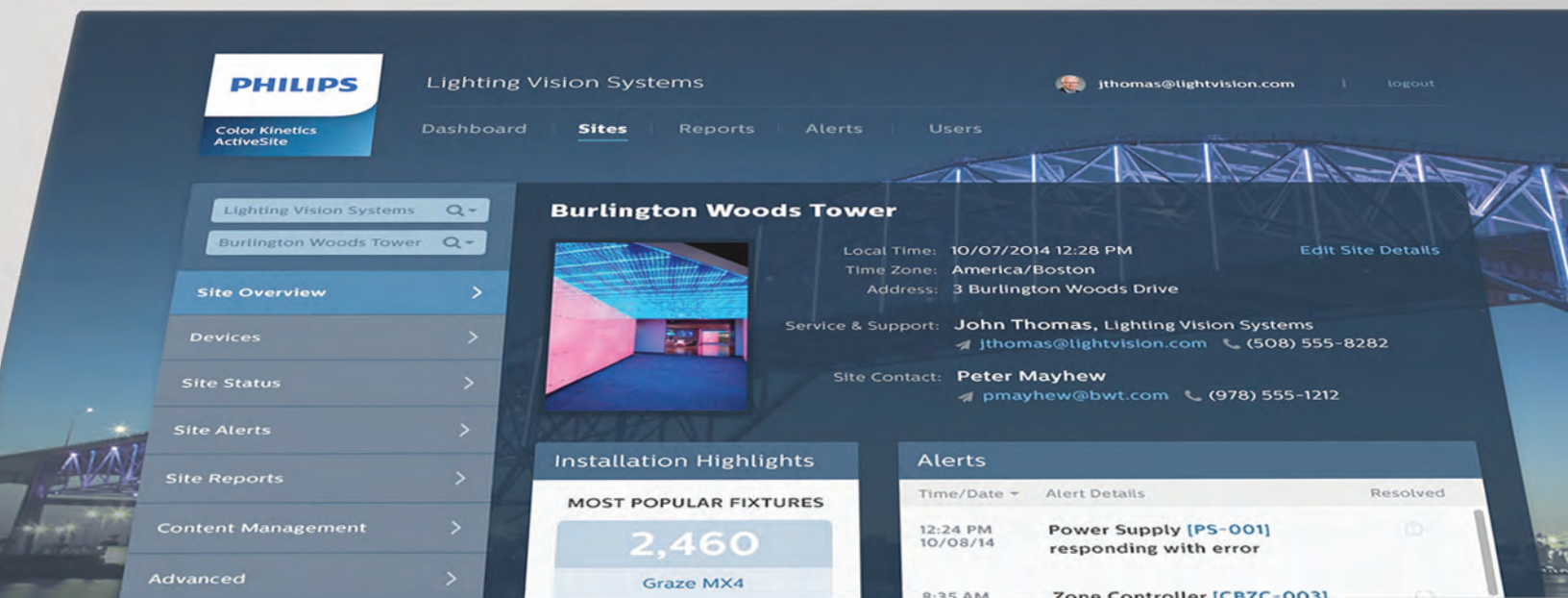
## **Imagine**

if there were a way to check the status and operations of dynamic architectural LED installations – instantly, wherever you are and whenever you want. Imagine if you could update light shows and effects remotely and instantaneously, keeping your brand relevant and fresh. Imagine if you could pinpoint and accurately diagnose system issues through the cloud, with no system downtime or manual inspections.



# Introducing **ActiveSite**

ActiveSite is the first ever cloud-hosted connected lighting system for remotely monitoring, managing, and maintaining architectural LED lighting installations. ActiveSite protects your brand and lighting system investments by ensuring optimal lighting system performance.



## **Enjoy peace of mind**

Choose the level of service you need. Service teams can proactively optimize system operations 24/7 with remote diagnostics and historical analysis and reporting. They can even send technicians on site to make adjustments and repairs.

## **Enhance your brand with fresh lighting content**

Remotely refresh and trigger light shows from a laptop or tablet. Easily create and upload new shows from anywhere in the world — all while maintaining uninterrupted operations.

## **Manage multiple sites centrally**

Monitor and manage multiple installations using a single dashboard, from anywhere in the world.

## **Gain deeper insight**

Stay informed with monthly reports and daily email alerts. Gather the insight and information to prove that the system is achieving performance targets over its lifetime.

## **Go digital**

Digitalized asset management replaces paper trails with electronic record-keeping of all connected devices.



# Being connected changes everything

Connected lighting combines the strength of intelligent illumination with the power of data and connectivity to give customers the best possible illumination experience and extraordinary value beyond illumination.

ActiveSite integrates connected luminaires, digital lighting controls, and sophisticated lighting management software. Connected luminaires share data about their status and operations with ActiveSite lighting management software running in the cloud. System users can remotely monitor, manage, and maintain each connected luminaire from anywhere in the world, at any time. Historical analysis and reporting tools offer unprecedented insight into system operations, allowing system managers to evaluate and optimize performance.

Content management tools let lighting programmers interact with and refresh lighting content remotely, affording new ways to transform environments with dynamic LED lighting systems.



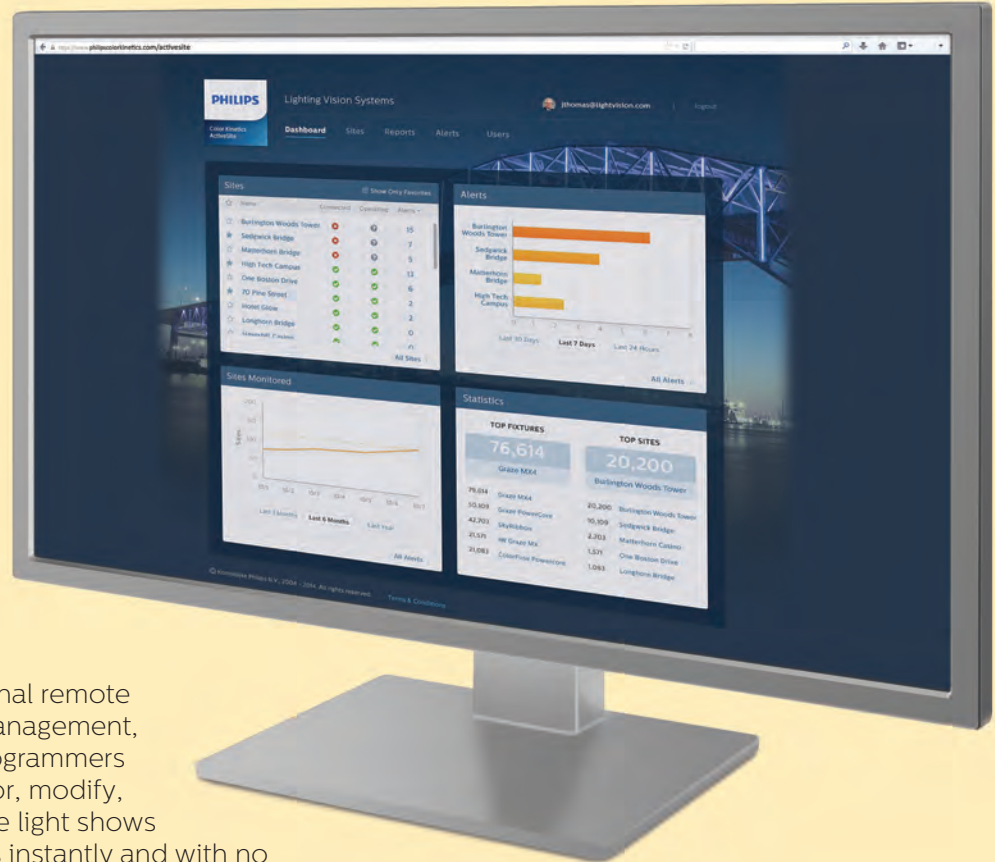
Cloud-Based  
**ActiveSite**  
Software Application



# Harness **the power of the cloud**

Because there's no software to install or servers to buy and maintain, the cloud-based ActiveSite software platform lowers install and maintenance costs. And because you access the software with any authorized device via the web, ActiveSite offers rapid deployment with seamless feature updates and minimal IT involvement.

To make lighting management as easy and reliable as possible, all data backup, recovery, and security operations are supported by Philips.



With optional remote content management, lighting programmers can monitor, modify, and change light shows and effects instantly and with no system downtime, for anywhere in the world. The ActiveSite content management dashboard gives content managers access to all installations in one centralized location.

# Key features

## Dashboard

Centralized view of all managed installations



## Secure connectivity

Industry-standard encryption techniques



## Device detection and remote switching



## Temperature monitoring

Remote notification of operating temperature



## Asset management

Digital record-keeping for all devices



## Charts

Standard and customizable templates



## Device properties

including serial number, start DMX address, firmware version, and IP address



## Reports

Standard and customizable templates



## System diagnostics

Offsite configuration of network devices



## E-mail alerts

Automated based on user profile



## Alarm management

for fixtures, power / data supplies, and controllers



## Content management

Remotely monitor, edit, and change light shows and effects



# Industry-proven technology

## **Reliable communications**

Philips Color Kinetics patented KiNET communications protocol supports two-way communications among connected devices for real-time monitoring and management

## **Uninterrupted performance**

Philips Color Kinetics unique Livescan technology seamlessly monitors fixtures to eliminate visual distractions and service interruptions during device scans

## **Seamless integration**

Rapid and easy installation for both existing and new Philips Color Kinetics installations

## **Secure data**

Uses encrypted HTTPS for communications between the cloud and lighting systems, as well as long-term public and secret encryption keys and verified security certificates

## **Integrated landscape**

Philips Color Kinetics ecosystem of controllers, power / data supplies, connected luminaires, and ActiveSite devices deliver consistent performance across the portfolio

## **Optimized monitoring**

Quickly and reliably scan large installations



## For more **information**

For more information on ActiveSite, including details on how to order, contact your local Philips Lighting Representative or Philips Lighting System Service Center, or visit [www.philipscolorkinetics.com](http://www.philipscolorkinetics.com) or [www.usa.lighting.philips.com](http://www.usa.lighting.philips.com).



Copyright © 2015 Philips Solid-State Lighting Solutions, Inc. All rights reserved. Chromacore, Chromasic, CK, the CK logo, Color Kinetics, the Color Kinetics logo, ColorBlast, ColorBlaze, ColorBurst, eW Fuse, ColorGraze, ColorPlay, ColorReach, iW Reach, eW Reach, DIMand, EssentialWhite, eW, iColor, iColor Cove, IntelliWhite, iW, iPlayer, Optibin, and Powercore are either registered trademarks or trademarks of Philips Solid-State Lighting Solutions, Inc. in the United States and / or other countries. All other brand or product names are trademarks or registered trademarks of their respective owners. Due to continuous improvements and innovations, specifications may change without notice.

BRO-000108-00

Philips Color Kinetics  
3 Burlington Woods Drive  
Burlington, Massachusetts 01803 USA  
Tel 888.385.5742  
Tel 617.423.9999  
Fax 617.423.9998  
[www.philipscolorkinetics.com](http://www.philipscolorkinetics.com)  
[@colorkinetics](https://twitter.com/colorkinetics)