

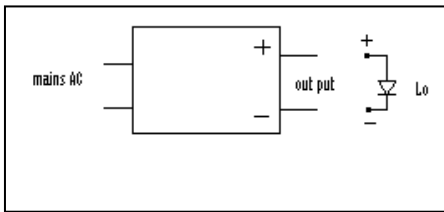
CertaDrive LED 9W 300mA 240V - For Indoor Applications

| 929000957914 | |
|-----------------|-------------------------------------|
| Brand Name | PHILIPS LED |
| Description | CertaDrive LED Driver 9W 300mA 240V |
| Input Voltage | 140-280V |
| Input Frequency | 50/60 Hz |

Electrical Specifications

| Input Power (W) | Output current (mA) | Output Voltage (V) | Max T Case (Deg C) | Output Power (Max) | Max THD (%) | Min Power Factor | Surge protection (KV) | IP | Application | Weight (gm) |
|-----------------|---------------------|--------------------|--------------------|--------------------|-------------|------------------|-----------------------|----|-------------|-------------|
| 11.0 | 300 | 20 - 30 | 70 | 9 | 60 | ≥ 0.75 | 2.0 | 20 | Indoor | 95 |

Wiring Diagram LED Driver



Features

| | |
|--------------------------|------|
| Overvoltage Protection | 300V |
| Short circuit Protection | Yes |
| Open circuit protection | Yes |
| LED Reverse protection | Yes |
| Mounting Foot Holes | 70mm |

Dimension Figures

| | | |
|--------------------------|------------------------|-----------|
| Dimensions | 80mmx40mmx22mm | |
| Fixing | Suitable for M4 Screws | |
| Connector(Wire Assembly) | Mains | Connector |
| | Output | Connector |
| | Grey | Negative |
| | Orange | Positive |

