

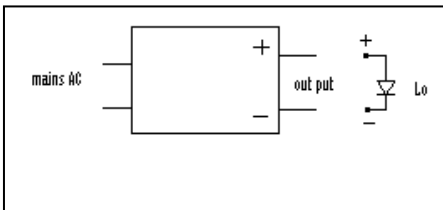
## Xtanium LED Driver LED 40W 280mA 142V - For Indoor Applications

929000953106	
Brand Name	PHILIPS LED
Description	Xtanium LED Driver 40W 280mA 142V
Input Voltage	220-240V
Input Frequency	50/60 Hz

### Electrical Specifications

Input Power (W)	Output current (mA)	Output Voltage (V)	Max T Case (Deg C)	Output Power (Max)	Max THD (%)	Min Power Factor	Surge protection (KV)	IP	Application	Weight (gm)
45	280	120 - 142	75	40	10	≥ 0.95	2.5	20	Indoor	130

### Wiring Diagram LED Driver



### Features

Overvoltage Protection	Shutdown @ 300V
Short circuit Protection	Yes
Open circuit protection	Yes
LED Reverse protection	Yes
Mounting Foot Holes	253 mm

### Dimension Figures

Dimensions	265mmx30mmx21mm	
Fixing	Suitable for M4 Screws	
Connector(Wire Assembly)	Mains	Connector
	Output	Connector
	Black	Negative
	Red	Positive

