

PHILIPS

Case study

Public

Street Lighting

Major improvements for Isle of Wight's street lighting

Location: Isle of Wight

Philips Lighting: Stela, Luma,

CityTouch LightWave and Starsense Wireless.



“ Following a competitive tender exercise, Philips was selected as our lighting partner for the project **because of their experience, product quality and the support they were able to offer throughout the project,**”

Mike Pearson
Ringway Island Roads' Street Lighting Supervisor

Fast Facts

Customer
Ringway Island Roads, Isle of Wight Council

Location
Isle of Wight

Philips Solution
Stela, Luma, CityTouch LightWave and StarSense Wireless.



A programme to upgrade all street lighting on the Isle of Wight will deliver significant energy savings, improve visibility, reduce light pollution and free up funds for alternative investment.

The upgrade of lighting and controls is part of a 25 year programme being delivered through the Ringway Island Roads PFI to upgrade, enhance and maintain 804km of roads within the Isle of Wight's highway network.

“Upgrading the existing high pressure sodium (SON) street lighting to Philips LED lanterns began in April 2013 and is due to be completed within the first three years of the contract,” explained Ringway Island Roads' Street Lighting Supervisor Mike Pearson. “Following a competitive tender exercise, Philips was selected as our lighting partner for the project because of their experience, product quality and the support they were able to offer throughout the project,” he added.

The Right Lighting:

Existing 50W SON lanterns in residential streets are being replaced on a one-for-one basis by 13W and 24W Stela lanterns, providing a reduction in installed electrical load of over 50%. In other areas, Philips Luma lanterns have been installed, with Mini Luma lanterns used in areas of outstanding natural beauty. Over 12,000 street lights will have been upgraded by the time the project is complete, with older columns being replaced as well.



“The CityTouch system provides the control to achieve additional energy savings over and above those delivered by reducing the installed load,” Mike Pearson continued. “For example, we are able to dim the lighting at quieter times of the night and the system allows us to set up different dimming regimes for different types of road. We are also introducing ‘trimming’, whereby lighting comes on a few minutes later and goes off a few minutes earlier. The difference is unnoticeable but spread over the entire network will yield considerable savings.”

“Another advantage of the CityTouch system is that we can monitor individual lanterns remotely, which reduces ‘scouting’ and means we can respond to faults without waiting for a report. This will enable us to provide an improved service to the island’s residents.”

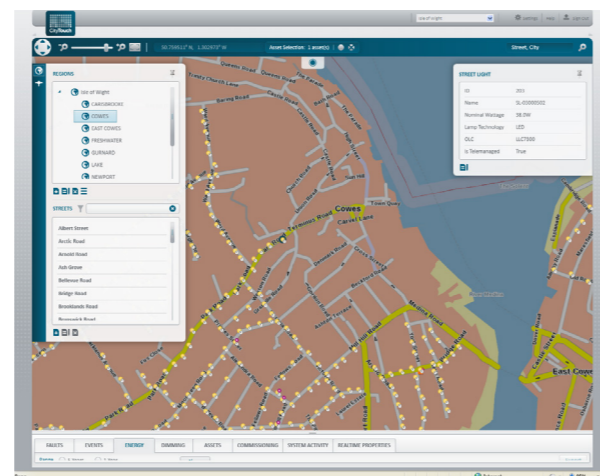
If you would like to see more projects or have an enquiry, please visit us at www.philips.co.uk/lighting or email: lighting.uk@philips.com



In addition, some heritage lighting is being replaced with specially manufactured lanterns equipped with Philips optics.

All of the lanterns were selected for their ability to provide the required light distribution with minimal upward light or light spillage. As a result, Island Roads has received an award from the Campaign to Protect Rural England for its commitment to ‘Dark Skies’, reflecting the significant reduction in light pollution that has already been achieved.

All of the new lighting assets, including the heritage lighting, will be linked to a Philips CityTouch LightWave central lighting management system that will allow each luminaire to be controlled individually or in groups. The lanterns are connected to the LightWave system using the StarSense Wireless system, via the island’s mobile phone networks. This required development of new antennae designs to ensure comprehensive coverage.



“After some initial reservations by residents the new lighting has been well received and many people are now very keen to have their street’s lighting upgraded. Local astronomers are also pleased as they now have a better view of the night sky”

Mike Pearson
Ringway Island Roads’ Street Lighting Supervisor



©2015 Koninklijke Philips Electronics N.V.
All rights reserved. Reproduction in whole or in part is prohibited without the prior written consent of the copyright owner. The information presented in this document does not form part of any quotation or contract, is believed to be accurate and reliable and may be changed without notice. No liability will be accepted by the publisher for any consequence of its use. Publication thereof does not convey nor imply any license under patent- or other industrial or intellectual property rights. Date of release: January 2015

Contact details:

Guildford
Philips Lighting, Philips Centre, Guildford Business
Park, Guildford, GU2 8XH
Tel: 0845 601 1283

Dublin
Philips Electronics Ireland Ltd, Philips House, South
County Business Park, Leopardstown, Dublin 18
Tel: +353 1 764 0000

Email: lighting.uk@philips.com
www.philips.co.uk/lighting