

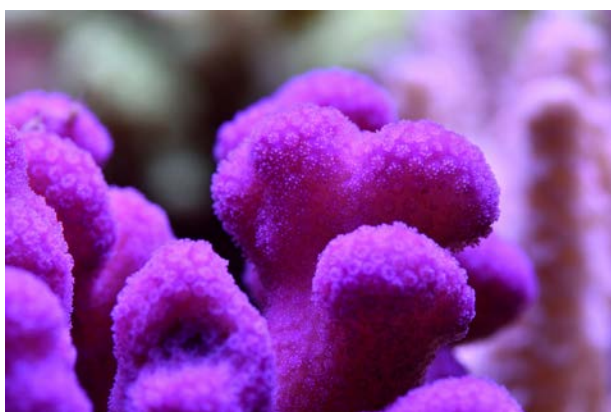
## CoralCare Review by Dr. Jens Standke

I have been using CoralCare lighting from March 11, 2016 until today, May 18, 2016. The dimensions of my Zeovit DSPS tank are 120 x 70 x 65 cm and there are 3 CoralCare fixtures installed above the tank. The CoralCare lighting settings are: 49% intensity, 90% warm and 100% blue.

I am particularly pleased with the fact that, since I have been using the CoralCare lighting, the color of the corals is every bit as good as it is under T5. The green color in particular is extremely vivid, just as it is in corals that have been freshly imported from Fiji or Australia. An additional benefit is the 50% reduction in power consumption compared with the previous 10 x T5 lighting. The resulting reduction in the amount of heat generated in the tank means it is no longer necessary to use a cooling device and that, in turn, gives rise to further savings on electricity. Lastly, it is worth mentioning that I no longer have to change the tubes twice a year. In the past this used to cost me approximately 360 euros every year. This means that, in terms of light intensity and light spectrum, CoralCare represents a constant light source. This continuity has a positive effect on the aquarium, especially on an aquarium with stony corals. In my opinion, for stony corals the growth rate and the growth form are exactly the same as they are under T5 lighting.

CoralCare has so far been operating reliably with no faults. As a Zeovit user, there is no reason for me to change back to T5 lighting because there are no disadvantages with CoralCare, in fact there are only benefits. For this reason I can fully recommend CoralCare lighting to everyone who has an aquarium, whether they have a large or a small tank.

September 6, 2016:



May 18, 2016:

