

PHILIPS

Fortimo

LED modules

SLM gen 7 HD



Exceptional
light quality,
**ultimate
flexibility**

For today, for tomorrow

High-density spot light LED modules that sell

In fashion retail, the physical shopping experience is gaining importance as the decision moment of the customer in the store is key to generate sales, even for sales via online platforms. This makes it essential to create an atmosphere that keeps customers in the store.

Creating an attractive fashion retail experience requires lighting that brings out rich colors and stunning whites as well as allowing different beam angles to be used to create contrast and drama. We help you to take retail lighting to the next level with LED modules that ensure merchandise – and your brand – shines. The latest generation, Fortimo LED SLM gen 7, extends the possibilities to differentiate by combining a high punch effect with narrow beam optics in miniaturized luminaire designs.



Better aesthetics and narrower beam angles

Philips Fortimo SLM LED modules deliver superior Quality of Light. The latest to join the growing portfolio is a high-density LED module for spot applications. The Fortimo SLM gen 7 HD features a larger number of LEDs on a small surface to produce a narrow beam with high output. The Fortimo LED SLM HD portfolio makes it possible to reach up to 1500lm out of a COB with a LES size of only 6.5mm, and up to 3000lm out of a COB with a LES size of just 9 mm. The small LES size enables more efficient optics to direct the light where it's needed, while the compact size gives more freedom in design in terms of aesthetics, beam angle and miniaturization.

Fortimo LED SLM gen 7 HD premium white & premium color

Premium white offers excellent light quality with a very high energy efficiency. It's specially designed for spot and accent

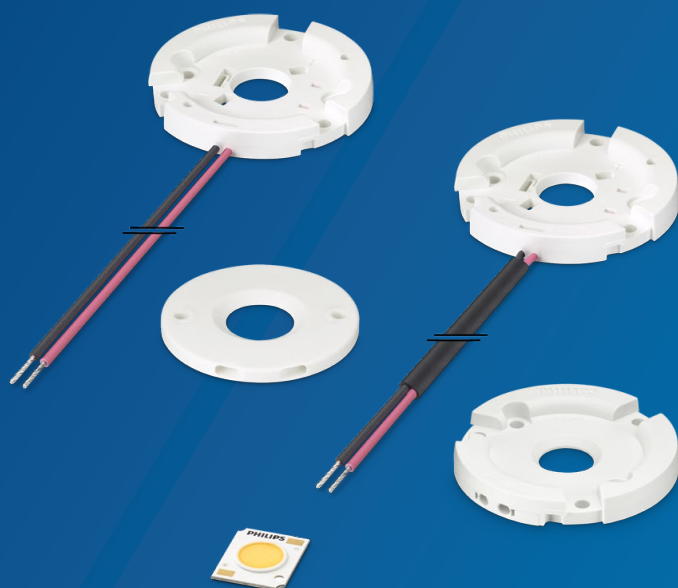
lighting in fashion retail, hospitality and supermarket applications where light quality and total cost of ownership are key requirements. Premium color offers a fascinating new light spectrum that is optimized to enhance merchandise with a rich, saturated palette that brings out the best in colors, whites and blacks. In suits, beachwear, lingerie and denim. Or in car showrooms, electronics stores and cosmetic departments. At the same time, it has a strong white effect on a store's ambience, which appears bright and energized. It engages customers on two levels; they are attracted to the vibrant products on display, but they also connect with the brand atmosphere. And because everything is perfectly balanced, the whole experience is easy on the eye. Combined with the Fortimo SLM HD technology, it is the perfect portfolio to offer the best quality of light combined with miniaturization and energy efficiency for narrow beam, high punch applications.



Retail

Key features and benefits

Fortimo SLM gen 7 HD



Up to 3000 lumen with a LES size of 9 mm

High density for optimized luminaire performance

Small Light Emitting Surface (LES) size of 6,5mm and 9mm for high efficient narrow beam optics

Exceptional rendering of whites and rich colors

Extensive Choice of color temperatures, CRI and spectra

Efficacies up to 115 lm/W* or higher

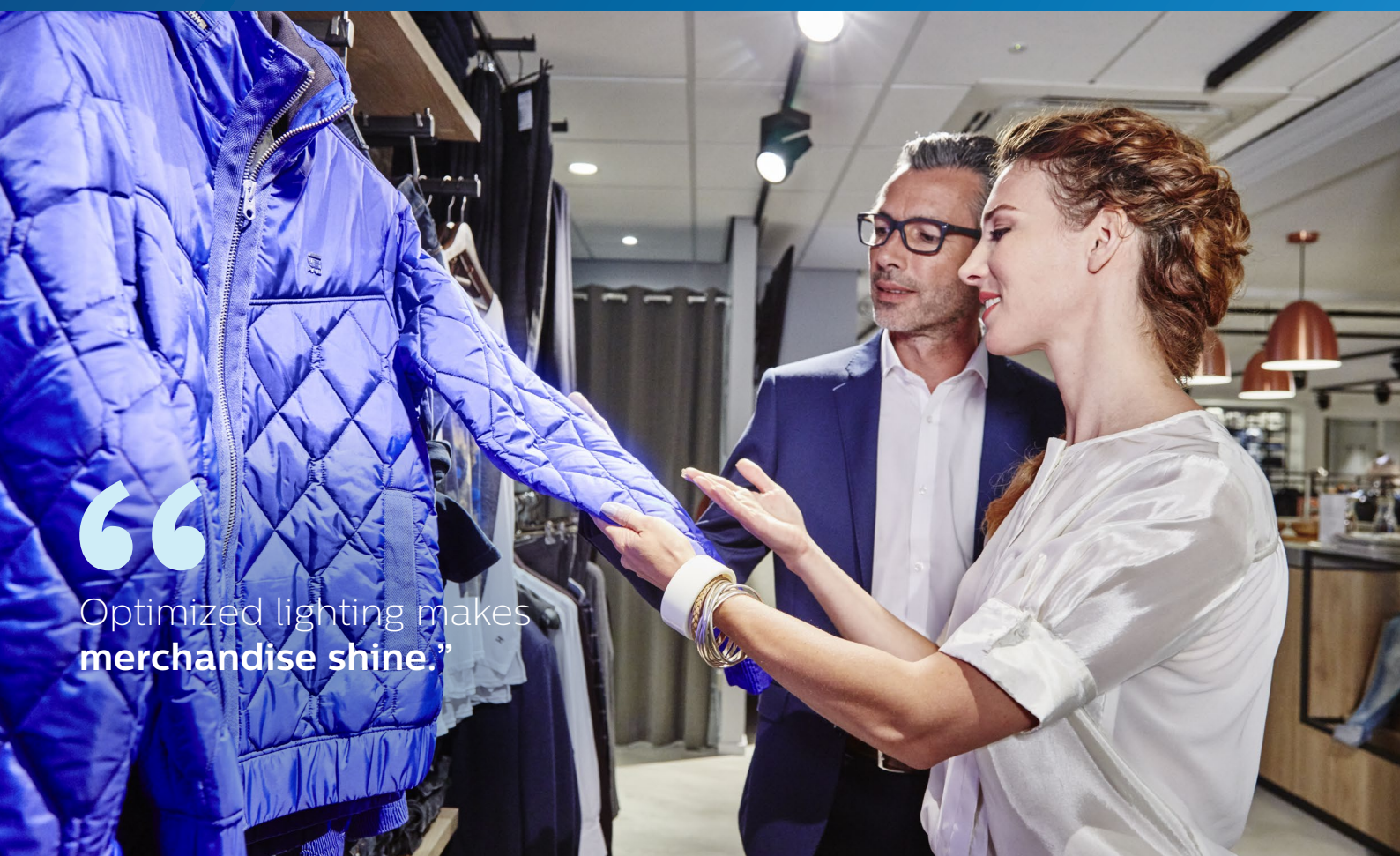
Extended Tc of up to 95°C possible

5 year warranty

* Fortimo SLM C 840 1204 L09 1619 G7 - 700 mA - 2960 lm - Tc=75 °C

“

Optimized lighting makes
merchandise shine.”



Quality that shines

We know that the quality of your merchandise has a direct effect on sales. When you enhance the quality of the products on display, it boosts your reputation and attracts more sales.

With this in mind, we are now placing even greater emphasis on the SLM gen 7 HD modules. There are six areas in which this is most evident:



Quality lighting

Enhancing spaces, products and well-being



Quality assurance

Reliable, thoroughly-tested components



Quality innovation

World-leading connected lighting



Quality people

Guidance and inspiration from our industry experts



Quality support

Technical and operational backup, on and off-line



Quality leadership

Future-proof, standards-based solutions

Our ongoing focus on quality will enable you to offer high-value, reliable solutions. Together we can make sure your customers always have the right LED systems.





Fashion Retail

Fortimo LED SLM gen 7 HD



As energy costs are high on the retail agenda, our aim is to develop the most efficient light sources that offer good quality of light. This portfolio includes several propositions including 2700, 3000, 3500, and 4000 K with a color rendering index (CRI) of >70, >80 and >90.

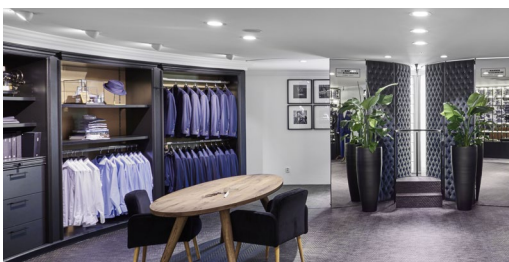
Specifications

2700, 3000, 3500, 4000, 5000 and 5700 K on BBL

CRI 70, 80 or 90

Up to 115 lm/W (1204 L09 840 - Tc=75 °C)

Fortimo LED SLM gen 7 HD premium white



Excellent light quality with the perfect total cost of ownership; that's the ultimate combination that fashion retailers are looking for. Premium white achieves exactly the right balance with high rendering of colors and beautifully whites. It's a must-have light source for track spots in fashion stores.

Specifications

3000, 3500 and 4000 K below BBL

CRI 80 or 90

110 lm/W (1204 L09 830PW - Tc=75 °C)

Premium white effect

Fortimo LED SLM gen 7 HD premium color



Premium color offers a fascinating new light spectrum that is optimized to enhance merchandise with a rich, saturated palette that brings out the best in colors, whites and blacks. It engages customers which are attracted to the vibrant products on display. Now also available in the Fortimo LED SLM HD portfolio.

Specifications

3000K below BBL

CRI 90

91 lm/W (1204 930 PW - Tc=75°C)

Bright colors, perfects whites, crisp blacks

Explore more

www.lighting.philips.co.uk/premiumwhite

Your vision, our modules

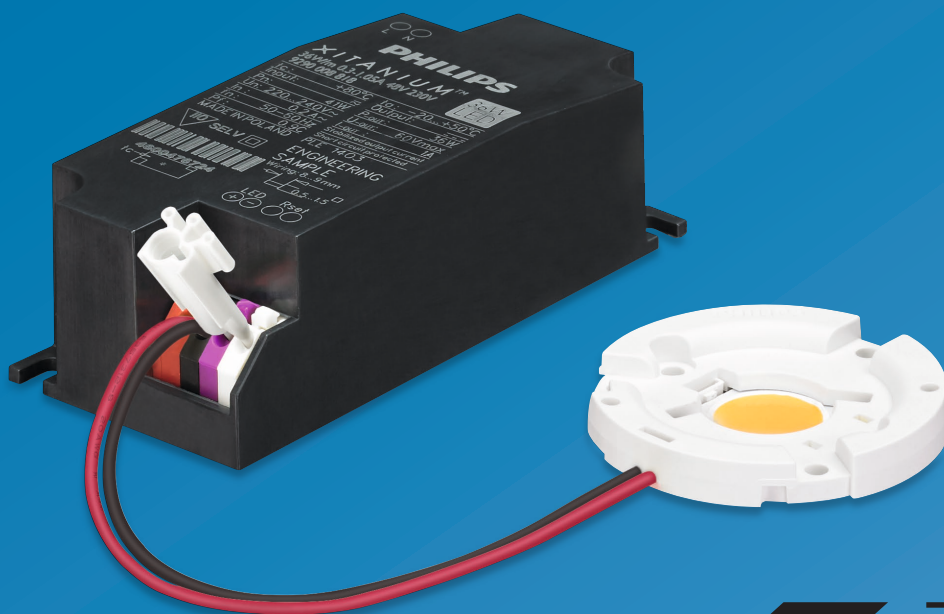
High quality, easy to work with and future-proofed. That's the Fortimo LED SLM modules.

A smart system

The Fortimo LED SLM system is backward compatible and easy to design-in. It also has a long and proven lifetime backed up by the Philips five-year system warranty.

The SLM modules promise flexible lumen output settings, consistent light distribution, and a standardized optical, mechanical, electrical and thermal interface. The module design is Zhaga-compliant and is backwards-compatible with previous SLM generation CoB's, holders and drivers.*

* Zhaga-compliant and is backwards-compatible with previous SLM generation CoB's, holders and drivers. Measurements on the SLM 3000 lm L15 module show compliance to Zhaga book 3 version 1.2



Zhaga

5 year
system
warranty

Spot light essentials

The Fortimo LED SLM is designed to work with our wide range of Xitanium LED drivers. This smart system approach includes the following spot light essentials:

- Xitanium mini drivers to minimize luminaire designs
- Xitanium window drivers with SimpleSet technology for maximum flexibility
- Xitanium Single Current drivers for plug&play solutions
- DALI dimming for scene setting and additional energy savings
- independent driver with mains loop through, for easy installation with a remote driver
- DC input is enabled to ensure compatibility with a central emergency system.

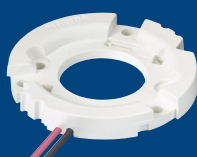
Easy design-in and approbation

Fortimo LED SLM systems are designed to meet the challenges faced by luminaire manufacturers:

- easy design-in possibilities with a high Tc point of 95 °C for further miniaturization
- ENEC, CE, REACH and RoHS-certified for quick and easy luminaire approbation
- full set of complementary thermal and optical partner components available for quick luminaire design.

Maximum flexibility

The modules come with three different holder options. These must be ordered separately:



Standard holder

with two fixed, pre-molded connection wires (60 cm, pre-tinned)



Down light holder

with two fixed, pre-molded connection wires (60 cm, tin-dipped) with an extra sleeve to accommodate strain relief



ZP holder

Original Fortimo shaped holder (Zhaga compliant) with poke-in connectors for easy assembly of pre-wired luminaires



Poke-in holder

without fixed wires, but with two push-in connection points allowing users to mount their own wires.



35mm holder

The smallest poke-in holder which is compatible with the 1202 modules.

The Easy Design-in Tool

Create your ideal configuration in minutes. Design the optimal LED system in the fastest, most simple way.

The Easy Design-in Tool is a powerful, time-saving way to speed up the work of those who design or define LED systems. It's a true solution composer and is ideal for all those involved in delivering added-value LED solutions right through the supply chain.

Check out our tool online!

Visit philips.com/easydesignintool



Product and ordering information

Fortimo SLM gen 7 HD



Product name	Order Code
LES size: 6.5mm - typical lm ouput: 1000lm	EOC
Fortimo SLM C 827 1202 L06 1215 G7	871869684451900
Fortimo SLM C 830 1202 L06 1215 G7	871869684454000
Fortimo SLM C 835 1202 L06 1215 G7	871869684457100
Fortimo SLM C 840 1202 L06 1215 G7	871869684462500
Fortimo SLM C 927 1202 L06 1215 G7	871869684465600
Fortimo SLM C 930 1202 L06 1215 G7	871869684470000

Product name	Order Code
LES size: 9mm - typical lm ouput: 2000lm	EOC
Fortimo SLM C 730 1204 L09 1619 G7	871869675112100
Fortimo SLM C 740 1204 L09 1619 G7	871869675115200
Fortimo SLM C 827 1204 L09 1619 G7	871869675118300
Fortimo SLM C 830 1204 L09 1619 G7	871869675121300
Fortimo SLM C 835 1204 L09 1619 G7	871869675124400
Fortimo SLM C 840 1204 L09 1619 G7	871869675131200
Fortimo SLM C 850 1204 L09 1619 G7	871869675138100
Fortimo SLM C 857 1204 L09 1619 G7	871869675145900
Fortimo SLM C 927 1204 L09 1619 G7	871869675148000
Fortimo SLM C 930 1204 L09 1619 G7	871869675151000

Fortimo SLM gen 7 HD - premium white



Product name	Order Code
LES size: 6.5mm - typical lm ouput: 1000lm	EOC
Fortimo SLM C 830 PW 1202 L06 1215 G7	871869684479300
Fortimo SLM C 930 PW 1202 L06 1215 G7	871869684484700
Fortimo SLM C 935 PW 1202 L06 1215 G7	871869684491500
Fortimo SLM C 940 PW 1202 L06 1215 G7	871869684510300

Product name	Order Code
LES size: 9mm - Typical lm output: 2000lm	EOC
Fortimo SLM C 830 PW 1204 L09 1619 G7	871869675154100
Fortimo SLM C 930 PW 1204 L09 1619 G7	871869675157200
Fortimo SLM C 935 PW 1204 L09 1619 G7	871869675160200
Fortimo SLM C 940 PW 1204 L09 1619 G7	871869675163300

Fortimo SLM gen 7 HD - premium color



Product name	Order Code
LES size: 6.5mm - typical lm ouput: 1000lm	EOC
Fortimo SLM C 930 PC 1202 L06 1215 G7	871869680688300

Product name	Order Code
LES size: 9mm - typical lm ouput: 2000lm	EOC
Fortimo SLM C 930 PC 1204 L09 1619 G7	8718696 80691300





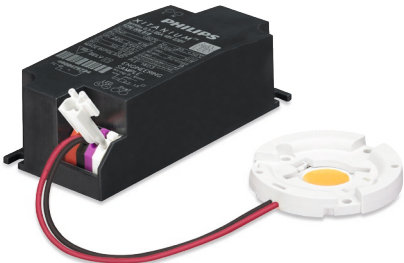
Fortimo SLM gen 6 - Holders

Product name	Order Code
LES size 9mm	EOC
Standard holder	
Fortimo SLM H 1619 G1	871869652205900
Downlight holder	
Fortimo SLM H DL 1619 G1	871869652208000
Zhaga Poke-in holder	
Fortimo SLM H ZP 1619 G1	694793912723800
Poke-in holder	
Fortimo SLM H PI 1619 G1	871869652211000
LES size 6.5mm	
35mm Poke-in holder	
Fortimo SLM H PI 1215 35 G1	694793913272000



Driver compatibility

Module type	Xitanium LED driver window*	Xitanium Single Current LED driver*
1202, L06	Xitanium 20W 0.15-0.5A 48V	Xitanium 16W/m 0.35A 46V SC 230V
	Xitanium 36W 0.3-1A 48V	Xitanium 23W/m 0.5A 46V SC 230V
1204, L09	Xitanium 20W 0.15-0.5A 48V	Xitanium 16W/m 0.35A 46V SC 230V
	Xitanium 36W 0.3-1A 48V	Xitanium 23W/m 0.5A 46V SC 230V
	Xitanium 50W 0.9-1.4A 48V	Xitanium 32W/m 0.7A 46V SC 230V
	Xitanium 50W 0.7-1.5A 48V	



* Check the Xitanium indoor point driver portfolio or [EasyDesignInTool.com](https://www.philips.com/easydesignintool) for all available drivers with the operating point you need.

For more information see datasheet

Fortimo and Xitanium – partners in performance

Luminaire performance is determined by the sum of its component parts, each carefully designed or selected to meet specific application requirements. In addition to the Fortimo LED lighting modules featured here, we also offer an extensive range of Xitanium LED drivers. Pair components from these complementary families and you'll benefit from design-in simplicity, flexibility, compatibility and exceptionally long life including 5y system warranty. You'll also enjoy the convenience of dealing with just one knowledgeable supplier of these vital luminaire components.

