

PHILIPS Day-Brite CFI

Recessed

ClearAppeal 2x2

with tunable white
technology
3000/3400/3700 lm



Project: _____
Location: _____
Cat.No: _____
Type: _____
Lamps: _____ Qty: _____
Notes: _____

Philips Day-Brite / Philips CFI ClearAppeal LED recessed architectural provides excellent visual comfort. Its modern architectural styling complements any space. Tunable white technology allows color temperature flexibility between 2700K and 6500K CCT.

Ordering guide

Example: 2CAG37L8TW-2-DS-UNV-DTW

Width	Family	Ceiling Type	Lumens	Color	Length	Center Diffuser	Voltage	Driver	Options
2	CA			8TW	2	DS	UNV	DTW	
2 2'	CA ClearAppeal	G Grid F Flange	30L 3000 nominal delivered lumens 34L 3400 nominal delivered lumens 37L 3700 nominal delivered lumens	8TW 80 CRI, 2700K thru 6500K white light tuning	2 2'	DS Diffuse (smooth)	UNV Universal Voltage, 120-277 volt	DTW Dual channel tunable white	EMLED Internal emergency, 1100lm nominal, 6500K color circuit only F1/D 3/8" twin flex, 3 wire 18 gauge 6' for dimmable luminaires F2/7W 3/8" single flex, 7 wire 18 gauge 6' for dimmable luminaires GLR Fusing, fast blow

Accessories (order separately)

- **FMA22** – 2'x2' "F" mounting frame for NEMA "F" mounting



2CA ClearAppeal LED recessed 2x2

with tunable white technology, 3000/3400/3700 lumens

Application

- Modern architectural styling to complement any space.
- Smooth brightness across the face of the luminaire prevents glare and provides excellent visual comfort.
- Directs a controlled amount of light to higher angles to eliminate "cave effect" without creating glare.
- Ideal for modern offices, schools and retail environments.
- Excellent luminaire efficacy provides significant energy savings.
- High CRI source provides excellent color rendering.
- Grid and Flange models available.

Construction/Finish

- One piece die-formed embossed steel housing provides added rigidity, resists damage during shipment/handling.
- Captive hinged door frame assembly for maintenance accessibility.
- T-bar grid clips are built into luminaire ends for quick and easy installation, no extra parts required.
- Suitable for end-to-end mounting.
- End K.O.s for thru wiring or conduit entry in shallow plenums.

Electrical

- Must order compatible Philips Lighting control system.
- Driver and LED boards are easily accessible from below. LED boards are individually replaceable if required.

- Five-year luminaire limited warranty including LED boards and driver.
- High efficiency LEDs have 60,000 hour L70 rated life (defined as 70% lumen maintenance.)
- cETLus listed to UL standards, suitable for damp locations.

Enclosure

- Single piece thermo formed acrylic lens with smooth center diffuser (DS).

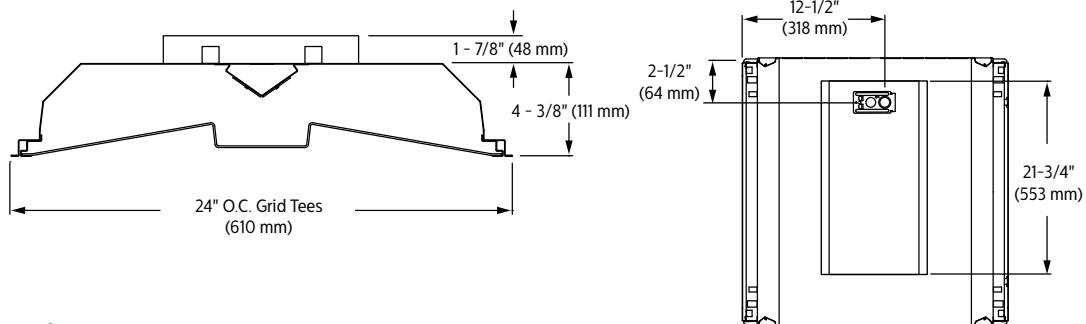
General Notes

- All options factory installed.
- All accessories are field installed.
- Many luminaire components, such as reflectors, refractors, lenses, sockets, lampholders, and LEDs are made from various types of plastics which can be adversely affected by airborne contaminants. If sulfur based chemicals, petroleum based products, cleaning solutions, or other contaminants are expected in the intended area of use, consult factory for compatibility.

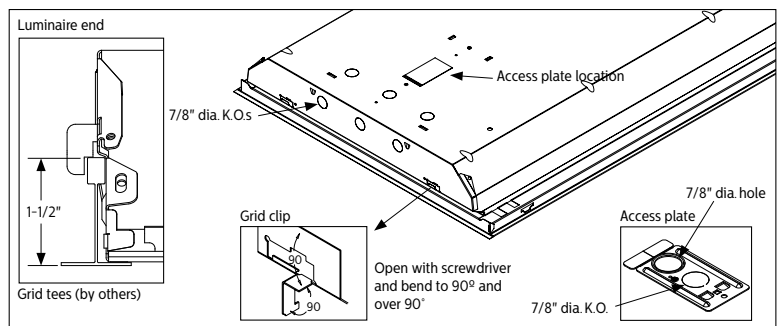
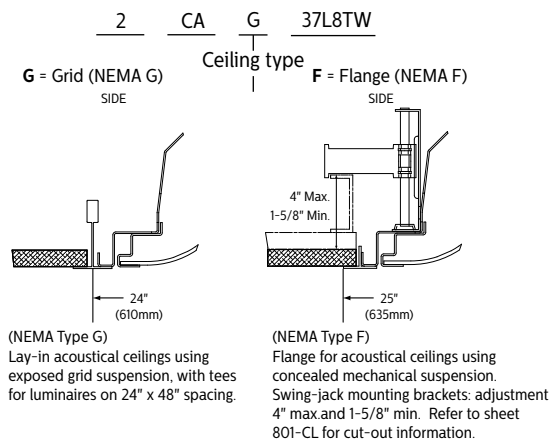
Controls

- Luminaires are not sold individually and are only compatible with load controllers, sensors, user interfaces and front end software from Philips. Philips controls platform allows for more flexibility with customized lighting scenes and behaviors as well as scalability of the tunable white solution into a more extensive lighting network management system. To learn more about the Philips controls solution please visit our tunable white page or <http://www.lightingproducts.philips.com/our-brands/philips-controls/dynalite.html>

Dimensions



Ceiling configuration



2CA ClearAppeal LED recessed 2x2

with tunable white technology, 3000/3400/3700 lumens

Electrical Specifications

Input Voltage	120V			277V		
Nominal CCT	2700K			2700K		
Nominal Lumens	3000lm	3400lm	3700lm	3000lm	3400lm	3700lm
Commissioned State						
Power (W)	36.5	44.3	50.0	36.3	44.0	49.5
Current (A)	0.31	0.38	0.42	0.16	0.18	0.2
Power Factor	0.98	0.99	0.99	0.85	0.88	0.90
THD (%)	15	14	12	18	17	16
Off State Power (W)	0.6	0.6	0.6	0.9	0.9	0.9
Non-Commissioned State						
Power (W)	67.0	83.0	92.0	66.0	82.0	91.0
Current (A)	0.56	0.70	0.78	0.26	0.32	0.35

Photometry

2x2 ClearAppeal LED recessed with tunable white, 3000 nominal delivered lumens, 2700K CCT

LER – 84

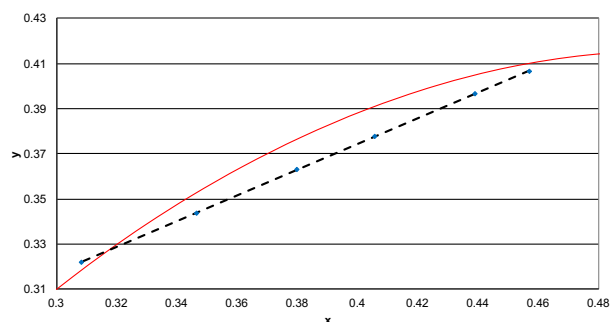
Catalog No.	2CAG30L8TW-2-DS-UNV-DTW	Candlepower				Light Distribution			Average Luminance			
		Angle	End	45	Cross	Degrees	Lumens	% Luminaire	Angle	End	45°	Cross
Test No.	36150	0	1047	1047	1047	0-30	811	27.1	45	2957	3165	3335
S/MH	1.3	5	1038	1044	1048	0-40	1321	44.1	55	2754	3042	3289
Lamp Type	LED	15	995	1009	1019	0-60	2319	77.5	65	2489	2932	3309
Lumens	2992	25	905	929	947	0-90	2991	100.0	75	2077	2892	3422
Input Watts	36	35	780	817	844	0-180	2992	100.0	85	1455	2326	2390
CCT	2700K	45	636	681	718	Coefficients of Utilization						
Comparative yearly lighting energy cost per 1000 lumens – \$2.86 based on 3000 hrs. and \$.08 pwr KWH. The photometric results were obtained in the Philips Day-Brite laboratory which is NVLAP accredited by the National Institute of Standards and Technology. Photometric values based on test performed in compliance with LM-79.		55	481	531	574							
		65	320	377	426	EFFECTIVE FLOOR CAVITY REFLECTANCE 20 PER (pfc=0.20)						
		75	164	228	270	pcc	80			70		
		85	39	62	63	pw	70	50	30	70	50	30
		RCR										
		0			1			2			50	
		118			108			97			111	
		118			103			90			96	
		118			98			82			93	
		115			82			70			83	
		115			70			60			73	
		115			60			53			66	
		115			53			46			58	
		115			46			41			53	
		115			41			38			47	
		115			38			34			44	
		115			34			30			40	
		115			30			30			38	

2CA ClearAppeal LED recessed 2x2

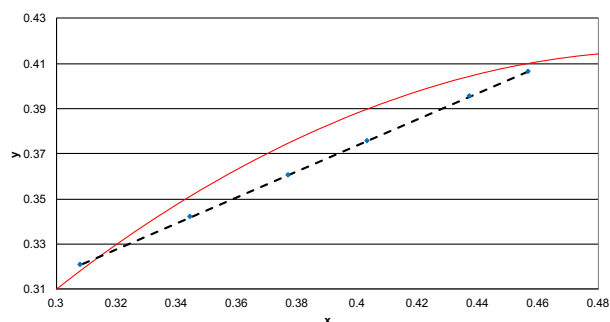
with tunable white technology, 3000/3400/3700 lumens

Color information

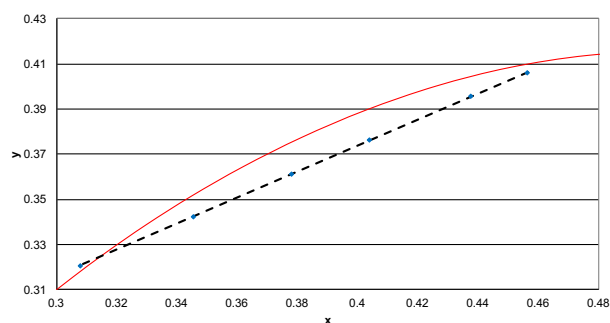
2x2 ClearAppeal 3000lm	2700K	3000K	3500K	4000K	5000K	6500K
Flux	2983	2987	2951	2979	2866	2812
Power	35.8	37.2	34.9	34.1	32.1	29.3
Efficacy	83.3	80.3	84.5	87.4	89.4	96.1
CCT	2712	2904	3379	3910	4921	6814
CRI	83	84	87	88	88	85
R9	17	23	34	40	41	24
x	0.4568	0.4390	0.4058	0.3797	0.3464	0.3084
y	0.4067	0.3966	0.3777	0.3628	0.3437	0.3220
Duv	-0.0012	-0.0032	-0.0059	-0.0065	-0.0045	0.0018



2x2 ClearAppeal 3400lm	2700K	3000K	3500K	4000K	5000K	6500K
Flux	3567	3603	3622	3699	3611	3582
Power	43.5	44.8	42.3	41.5	39.8	37.5
Efficacy	82.1	80.4	85.6	89.1	90.7	95.4
CCT	2715	2923	3425	3976	4993	6854
CRI	83	84	87	88	88	85
R9	17	23	34	40	40	25
x	0.4565	0.4373	0.4030	0.3770	0.3444	0.3079
y	0.4064	0.3955	0.3759	0.3609	0.3421	0.3209
Duv	-0.0013	-0.0035	-0.0061	-0.0066	-0.0046	0.0015



2x2 ClearAppeal 3700lm	2700K	3000K	3500K	4000K	5000K	6500K
Flux	3949	3992	4000	4066	3937	3866
Power	49.0	49.9	46.8	45.8	43.3	40.8
Efficacy	80.7	80.1	85.6	88.9	91.0	94.9
CCT	2716	2919	3410	3949	4959	6868
CRI	82	84	87	88	88	85
R9	17	23	34	40	41	25
x	0.4563	0.4375	0.4038	0.3780	0.3453	0.3077
y	0.4062	0.3955	0.3762	0.3613	0.3423	0.3205
Duv	-0.0013	-0.0035	-0.0062	-0.0067	-0.0048	0.0014



© 2016 Philips Lighting Holding B.V. All rights reserved.
Philips reserves the right to make changes in specifications and/or to discontinue any product at any time without notice or obligation and will not be liable for any consequences resulting from the use of this publication.
philips.com/luminaires



Philips Lighting North America Corporation
200 Franklin Square Drive, Somerset, NJ 08873
Tel. 855-486-2216

Philips Lighting Canada Ltd.
281 Hillmount Rd, Markham, ON, Canada L6C 2S3
Tel. 800-668-9008