

Day-Brite

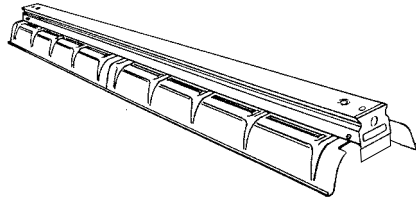
CFI

by  Signify

Industrial

1FD general purpose

T8 or T12 high output



Project: _____
 Location: _____
 Cat.No: _____
 Type: _____
 Lamps: _____ Qty: _____
 Notes: _____

Day-Brite / CFI general purpose industrial is a luminaire providing 10% uplight and 13° crosswise shielding.

Ordering guide

Example: 1FD286HO-PP-UNV-1/2-EB

Family	No. of Lamps per Cross Section	Lamp Type	Reflector Options	Voltage	Options
1FD	2	—	—	—	
1FD Industrial (10% uplight)	(not included) 2	44HO 44W T8 380 mA (48") 48HO 60W T12 800 mA (48") 86HO 86W T8 380 mA (96") 96HO 110W T12 800 mA (96")	PP Painted Polyester PPS Painted Polyester solid top	UNV Universal voltage 120/277V 120 120V 277 277V 347 347V	1/2 One 2-lamp ballast EB Electronic ballast, <20% THD E7 B60 emerg. ballast, 600-700 lumens, 120/277V E5 B50 emerg. ballast, U.S. or Canada market, 1100-1400 lumens, UNV E5CAN B50-CAN emerg. ballast, Canada market, 1100-1400 lumens, 120/347V E5ST B50ST emerg. ballast w/self test, 1100-1400 lumens, UNV GLR Fusing, fast blow Power Connect modular wiring available, see sheet 1604-OA for details

Accessories (order separately)

- **CS-400** Rigid Canopy
- **CS-500** 42" Top Swivel Canopy
- **CS-12** 12" Stem
- **CS-18** 18" Stem
- **CS-24** 24" Stem
- **CS-30** 30" Stem
- **CS-36** 36" Stem
- **CS-48** 48" Stem
- **FL-111** Sliding hanger, conduit/stem/screw
- **FL-117** Hook, chain (requires FL-111)
- **FL-119** Hook, messenger cable (requires FL-111)
- **FL-123** 5' chain (w/S-hooks) set
- **FL-173** 4' wire guard (use 2 for 8')
- **FL-3** Channel coupling
- **N-3381** Universal joint aligner, octagonal box, 3/4" I.P.S.



1FD General purpose industrial

T8 or T12 high output

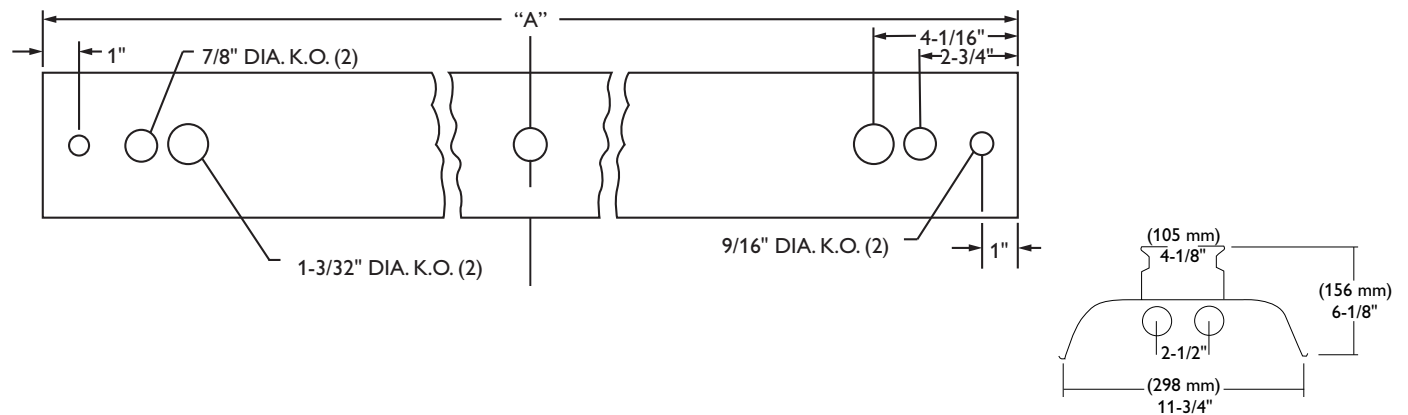
Construction/Finish

- Housing and reflector are multi-stage phosphate treated for maximum corrosion resistance and finish coat is high reflectance baked white enamel.
- Multiple knockouts for convenient installation.
- Heavy duty channel of code gauge die formed steel,
- Reflectors have stiffening ribs for rigidity and provide 13° crosswise shielding.
- Twist-lock reflector thumb screws.
- Continuous rows utilize a simple concealed coupling, FL-3 (optional).
- Apertured reflector (11-13% uplight) standard.
- Solid top reflector (no uplight) optional.

Electrical

- cULus listed for damp locations.
- Spring-loaded lampholders provide positive lamp engagement and electrical contact.
- **IMPORTANT! High Output Fixtures must be suspended with a minimum 1-1/2" clearance to ceiling.**
- Day-Brite's standard fixtures for high output T8 (380 mA) and T12 (800 mA) include ballasts rated for -20° F starting temperature.

Dimensions



1FD General purpose industrial

T8 or T12 high output

Photometry

1FD 8' 2 Lamp F96 HO ES

Efficiency – 90.4%

LER – 68

TER – 41

		Candlepower				Light Distribution				Average Luminance				
		Angle	End	45	Cross	Degrees	Lumens	% Lamp	% Luminaire	Angle	End	45'	Cross	
Catalog No.	1FD296HO-PP-1/2-EB	0	3896	3896	3896	0-30	4957	5409	5848	45	3786	4076	4511	
Test No.	ITL42348D1	5	3893	3870	3924	55	4892	5721	5606	55	3725	4419	4284	
S/MH	1.4	15	3785	3773	3847	65	4656	5400	5317	65	3550	4071	4007	
Lamp Type	F96 HO ES	25	3544	3595	3723	75	4170	5384	4359	75	3115	4080	2916	
Lumens/Lamp	8000	35	3187	3350	3490	85	3325	2985	2867	85	2290	2024	1832	
Ballast Factor	.84	45	2722	2970	3211	Coefficients of Utilization								
Input Watts	178	55	2179	2548	2497	EFFECTIVE FLOOR CAVITY REFLECTANCE 20 PER (pfc=0.20)								
Comparative yearly lighting energy cost per 1000 lumens – \$3.53 based on 3000 hrs. and \$.08 pwr KWH. The photometric results were obtained in the Day-Brite laboratory which is NVLAP accredited by the National Institute of Standards and Technology.		65	1528	1772	1745	pcc	80			70			50	
		75	838	1082	876	pw	70	50	30	70	50	30	50	30
		85	225	202	194	RCR								
		95	26	61	70	0	105	105	105	101	101	101	93	93
		105	165	83	148	1	94	91	86	92	88	83	81	79
		115	343	73	68	2	85	79	71	82	76	69	70	66
		125	524	183	101	3	78	68	60	75	66	59	61	56
		135	691	321	225	4	71	60	52	68	58	51	55	48
		145	829	452	374	5	66	54	46	63	52	44	48	41
		155	940	574	515	6	59	47	40	57	46	39	44	36
165	1015	881	752	7	56	44	35	54	41	34	40	33		
175	1049	1019	1020	8	52	40	32	50	38	30	35	29		
					9	47	35	28	46	34	28	33	27	
					10	45	33	26	44	32	26	30	25	



Some luminaires use fluorescent or high intensity discharge (HID) lamps that contain small amounts of mercury. Such lamps are labeled, "Contain Mercury" and/or the symbol "HG". Lamps that contain mercury must be disposed of in accordance with local requirements. Information regarding lamp recycling and disposal can be found at www.lamprecycle.org

