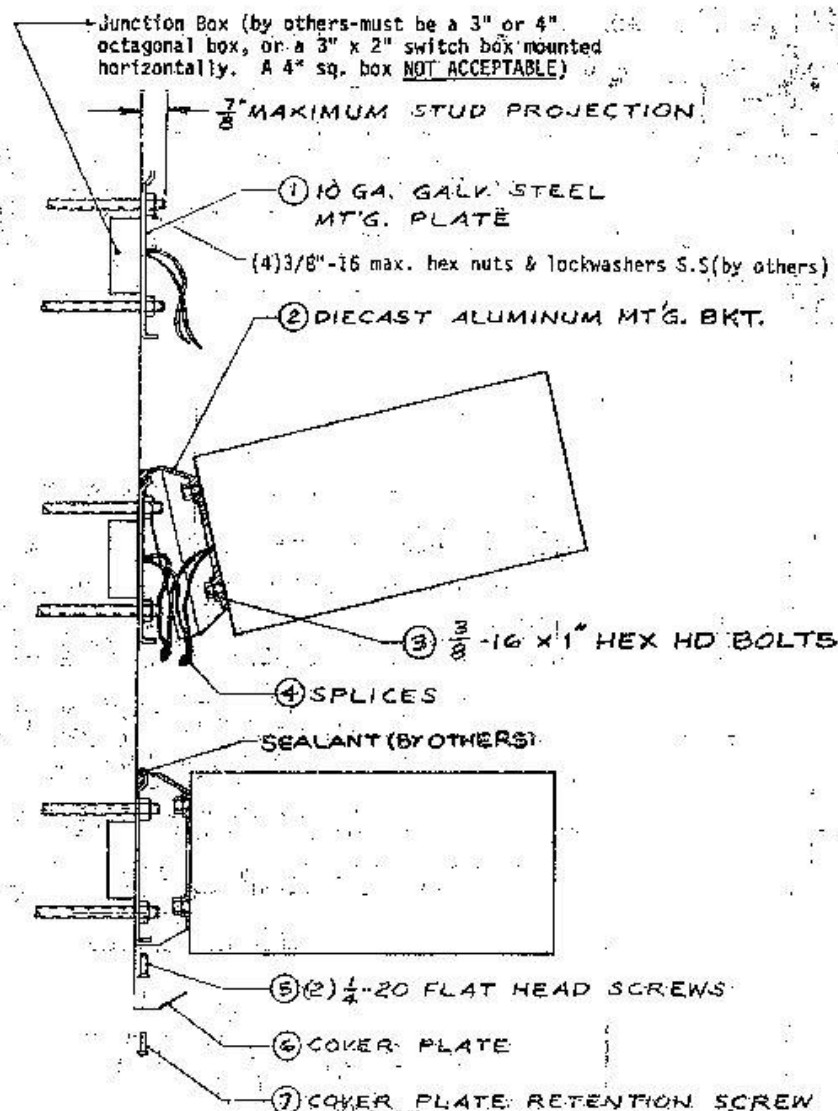


INSTALLATION INSTRUCTIONS

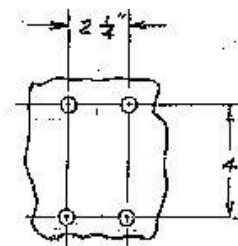
FORM 10 SQUARE WE,WH

Signify North America Corporation
200 Franklin Square Drive
Somerset N.J. 08873, USA

Signify Canada Ltd./Signify Canada Ltée.
281 Hillmount Road,
Markham, ON, Canada L6C 2S3



MT'G. STUD
PATTERN



INSTALLATION PROCEDURES

1. Position gasket and die cast aluminum mounting bracket (2) up against luminaire housing with (2) 3/8-16 hex head bolts, flatwashers and lockwashers (3).
2. Slip supply leads through mounting plate (1) and attach plate to column using (4) 3/8-16 hex nuts and lockwashers (by others). Be certain plate is level.
3. Hook die cast aluminum mounting bracket (2) to top of mounting plate (1) and route supply and luminaire leads (4) through bottom of bracket. Lower housing into operating position and secure by installing (2) 1/2-20 flat head screws (5). Splice supply leads to luminaire leads (4) and position up inside mounting bracket. Be certain to splice ground leads.
4. Apply bead of suitable weatherproof sealant along horizontal top & vertical left & right edges of cast mounting plate where it contacts the wall to prevent water entry.
5. Install cover plate (6) and secure in position with #10-32 pan head screw (7).
6. Open lens door by sliding door latch tabs toward each other and hinging door to open position.
7. Install proper lamp in luminaire. (Type is noted on reflector assembly.)
8. Replace lens door assembly.
9. Energize system.

CAUTION

USE CLEAR LAMP ONLY
Clear lamp required for optimum photometric performance.