

# PHILIPS

Outdoor 100W  
power supply

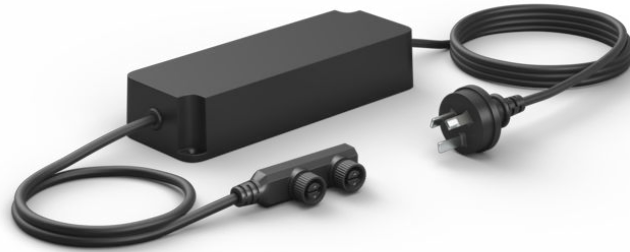
Hue

Extension cable

Power up to 100W

Black

17488/30/AN



## Easy smart lighting

Fill your entire outdoor space with smart light using this outdoor power supply, which allows you to add up to 100W of different lights. Connect two cables — each measuring up to 30 meters — to any low-voltage outdoor Philips Hue light on each connector, adding each fixture's wattage to reach the maximum 100W threshold of the power supply.

**Specially designed for your outdoors**

- Easy to install and extend

# Highlights

## Easy to install and extend



Brighten up dark paths, create highlights in your landscaping, or create a unique ambiance on the patio. You can do it yourself, using Hue spots or bollards. The products are based on low voltage, safe to use and easy to install. No more complexity to get lighting outdoors: go create and extend as you like.

# Specifications

## Design and finishing

- Color: black
- Material: synthetics

## Extra feature/accessory incl.

- Fully weatherproof: Yes

## Miscellaneous

- Especially designed for: Garden & Patio
- Type: Power supply

## Product dimensions & weight

- Height: 4.5 cm
- Length: 20 cm
- Net weight: 1.100 kg
- Width: 7.0 cm
- Power Cable length: 1.5 m
- 24V Cable length: 0.6 m

## Service

- Warranty: 2 year(s)

## Technical specifications

- Compatible with Philips Hue dimmable devices: Yes
- Lifetime up to: 25,000 h
- Mains power: Range 220 V – 240 V, 50–60 Hz
- IP code: IP67
- Class of protection: II – double insulated

## Packaging dimensions & weight

- EAN/UPC – product: 8718696175972
- Net weight: 1.100 kg
- Gross weight: 1.245 kg
- Height: 134.000 mm
- Length: 82.000 mm
- Width: 236.000 mm
- Material number (12NC): 915005923301



Issue date: 2023-11-07  
Version: 0.236

© 2023 Signify Holding. All rights reserved. Signify does not give any representation or warranty as to the accuracy or completeness of the information included herein and shall not be liable for any action in reliance thereon. The information presented in this document is not intended as any commercial offer and does not form part of any quotation or contract, unless otherwise agreed by Signify. Philips and the Philips Shield Emblem are registered trademarks of Koninklijke Philips N.V.

[www.lighting.philips.com](http://www.lighting.philips.com)