

# Day-Brite CFI

by @ignify

## Special Application

CRFDD series recessed flange

Cleanroom  
T5, T5HO, or T8



Project: \_\_\_\_\_  
Location: \_\_\_\_\_  
Cat.No: \_\_\_\_\_  
Type: \_\_\_\_\_  
Lamps: \_\_\_\_\_ Qty: \_\_\_\_\_  
Notes: \_\_\_\_\_

The Day-Brite / CFI CRFDD series recessed flange troffer is a cleanroom luminaire with drop down door designed to meet the criteria for critical environments in recessed mount applications.

### Ordering guide

Example: CRFDD14-232-UNV-A-1/2-EB

Family	No. of Lamps	Lamp Type <sup>1</sup>	Voltage	Lens Type	No. of Ballasts	Ballast Type	Options
CRFDD14 1x4 CRFDD22 2x2 CRFDD24 2x4	2 Two lamps 3 Three lamps 4 Four lamps (2x2 & 2x4) 6 Six lamps (2x4)	14 14WT5 (24") 17 17WT8 (24") 24HO 24WT5HO (24") 28 28WT5 (48") 32 32WT8 (48") 54HO 54WT5HO (48")	UNV Universal voltage, 120-277V 120 120V 277 277V 347 347V	A .125 Prismatic Acrylic B .125 DR Prismatic Acrylic C .140 DR Prismatic Acrylic D .187 DR Prismatic Acrylic E .125 Prismatic Polycarbonate F .187 Prismatic Polycarbonate G .156 Prismatic Tempered Glass H .156 Prismatic Polycarbonate UV .007 UV Absorbing Overlay	1/2 One 2 lamp ballast 1/3 One 3 lamp ballast 1/4 One 4 lamp ballast 2/1 Two 1 lamp ballasts 2/2 Two 2 lamp ballasts 2/3 Two 3 lamp ballasts 1/21 2 lamp & 1 lamp ballasts 1/42 4 lamp & 2 lamp ballasts	EB Electronic ballast, <10% THD, T8 instant start, T5 rapid start EB1OR Electronic ballast, T8 rapid start, <10% THD SB Specified ballast	E7 B60 emerg. ballast, T8, 600-700 lumens, 120/277V <sup>2,3</sup> E5 B50 emerg. ballast, U.S. or Canada market, T8, 1100-1400 lumens, UNV <sup>2,3</sup> E7LP LP550 emerg. ballast T5/ T5HO, 430-700 lumens, 120/277V <sup>2,3</sup> E6LP LP600 emerg. ballast U.S. or Canada market, T5/T5HO, 750-1325 lumens, 120/277V <sup>2,3</sup> SS Stainless steel housing, brushed stainless steel door SSD CRS housing, brushed stainless steel door ALUM .050" painted aluminum housing and door ADP CRS housing, .050" painted aluminum door GLR Fusing, fast blow AG Agion™ antimicrobial protection in powder coat paint (white finish only) NLF7 7W PL Night Light <sup>2,3</sup> NLEDS LED nightlight <sup>3</sup> (120V only)

### Accessories (order separately)

- PF-CRFDD14 1x4 Plaster Frame
- PF-CRFDD22 2x2 Plaster Frame
- PF-CRFDD24 2x4 Plaster Frame

### Footnotes

- <sup>1</sup> Lamps supplied by others.
- <sup>2</sup> Specify voltage.
- <sup>3</sup> Limited availability in 2 ft. luminaire. Consult factory.

### General Notes

- Many luminaire components, such as reflectors, refractors, lenses, sockets, lampholders, and LEDs are made from various types of plastics which can be adversely affected by airborne contaminants. If sulfur based chemicals, petroleum based products, cleaning solutions, or other contaminants are expected in the intended area of use, consult factory for compatibility.



# CRFDD Recessed flange troffer

Cleanroom, T5, T5HO, or T8

## Standards

- ETL (US/Canada) Wet Location listed,
- Suitable for Class 100, 1,000, 10,000, 100,000 environments,
- NSF2 Food Zone/Non-Contact and Splash Zone.

## Construction/Finish

- 18-gauge cold rolled steel "hole-free" housing with welded seams. Optional stainless steel or aluminum housing available.
- 18-gauge one-piece cold rolled steel drop down door with safety cables. Optional brushed stainless steel or aluminum door available.
- Captive stainless steel Phillips flat head fasteners are standard.
- Standard baked white polyester powder coat paint finish. Multi-stage pretreatment process. Salt spray 1,000 hours.

## Lens

- Standard .125" prismatic acrylic lens with smooth side exposed to facilitate cleaning. Optional lensing shown below.
- Continuous formed channels for positive lens retention.
- Lens and door sealed with closed cell neoprene sponge door and lens gasketing.

## Electrical

- Standard Class P sound rated A electronic ballasts. Other ballast options available.

## Installation

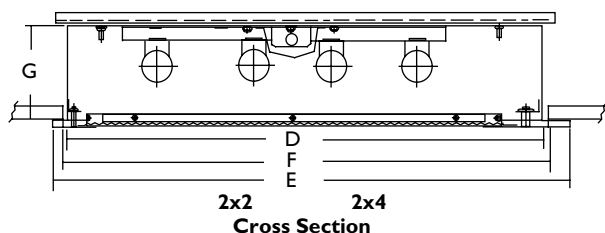
- Cross mounting channels supplied. Support above plenum by others. For more information on channels, see spec sheet VRS-9510.
- Not suitable for grid ceilings.
- Optional plaster frame available. For more information on plaster frames, consult spec sheet VRS-9500.
- Flattened 7/8" knocks in top and ends of housing.

## Option

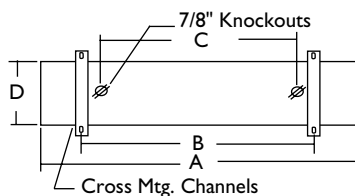
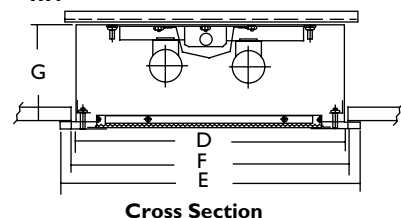
- Agion™ Antimicrobial protection using silver technology inhibits bacterial colonization on metal interior and exterior surfaces. Agion™ antimicrobial FDA recognized and EPA registered, meeting all applicable EPA standards. Only available with standard white finish.

## Dimensions

2x2 2x4



1x4



Size	A	B	C	D	E	F	G
14	48.125"	38"	32"	11.5"	12.5"	12"	4.5"
22	23.813"	21"	16"	23.5"	25"	24"	4.5"
24	48.125"	38"	32"	23.5"	24.5"	24"	4.5"

Hg

Some luminaires use fluorescent or high intensity discharge (HID) lamps that contain small amounts of mercury. Such lamps are labeled, "Contain Mercury" and/or the symbol "Hg". Lamps that contain mercury must be disposed of in accordance with local requirements. Information regarding lamp recycling and disposal can be found at [www.lamprecycle.org](http://www.lamprecycle.org)

**signify**