

HADCO

by Signify

Landscape



**Connect your
landscape
to your lifestyle**



Cutting edge curb appeal

Usher in a new era of outdoor lighting controls with the **Hadco ZoneScape landscape lighting control system**. Up to 8 independent outdoor lighting groups are controlled at the touch of a finger from any mobile device, elevating ordinary lighted landscapes into enticing, high-tech destinations.

ZoneScape's control module easily connects to new and existing outdoor luminaires and low voltage transformers from any manufacturer – no special wires or adapters are needed. The module connects via wireless networks and is managed via a downloadable app on iOS or Android smart phone and tablet device

High tech solution for low voltage lighting

What is controlled?

Up to 300W of total luminaires may be connected per each ZoneScape control module. The luminaires are organized in up to 8 independent, user-defined groups, and using the ZoneScape app, each group can be instantly switched on and off, or programmed to turn on and off according to a flexible and user-defined single daily or weekly schedule.

Is it complicated to install and use?

Install the ZoneScape control module in under 10 minutes without special wires, adapters or tools. Then, use the ZoneScape app's straightforward and user-friendly interface to create and control lighting groups. It's that easy.

What will the neighbors think?

ZoneScape does more than just control outdoor lights – it helps to define an opulent nighttime outdoor destination that is both energy-saving and enviable. Create a high-tech, standout landscape. Create energy-saving lighting schedules for when and where light is needed. Set the neighborhood standard.

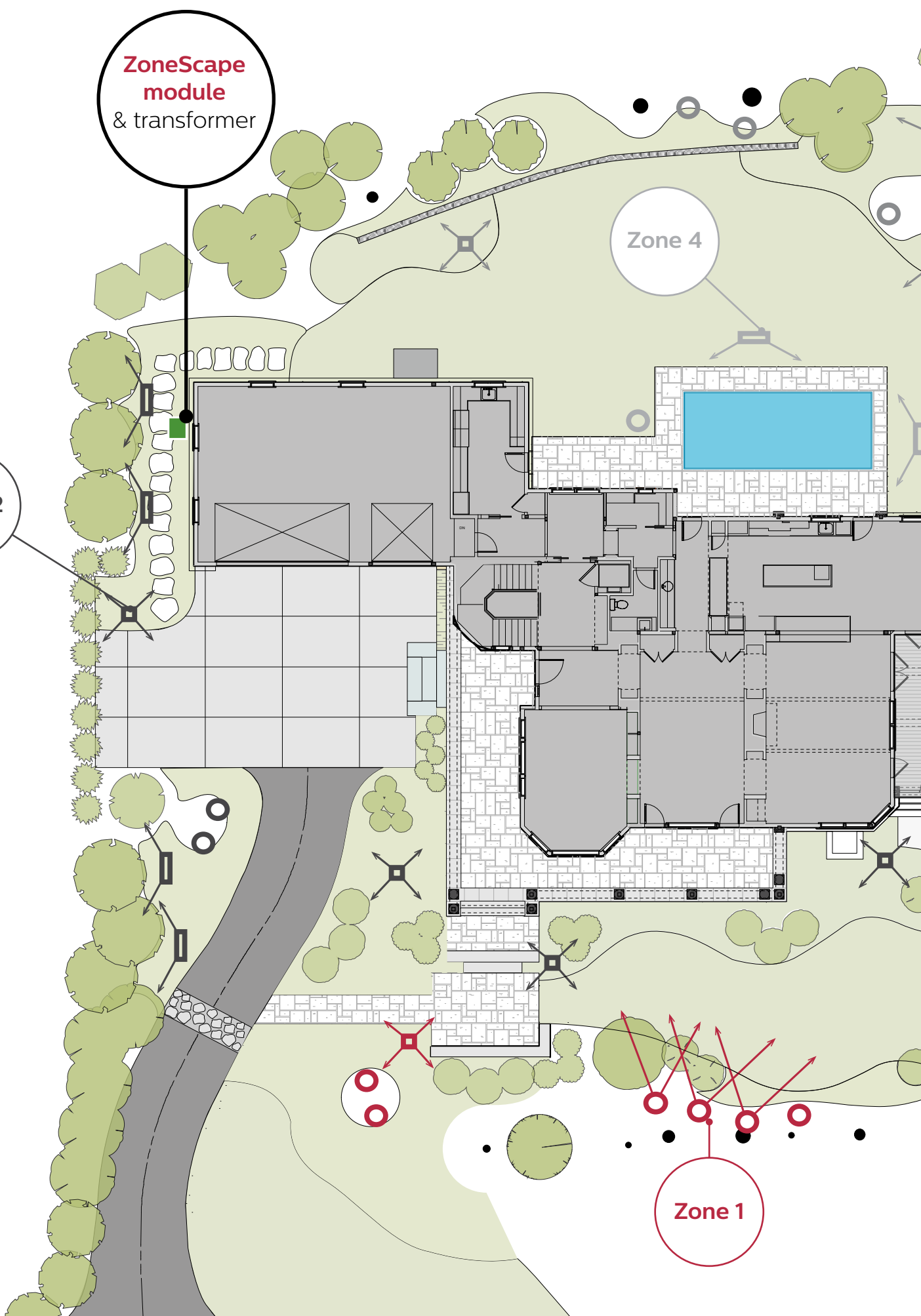


**ZoneScape
module
& transformer**

Zone 2

Zone 4

Zone 1



Connect your lighting to your lifestyle with custom zones

Zone 1: Property entrance

Safely guide drivers after dark, guard against pedestrian falls, and discourage prowlers

Zone 2: Building / house

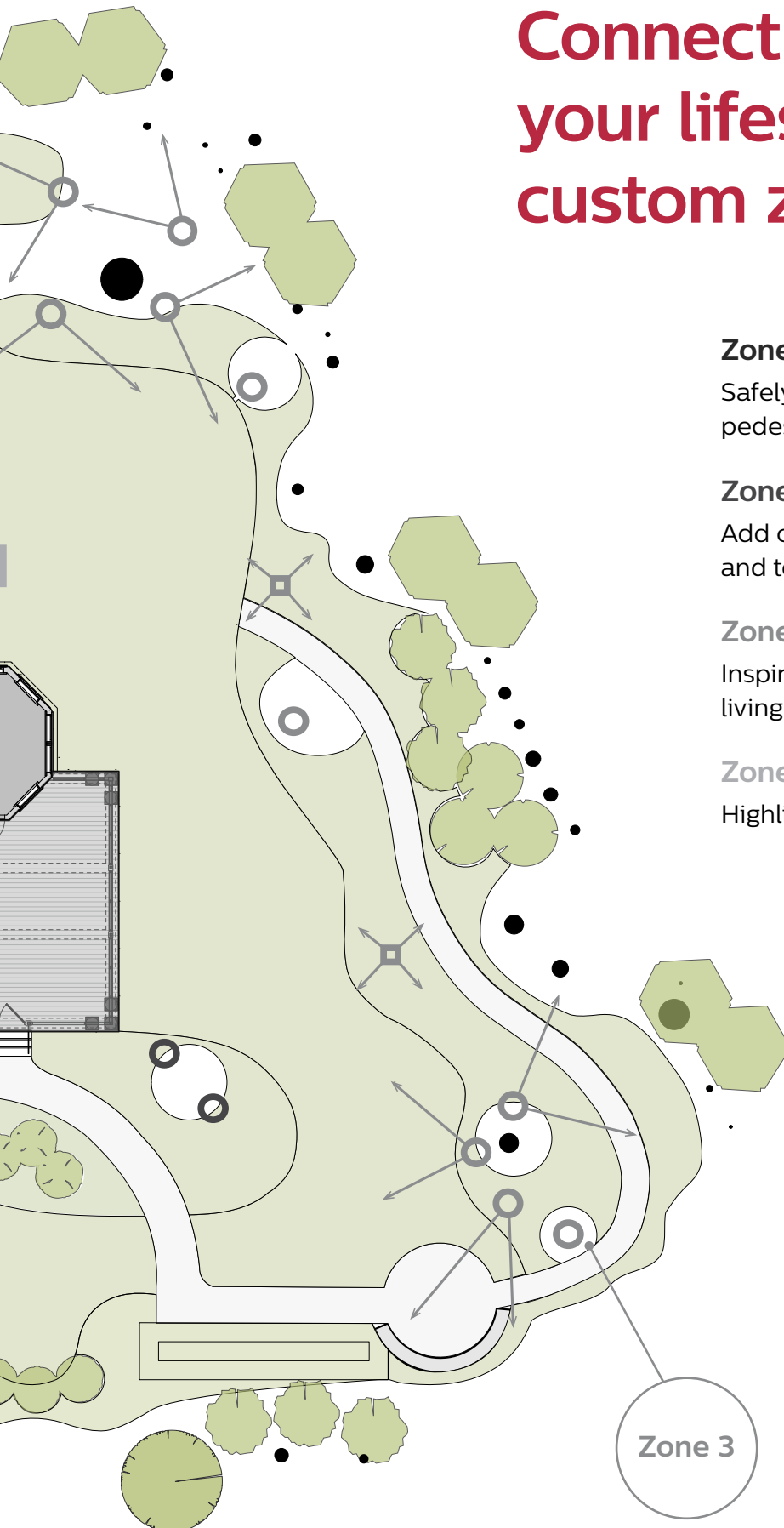
Add curb appeal, emphasize architectural lines and textures

Zone 3: Property perimeter

Inspire drama and extend your backyard living space

Zone 4: Entertainment / pool patio

Highlight a festive gathering place.



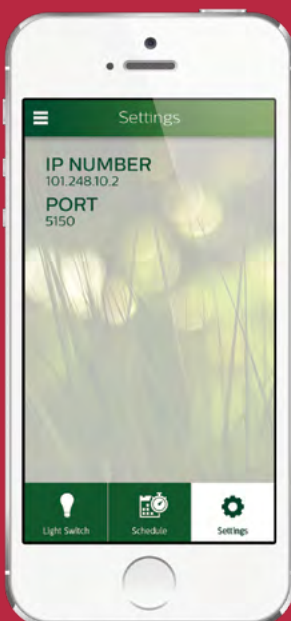
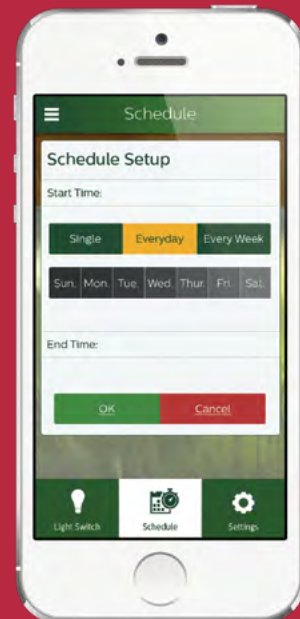


Light Switch

Once connected, user-defined zones may be named for easy reference and manually turned on/off. Up to 8 zones may be connected together, each controlling up to 300W of total outdoor luminaires.

Schedule

Use the Schedule screen to set zone on/off times for single, daily or weekly schedules.



Settings

Easily reference the connected network's internet protocol (IP) address and port.

Ordering and specifications

Product: ZoneScape 1A ordering information

ZoneScape single control module / controls 4 light switches (300W)

ZoneScape control modules pre-configured for controlling up to two units / 8 light zones (600W of total luminaires / 300W per control module)

ZoneScape modules example configuration

Four zones (one ZoneScape unit)

Configured as WiFi Access Point (provides access) for connecting and configuration via WiFi, secured with WPA2/PSK key.

Configurable via the ZoneScape app for smart phones with Android or iOS operating systems.

Eight zones (two ZoneScape units)

One of the units is configured in Access Point mode and the second in client mode for connecting and configuration via WiFi, secured with WPA2/PSK.

Configurable via the ZoneScape app for smart phones with Android or iOS operating systems.

ZoneScape app for Android™

Available on Google Play , compatible with any Android version

ZoneScape app for iOS™

Available on Apple App Store compatible with any iOS version

Housing

Housing is dark gray polyester powder-coat formed steel case with stainless steel screws and lockable captive door, hinged on side. 1/2" knockout on one side for hardwiring or accessory mounting. Exterior Mounting - should be mounted on the wall, structure, or post in the vertical position. Cable entries should be positioned downward.

Certifications

ETL Listed to U.S. safety standards for wet locations. cETL listed to Canadian safety standards for wet locations. NEMA 3R Rated.

Warranty

Five-year limited warranty.

Dimensions

Height: 11-3/8" (289mm)

Width: 6-3/8" (162mm)

Depth: 5-5/8" (143mm)

Max. Weight: 6 lbs



