

# Philips Mini Iridium LED BGS 45 I

## Mounting instructions

Instructions de montage

Montageanleitung

Montage instrukcije

Istruzioni di montaggio

Instrucciones de montaje

Instruções de montagem

Monteringsinstruktioner

Monteringsvejledning

Kokoonpano- ja kiinnitysohjeet

Montaj yönergeleri

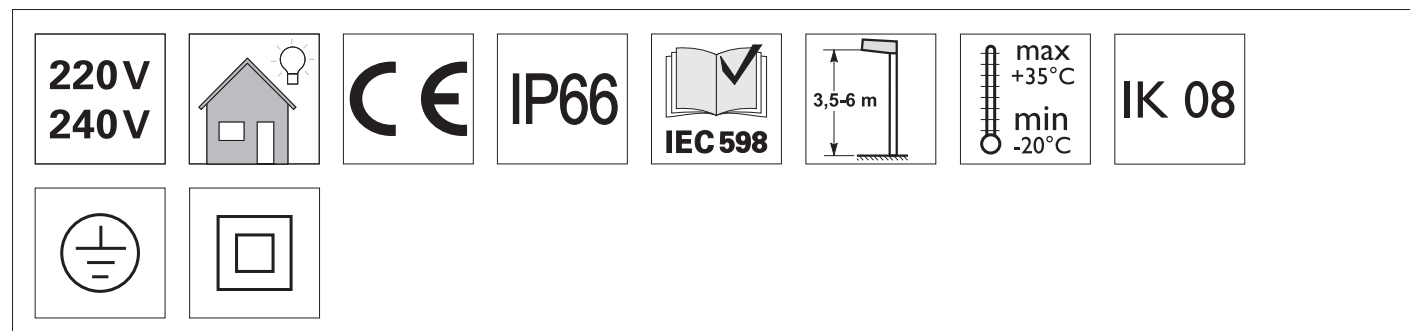
Οδηγίες συναρμολόγησης

Instrukcja montażu

Szerelési utasítások

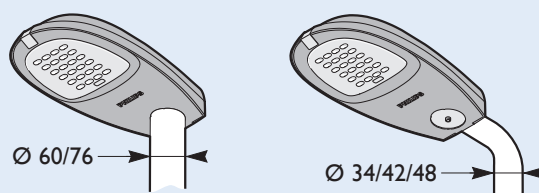
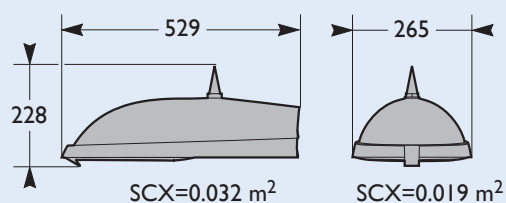
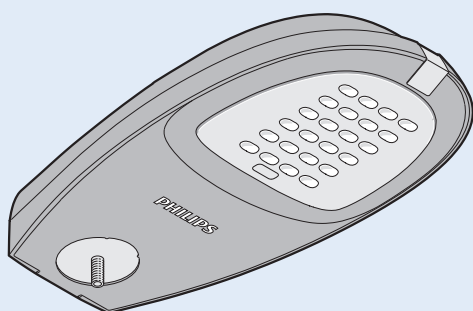
Návod k montáži

Монтажная инструкция



	LINE	W +/-10%	LED	EL		kg
LED	GRN16-2S/830	16	12	●	●	6.1
LED	GRN20-2S/740	16.8	12	●	●	6.1
LED	GRN21-2S/657	19.6	16	●	●	6.1
LED	GRN24-2S/830	22.6	18	●	●	6.1
LED	GRN29-2S/740	22.9	18	●	●	6.1
LED	GRN31-2S/657	28.8	24	●	●	6.1
LED	ECO23-2S/830	23	12	●	●	6.1
LED	ECO28-2S/740	23.6	12	●	●	6.1
LED	ECO30-2S/657	27.2	16	●	●	6.1
LED	ECO35-2S/830	34	18	●	●	6.1
LED	ECO43-2S/740	35.2	18	●	●	6.1
LED	ECO45-2S/657	40.2	24	●	●	6.1

## Mini Iridium LED BGS 45 I



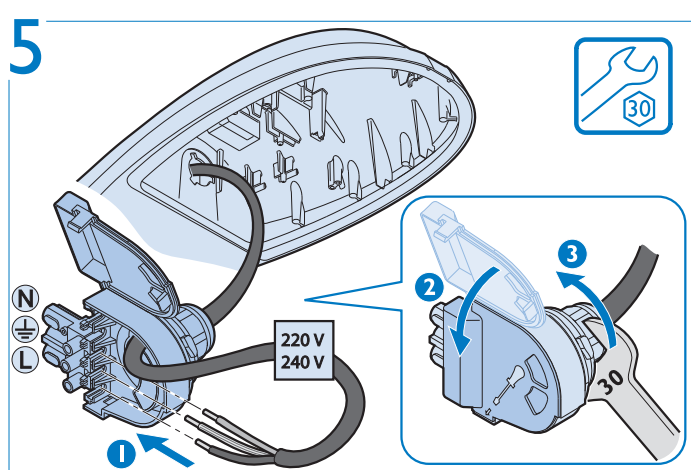
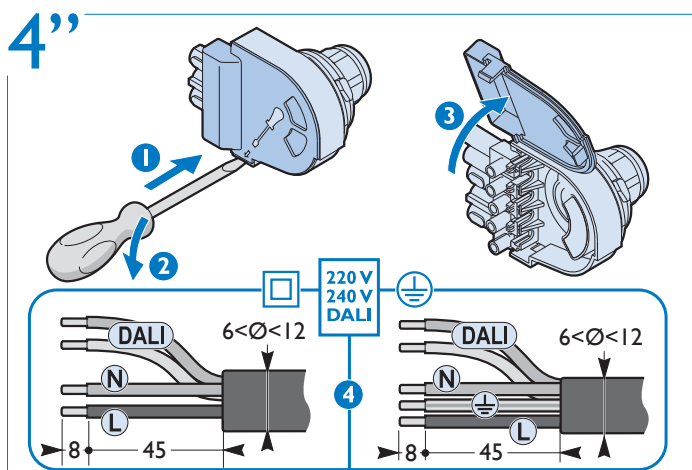
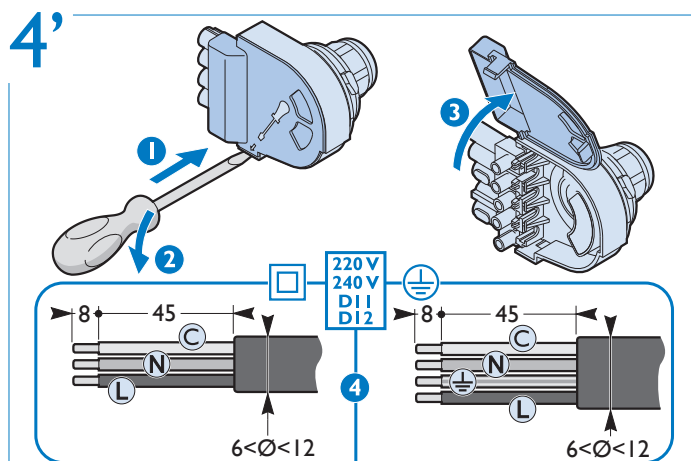
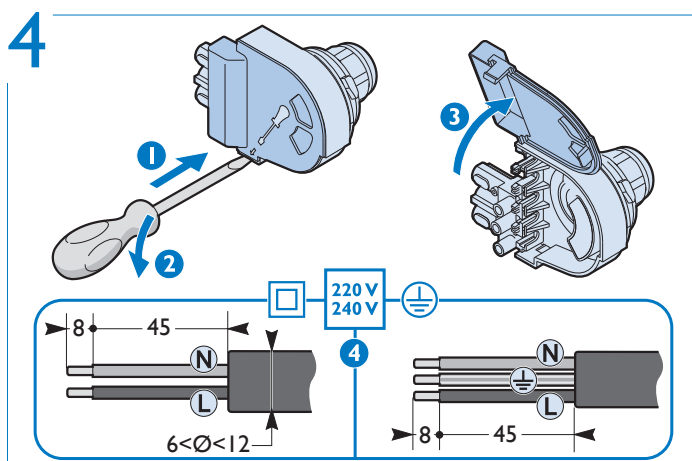
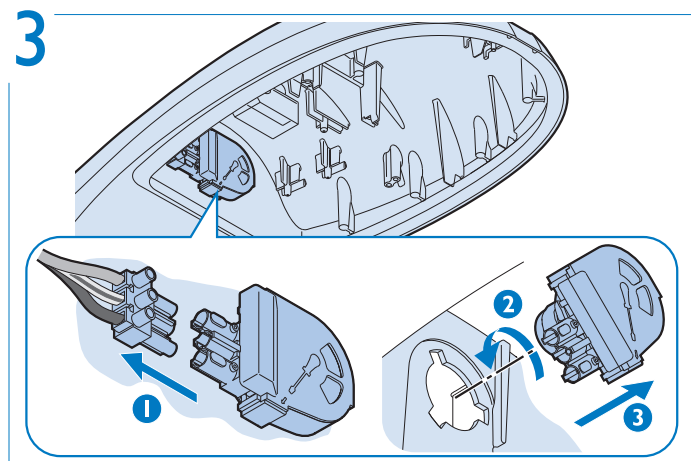
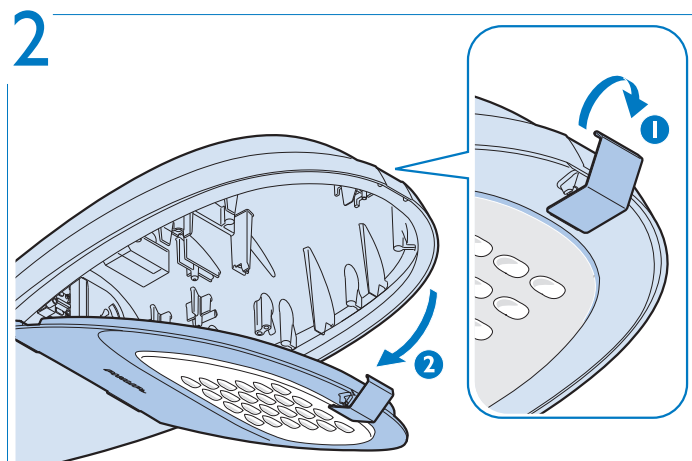
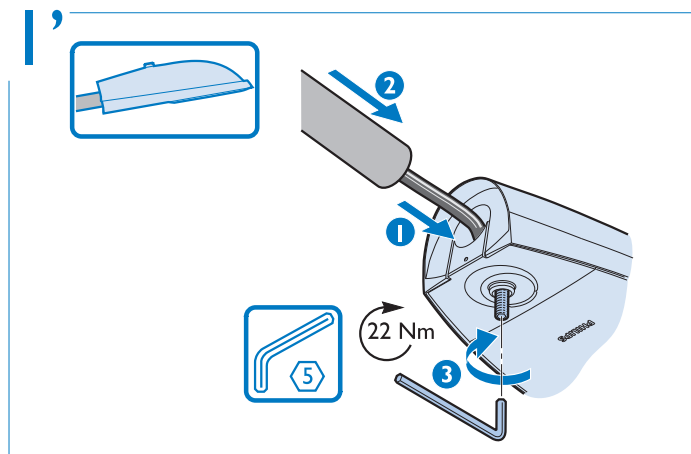
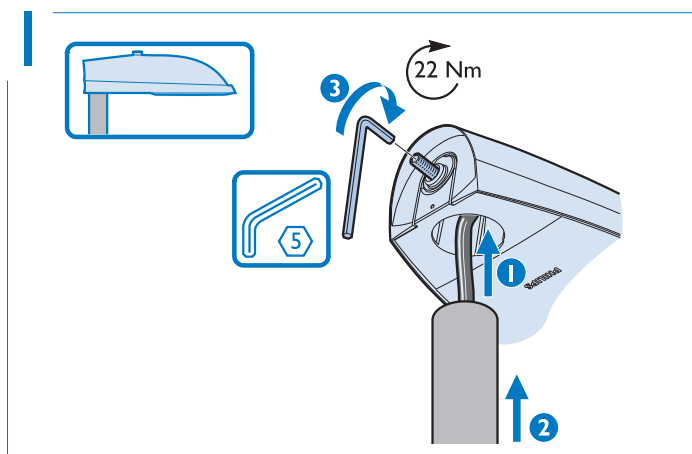
4411 102 65397

© 01/2019 Signify Holding. All rights reserved

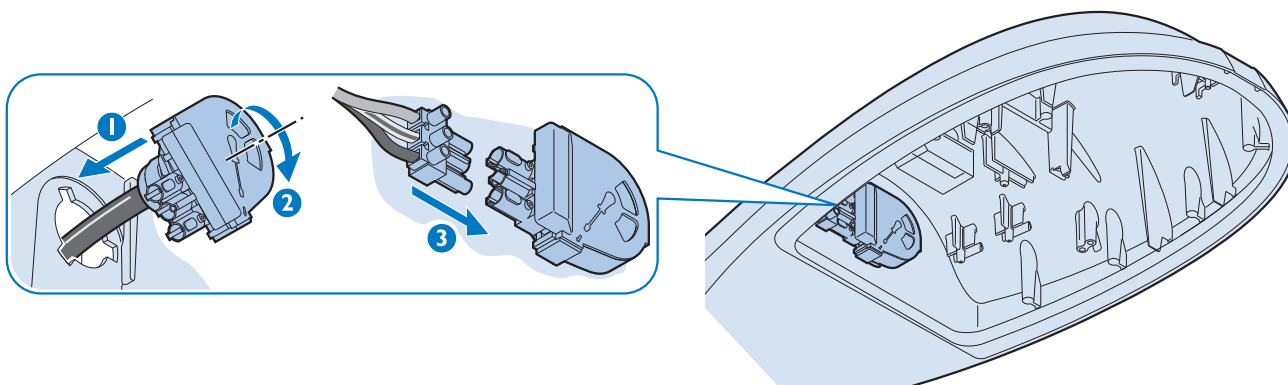
Data subject to change without notice

Printed in Poland

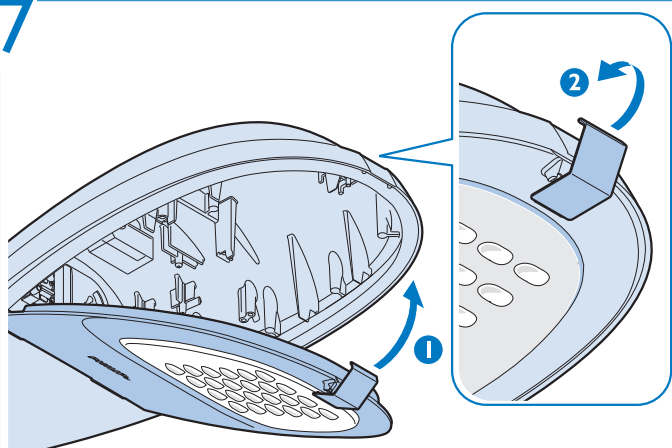
www.philips.com/lighting



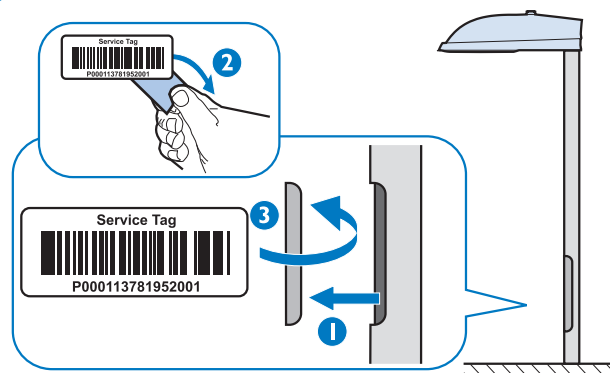
6



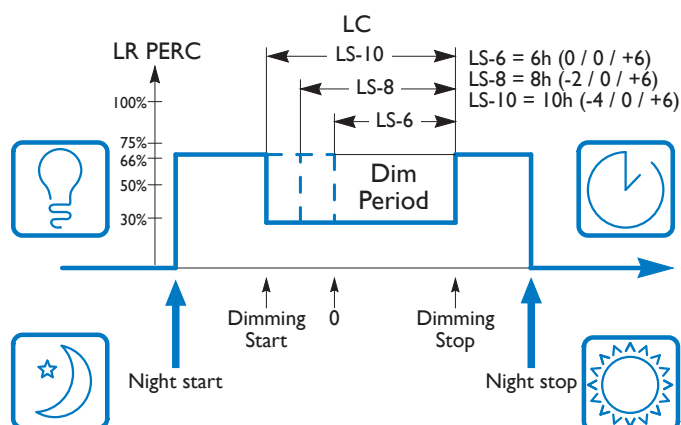
7



8

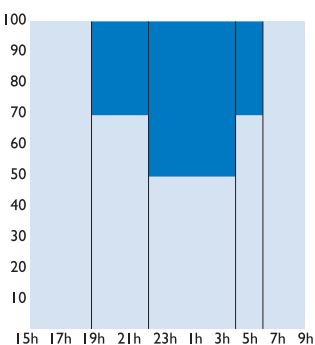


## LUMISTEP

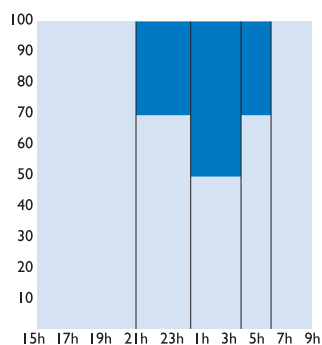


## DYNADIMMER

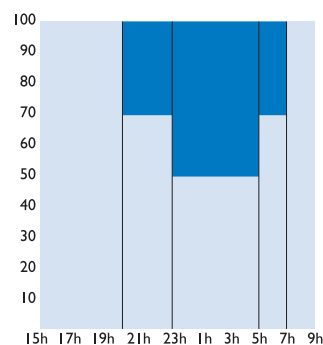
DD1/DDF1  
Road 40% saving



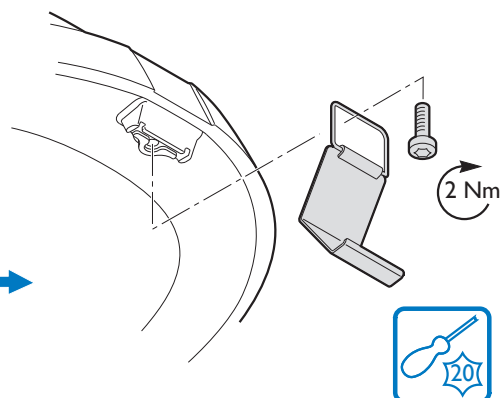
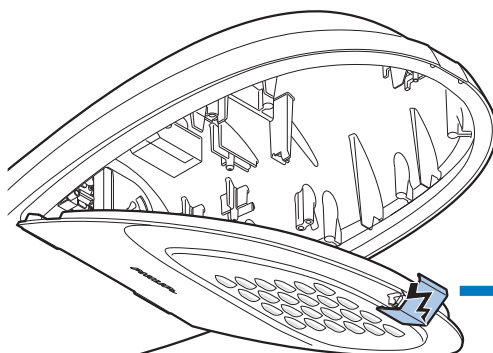
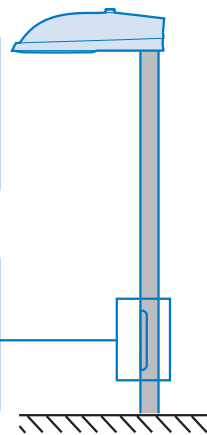
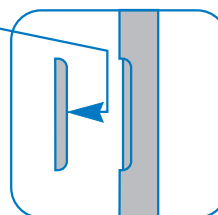
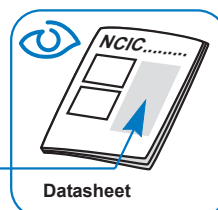
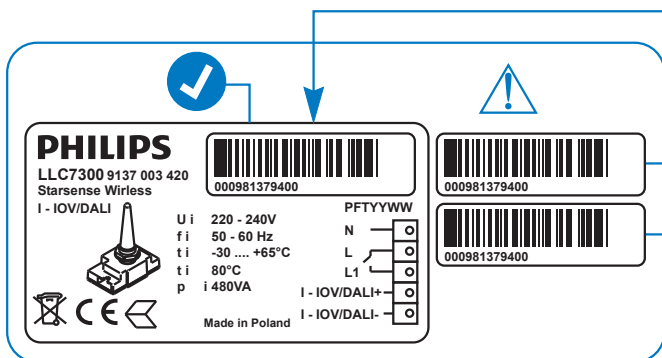
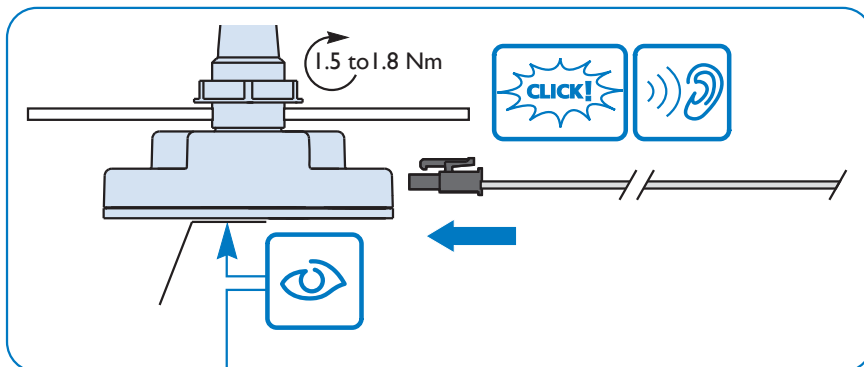
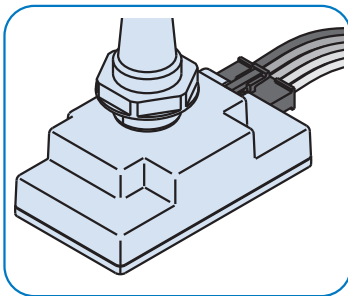
DD2/DDF2  
Road 32% saving



DD3/DDF3  
Road 50% saving



RF



© 2019 Signify Holding.

All rights reserved. This document contains information relating to the product portfolio of Signify which information may be subject to change. No representation or warranty as to the accuracy or completeness of the information included herein is given and any liability for any action in reliance thereon is disclaimed. The information presented in this document is not intended as any commercial offer and does not form part of any quotation or contract. Philips and the Philips Shield Emblem are registered trademarks of Koninklijke Philips N.V.. All other trademarks are owned by Signify Holding or their respective owners.

Signify Holding.  
The Netherlands

4411 102 65397

© 01/2019 Signify Holding. All rights reserved  
Data subject to change without notice  
Printed in Poland  
[www.philips.com/lighting](http://www.philips.com/lighting)

**PHILIPS**