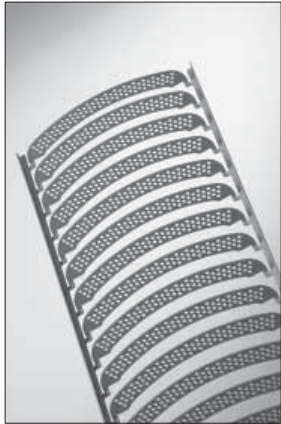




# SV5 T5 Strip Louver Accessory

Page 1 of 2

Louver Accessory for 1 or 2-lamp SV Series T5 Strips

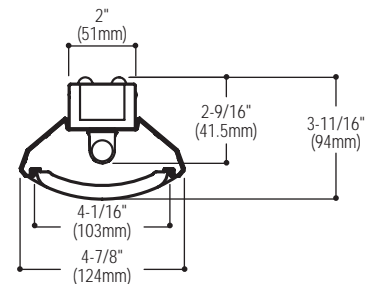
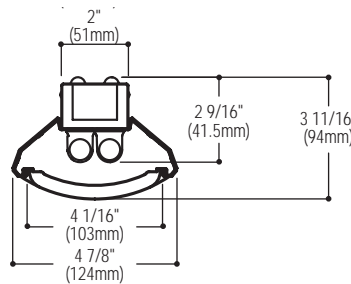
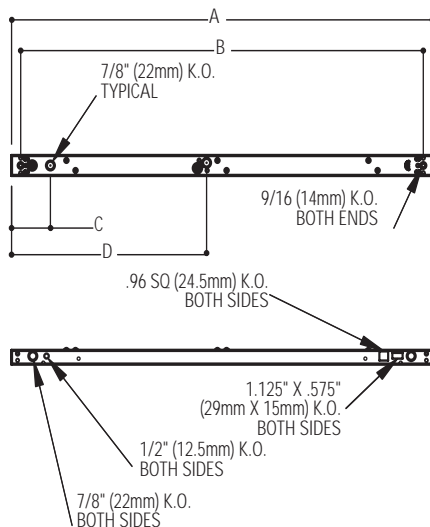
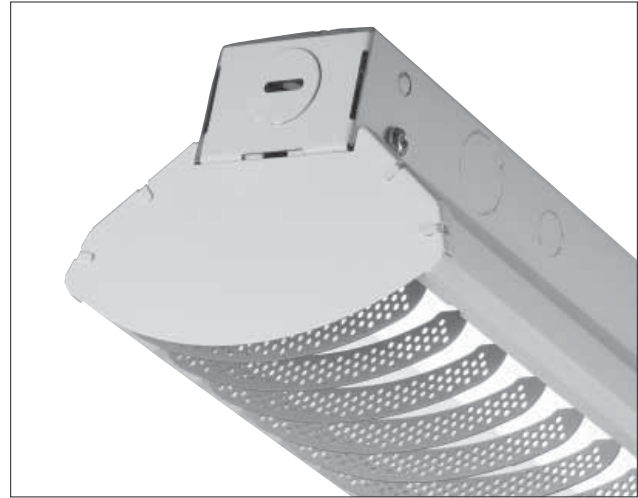


LH = Perforated Grey Blade



LW = Solid White Blade

Unique patterned perforations create consistency in design which is appealing to the eye.



	A	B	C	D
SV4S	46-1/8"	44-1/16"	4-1/4"	21-3/8"
SV8S	92-1/4"	90-3/16"	4-1/4"	44-7/16"

## Features

- Efficiency 86.1% (based on 2-28w T5HO with Perf Reflector/Louver Blade)
- Only available in 4ft. lengths
- Louver blades available in solid or perforated designs
- Continuous row mountable when used with SV Series strip
- Surface or pendant mount when used with SV Series strip
- Ordered in conjunction with SV Series T5 strip. (See back for details)

## Options:

- **SVCC60-UNV:** 6"-60" Aircraft Cable, Canopy and Power Feed Suspension Kit. Replace UNV with 347 for 347 volt requests
- **SVC60:** 6"-60" Aircraft Cable and Canopy Suspension Kit
- **SV5F48:** 48" Stem and Canopy Kit. 12", 18", 24", 36" and 48" lengths available

## Job Information

Type:

Job Name:

Cat. No.:

Lamp(s):

Notes:

CANLYTE

www.canlyte.com

525 EDUCATION ROAD, CORNWALL, ONTARIO, CANADA K6H 6C7 - (613) 938-6221  
WE RESERVE THE RIGHT TO CHANGE DETAILS OF DESIGN, MATERIALS AND FINISH  
© 2007 GENLYTE GROUP LLC (LIGHTOLIER DIVISION) • Section 5 Folio FI-0560-04

**CFI** FLUORESCENT



# SV5 T5 Strip Louver Accessory

Page 2 of 2

Louver Accessory for 1 or 2-lamp SV Series T5 Strips



## LIGHTING SCIENCES CANADA LTD.

440 Phillip St., Unit 19, Waterloo, Ontario, Canada N2L 5R9  
Tel: (519) 746-3140 Fax: (519) 746-3156 lsc@lightingsciences.ca

CERTIFIED TEST REPORT NO. LSC B765  
COMPUTED BY LSC PROGRAM \*\*TEST-LITE\*\*

CANLYTE 4' STRIP FLUORESCENT LUMINAIRE CAT. NO. SV5LVW4SPER-228  
WITH PERFORATED WHITE REFLECTOR AND A PERFORATED WHITE FLAT BLADE LOUVER  
TWO 28W T5 FLUORESCENT LAMPS. LUMEN RATING = 2600 LMS.  
ONE UNIVERSAL ACCUSTART 120-277V 1 OR 2-LAMP ELECTRONIC BALLAST NO. B228PUNV-C



CANDLEPOWER SUMMARY					OUTPUT LUMENS
ANGLE	ALONG	45	67.5	ACROSS	
0	1347	1347	1347	1347	
5	1331	1328	1351	1349	129
15	1223	1233	1287	1332	361
25	1080	1092	1168	1267	543
35	900	935	1049	1197	666
45	690	755	907	1072	701
55	468	547	725	819	617
65	266	337	469	548	443
75	120	170	265	326	265
85	21	54	155	241	161
90	0	37	133	209	191
95	0	26	130	212	195
105	1	42	128	188	118
115	32	48	121	158	106
125	52	52	103	136	86
135	56	60	76	108	61
145	58	68	64	73	42
155	48	54	68	57	60
165	50	59	48	71	17
175	70	62	66	57	47
180	58	58	58	58	58
ZONE	LUMENS	% LAMP	% LUMINAIRE		
0-30	1033	19.87	23.08		
0-40	1698	32.67	37.95		
0-60	3017	58.03	67.41		
0-90	3885	74.73	86.81		
40-90	2187	42.06	48.86		
60-90	868	16.70	19.40		
90-180	590	11.35	13.19		
0-180	4476	86.08	100.00		

\*\* EFFICIENCY = 86.1% \*\*

LUMINANCE SUMMARY-CD. / SQ. M.

PAINT REFLECTANCE = .92 S/MH = 1.5  
SC (ALONG) = 1.1, SC (ACROSS) = 1.5

ANGLE	ALONG	45	ACROSS
45	8217	7710	8759
55	6868	6760	7202
65	5306	5016	5274
75	3892	3426	3367
85	2036	2661	2942

CERTIFIED BY:

*Charles Wilson*

DATE:

JUL 4, 2007

PREPARED FOR:

CANLYTE INC.  
CORNWALL, ONTARIO

TESTED ACCORDING TO IES PROCEDURES. TEST DISTANCE EXCEEDS FIVE TIMES THE GREATEST LUMINOUS OPENING OF LUMINAIRE

LIGHTING SCIENCES CANADA LTD.  
440 PHILLIP ST., UNIT 19  
WATERLOO, ONTARIO

CERTIFIED TEST REPORT NO. LSC B765  
COMPUTED BY LSC PROGRAM \*\*TEST-LITE\*\*

CANLYTE 4' STRIP FLUORESCENT LUMINAIRE CAT. NO. SV5LVW4SPER-228  
WITH PERFORATED WHITE REFLECTOR AND A PERFORATED WHITE FLAT BLADE LOUVER  
TWO 28W T5 FLUORESCENT LAMPS. LUMEN RATING = 2600 LMS.  
ONE UNIVERSAL ACCUSTART 120-277V 1 OR 2-LAMP ELECTRONIC BALLAST NO. B228PUNV-C

### COEFFICIENTS OF UTILIZATION

#### ZONAL CAVITY METHOD

EFFECTIVE FLOOR CAVITY REFLECTANCE = .20

CC WALL	80				70				50				30				10				0
	70	50	30	10	70	50	30	10	50	30	10	50	30	10	50	30	10	50	30	10	0
RCR	0	1.001	0.001	0.001	0.00	.96	.96	.96	.96	.89	.89	.89	.83	.83	.83	.77	.77	.77	.75		
1	.91	.87	.83	.80	.88	.84	.81	.78	.78	.76	.73	.73	.71	.69	.68	.67	.65	.63			
2	.83	.76	.71	.66	.80	.74	.69	.64	.69	.65	.61	.64	.61	.58	.60	.58	.55	.53			
3	.76	.67	.61	.56	.73	.65	.59	.54	.61	.56	.52	.57	.53	.50	.54	.50	.47	.45			
4	.70	.60	.53	.47	.67	.58	.52	.46	.55	.49	.45	.51	.47	.43	.48	.44	.41	.39			
5	.64	.53	.46	.40	.61	.51	.44	.39	.48	.42	.38	.45	.40	.36	.43	.39	.35	.33			
6	.59	.48	.40	.35	.56	.46	.39	.34	.43	.37	.33	.41	.36	.32	.39	.34	.30	.29			
7	.54	.43	.35	.30	.52	.41	.35	.30	.39	.33	.29	.37	.32	.28	.35	.30	.27	.25			
8	.50	.38	.31	.26	.48	.37	.30	.26	.35	.29	.25	.33	.28	.24	.31	.27	.23	.21			
9	.46	.35	.27	.22	.44	.33	.27	.22	.32	.26	.21	.30	.25	.21	.28	.23	.20	.18			
10	.43	.31	.24	.20	.41	.30	.24	.20	.29	.23	.19	.27	.22	.18	.26	.21	.18	.16			

DETERMINED IN ACCORDANCE WITH CURRENT IES PUBLISHED PROCEDURES  
LUMINAIRE INPUT WATTS = 64.0  
LABORATORY RESULT MAY NOT BE REPRESENTATIVE OF FIELD PERFORMANCE.  
BALLAST FACTORS HAVE NOT BEEN APPLIED.




## Ordering Information

### How To Order

The fixture and Reflector/Louver components are separate items. A one or two-lamp SV Series T5 strip must be ordered in conjunction with the SV5 Louver Accessory. The two are shipped separately and later installed on site.

Please see SV spec sheets for appropriate luminaire and ballast codes of nominal 4-foot and 8-foot luminaires. Please note that two SV5 accessories are required with an 8-foot luminaire.

Explanation of Catalogue Number: SV4S228UNVPG with SV5LVW4SPER

<b>SV5</b>	<b>LV</b>	<b>W4</b>	<b>S</b>	<b>PER</b>	
Family: SV Series	Louver Blade Style: LV=Perforated White Blade LW=Solid White Blade LG=Solid Grey Blade LH=Perforated Grey Blade XX=No optic. Reflector only	Reflector: W4= Nominal 46" White (Std)	Reflector Design: S= Symmetric	Reflector Style: PER= Perforated SLT= Slotted SLD= Solid	 Perforated Reflector  Slotted Reflector  Solid Reflector

## Specifications

**Materials:** Die-formed heavy gauge cold rolled steel.

**Reflector:** White - phosphate undercoating, baked white acrylic matte high reflectance paint finish.

### Job Information

Type:

CANLYTE

525 EDUCATION ROAD, CORNWALL, ONTARIO, CANADA K6H 6C7 - (613) 938-6221  
WE RESERVE THE RIGHT TO CHANGE DETAILS OF DESIGN, MATERIALS AND FINISH  
© 2007 GENLYTE GROUP LLC (LIGHTOLIER DIVISION)

www.canlyte.com

CFI FLUORESCENT