

Day-Brite

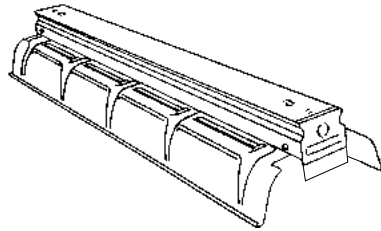
CFI

by Signify

Industrial

1FD general purpose

T8, T5, or T5HO



Project: _____

Location: _____

Cat.No: _____

Type: _____

Lamps: _____ Qty: _____

Notes: _____

Day-Brite / CFI general purpose industrial is a luminaire providing 10% upright and 13° crosswise shielding.

Ordering guide

Example: 1FD232-PP-UNV-1/2-EBLHE

Family	No. of Lamps per Cross Section	Lamp Type	Reflector Options	Voltage	Options
	2	—	—	—	
1FD Gen. Purpose Industrial (10% upright) T1FD Tandem Gen Purpose	(not included) 2	28 28WT5 (48") 32 32WT8 (48") 54HO 54WT5HO (46")	PP Painted Polyester PPS Painted Polyester solid top	UNV Universal voltage 120/277V 120 120V 277 277V 347 347V	1/2 One 2-lamp ballast 1/4 One 4-lamp ballast 2/2 Two 2-lamp ballasts EB Electronic ballast, <10% THD EB10R T8 electronic ballast, program rapid start, <10% THD EBHE T8 electronic ballast, high efficiency, std. ballast factor EBLHE T8 electronic ballast, high efficiency, low ballast factor EBHHE T8 electronic ballast, high efficiency, high ballast factor E1 B100 emerg. ballast, T8, 350-450 lumens, 120/277V E1CAN B100-CAN emerg. ballast, Canada market, T8, 350-450 lumens, 120/347V E7 B60 emerg. ballast, T8, 600-700 lumens, 120/277V E5 B50 emerg. ballast, U.S. or Canada market, T8, 1100-1400 lumens, UNV E5CAN B50-CAN emerg. ballast, Canada market, T8, 1100-1400 lumens, 120/347V E5ST B50ST emerg. ballast w/self test, T8, 1100-1400 lumens, UNV E7LP LP550 emerg. ballast T5/T5HO, 430-700 lumens, 120/277V E6LP LP600 emerg. ballast U.S. or Canada market, T5/T5HO, 750-1325 lumens, 120/277V GLR Fusing, fast blow LT20 -20°F start option (T8, use in conjunction with ballast option)

Power Connect modular wiring available, see sheet 1604-OA for details

Accessories (order separately)

- **CS-400** Rigid Canopy
- **CS-500** 42" Top Swivel Canopy
- **CS-12** 12" Stem
- **CS-18** 18" Stem
- **CS-24** 24" Stem
- **CS-30** 30" Stem
- **CS-36** 36" Stem
- **CS-48** 48" Stem
- **FL-111** Sliding hanger, conduit/stem/screw
- **FL-117** Hook, chain (requires FL-111)
- **FL-119** Hook, messenger cable (requires FL-111)
- **FL-123** 5' chain (w/S-hooks) set
- **FL-173** 4' wire guard (use 2 for 8')
- **FL-3** Channel coupling
- **N-3381** Universal joint aligner, octagonal box, 3/4" I.P.S.



1FD General purpose industrial

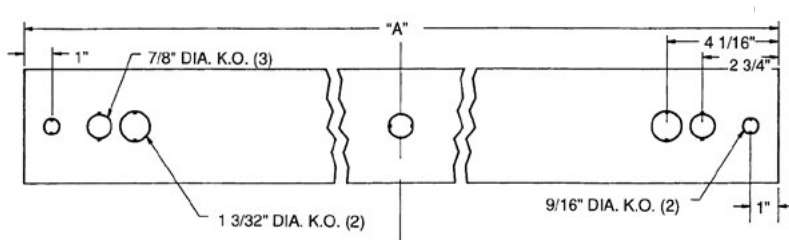
Construction/Finish

- Housing and reflector are multi-stage phosphate treated for maximum corrosion resistance and finish coat is high reflectance baked white enamel.
- Multiple knockouts for convenient installation.
- Heavy duty channel of code gauge die formed steel,
- Reflectors have stiffening ribs for rigidity and provide 13° crosswise shielding.
- Twist-lock reflector thumb screws.
- Continuous rows utilize a simple concealed coupling, FL-3 (optional).
- Apertured reflector (11-13% uplight) standard.
- Solid top reflector (no uplight) optional.

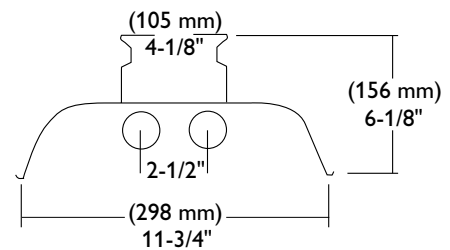
Electrical

- cULus listed for direct mounting on low density ceilings and damp locations.
- Lampholders provide positive lamp engagement and electrical contact.

Dimensions



DIM "A"	
4' CHANNEL (1219 mm)	48"
8' CHANNEL (2439 mm)	96"



1FD General purpose industrial

Photometry

1FD 4' 2 Lamp F32T8

Efficiency – 91.7%

LER – FI-80

		Candlepower				Light Distribution				Average Luminance			
		Angle	End	45	Cross	Degrees	Lumens	% Lamp	% Luminaire	Angle	End	45'	Cross
Catalog No.	1FD232-PP-1/2-EB	0	1452	1452	1452	0-30	1159	20.0	21.8	45	3509	3786	4200
Test No.	42334	5	1452	1453	1447	0-40	1930	33.3	36.3	55	3423	4115	3821
S/MH	1.3	15	1407	1426	1429	0-60	3567	61.5	67.0	65	3256	3672	3778
Lamp Type	F32T8	25	1312	1345	1360	0-90	4654	80.2	87.5	75	2912	3879	2567
Lumens/Lamp	2900	35	1178	1230	1264	90-180	666	11.5	12.5	85	2190	2304	1849
Ballast Factor	0.92	45	1001	1080	1198	0-180	5321	91.7	100.0				
Input Watts	61	55	792	952	884								
		65	555	626	644								
		75	304	405	268								
		85	77	81	65								
		95	8	21	20								
		105	59	23	69								
		115	127	17	21								
		125	197	43	18								
		135	265	112	57								
		145	322	188	136								
		155	369	252	220								
		165	399	389	318								
Comparative yearly lighting energy cost per 1000 lumens – \$3.00 based on 3000 hrs. and \$.08 pwr KWH.													
The photometric results were obtained in the Day-Brite laboratory which is NVLAP accredited by the National Institute of Standards and Technology.													
						Coefficients of Utilization							
						EFFECTIVE FLOOR CAVITY REFLECTANCE 20 PER (pfc=0.20)							
						pcc				80			
										70			
										50			
						pw				70			
										50			
										30			
						RCR				70			
										50			
										30			
						0				106			
										106			
										106			
						1				96			
										92			
										88			
						2				88			
										80			
										73			
						3				80			
										69			
										61			
						4				72			
										61			
										53			
						5				67			
										55			
										46			
						6				60			
										48			
										40			
						7				56			
										44			
										35			
						8				53			
										40			
										33			
						9				48			
										36			
										28			
						10				46			
										34			
										27			
										44			
										33			
										26			



Some luminaires use fluorescent or high intensity discharge (HID) lamps that contain small amounts of mercury. Such lamps are labeled, "Contain Mercury" and/or the symbol "HG". Lamps that contain mercury must be disposed of in accordance with local requirements. Information regarding lamp recycling and disposal can be found at www.lamprecycle.org

