

Day-Brite

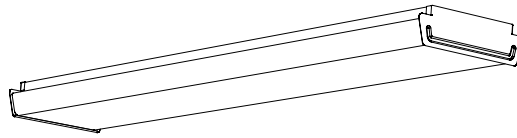
CFI

by Signify

Linear

OW wraparound

Narrow, 4' or 8',
T5, T5HO, or T8



Project: _____

Location: _____

Cat.No: _____

Type: _____

Lamps: _____ Qty: _____

Notes: _____

The Day-Brite / CFI OW wraparound narrow is a functional and economical lift-and-shift wrap, ideal for surface mount general illumination in light commercial and residential applications.

Ordering guide

Example: **OWN228-UNV-1/2-EB**

Series	Width	No. of Lamps per Cross Section	Lamp Type	Voltage	Options
	<input type="text" value="N"/>				
OW Wraparound TOW Tandem (8')	N Narrow	(not included) 2	28 28WT5 (46") 32 32WT8 (48") 54HO 54WT5HO (46")	UNV Universal voltage 120/277V 120 120V 277 277V 347 347V	1/2 One 2-lamp ballast 1/4 One 4-lamp ballast 2/2 Two 2-lamp ballasts EB Electronic ballast, <10% THD EB10R T8 electronic ballast, program rapid start, <10% THD EBHE T8 electronic ballast, high efficiency, std. ballast factor EBLHE T8 electronic ballast, high efficiency, low ballast factor EBHHE T8 electronic ballast, high efficiency, high ballast factor EBSD T8 electronic step dimming ballast, .88 ballast factor EBD7 Advance Mark 7 dimming ballast, 0-10V (low voltage) control EBDX Advance Mark 10 dimming ballast, phase control EBD Electronic dimming ballast, customer specified E1 B100 emerg. ballast, T8, 350-450 lumens, 120/277V E1CAN B100-CAN emerg. ballast, Canada market, 350-450 lumens, 120/347V E7 B60 emerg. ballast, T8, 600-700 lumens, 120/277V E5 B50 emerg. ballast, US or Canada market, T8, 1100-1400 lumens, UNV E5CAN B50 -CAN emerg. ballast, Canada market, 1100-1400 lumens, 120/347V E5ST B50ST emerg. ballast w/self test, T8, 1100-1400 lumens, UNV E7LP LP550 emerg. ballast, T5/T5HO, 430-700 lumens, 120/277V E6LP LP600 emerg. ballast, US or Canada market, T5/T5HO, 750-1325 lumens, 120/277V GLR Fusing, fast blow

See Section 1600-OA for Option Information.

See Page 950-SS for Mounting Hardware.

Accessories (order separately)

- **CS-400** – Rigid Canopy
- **CS-500** – 42" Top Swivel Canopy
- **CS-12** – 12" Stem
- **CS-18** – 18" Stem
- **CS-24** – 24" Stem
- **CS-30** – 30" Stem
- **CS-36** – 36" Stem
- **CS-48** – 48" Stem



OWN Wraparound, narrow

4' or 8', T5, T5HO, or T8

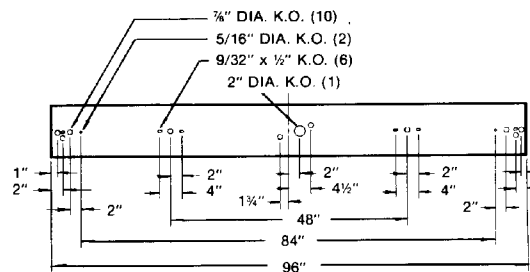
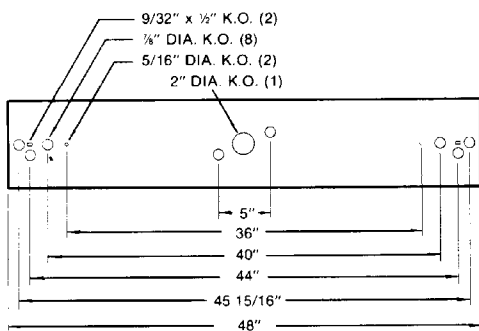
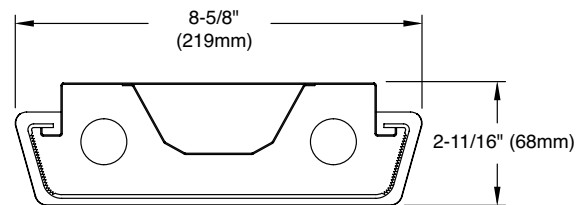
Construction/Finish

- Pattern 12 bottom prisms with interior linear side wall prisms for maximum cleanliness and light control.
- Tapered shape provides a modern appearance.
- Full steel end plates feature embosses for improved aesthetics.
- 100% virgin acrylic lens hinges from either side for easy maintenance.
- Housing is multi-stage phosphate treated for maximum corrosion resistance and finish coat is high reflectance baked white enamel.
- Multiple knockouts accomodate a variety of mounting methods.
- Heavy duty channel of code gauge die formed steel.
- For surface or stem mounting.

Electrical

- cULus listed for direct mounting on low density ceilings and damp locations.
- Self-contained fluorescent emergency power packs can be incorporated.
- Lampholders may be individually replaced or rewired.

Dimensions



OWN Wraparound, narrow

4' or 8', T5, T5HO, or T8

Photometry

Linear wraparound OWN 4ft, 2 Lamp T8

Efficiency – 72.8%

LER – 66

TER – 56

		Candlepower				Light Distribution				Average Luminance					
		Angle	End	45	Cross	Degrees	Lumens	% Lamp	% Luminaire	Angle	End	45°	Cross		
Catalog No.	OWN232-1/2-EB														
Test No.	ITL41979	0	1315	1315	1315	0-30	1057	18.2	25.0	45	4841	4948	4708		
S/MH	1.4	5	1317	1315	1310	0-40	1761	30.4	41.7	55	3776	3765	3225		
Lamp Type	F32T8	15	1275	1291	1302	0-60	3035	52.3	71.9	65	2387	2329	2547		
Lumens/Lamp	2900	25	1180	1233	1269	0-90	3711	64.0	87.9	75	1733	1945	2454		
Input Watts	59	35	1042	1138	1168	90-180	511	8.8	12.1	85	1654	2519	3741		
		45	855	962	999	0-180	4222	72.8	100.0						
		55	541	617	595										
		65	252	299	385										
		75	112	173	278										
		85	36	118	269										
		95	0	126	265										
		105	1	157	244										
		115	4	123	182										
		125	7	71	112										
		135	10	36	53										
		145	9	31	41										
		155	8	22	32										
		165	7	12	20										
		175	7	7	8										
Comparative yearly lighting energy cost per 1000 lumens – \$3.64 based on 3000 hrs. and \$.08 pwr KWH.															
The photometric results were obtained in the Day-Brite laboratory which is NVLAP accredited by the National Institute of Standards and Technology.															
		Coefficients of Utilization				EFFECTIVE FLOOR CAVITY REFLECTANCE 20 PER (pfc=0.20)									
						pcc		80			70			50	
						pw		70			50			30	
						RCR		70			50			30	
						0	84	84	84	81	81	81	76	76	
						1	77	73	69	73	70	68	66	64	
						2	69	65	59	68	61	57	57	55	
						3	64	56	51	61	55	50	52	46	
						4	58	51	44	56	48	42	46	40	
						5	54	45	39	52	44	38	41	35	
						6	50	40	34	47	40	34	38	32	
						7	46	36	30	45	35	29	34	28	
						8	42	34	28	41	33	27	30	26	
						9	40	30	25	39	29	25	28	23	
						10	38	28	23	36	28	23	27	22	



Some luminaires use fluorescent or high intensity discharge (HID) lamps that contain small amounts of mercury. Such lamps are labeled, "Contain Mercury" and/or the symbol "HG". Lamps that contain mercury must be disposed of in accordance with local requirements. Information regarding lamp recycling and disposal can be found at www.lamprecycle.org

