

LUMEC

by  Signify

Tunnel

TubeLine

TBL



Comfortable illumination from a compact yet powerful solution

With excellent lighting uniformity, visual guidance, and color recognition, linear lighting offers motorists superior lighting quality and can enhance safety in tunnel applications. TubeLine achieves all of this and adds the benefits of LED technology.

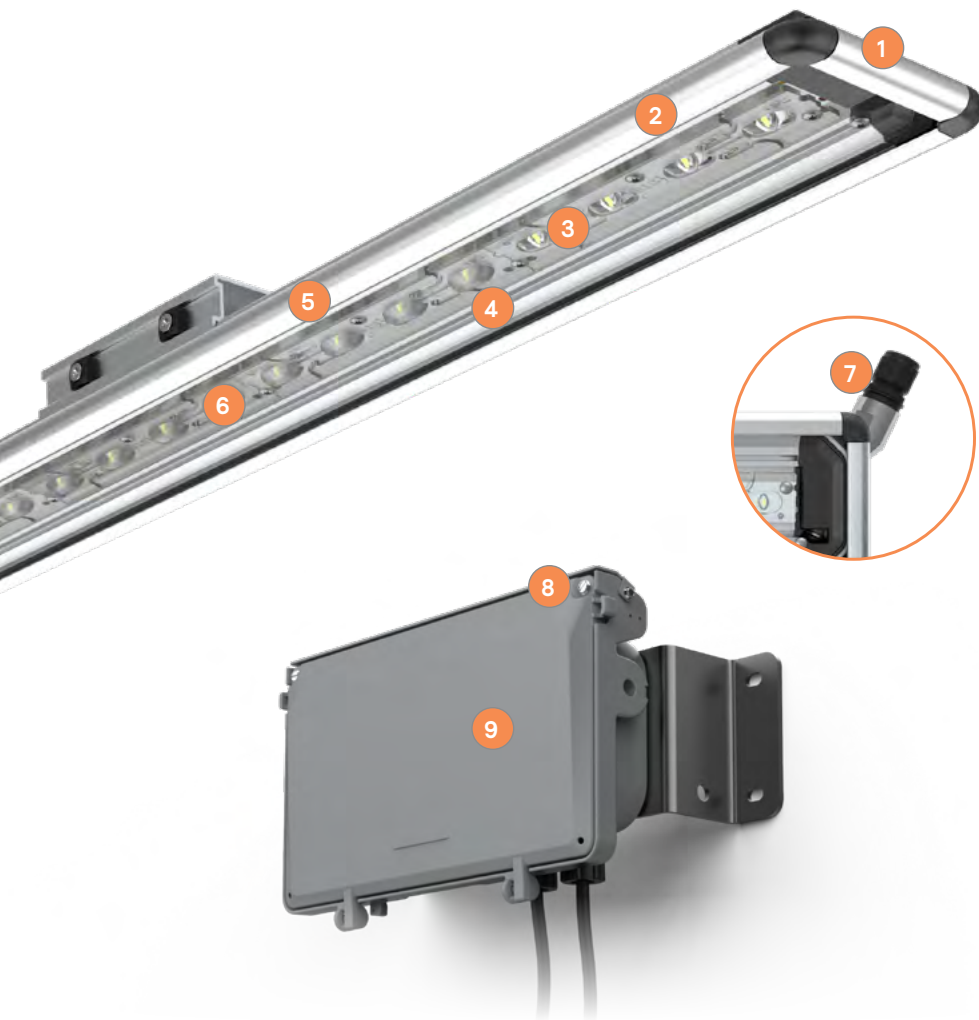
Thanks to a wide range of optics and lumen outputs, TubeLine is configurable to suit any application needs. Designed for quick installation and low maintenance, TubeLine can help you save money and time.

- Lumen output ranges from 3,200 to 18,000
- 3000K and 4000K color temperatures
- Wattages range from 31-167W
- Six distribution types
- Choice of fixed and swivel mounting brackets
- Controls ready, compatible with various systems
- Service Tag is standard on driver box



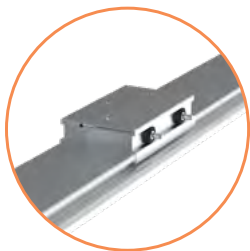
TBL TubeLine

Tunnel luminaire

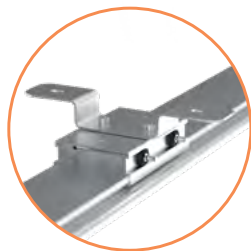


- 1 Slim profile**
Maximizes headroom and simplifies installation
- 2 Anodized aluminum finish**
Provides corrosion resistance
- 3 Tempered glass lens**
Offers IK08 protection
- 4 Gasketing**
Weather-proof gasketing for IP66 rated luminaire
- 5 Durable construction**
Sturdy, factory sealed design, meeting 3G vibration
- 6 Direct mounted LEDs**
LEDs are mounted directly to the large aluminum housing surface for superior cooling
- 7 Flying lead**
For easy connection
- 8 Stainless steel hardware**
All exposed screws are stainless steel with ceramic primer seal for high resistance to corrosion
- 9 Durable construction**
Rugged low copper die-cast housing for maximum durability in harsh environments
- 10 Service Tag**
Signify's innovative way to provide assistance throughout the life of the driver box

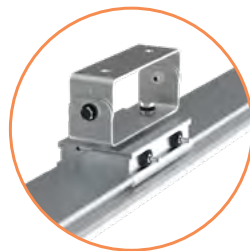
Mounting options



Od1 fixed bracket



Od2 fixed bracket



Swivel bracket



The information presented in this document is not intended as any commercial offer and does not form part of any quotation or contract.

