

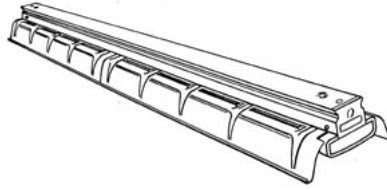
# Day-Brite CFI

by  Signify

## Industrial

1F specification

T8 or T12 high output



Project: \_\_\_\_\_  
 Location: \_\_\_\_\_  
 Cat.No: \_\_\_\_\_  
 Type: \_\_\_\_\_  
 Lamps: \_\_\_\_\_ Qty: \_\_\_\_\_  
 Notes: \_\_\_\_\_

Day-Brite / CFI 1F specification industrial is a heavy duty turret industrial fluorescent luminaire providing 10% upright and 13° crosswise shielding.

### Ordering guide

Example: 1F286HO-PP-UNV-1/2-EB

Family	No. of Lamps per Cross Section	Lamp Type	Reflector Options	Voltage	Options
1F		—	—	—	
<b>1F</b> Spec. Industrial (10% upright)	(not included) <b>2</b> <b>3</b>	<b>44HO</b> 44W T8 380 mA (48") <b>48HO</b> 60W T12 800 mA (48") <b>86HO</b> 86W T8 380 mA (96") <b>96HO</b> 110W T12 800 mA (96")	<b>PP</b> Painted Polyester <b>PPS</b> Painted Polyester solid top	<b>UNV</b> Universal voltage 120/277V <b>120</b> 120V <b>277</b> 277V <b>347</b> 347V	<b>1/2</b> One 2-lamp ballast <b>1/21</b> 2-lamp & 1-lamp ballasts <b>EB</b> Electronic ballast, <20% THD <b>E7</b> B60 emerg. ballast, 600-700 lumens, 120/277V <b>E5</b> B50 emerg. ballast, U.S. or Canada market, 1100-1400 lumens, UNV <b>E5CAN</b> B50-CAN emerg. ballast, Canada market, 1100-1400 lumens, 120/347V <b>E5ST</b> B50ST emerg. ballast w/self test, 1100-1400 lumens, UNV <b>GLR</b> Fusing, fast blow  Power Connect modular wiring available, see sheet 1604-OA for details

### Accessories (order separately)

- **CS-400** Rigid Canopy
- **CS-500** 42" Top Swivel Canopy
- **CS-12** 12" Stem
- **CS-18** 18" Stem
- **CS-24** 24" Stem
- **CS-30** 30" Stem
- **CS-36** 36" Stem
- **CS-48** 48" Stem
- **FL-111** Sliding hanger, conduit/stem/screw
- **FL-117** Hook, chain (requires FL-111)
- **FL-119** Hook, messenger cable (requires FL-111)
- **FL-123** 5' chain (w/S-hooks) set
- **FL-173** 4' wire guard (use 2 for 8')
- **FL-3** Channel coupling
- **FL-5** Reflector end cap (pair)
- **N-3381** Universal joint aligner, octagonal box, 3/4" I.P.S.



# 1F Specification industrial

## T8 or T12 high output

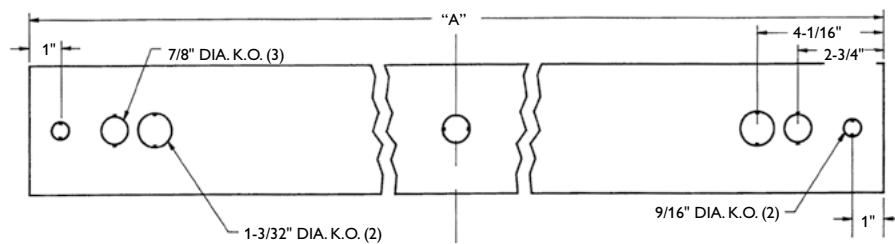
### Construction/Finish

- Reflectors provide 10% uplight. Solid tops are available.
- Multiple knockouts for convenient installation.
- Heavy duty channel of code gauge die formed steel,
- Reflectors have stiffening ribs for rigidity and provide 13° crosswise shielding.
- Twist-lock reflector thumb screws.
- Continuous rows utilize a simple concealed coupling, FL-3 (optional).

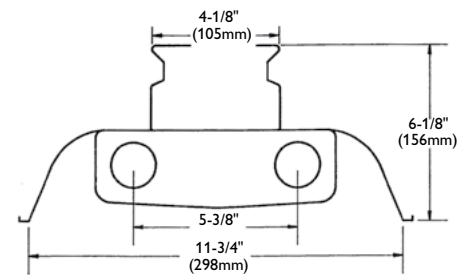
### Electrical

- cULus listed for damp locations.
- Self-contained fluorescent emergency power packs can be incorporated.
- Spring-loaded turret lampholders provide positive lamp engagement and electrical contact.
- **IMPORTANT! High Output luminaires must be suspended with a minimum 1-1/2" clearance to ceiling.**
- Day-Brite's standard luminaires for high output T8 (380 mA) and T12 (800 mA) include ballasts rated for -20°F starting temperature.

### Dimensions



DIM "A"		
4' Channel	(1227mm)	48-5/16"
8' Channel	(2446mm)	96-5/16"



# 1F Specification industrial

T8 or T12 high output

## Photometry

1F 8' 2 Lamp F96T12HOES

Efficiency – 90.4%

LER – 68

TER – 41

Catalog No.	1F296-HO-PP-1/2-EB	Candlepower				Light Distribution				Average Luminance				
		Angle	End	45	Cross	Degrees	Lumens	% Lamp	% Luminaire	Angle	End	45'	Cross	
Test No.	42348	0	3896	3896	3896	0-30	3106	19.4	21.5	45	4957	5409	5848	
S/MH	1.4	5	3893	3870	3924	0-40	5197	32.5	35.9	55	4892	5721	5606	
Lamp Type	F96T12HOES	15	3785	3773	3847	0-60	9666	60.4	66.8	65	4656	5400	5317	
Lumens/Lamp	8000	25	3544	3595	3723	0-90	12698	79.4	87.8	75	4170	5384	4359	
Ballast Factor	0.84	35	3187	3350	3490	90-180	1766	11.0	12.2	85	3325	2985	2867	
Input Watts	178	45	2722	2970	3211	0-180	14464	90.4	100.0					
		55	2179	2548	2497	<b>Coefficients of Utilization</b>								
		65	1528	1772	1745	<b>EFFECTIVE FLOOR CAVITY REFLECTANCE 20 PER (pfc=0.20)</b>								
		75	838	1082	876	pcc	80			70			50	
		85	225	202	194	pw	70	50	30	70	50	30	50	30
		95	26	61	70	RCR								
		105	165	83	148	0	105	105	105	101	101	101	93	93
		115	343	73	68	1	94	91	86	92	88	83	81	79
		125	524	183	101	2	85	79	71	82	76	69	70	66
		135	691	321	225	3	78	68	60	75	66	59	61	56
		145	829	452	374	4	71	60	52	68	58	51	55	48
		155	940	574	515	5	66	54	46	63	52	44	48	41
		165	1015	881	752	6	59	47	40	57	46	39	44	36
		175	1049	1019	1020	7	56	44	35	54	41	34	40	33
						8	52	40	32	50	38	30	35	29
						9	47	35	28	46	34	28	33	27
						10	45	33	26	44	32	26	30	25

Comparative yearly lighting energy cost per 1000 lumens – \$3.53 based on 3000 hrs. and \$.08 pwr KWH.

The photometric results were obtained in the Day-Brite laboratory which is NVLAP accredited by the National Institute of Standards and Technology.



Some luminaires use fluorescent or high intensity discharge (HID) lamps that contain small amounts of mercury. Such lamps are labeled, "Contain Mercury" and/or the symbol "HG". Lamps that contain mercury must be disposed of in accordance with local requirements. Information regarding lamp recycling and disposal can be found at [www.lamprecycle.org](http://www.lamprecycle.org)

