

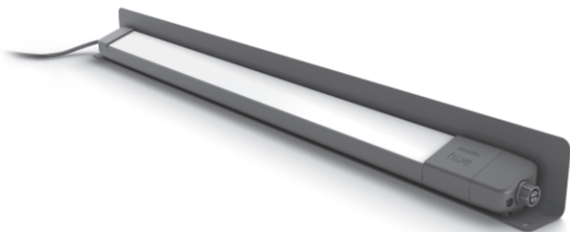
**PHILIPS**

hue personal  
wireless  
lighting

**Amarant**

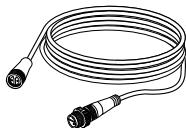


HUE serial number

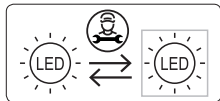
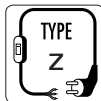
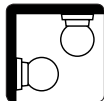
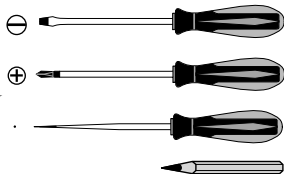
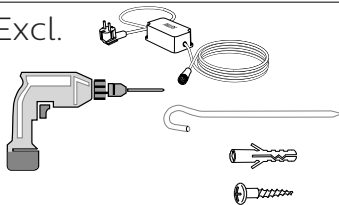


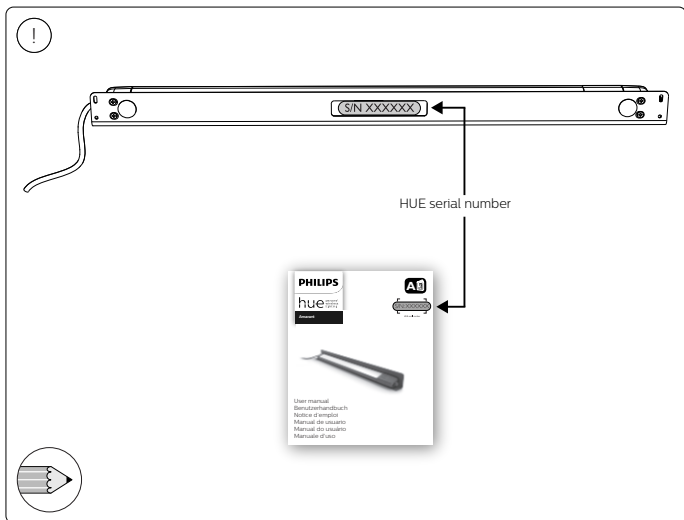
User manual  
Benutzerhandbuch  
Notice d'emploi  
Manual de usuario  
Manual do usuário  
Manuale d'uso

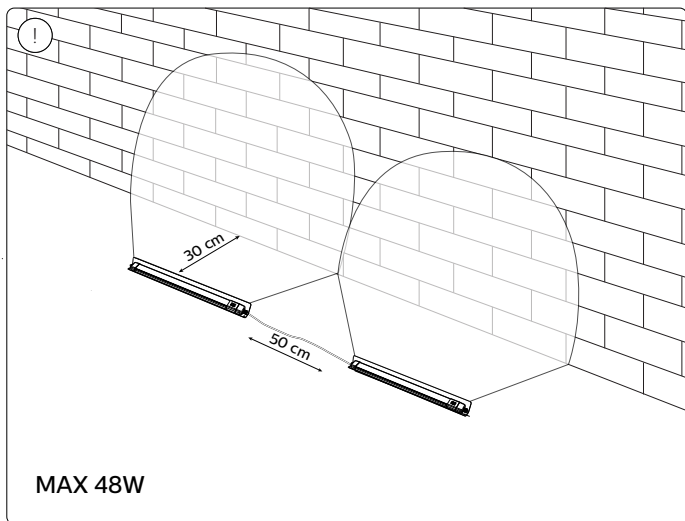
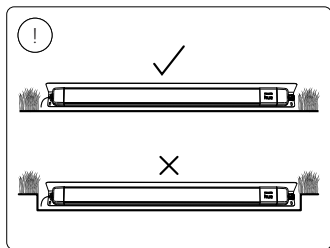
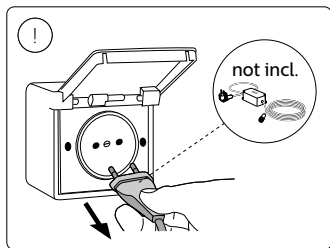
Incl.

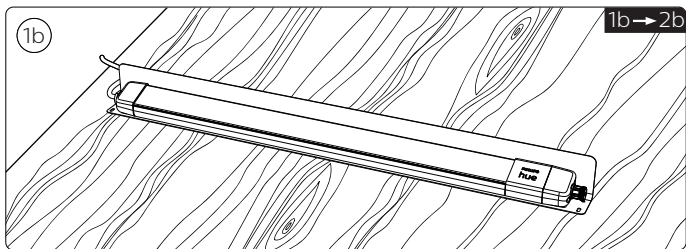
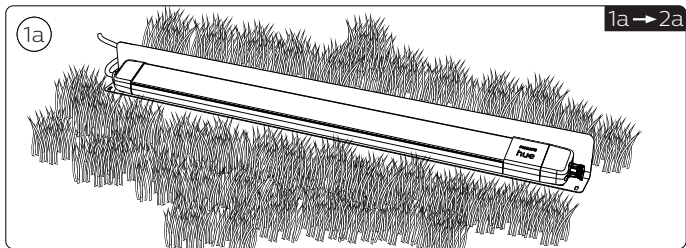


Excl.

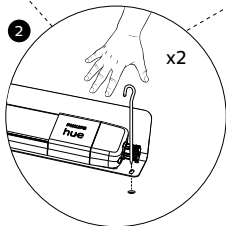
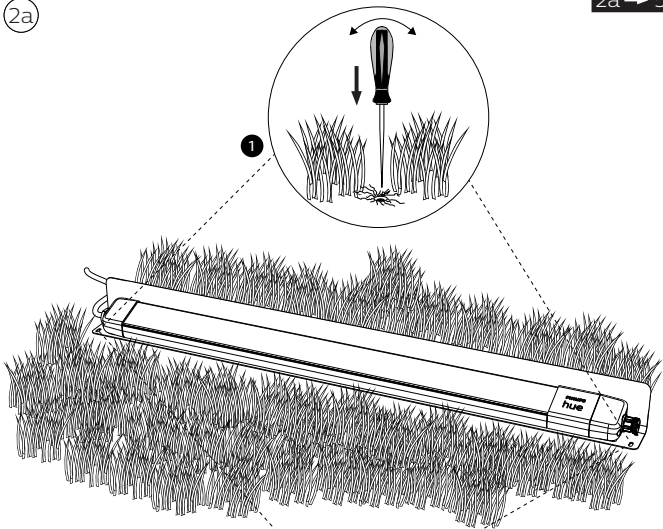


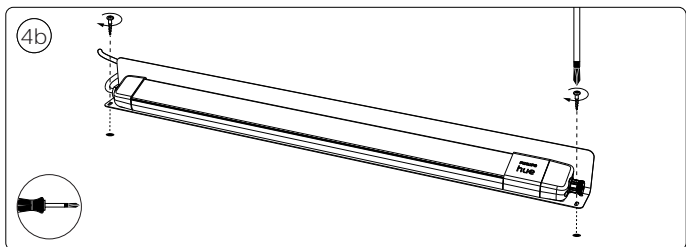
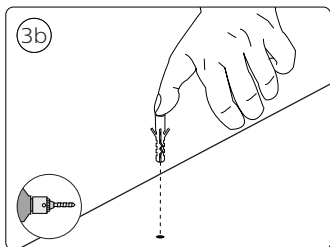
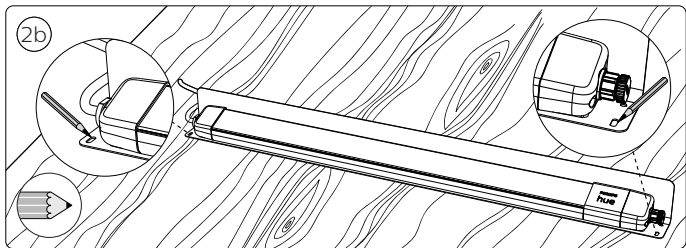


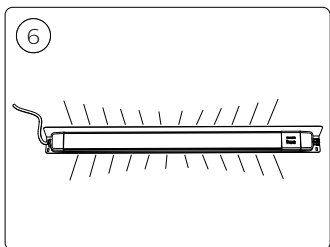
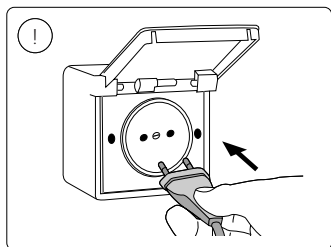
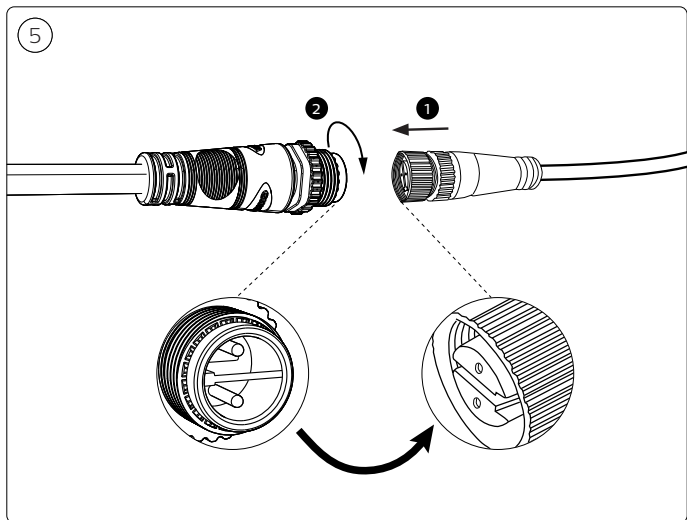




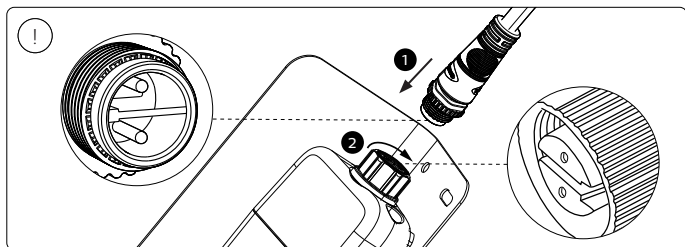
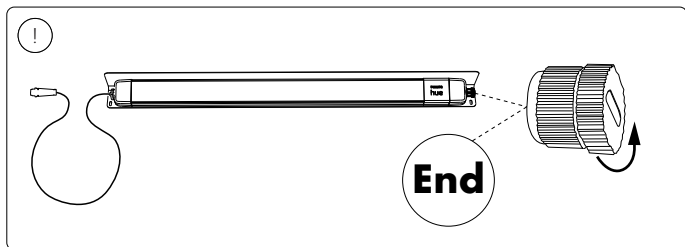
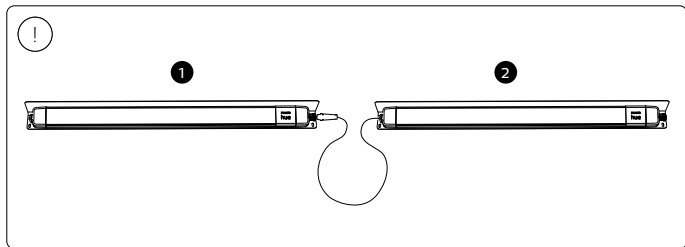
2a

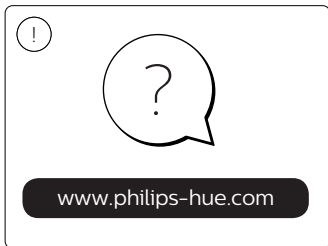
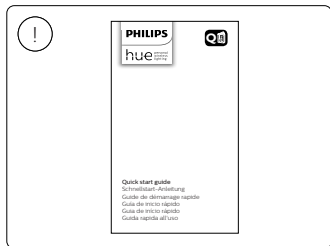










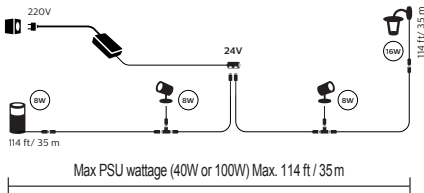




- EN** Use only with Philips Hue 24V **SELV** IP67 LED power supply!
- DE** Verwendung nur mit Philips Hue 24V **SELV** IP67 LED-Stromversorgung!
- FR** Utiliser uniquement avec l'alimentation LED Philips Hue 24V **SELV** IP67!
- ES** Se utiliza solo con la fuente de alimentación LED Philips Hue SELV 24V **IP67**!
- PT** Utilize apenas com fonte de alimentação LED SELV Philips Hue de 24V **IP67**!
- IT** Da utilizzare solo con un alimentatore LED Philips Hue 24V **IP67**!



### Philips Hue Low-volt system (24V)





Signify  
I.B.R.S. / C.C.R.I. Numéro 10461  
5600 VB Eindhoven,  
the Netherlands  
☎00800-74454775

© 2021 Signify Holding  
All rights reserved

[www.philips-hue.com](http://www.philips-hue.com)

17466/\*\*/P7  
4404 029 13352  
Last update: 05/2021