

# PHILIPS

Starter kit: 2 E27 smart bulbs (800) + dimmer switch

Hue White ambiance

Up to 800 lumens\*

Warm-to-cool white light

Instant control via Bluetooth

Hue Bridge included



8718699766979



## Easy smart lighting

Get started with the Philips Hue Light Recipe Kit to help you relax, read, concentrate, or energize. Control instantly via the App, voice or the dimmer switch. Or pair with a Hue Bridge to unlock the full suite of features.

### Limitless possibilities

- Get in the mood with warm to cool white smart lights
- Away-from-home smart light control
- Enjoy the right smart lighting for daily tasks
- Smart home automation hub: Hue Bridge
- Control lights with your voice

### Easy smart lighting

- Control lights with your voice\*

# Highlights

## Get in the mood



Use over 50,000 shades of warm to cool white light to put you in the mood to work, play, or relax • no matter what time of day it is. Start your morning off on the right foot with cool, energizing bright white light, or settle down for the night with golden tones.

## Away-from-home control



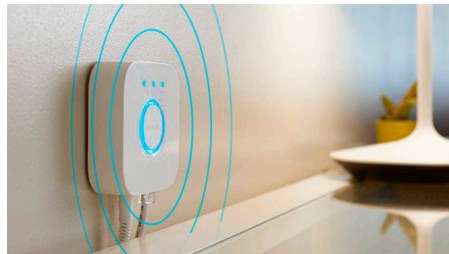
Connect your smart lights to the Hue Bridge and download the Hue app to ensure that your home is well lit no matter where you are. Set light routines in the app to turn your lights on at a certain time, mimicking your presence to give you peace of mind.

## Smart lighting for daily tasks



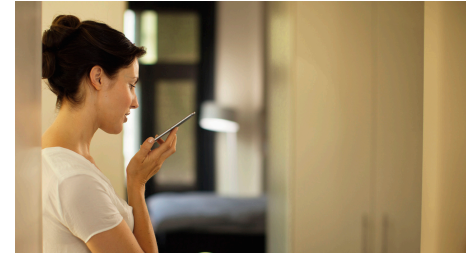
Make your day easier with four preset light scenes that have been handcrafted for your daily tasks. Two cool-toned scenes, Energize and Concentrate, help you get going in the morning and keep your focus, while the warmer scenes of Read and Relax help you enjoy a good book and a rested mind.

## The Hue Bridge



The Hue Bridge is an essential component to a personal Philips Hue smart lighting system. It is the brains of the operation, communicating with both your smart light bulbs and the Hue app to ensure that everything works together. It also enables smart home automation features like scheduling routines and timers.

## Control with your voice



When connected to the Hue Bridge, you can pair your lights with Alexa, Apple HomeKit, and the Google Assistant and control your lights using just your voice. Simple voice commands let you turn your lights on and off, dim or brighten your lights, and even set a light scene.

## Control lights with your voice\*



Philips Hue works with Amazon Alexa and the Google Assistant when paired with a compatible Google Nest or Amazon Echo device. Simple voice commands allow you to control multiple lights in a room or just a single lamp.

# Specifications

## Bulb dimensions

- Dimensions (WxHxD): 60x110

## Design and finishing

- Color: White

## Environmental

- Operational humidity: 5% <H<95% (non condensing)
- Operational temperature: -20°C to 45°C

**Extra feature/accessory incl.**

- Dimmable with Hue app and switch: Yes

**Guarantee**

- 2 years: Yes

**Light characteristics**

- Color rendering index (CRI): 80

**Packaging information**

- EAN: 8718699766979

**Service**

- Warranty: 2 year(s)

**Technical specifications**

- Lumen output at 4000K: 806 lumen
- Weight: 72
- Bulb technology: LED
- Lumen output at 2700K: 570 lumen

**The bridge**

- Frequency band: 2400–2483.5 MHz
- Height: 26 mm
- Length X Width: 88 x 88 mm
- Max. number of accessories: 12
- Max. number of bulbs: 50
- Mounting options: Desktop, Wall
- Power adapter: 100–240 V AC / 50–60Hz
- Power consumption: 250mA max

**The bulb**

- Brightness: 800
- Color temperature: 2200K–6500K
- Diameter: 60 mm
- Fitting: E27
- Form factor: A60
- Height: 110 mm
- Input voltage: 220V–240V
- Lifetime: 25,000 hour(s)
- Light output: Warm to cool white light
- Lumen output: 806 lm @ 4000K
- Max. operation power: 8.5 W
- Max. standby power: 0.5 W
- Number of switching cycles: 50,000
- Power factor: >0.5
- Rated lifetime: 25,000 hour(s)
- Software upgradable: when connected to Hue bridge
- Start up: Instant 100% light output
- Wattage: 8.5 W
- Wattage equivalent: 60 W
- Communication protocol: Bluetooth and Zigbee
- Deep dimmable: Yes
- Software upgradable: When connected to Bluetooth App or Hue Bridge

**The switch**

- Batteries included: 1 x CR2450
- Frequency band: 2400 – 2483.5 MHz
- IP rating: 20
- Lifetime: 50.000 clicks
- Max. lights per switch: 10 if not linked to Hue bridge
- Minimal battery lifetime: 3 year(s)
- Mounting options: wall, freestanding
- Special features: Not applicable
- Switch depth: 11 mm
- Switch height: 92 mm
- Switch width: 35 mm
- Wall plate depth: 14 mm
- Wall plate height: 115 mm
- Wall plate width: 70 mm
- Weight including wall plate: 67 g
- Weight of switch: 37 g
- Zigbee Light link: IEEE 802.15.4 Protocol
- Minimal range indoor: 500 inch

**What's in the box**

- Bridge: 1
- Ethernet network cable: 1
- Hue bulbs: 2
- Hue dimmer switch: 1
- Power adapter: 1

### What's supported

- HomeKit compatible: Yes
- Philips Hue App: IOS 14 and above, Android 10.0 and above
- Voice assistants: Amazon Alexa, Google Assistant, Apple HomeKit (Via Hue Bridge), Microsoft Cortana (Via Hue Bridge)



Issue date: 2023-11-08  
Version: 0.114

© 2023 Signify Holding. All rights reserved. Signify does not give any representation or warranty as to the accuracy or completeness of the information included herein and shall not be liable for any action in reliance thereon. The information presented in this document is not intended as any commercial offer and does not form part of any quotation or contract, unless otherwise agreed by Signify. Philips and the Philips Shield Emblem are registered trademarks of Koninklijke Philips N.V.

[www.lighting.philips.com](http://www.lighting.philips.com)