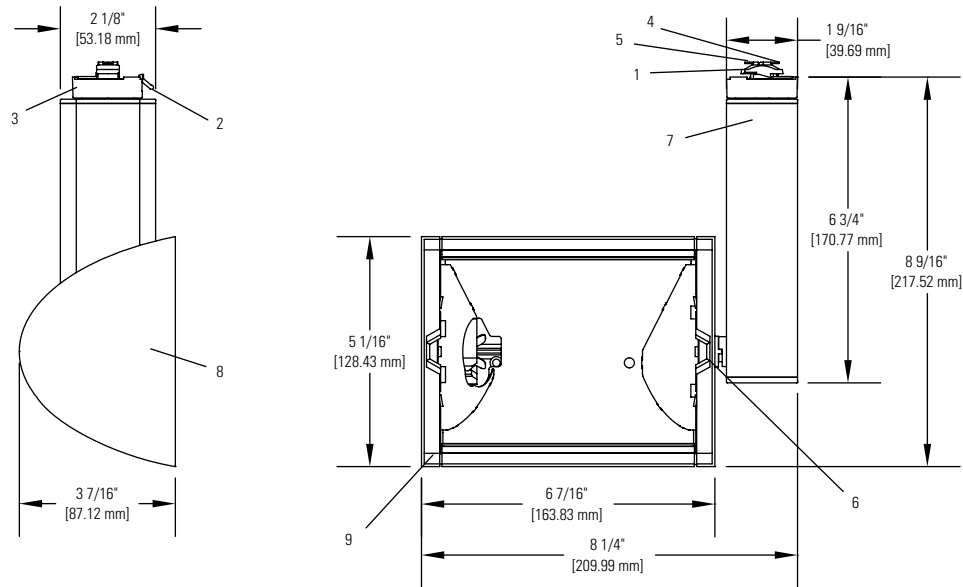


Project:	Catalog No:	Mfg:
Location:	Fixture Type:	Qty:
Notes:		Lamps:



Ordering Information

Catalog No.	Finish	Mounting	Lamping
81F39T6AL 81F39T6BK 81F39T6WH	Matte Aluminum Matte Black Matte White	All Lytespan Track systems, Basic, Advent and Radius Track systems only. Not compatible with ProSpec track system.	39W T6 G12 base Ceramic Metal Halide Not Included
81F39T6SPCAL 81F39T6SPCWH	Matte Aluminum Specular Reflector Matte White Specular Reflector		

Features

- Track attachment fitting:** Molded polycarbonate. Integral color in gray, black or white. Rotates into track and locks into place with the use of push tab.
- Push Tab:** Molded polycarbonate. Locks and detaches unit.
- Track Adaptor Housing:** Die-cast aluminum
- Movable Contact:** Solid Brass. Extends for connection to 2nd circuit in Advent track.
- Ground Contact:** Solid brass
- Pivot Mounts:** Allows for 350° horizontal and 0-90° vertical rotation in both directions with tensioned mounts for controlled aim.
- Ballast Housing:** Extruded aluminum housing with die-cast aluminum covers.
- Lamp Housing:** Extruded aluminum housing with two die-cast end plates.
- Protective Glass:** .125" tempered glass

Accessories

Vizor **81VZ6BK**

Finish

All Painted finishes are baked powder or enamel.

Electrical

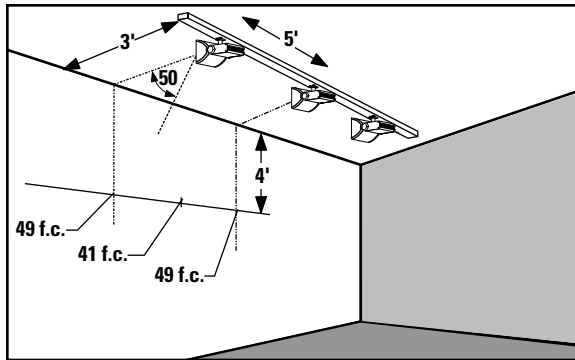
Metal Halide Electronic Ballast
.40A Maximum input current
45W Mmaximum input power
High power factor

Labels

cCSAus Listed, for dry locations only.

Lighting Data – Specular Reflector

Footcandles on wall:



Lamp Information:

39W CDM T6 Single Ended Metal Halide. (Philips Elite)

Initial Lumens: 3300

CRI: 84, 4200K

Rated Avg. Life: 9,000 - 15,000 hrs.

Example: With track located 3' from wall and multiple units spaced 5' on center and aimed 50° from horizontal, the illumination on wall 4' from ceiling will be 49 f.c. beneath units and 41 f.c. between units.

Footcandles on Wall

Track 3 Feet From Wall

Single Unit

		0' 1' 2' 3' 4' 5'						
Distance From Ceiling		Beam Center						
	1'	112	89	27	6	2	1	
	2'	97	93	38	11	3	1	
	3'	70	72	37	13	5	2	
	4'	43	46	29	13	5	2	
	5'	26	28	21	12	6	3	
	6'	16	17	15	10	5	3	
	7'	10	11	10	7	5	2	
	8'	7	8	7	6	4	2	
	9'	5	5	5	4	3	2	

Multiple Units

4'			5'			6'		
114	54	114	112	27	112	112	13	112
103	78	103	99	40	99	97	22	97
79	76	79	74	46	74	71	27	71
54	60	54	49	41	49	45	27	45
37	44	37	32	33	32	29	24	29
27	32	27	22	25	22	19	20	18
20	236	20	16	19	16	13	15	13
15	17	15	12	14	12	10	12	10
12	13	12	9	11	9	8	9	8

Footcandles are average and rounded off and data for multiple units are based on a minimum of five units.

For standard reflector multiply footcandles by 0.73

For warming reflector multiply footcandles by 0.82

For Philips Elite T6 lamp multiply footcandles by 1.1



©2015 Koninklijke Philips N.V. All rights reserved.
Philips reserves the right to make changes in specifications and/or to discontinue any product at any time without notice or obligation and will not be liable for any consequences resulting from the use of this publication.
philips.com/luminaires

81F39T6 09/15

Philips Lighting,
North America Corporation
200 Franklin Square Drive,
Somerset, NJ 08873
Tel. 855-486-2216

Imported by: Philips Lighting,
A division of Philips Electronics Ltd.
281 Hillmount Rd, Markham, ON,
Canada L6C 2S3
Tel. 800-668-9008