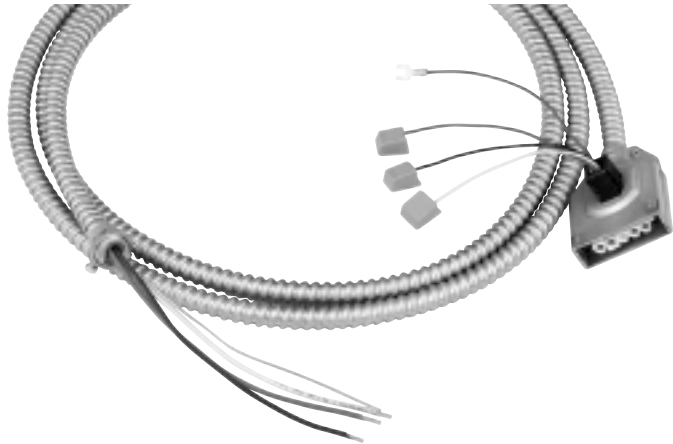


REDDY-CONNECT DISTRIBUTION CABLE "D" SERIES



SAMPLE CATALOG NUMBER: RD-27-1D-09

RD	
<u>DESIGNATOR</u> RD – Reddy-Connect Distribution Cable	<u>WIRING CONFIGURATION</u> 1D – 1 circuit 2D – 2 circuit 3D – 3 circuit ND – 2 circuit, 2 neutral
<u>VOLTAGE</u> 12 – 120v 27 – 277v 34 – 347v	<u>LENGTH</u> 09 – 9' 15 – 15'

APPLICATION

- "D" series (RD) Reddy-Connect distribution cable distributes the lighting circuit(s) to the first lighting luminaire on the flexible wiring system from a hardwired system.
- It is quickly & easily field-installed by plugging ballast leads into "Poke Home" connectors.
- No wirenuts required.
- Snaps into standard 1/2" knockout.
- Reddy-Connect distribution cables add a maximum of 7/8" to luminaire height.
- Available in 1, 2 or 3 circuits.

ELECTRICAL

- UL/cUL listed.
- IBEW labeled.
- Suitable for use in return air spaces above suspended ceilings in accordance with 1999 N.E.C. 300-22 (c) and 604-3.
- Meets UL requirements for making or breaking under load.
- Pin and socket contacts.

CONSTRUCTION

- Rated for 20 amp 120 and 277 volt lighting circuits.
- Connector polarized and color-coded for voltage function to prevent mismatching of components.
- #12 AWG THHN stranded copper, 600 volt.
- Pre-wired with female (power out) connector and fixture taps that are #18 AWG TFN solid copper conductors, connected to "Poke-Home" connectors.
- Opposite end has 6" leads and 1/2" K.O. connector for mounting to a junction box in a standard 1/2" (7/8" diameter) knockout.

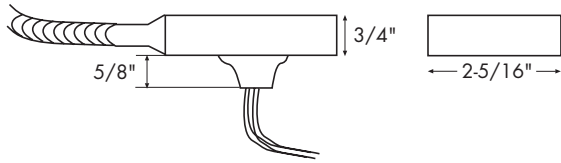
Job Name:

Catalog Number:

Type:

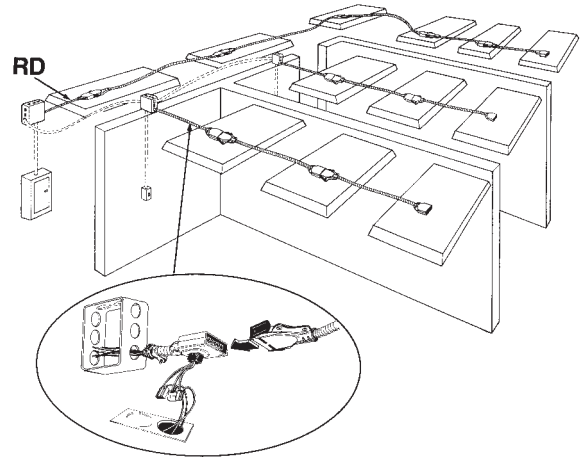
Notes:

DIMENSIONS

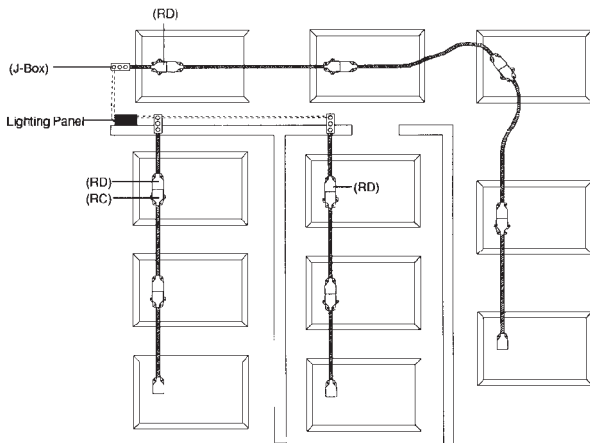


*When installed, RD cable adds 7/8" to luminaire height.

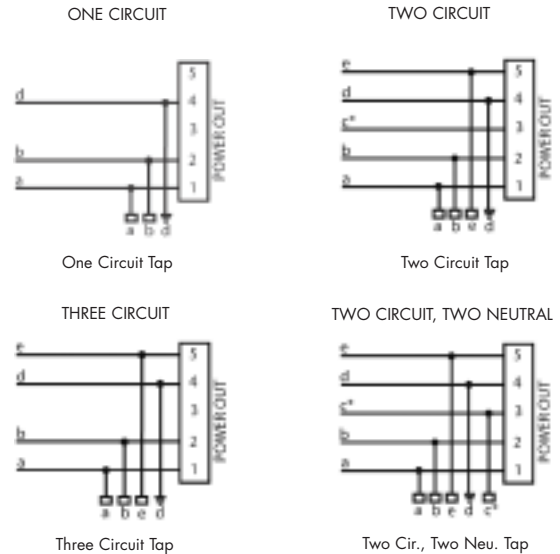
APPLICATION



WIRING



WIRING DIAGRAM



TAPS	LEADS
a	black
b	white
c	blue
d	red
e	green

WIRING COLOR LEGEND		
	120v	277v
a	black	orange
b	white	white
c	blue*	yellow
d	ground	ground
e	red	brown

(Typical)
 • Black lead to inboard ballast lead.
 • Red lead to inboard ballast lead.
 • White lead to white ballast leads.

*Exception: In Two Circuit, Two Neutral Application, wire c will be grey or white with a black stripe.