

INSTALLATION INSTRUCTIONS

FOR WS (WALL MOUNT, SURFACE CONDUIT) OPTION

100 SERIES PERFORMANCE SCONCES

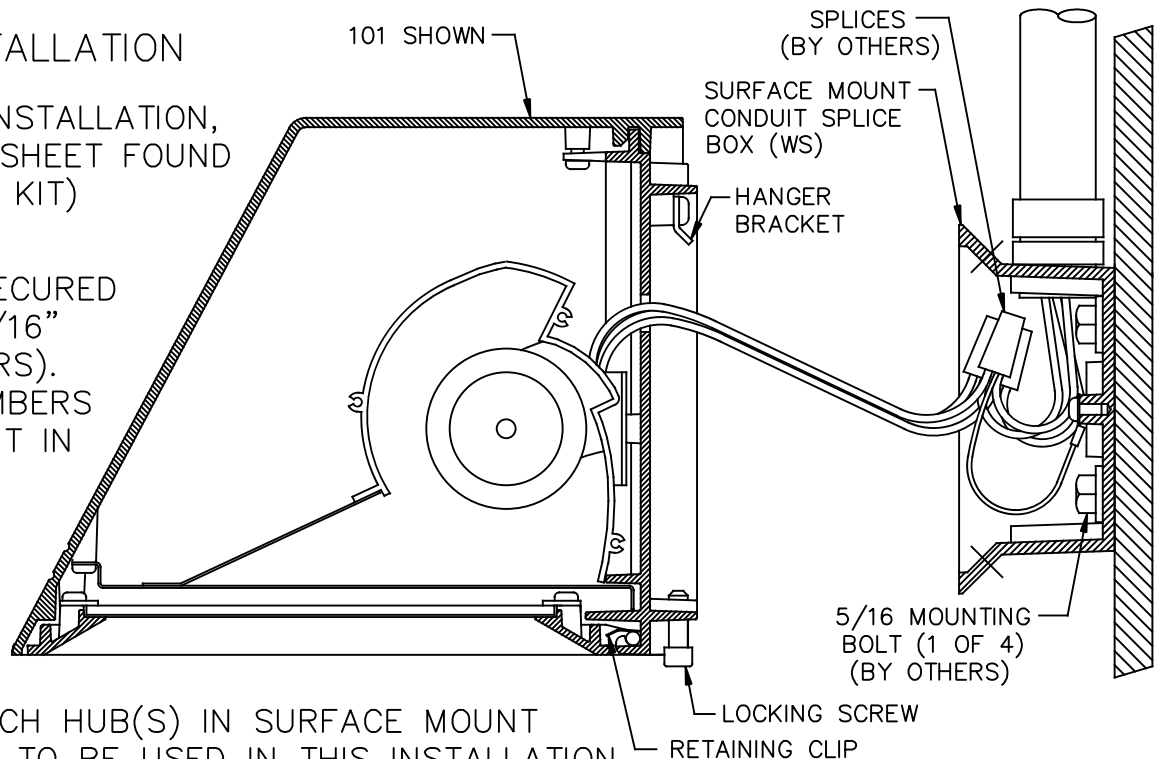
IMPORTANT: READ ALL INSTRUCTIONS BEFORE PERFORMING ANY WORK.
BE SURE ALL POWER IS OFF PRIOR TO INSTALLING LUMINAIRE.

WARNING: LUMINAIRE MUST BE GROUNDED IN ACCORDANCE WITH
APPROPRIATE CODES. FAILURE TO DO SO MAY RESULT IN
SERIOUS INJURY.

STANDARD INSTALLATION

(FOR 5° UP-TILT INSTALLATION,
SEE INSTRUCTION SHEET FOUND
IN WS 5° UP-TILT KIT)

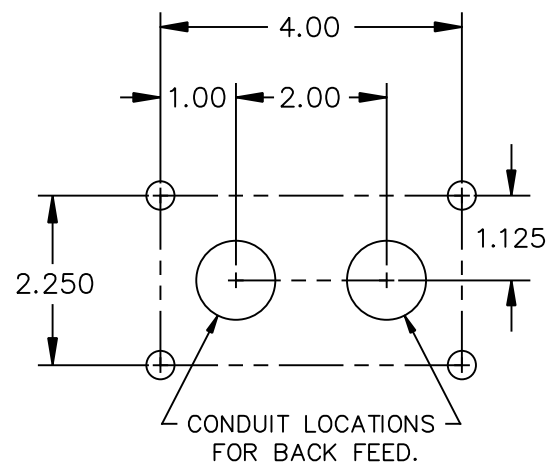
NOTE:
SPLICE BOX IS SECURED
TO WALL WITH 5/16" BOLTS (BY OTHERS).
STRUCTURAL MEMBERS
MUST BE PRESENT IN
WALL TO ACCEPT
BOLTS.



1. DETERMINE WHICH HUB(S) IN SURFACE MOUNT
SPLICE BOX ARE TO BE USED IN THIS INSTALLATION.
INSTALL AND SEAL ELECTRICAL FITTING(S) IN HUB(S).
INSTALL AND SEAL PLUG(S) IN UNUSED HUB(S).
APPLY SEALANT TO THE TWO UNUSED HOLES IN
THE TOP ANGLED WALL OF THE SPLICE BOX.
INSTALL CONDUIT SECTION(S) INTO FITTINGS AS
REQUIRED.

2. DETERMINE MOUNTING LOCATION OF SPLICE BOX.
APPLY A BEAD OF SEALANT AROUND EACH
MOUNTING HOLE ON THE OUTSIDE OF THE BOX.
FOR INSTALLATIONS WHERE CONDUIT ENTERS
THROUGH THE BACK OF THE SPLICE BOX,
APPLY A BEAD OF SEALANT ON THE OUTSIDE
OF THE BOX AROUND THE CONDUIT HOLE USED.
SECURE BOX TO WALL WITH 5/16" BOLTS
(BY OTHERS) MAKING SURE BOX IS LEVEL.

3. COMPLETE CONDUIT INSTALLATION AND ROUTE
SUPPLY WIRES INTO SPLICE BOX.



MOUNTING BOLT PATTERN

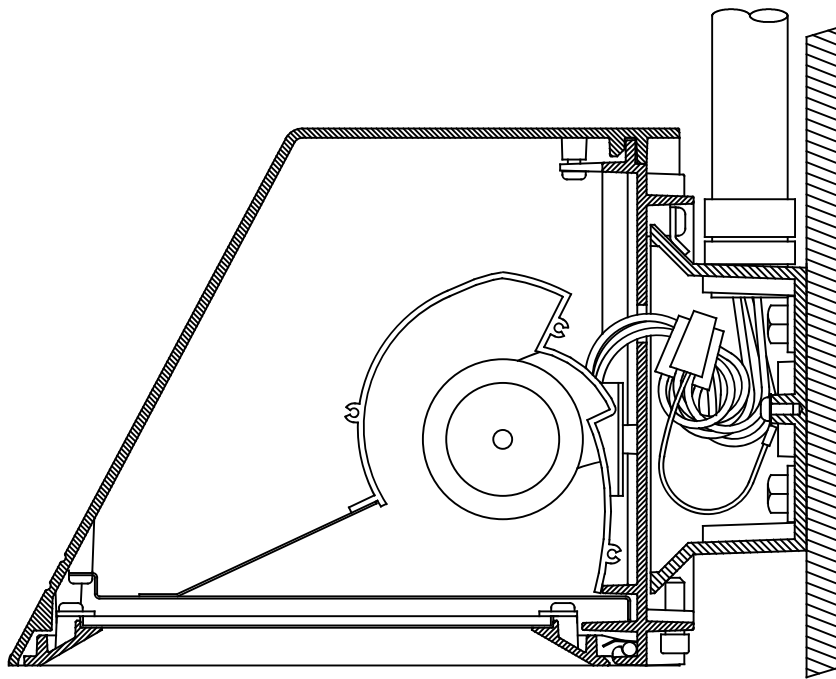
INSTALLATION INSTRUCTIONS

FOR WS (WALL MOUNT, SURFACE CONDUIT) OPTION

100 SERIES PERFORMANCE SCONCES

4. DISCARD MOUNTING BRACKET SUPPLIED WITH FIXTURE.
5. MAKE ELECTRICAL CONNECTIONS. FIXTURE LINE TO SUPPLY LINE, COMMON TO COMMON AND GROUND TO GROUND INCLUDING SPLICE BOX GROUND.
6. PLACE SPLICES AND EXCESS WIRE IN SPLICE BOX. CAREFULLY ENGAGE HANGER BRACKET TO SPLICE BOX BEING CAREFULL NOT TO PINCH WIRES. ALLOW FIXTURE TO REST AGAINST BOX. TIGHTEN LOCKING SCREWS.
7. UNSCREW LENS FRAME SCREWS. SLOWLY OPEN FRAME UNTILL IT HANGS FREE. INSTALL LAMP. CLOSE AND SECURE FRAME BEING CAREFULL NOT TO OVERTIGHTEN THE SCREWS.

NOTE: LENS FRAME ASSEMBLY IS REMOVABLE BY OPENING PARTIALLY, COMpressing RETAINING CLIPS WITH HINGE END OF FRAME AND PULLING FORWARD.



FIXTURE INSTALLED
ON WS OPTION

