

Smart lighting for schools that are a class above.

Hands up who thinks their school would benefit from a smart lighting system? Use this checklist to assess your priorities and see how smart lighting can transform your school into a state-of-the-art and inspirational learning environment.

What are your top priorities for your school?

Lesson 1: how to create classrooms that are more comfortable to learn in.

Creating learning environments in which teachers and pupils can excel is the first step towards achieving better results. And lighting is a simple, yet important way to improve classroom comfort and help stimulate and engage pupils. With the Interact Pro app teachers can adjust light levels in the classroom to suit different learning activities.

- ✓ Light can be tailored to suit the learning task or the time of day.
- ✓ Increase light levels to invigorate pupils when they need to be more active, supporting a fresh start to the day (morning) or afternoon (after lunch break).
- ✓ Decrease light levels to create a relaxing environment during breaks or quiet time.



Lesson 2: how to get more out of your floor space with multipurpose work areas.

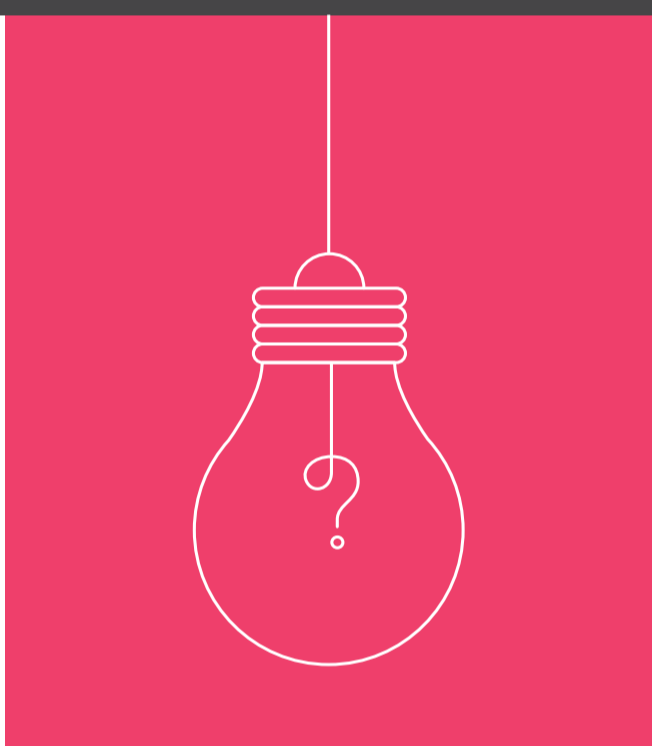
Interact Pro makes it easy to match your lighting to the different ways you use space with lighting profiles.

- ✓ Create adaptable multipurpose spaces, rooms and areas.
- ✓ Set the scene instantly for every kind of activity from focussed tasks and quiet reading time to creative pursuits and lively group work.
- ✓ Easily change your lighting when space usage changes.

Lesson 3: how to stop lighting empty spaces.

You'd be amazed at how much energy your school can save when lights are on only when they're needed – and dimmed or off when they're not. Interact Pro software lets you use automation and sensors to minimize energy usage.

- ✓ Tailor lighting to your school schedules, timetables or between classes foot traffic using automated lighting profiles and dimming zones.
- ✓ Use motion sensors to activate the right light levels instantly when people are present.
- ✓ Use daylight sensors to reduce light levels when natural light is strong.



Lesson 4: how to stop worrying whether someone turned the lights off.

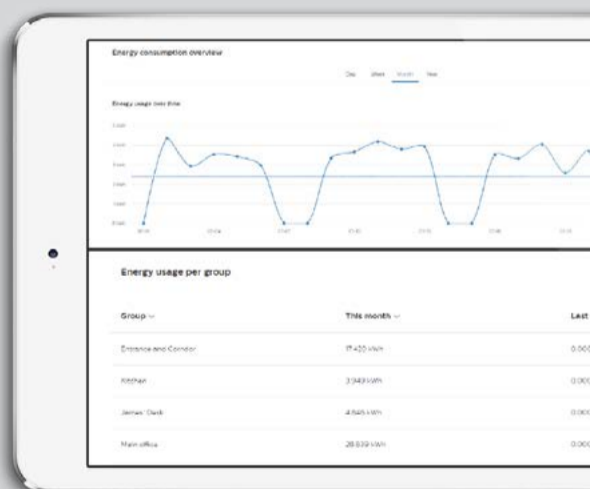
With a smart lighting system, there's no need to manually turn lights on and off. You can set all the lights in your building to switch off or dim at a certain time – or schedule specific zones to suit the usage of the space.

- ✓ Lights dim or turn off automatically in empty classrooms, corridors and bathrooms.
- ✓ Schedule lights to stay on after hours in zones where students or teachers are still working.
- ✓ Lights activate instantly when sensors detect movement.

Lesson 5: how to monitor your lighting's impact on your energy footprint.

Take control of your lighting via the Interact Pro dashboard. You or your installer can monitor lighting usage and energy consumption to further optimize your lighting as your school's needs change.

- ✓ Identify areas using a lot of light and adjust settings to save energy.
- ✓ Optimize lighting schedules where lighting usage seems out of sync with usage.
- ✓ Meet sustainability and energy rebate program targets.



If you identify with the priorities above, ask your installer about Interact Pro. It's an intuitive app and dashboard that works with Philips Interact Ready lighting to bring the cost-saving power of IoT to schools. It's a smart and energy-conscious choice for any school that wants to give pupils the best possible education, with light that enhances learning, improves results and makes everyone feel better.

Installation is fast, easy and cable-free

