

# PHILIPS

## LED tubes

# Low-performing or long-lasting?

Real professionals choose the new Philips MASTER Value LEDtube T8



The new **Philips MASTER Value LEDtube T8** is the right choice for all professionals, who want to easily and cost-effectively upgrade existing, conventional lighting tubes with LED tubes. Low energy consumption and little maintenance make it the perfect choice for all generic lighting applications!

**REAL PROs**  
**REAL QUALITY**

## Philips MASTER Value LEDtube T8 – features and benefits

- ✓ Uniform light effect
- ✓ Robust construction
- ✓ Fits in well with conventional technology
- ✓ Fast and easy installation
- ✓ Simple plug and play retrofit solution
- ✓ High level energy efficiency

## Applications

- ✓ Office
- ✓ Retail
- ✓ Industrial buildings and warehouses
- ✓ Parking

## Philips LED tubes – benefits in the spotlight

- ✓ Extremely cost-effective – LED tubes normally pay for themselves within the first year
- ✓ Up to 65% more energy efficient than conventional TL-D (fluorescent) lamps
- ✓ Up to 3× longer lasting performance than conventional TL-D (fluorescent) lighting tubes
- ✓ Retrofit to existing T8 lamps on EM ballast installations
- ✓ Affordable proposition – suitable for small and medium sized businesses
- ✓ Immediate, 100% lumen output – no flickering or buzzing
- ✓ 100% mercury-free
- ✓ Full safety features and EM Protector safety device
- ✓ Guarantee of up to five years\*
- ✓ Easily find the right product for every area of application with the [product finder](#) and impress your customers with your expertise in all kinds of LED lighting solutions.



Click the link, scan the code or visit [www.productfinder.lighting.philips.com](http://www.productfinder.lighting.philips.com)



\* For warranty conditions, visit [www.lighting.philips.com/main/support/support/warranty](http://www.lighting.philips.com/main/support/support/warranty)

## Big consumption or big savings?

LED tubes are up to 65% more efficient than TL-D (fluorescent) tubes, meaning you maintain consistently higher light quality while saving energy costs.

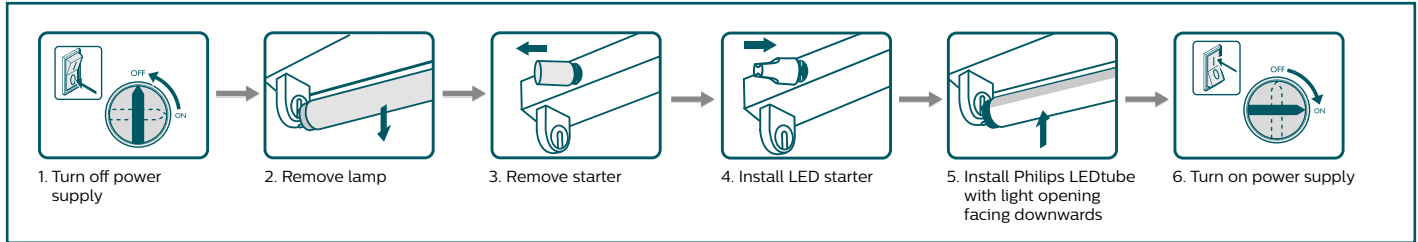
\* 14W ballast lost assumption for 58W fluorescent lamp installed on an EM ballast.  
\*\* Example, calculation based on: energy cost 0.20€/kW, 4,000 burning hours per year.

LED compared with a conventional solution	58W fluorescent lamp	LEDtube MASTER Value T8 1500 mm UO
Lamp wattage	58W	24W
Use of energy/annually	288 kW*	96 kW
Energy costs/annually	57,60 €*	19,20 €
<b>Energy cost savings/annually*</b>		<b>38,40 €</b>

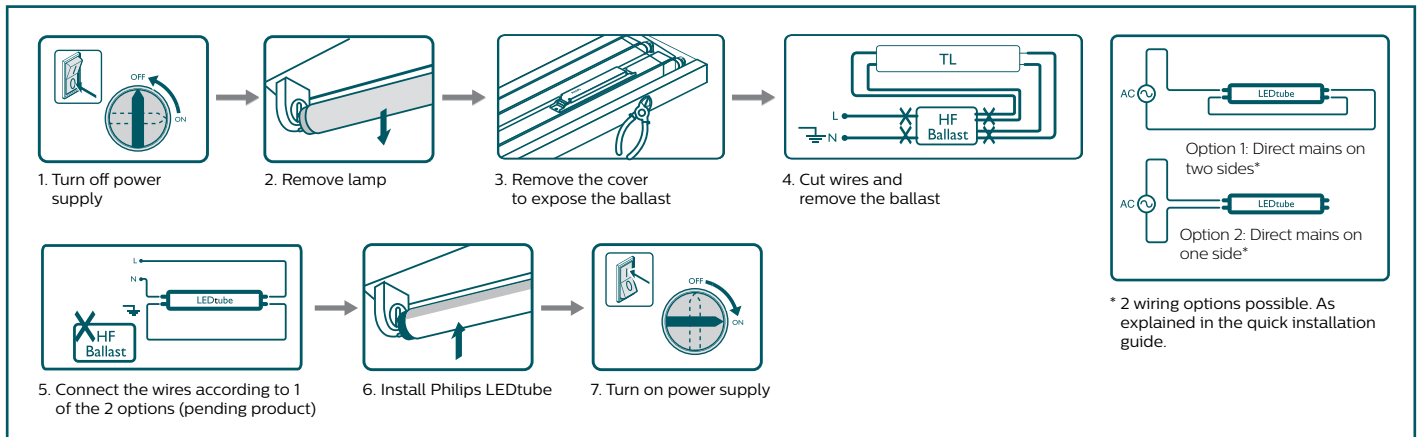
## 100% safe installation – easier than ever before

LED tubes provide the fastest and simplest way to convert existing luminaires to LED technology. The installation is 100% safe and totally unproblematic, due to lamp-for-lamp replacement.

### Installation instructions for Electronic Ballast (EM)



### Installation instructions for direct mains connection



## Specifications

Product name	Power (W)	Light output (lm)	Color temperature (K)	Dim-mable	Beam angle	Service life (h, at ta=50; L70)		Product length/diameter (mm)	Packs per outer box	Philips order no.
<b>Master Value LEDtube T8</b>										<b>8718699</b>
MAS LEDtube VLE 1500mm UO 24W 830 T8	24	3,400	3,000					1,500/28		64703200
MAS LEDtube VLE 1500mm UO 24W 840 T8	24	3,700	4,000					1,500/28		64705600
MAS LEDtube VLE 1500mm UO 24W 865 T8	24	3,700	6,500					1,500/28		64707000
MAS LEDtube VLE 1200mm UO 16W 830 T8	16	2,300	3,000					1,200/28		64697400
MAS LEDtube VLE 1200mm UO 16W 840 T8	16	2,500	4,000					1,200/28		64699800
MAS LEDtube VLE 1200mm UO 16W 865 T8	16	2,500	6,500					1,200/28		64701800
MAS LEDtube VLE 1500mm HO 20W 830 T8	20	2,900	3,000					1,500/28		64691200
MAS LEDtube VLE 1500mm HO 20W 840 T8	20	3,100	4,000	no	240°	50,000	A**	1,500/28	10	64693600
MAS LEDtube VLE 1500mm HO 20W 865 T8	20	3,100	6,500					1,500/28		64695000
MAS LEDtube VLE 1200mm HO 14W 830 T8	14	2,000	3,000					1,200/28		64685100
MAS LEDtube VLE 1200mm HO 14W 840 T8	14	2,100	4,000					1,200/28		64687500
MAS LEDtube VLE 1200mm HO 14W 865 T8	14	2,100	6,500					1,200/28		64689900
MAS LEDtube VLE 600mm HO 8W 830 T8	8	1,000	3,000					600/28		64679000
MAS LEDtube VLE 600mm HO 8W 840 T8	8	1,050	4,000					600/28		64681300
MAS LEDtube VLE 600mm HO 8W 865 T8	8	1,050	6,500					600/28		64683700

