



PHILIPS

MASTER LEDtube

T8 food



Better
looking
food,
**lower
energy
bill**



Vibrant colors for your food displays

Philips has fine-tuned the light spectrum of its advanced LED technologies to emphasize the deep red colors of **meat and poultry**, the vibrant reds of many **fruits**, and to add warm color tones when displaying **breads** and other foods. The resulting MASTER LEDtube T8 food will boost sales by **making food displays look fresh and appealing** while **reducing glare**.

LED tubes are the **fastest** and **easiest way** to upgrade to energy efficient LED lighting. They're a solid investment for supermarket purchasing managers, and give a competitive advantage to display cabinet manufacturers.



supermarkets



butchers

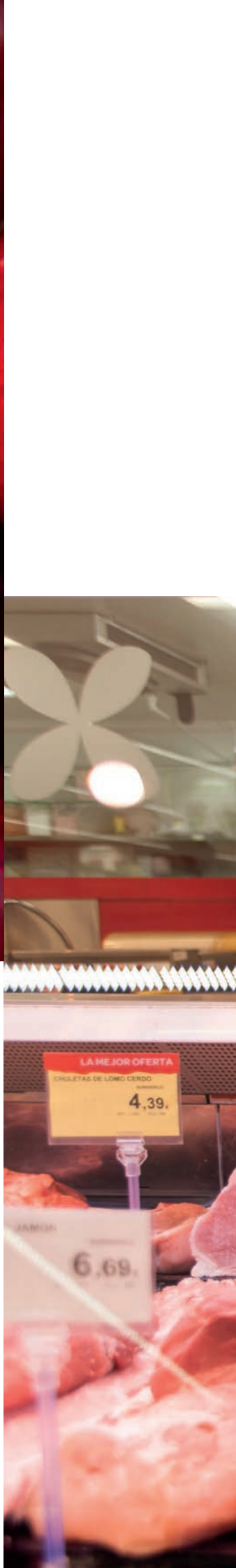


bakers



greengrocers





lower running costs

Running costs of the 900, 1200, and 1500 mm (3ft, 4ft and 5ft) LED tubes are significantly lower than the TL-D fluorescents they replace. The LED tubes use less than half the energy of fluorescents, so they give off less heat and keep foods fresh longer.

Calculate your
own **savings** on
www.philips.com/t8savingscalculator



With LED tubes having less than half the energy costs of fluorescents, they pay for themselves many times over during their **50,000 hour** lifetime. Lit for 12 hours/day, **repayment time is very attractive**, with lower maintenance and relamping costs as a bonus.





Safe, **hassle-free** installation

InstantFit plug-and-play compatibility with HF ballasts means hassle-free installation – making Philips LEDtubes 100%-safe, one-for-one replacements. Rotating end-caps optimize the light distribution to highlight the food on show with constant, high-quality light.



with **high-performance** LED technology

Light output of the 1500-mm LED tube is for example 1680 lumens for only 20 W dissipation (84 lumens/W), giving an Energy Efficiency Label of A+. Color temperature of the range is 3300 K High Color Rendering Index, 83, enhances the natural colors of the meat in the display.





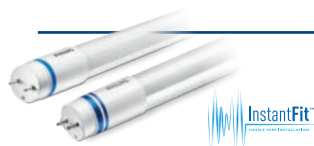
using Philips
excellent
build **quality**
and safety
features

The tubes feature electric pin safety, so there are no hazardous currents or voltages on the cap pin when the other pin is inserted into the fixture. The polycarbonate construction gives excellent heat management, and light output is stable across a wide -20 to +35°C ambient temperature range.

Technical specifications



MASTER LEDtube T8 Food



Product type	LED	Rotatable end cap	Lumen output	Dimmable	Operation	Beam angle	CRI	Color temp.	Lifetime	Energy label	EOC 1 pcs (C)	G13
MASTER LEDtube	W		lm			°		K	Hrs.		8718696	
1200mm 12W833 T8 food	12	Yes	1000	No	EM	160	83	3300	50,000	A+	76393300	Yes
1500mm 20W833 T8 food	20	Yes	1680	No	EM	160	83	3300	50,000	A+	76395700	Yes
900mm 8.5W833 T8 food	8,5	Yes	750	No	EM	160	83	3300	50,000	A+	76391900	Yes
1200mm 16.5W833 T8 food	16,5	Yes	1000	No	HF	160	83	3300	50,000	B	56616900	Yes

i Please refer to the site www.philips.com/ledtube for the latest information about ballast compatibility.

* Dimming a LED tube: please refer to the site www.philips.com/ledtube for the latest update on our InstantFit LED tube/dimming ballast compatibility information.



© 2017 Philips Lighting Holding B.V. All rights reserved. This document contains information relating to Philips Lighting product portfolio. Note that the information provided is subject to change. Philips Lighting does not give any representation or warranty as to the accuracy or completeness of the information included herein and shall not be liable for any action in reliance thereon. The information presented in this document is not intended as any commercial offer and does not form part of any quotation or contract.

Trademarks are the property of Koninklijke Philips N.V., Philips Lighting Holding B.V. or their respective owners.