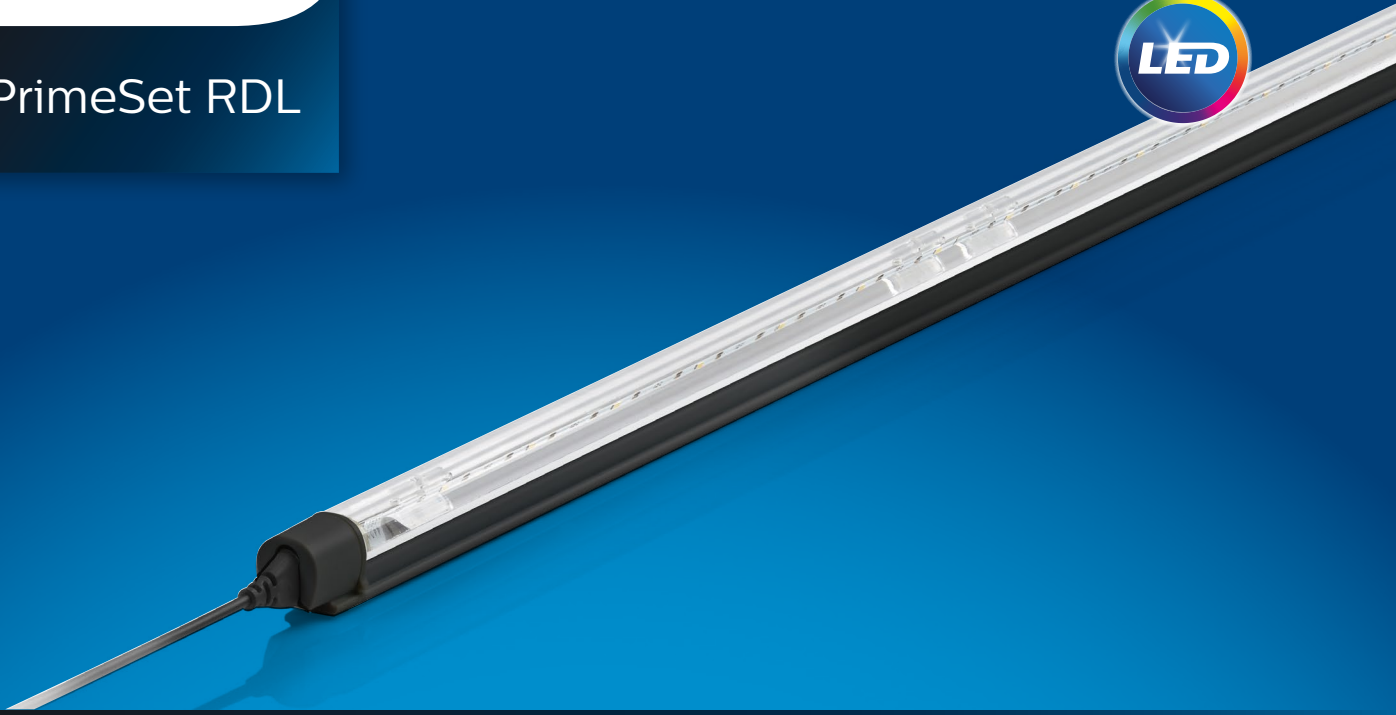


PHILIPS

PrimeSet RDL



Installation Guide

Lighting food.
Brightening faces.

April 2020

Important

Please take the time to read this installation guide before you install the PrimeSet LED display modules and LED power driver.

The guide contains important information and notes regarding the installation and operation.

Warnings

- The installation guide does not supersede local and (inter)national regulations for electrical installations.
- The Philips PrimeSet LED display module and LED power driver must be installed by a professional electrician in accordance with the applicable and appropriate electrical codes and the instructions provided by Philips.
- The Philips PrimeSet LED display module is designed to be connected to a circuit from a class II, SELV power source with energy limited supply. Connection to mains voltage will damage the module.
- Suitable for damp locations.
- For cabinet use only.
- CAUTION – To reduce the risk of fire, do not install in a compartment smaller than 3 in (72.2 mm) wide by 1.5 in (38.1 mm) deep by the length of the luminaire.
- To allow for variance in the installation, it is not recommended to load the power driver beyond 90% of its rated maximum power. The energy consumption of the module is a nominal value, with an estimation of 10% deviation.
- Before installation, maintenance or cleaning, always first switch off or disconnect the power and follow appropriate safety procedures.
- Do not tape the Philips PrimeSet LED display module behind the freezer mullion or doorframe.
- Take care not to damage the existing (heating) wiring in the freezer when drilling the hole for the installation.
- Do not make sharp bends with electrical wires.
- Please note that the colors of the wires of different type of freezer(s) may differ. The position of the (original) ballast may also differ.
- Due to the variety of freezer designs and brands, you may need to use customized brackets to fit the specific freezer type you are using. If you require further support, please contact your local Philips sales organization.
- Risk of fire or electric shock. LED Retrofit Kit installation requires knowledge of refrigerator/freezer electrical systems. If not qualified, do not attempt installation. Contact a qualified electrician.

Cleaning

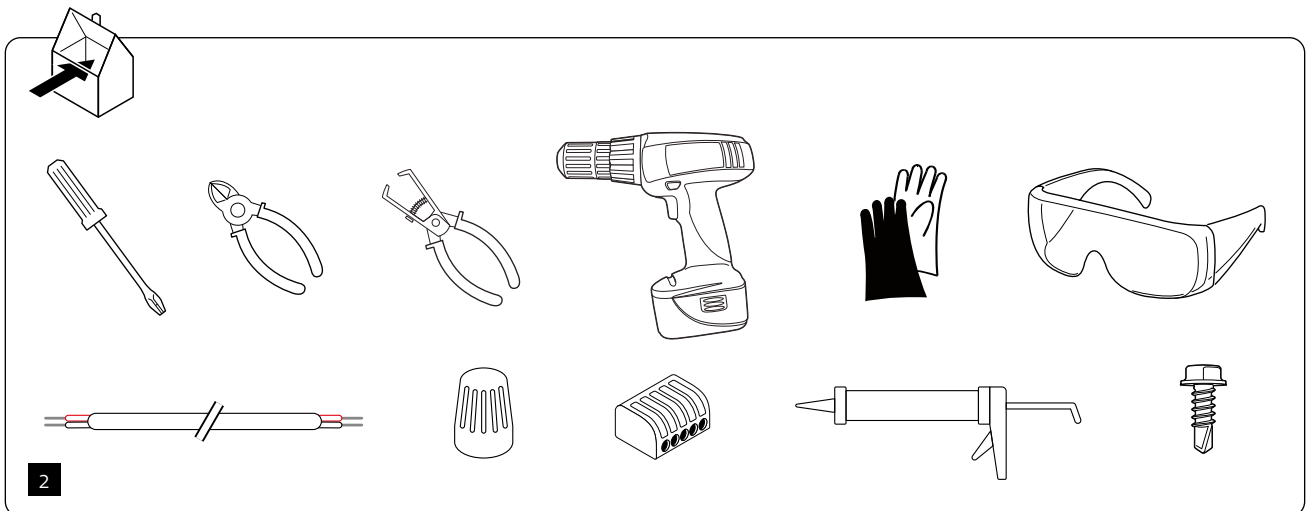
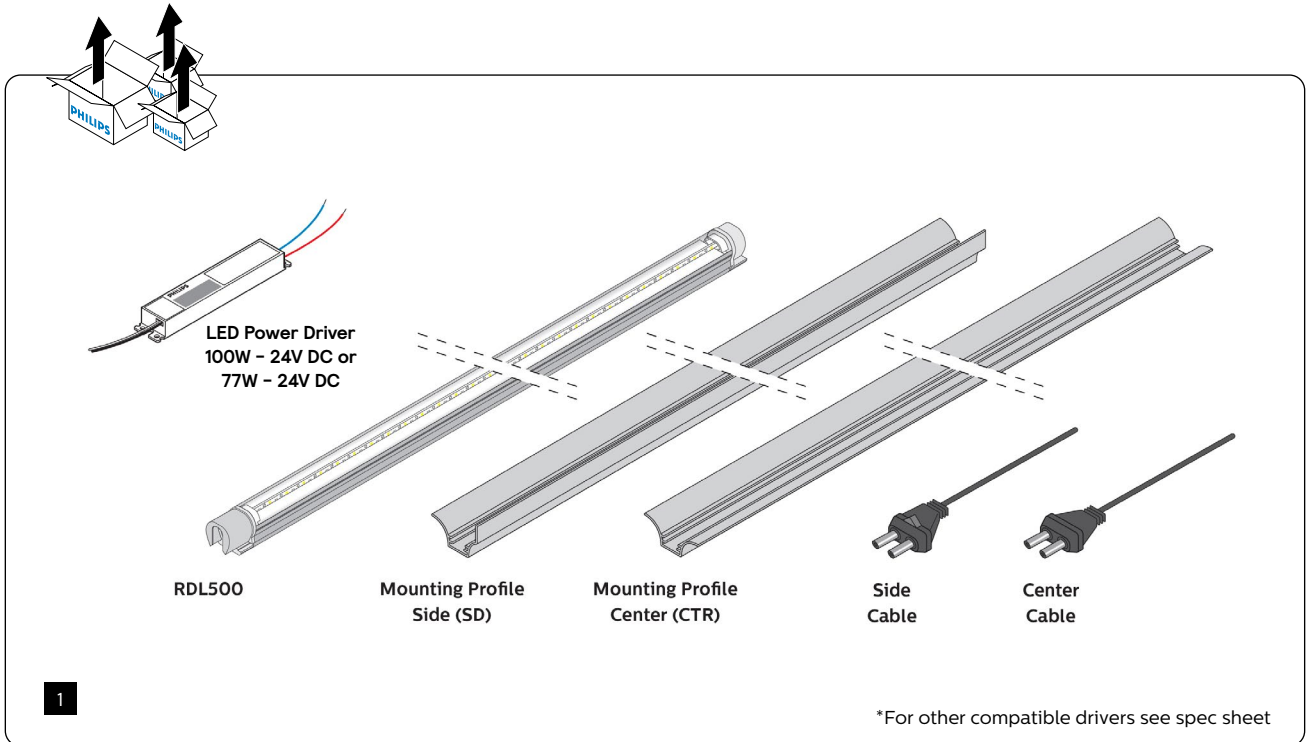
Do not use abrasive cleaners, scouring pads, bleach or cleaners containing bleach because these products can scratch and damage the module.

System disposal

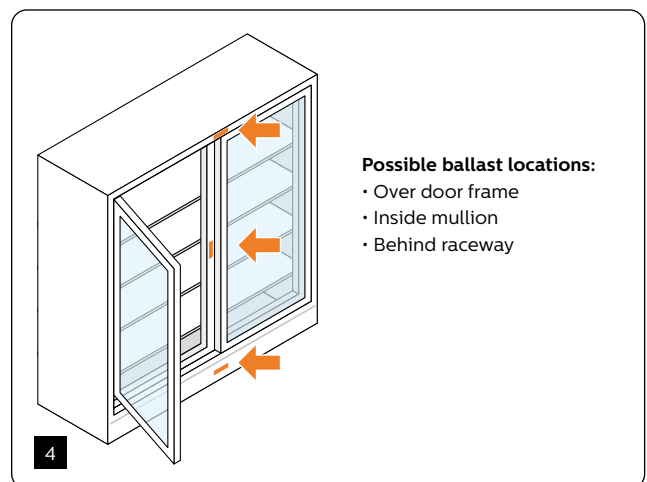
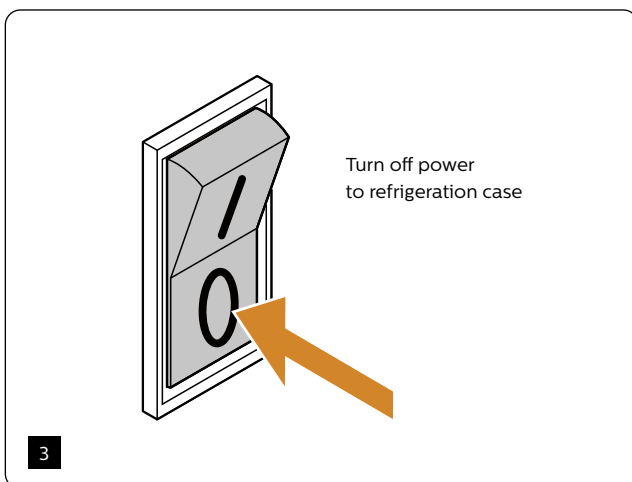
We recommend that the module and its components are disposed of in an appropriate way at the end of their (economic) lifetime. The modules are in effect normal pieces of electronic equipment containing components that are currently not considered to be harmful to the environment. We therefore recommend that these parts are disposed of as normal electronic waste, in accordance with local regulations.

www.philips.com/retaildisplaylighting

Products and tools

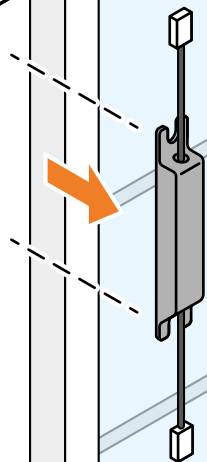


Start



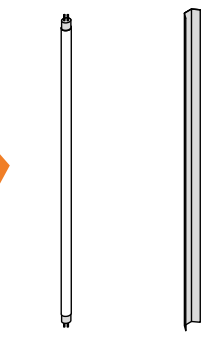
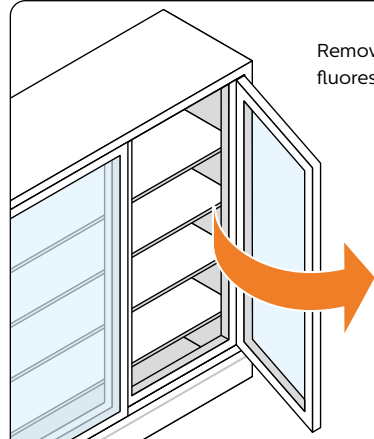
Remove ballast
 Leave and cap existing wires
 where you will not replace with
 LED driver.

Most cases will have more
 than one ballast



5

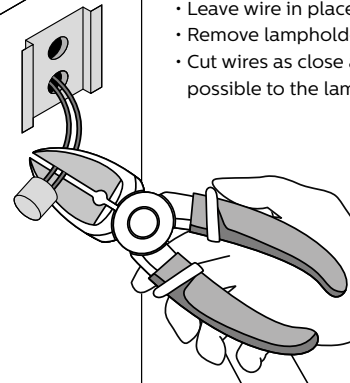
Remove all lamp guards and
 fluorescent tubes from inside case



Fluorescent tubes
 Lamp guards

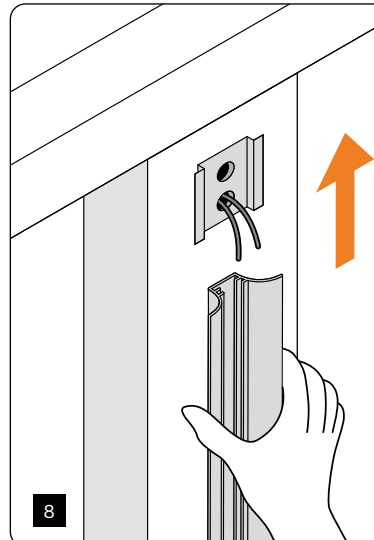
6

- Leave wire in place
- Remove lampholders
- Cut wires as close as possible to the lampholders



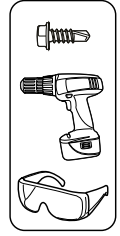
7

- Butt the profile to the lampholder bracket before removing it
- Ensure all profiles are aligned at the same height

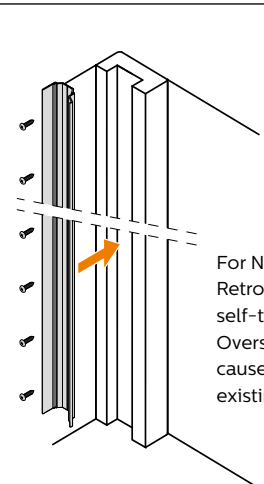


8

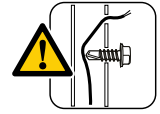
WARNING - Risk of electrical shock. Only those open holes indicated in the photographs and/or drawings may be made or altered as a result of kit installation. Do not leave any other open holes in an enclosure of wiring or electric components.



For North America Retrofit use 6 1/2" self-threading screws. Oversize screws may cause damage to existing wiring.

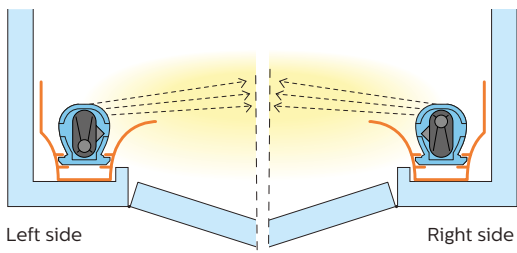


9

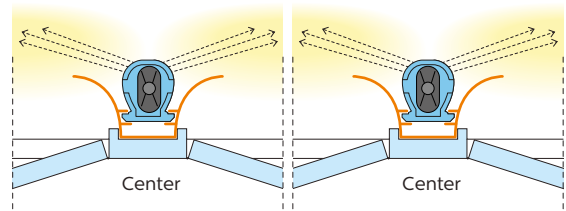


WARNING - Risk of fire or electric shock. Luminaire wiring and electrical parts may be damaged when drilling for installation of LED retrofit kit. Check for enclosed wiring and components

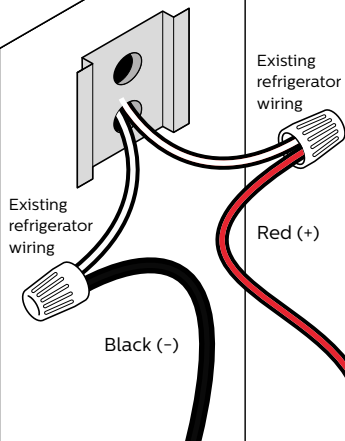
Leave space between the side profiles and refrigeration sides



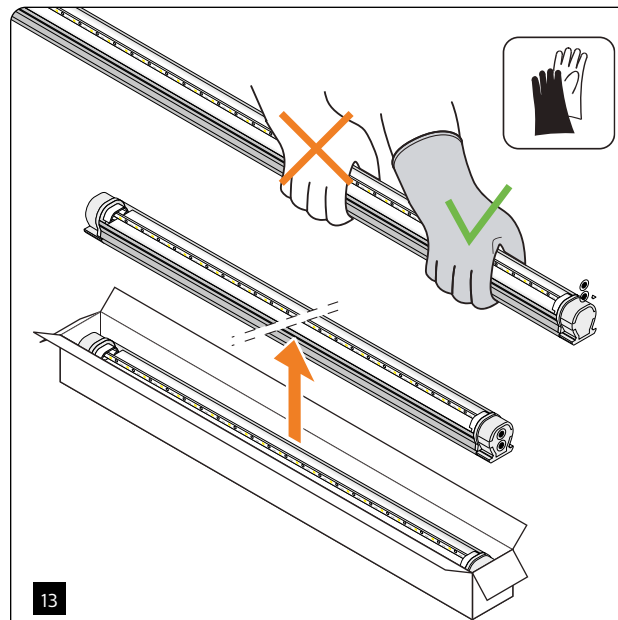
10



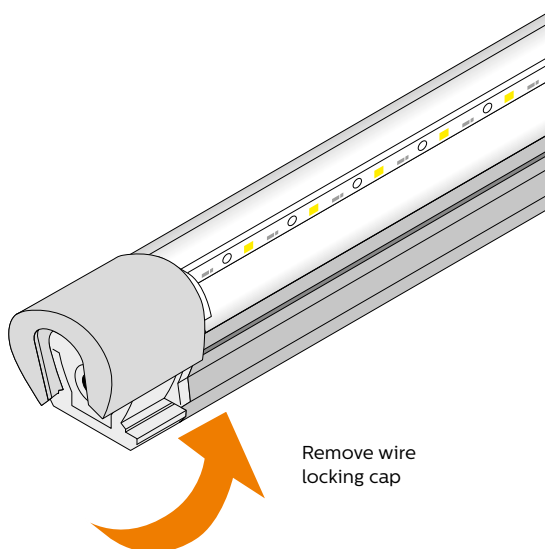
11



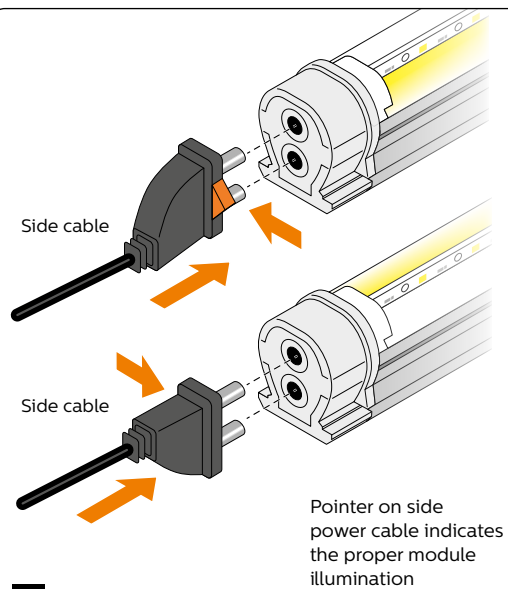
12



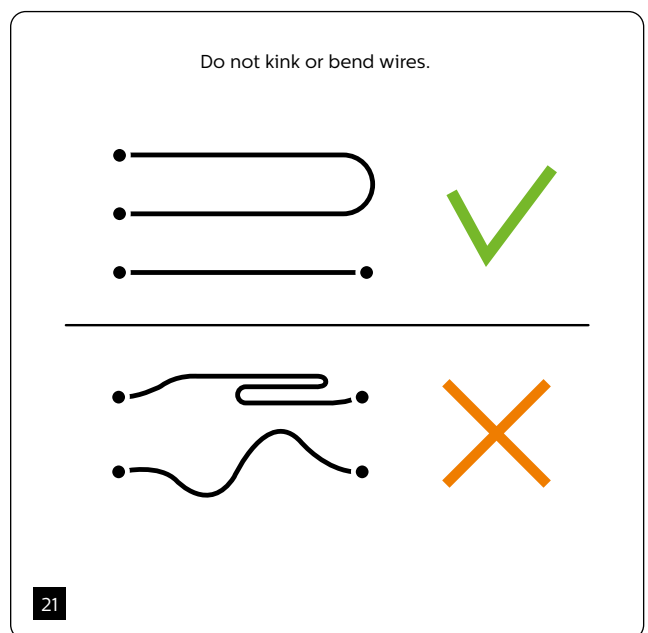
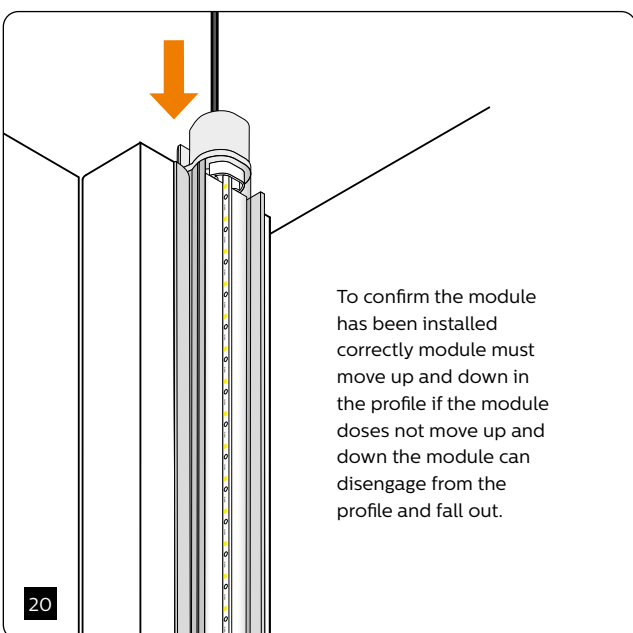
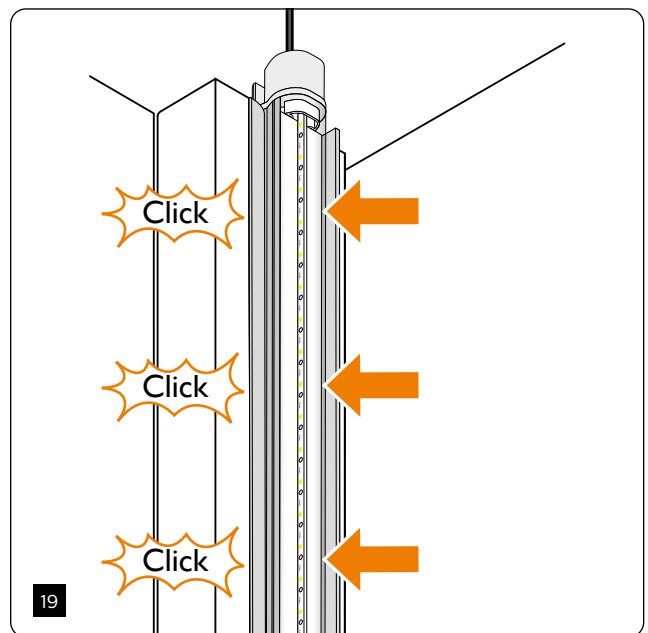
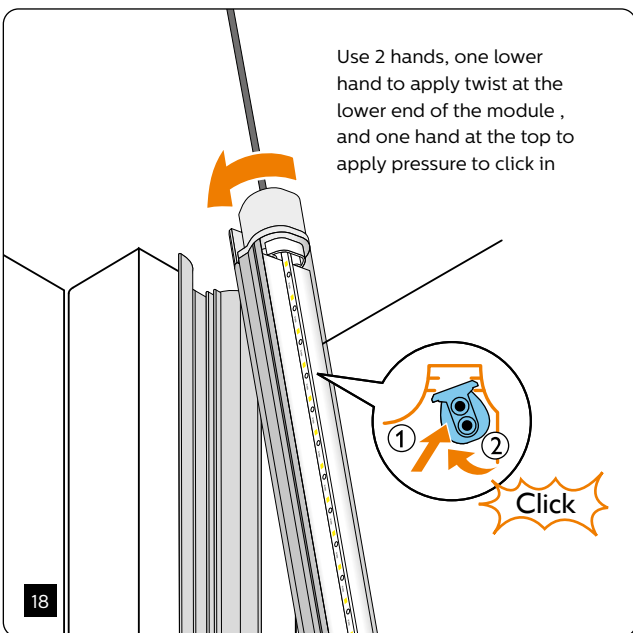
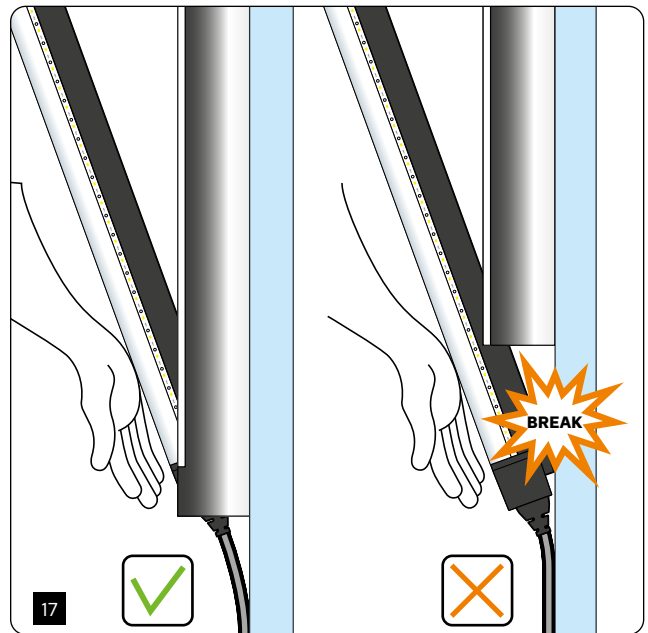
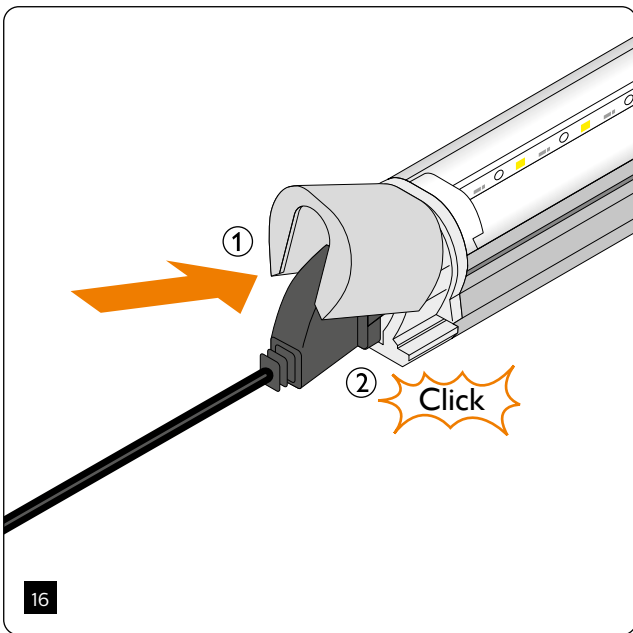
13



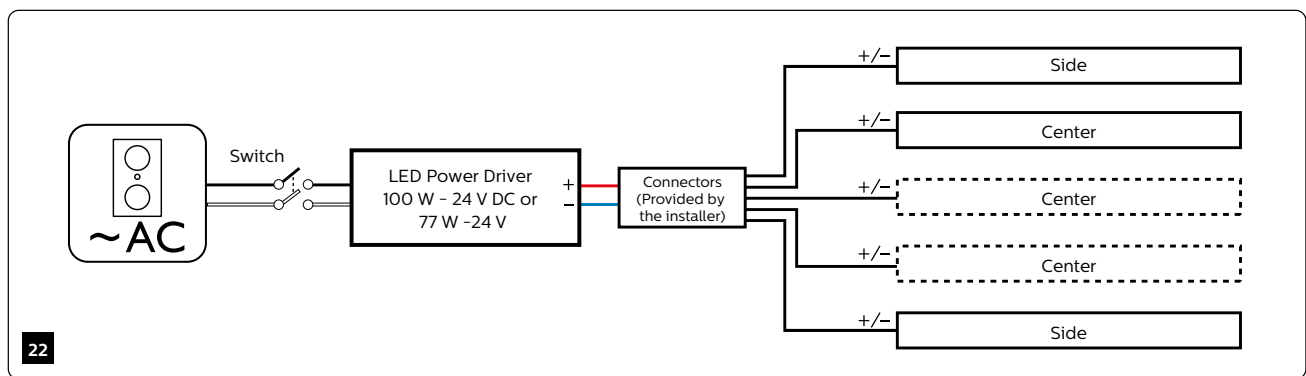
14



15

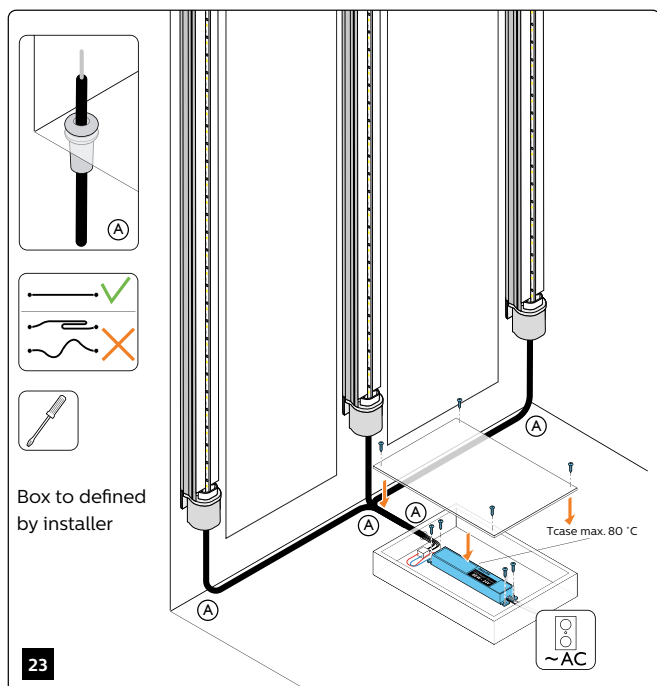


Wiring diagram

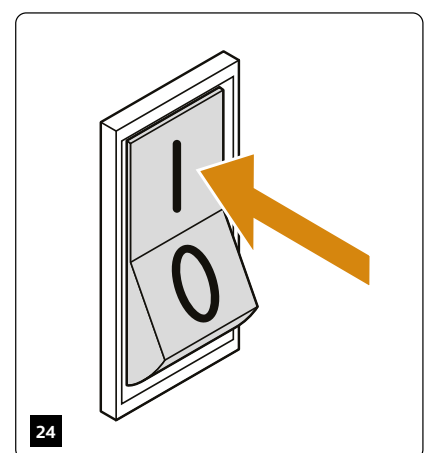


To allow for variance in the installation, it is not recommended to load the power driver beyond 85% of its rated maximum power.

		6 Door	5 Door	4 Door	3 Door	2 Door
9290 021 78706	PrimeSet RDL 500 1200 mm (47") 840 G1+	7	6	5	4	3
9290 017 08113	XITANIUM 77W 3.2A 24V INT-S	1	1	1	1	1
9290 008 97706	PrimeSet RDL-mount prof CTR 1200mm-47" B*	5	4	3	2	1
9290 008 97806	PrimeSet RDL-mount prof SD 1200mm-47" B*	2	2	2	2	2
9290 009 57206	PrimeSet RDL-Centre Cable 2.5m-98"B	5	4	3	2	1
9290 009 57306	PrimeSet RDL-Side Cable 2.5m-98"B	2	2	2	2	2
9290 021 78506	PrimeSet RDL 500 1500 mm (59") 840 G1+	7	6	5	4	3
9290 017 08113	XITANIUM 77W 3.2A 24V INT-S	1	1	1	1	1
9290 008 94506	PrimeSet RDL-mount prof CTR 1500mm-59" B*	5	4	3	2	1
9290 008 95206	PrimeSet RDL-mount prof SD 1500mm-47" B*	2	2	2	2	2
9290 009 57206	PrimeSet RDL-Centre Cable 2.5m-98"B	5	4	3	2	1
9290 009 57306	PrimeSet RDL-Side Cable 2.5m-98"B	2	2	2	2	2
9290 021 78306	PrimeSet RDL 500 1700 mm (67") 840 G1+	7	6	5	4	3
9290 017 08113	XITANIUM 77W 3.2A 24V INT-S	1	1	1	1	1
9290 008 94606	PrimeSet RDL-mount prof CTR 1700mm-67" B*	5	4	3	2	1
9290 008 95306	PrimeSet RDL-mount prof SD 1700mm-67" B*	2	2	2	2	2
9290 009 57206	PrimeSet RDL-Centre Cable 2.5m-98"B	5	4	3	2	1
9290 009 57306	PrimeSet RDL-Side Cable 2.5m-98"B	2	2	2	2	2



Install LED driver in same location where the ballast was formerly installed. Connection methods should be suitable for low temperature usage and standard cable. Jumper wiring may be necessary between mullions due to ballast reduction.



Periodic inspections

Prolonged exposure of the LED displays systems to moisture and ice may result in severe damage such as discoloration or LED malfunction. For that reason, we do recommend periodic inspection of the refrigeration cases.

Damaged door seals often cause excessive moisture or ice buildup. Please replace the seals if that situation occurs.



© 2020 Signify Holding. All rights reserved. The information provided herein is subject to change, without notice. Signify does not give any representation or warranty as to the accuracy or completeness of the information included herein and shall not be liable for any action in reliance thereon. The information presented in this document is not intended as any commercial offer and does not form part of any quotation or contract, unless otherwise agreed by Signify.

Philips_PrimeSet_RDL500-510_US_Retrofit_QIG_A02 05/20 philips.com/lighting

Signify North America Corporation
200 Franklin Square Drive,
Somerset, NJ 08873
Telephone 855-486-2216

Signify Canada Ltd.
281 Hillmount Road,
Markham, ON, Canada L6C 2S3
Telephone 800-668-9008

Philips and the Philips Shield Emblem are registered trademarks of Koninklijke Philips N.V. All other trademarks are owned by Signify Holding or their respective owners.