

Product Assembly Instructions for EvoKit Accessory 2x4 Endcap with Spacewise

Note: This document contains basic assembly instructions. It should contain information that is unique for this assembly. It is intended to contain information related to the product design that is required to correctly assemble the product. The information is not intended to use to replace normal operator instructions used in assembling the product.

1. Mount Strain Reliefs (Items 1 in exploded view on next page) on wires and place Strain Relief in Slots (Items 2) on Bracket (Item 3).
2. Mount Control Module (Item 4) on Bracket (Item 3) with Screw (Item 5).
3. Mount Ground Wire (Green) with Screw (Item 6) on Control Module (Item 4).
4. Secure other end of Ground Wire in Green Slot of connector on Control Module.
5. Secure wires (6) according to color in slots of connectors on Control Module.
6. Mount Sensor Clip (item 7) on End Panel (item 8).
7. Mount Sensor Cover (item 9) on Sensor (item 10).
8. Mount Sensor with Cover into Sensor Clip (Item 11) on End Panel (Item 8).
9. Mount Bracket on End Panel with 2 Screws (items 12).
10. Bundle Sensor Wire and tie together and secure in Control Module.
11. Secure Outgoing Wires in connector.
12. Place Product Label (item 13).
13. Test End Panel Assembly.
14. Package

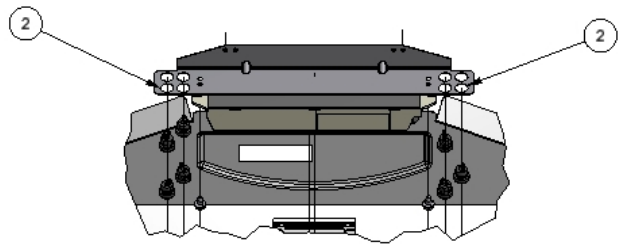
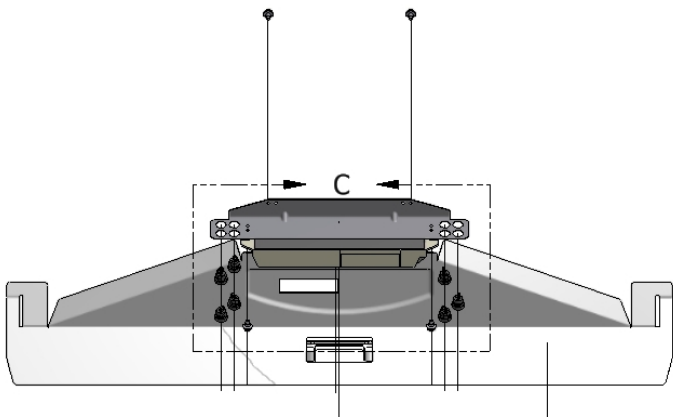
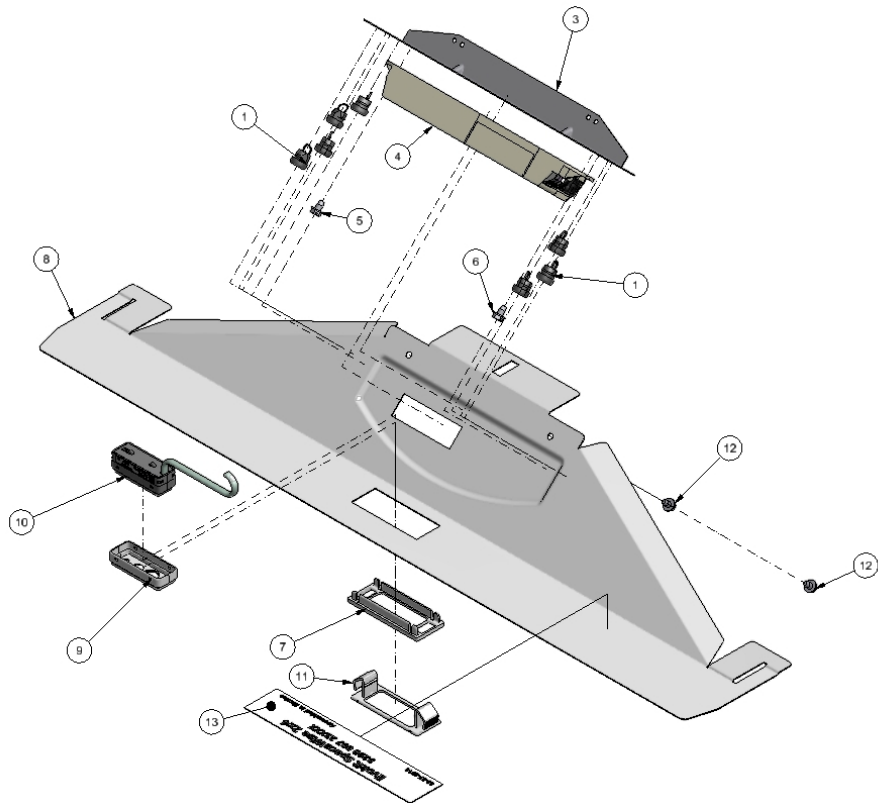


Evokit 2x4 Spacewise Assy_Jul 08-14.wmv

Inspect per Incoming Inspection Procedure. There should be no contaminants in or on the material, which will come off during our processing or in the normal operation of our finished product. No changes may be made in Material, Processing, or Packaging without Product Design Approval.

C	ECO 1058229 – UPDATE NOTES	8.07.14	PHILIPS ADVANCE	O'HARE INTERNATIONAL CENTER 10275 WEST HIGGINGS ROAD ROSEMONT ILLINOIS 60018-5603 (847) 390-5000
B	ECO 1058114 – UPDATE DRAWING	7.24.14		
A	ECO 1056480 – ISSUE DRAWING	7.7.14		
REV.	DESCRIPTION OF CHANGE (ECO NO.)	DATE		
UNLESS OTHERWISE SPECIFIED UNITS ARE IN MILLIMETERS (mm).	TOLERANCES	DRW BY: NORMA FEDERIGHI	Date: 7.7.14	TITLE: GENERIC EvoKit Accessory 2x4 Endcap DRAWING NO.: 443529111021
	FRACTIONS:	REV BY: NORMA FEDERIGHI	Date: 08.07.14	
	DECIMALS:	CHK BY:	Date:	
	ANGLES:	APP BY: HARSHITHA GUDIPATI	Date: 08.05.14	
	FORM: 13HM1513-ORIG (06/11/01)	APP BY:	Date:	
SIZE: LTR	RESP. FACILITY FOR PRODT. DWG. MAINTENANCE: ROSEMONT	SCALE: NTS	ISSUE DATE: 05.15.12	SHEET: 1 OF 2

This document and data disclosed herein or herewith is not to be reproduced, used or disclosed in whole or in part to anyone without the express written consent / permission of Advance.



Inspect per Incoming Inspection Procedure. There should be no contaminants in or on the material, which will come off during our processing or in the normal operation of our finished product. No changes may be made in Material, Processing, or Packaging without Product Design Approval.

C	ECO 1058229 – UPDATE NOTES			8.07.14	PHILIPS ADVANCE	O'HARE INTERNATIONAL CENTER 10275 WEST HIGGINGS ROAD ROSEMONT ILLINOIS 60018-5603 (847) 390-5000
B	ECO 1058114 – UPDATE DRAWING			7.24.14		
A	ECO 1056480 – ISSUE DRAWING			7.7.14		
REV.	DESCRIPTION OF CHANGE (ECO NO.)			DATE	TITLE:	
UNLESS OTHERWISE SPECIFIED UNITS ARE IN MILLIMETERS (mm). FORM: 13HM1513-ORIG (06/11/01)	TOLERANCES		DRW BY: NORMA FEDERIGHI	Date: 7.7.14	GENERIC EvoKit Accessory 2x4 Endcap	
	FRACTIONS:		REV BY: NORMA FEDERIGHI	Date: 08.07.14		
	DECIMALS:		CHK BY:	Date:		
	ANGLES:		APP BY: HARSHITHA GUDIPATI	Date: 08.05.14		
	FORM: 13HM1513-ORIG (06/11/01)		APP BY:	Date:		
SIZE: LTR	RESP. FACILITY FOR PRODT. DWG. MAINTENANCE: ROSEMONT	SCALE: NTS	ISSUE DATE: 05.15.12	SHEET: 2 OF 2	DRAWING NO.: 443529111021	

This document and data disclosed herein or herewith is not to be reproduced, used or disclosed in whole or in part to anyone without the express written consent / permission of Advance.