

# ADVANCE

by  Signify

Program

Advance Express



## Programming a LED driver has never been simpler.



### Programmable replacement LED drivers for Distributors using Advance Express

#### Why Advance Express?

Advance Express is a fast and simple way to sell programmable LED drivers with confidence

#### Programmable replacement LED drivers for distribution made easy

Advance Express is more than just a product, it is a program to help you win in the replacement LED driver market. Consisting of:

1. Recommended SKU's that cover most applications and lower your inventory
2. Training on how to get the needed information from the end user and select the driver
3. Wireless software developed with feedback from distributors
4. Easy label printing.

**Contact your ballast agent to learn how you can service the growing maintenance and repair market for LED drivers.**

# Fast and simple to program in 4 steps

1. Seven recommended programmable driver SKU's covering the most common configurations in the field to choose from.

## Downlight



XI036C100V054DSM1



## Troffer/ Linear



XI020C056V054BST2

XI054C150V054BST1

XI075C200V054BST1



## Outdoor / Industrial



XI055C180V054BSJ1

XI095C275V054BSF1

XI180C125V200BSF1



All 0-10V SKU's are rated for field install by UL are available (36) for the specific needs of your market.



2. Training on how to get the needed information to select the right replacement driver

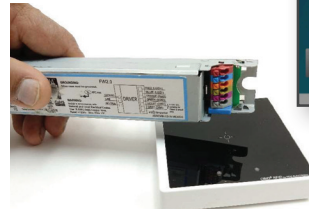
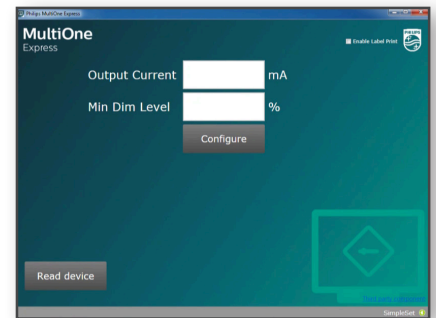
- Confidently select the right driver.
- Get the needed info from your customer in one call.
- Learn how to keep compliance with UL regulations

3. **Intuitive** software developed specifically for distributors,

**Wireless** programming for

Two fields to program -

- Output current
- Min dim level



LCN9620

4. Print labels for the driver.

- Document the settings of the programmed driver.
- No third party software required.
- Works with common printers.
- Order separately.

Printer information available at:

[www.signify.com/advanceexpress](http://www.signify.com/advanceexpress)

