

# Day-Brite

## CFI

by Signify

Linear

OW wraparound

Narrow, 4' or 8'  
T5, T5HO or T8



The Day-Brite / CFI OW wraparound narrow is a functional and economical lift-and-shift wrap, ideal for surface mount general illumination in light commercial and residential applications.

Project: \_\_\_\_\_  
 Location: \_\_\_\_\_  
 Cat.No: \_\_\_\_\_  
 Type: \_\_\_\_\_  
 Lamps: \_\_\_\_\_ Qty: \_\_\_\_\_  
 Notes: \_\_\_\_\_

### Ordering guide

Example: **OWN228-UNV-1/2-EB**

Series	Width	No. of Lamps per Cross Section	Lamp Type	Voltage	Options
	<input type="text" value="N"/>	<input type="text" value="2"/>	-	-	
OW Wraparound TOW Tandem (8')	N Narrow	(not included) 2	28 28WT5 (46") 32 32WT8 (48") 54HO 54WT5HO (46")	UNV Universal voltage 120/277V 120 120V 277 277V 347 347V	1/2 One 2-lamp ballast 1/4 One 4-lamp ballast 2/2 Two 2-lamp ballasts EB Electronic ballast, <10% THD EB10R T8 electronic ballast, program rapid start, <10% THD EBHE T8 electronic ballast, high efficiency, std. ballast factor EBLHE T8 electronic ballast, high efficiency, low ballast factor EBHHE T8 electronic ballast, high efficiency, high ballast factor EBS D T8 electronic step dimming ballast, .88 ballast factor EBD7 Advance Mark 7 dimming ballast, 0-10V (low voltage) control EBDX Advance Mark 10 dimming ballast, phase control EBD Electronic dimming ballast, customer specified E1 B100 emerg. ballast, T8, 350-450 lumens, 120/277V E1CAN B100-CAN emerg. ballast, Canada market, 350-450 lumens, 120/347V E7 B60 emerg. ballast, T8, 600-700 lumens, 120/277V E5 B50 emerg. ballast, US or Canada market, T8, 1100-1400 lumens, UNV E5CAN B50 -CAN emerg. ballast, Canada market, 1100-1400 lumens, 120/347V E5ST B50ST emerg. ballast w/self test, T8, 1100-1400 lumens, UNV E7LP LP550 emerg. ballast, T5/T5HO, 430-700 lumens, 120/277V E6LP LP600 emerg. ballast, US or Canada market, T5/T5HO, 750-1325 lumens, 120/277V GLR Fusing, fast blow

See Section 1600-OA for Option Information.  
 See Page 950-SS for Mounting Hardware.

### Accessories (order separately)

- CS-400 - Rigid Canopy
- CS-500 - 42° Top Swivel Canopy
- CS-12 - 12" Stem
- CS-18 - 18" Stem
- CS-24 - 24" Stem
- CS-30 - 30" Stem
- CS-36 - 36" Stem
- CS-48 - 48" Stem

## Light to go

Compatible configurations

Luminaire

OWN232-UNV

# OWN Wraparound, narrow

4' or 8' T5, T5HO or T8

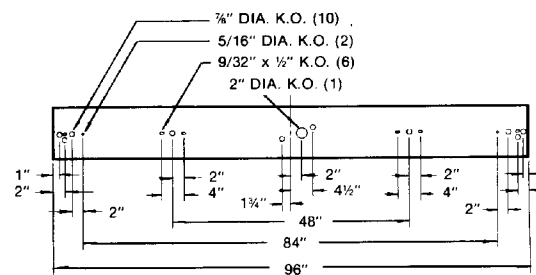
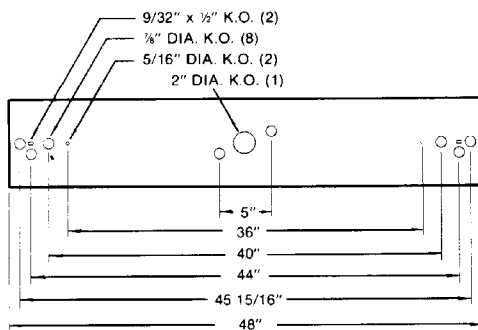
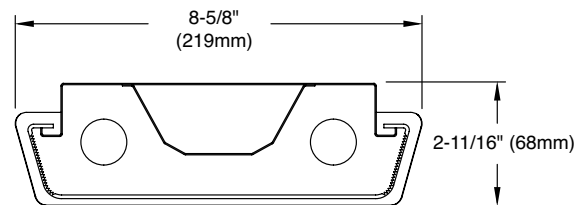
## Construction/Finish

- Pattern 12 bottom prisms with interior linear side wall prisms for maximum cleanliness and light control.
- Tapered shape provides a modern appearance.
- Full steel end plates feature embosses for improved aesthetics.
- 100% virgin acrylic lens hinges from either side for easy maintenance.
- Housing is multi-stage phosphate treated for maximum corrosion resistance and finish coat is high reflectance baked white enamel.
- Multiple knockouts accomodate a variety of mounting methods.
- Heavy duty channel of code gauge die formed steel.
- For surface or stem mounting.

## Electrical

- cULus listed for direct mounting on low density ceilings and damp locations.
- Self-contained fluorescent emergency power packs can be incorporated.
- Lampholders may be individually replaced or rewired.

## Dimensions



# OWN Wraparound, narrow

4' or 8' T5, T5HO or T8

## Photometry

Linear wraparound OWN 4ft, 2 Lamp T8

Efficiency – 72.8%

LER – 66

TER – 56

Catalog No.		Candlepower				Light Distribution				Average Luminance			
Test No.		Angle	End	45	Cross	Degrees Luminaire	Lumens	% Lamp	%	Angle	End	45°	Cross
OWN232-1/2-EB		0	1315	1315	1315	0-30	1057	18.2	25.0	45	4841	4948	4708
ITL41979		5	1317	1315	1310	0-40	1761	30.4	41.7	55	3776	3765	3225
1.4		15	1275	1291	1302	0-60	3035	52.3	71.9	65	2387	2329	2547
F32T8		25	1180	1233	1269	0-90	3711	64.0	87.9	75	1733	1945	2454
2900		35	1042	1138	1168	90-180	511	8.8	12.1	85	1654	2519	3741
59		45	855	962	999	0-180	4222	72.8	100.0				
		55	541	617	595								
		65	252	299	385								
		75	112	173	278								
		85	36	118	269								
		95	0	126	265								
		105	1	157	244								
		115	4	123	182								
		125	7	71	112								
		135	10	36	53								
		145	9	31	41								
		155	8	22	32								
		165	7	12	20								
		175	7	7	8								

Coefficients of Utilization									
EFFECTIVE FLOOR CAVITY REFLECTANCE 20 PER (pfc=0.20)									
pcc	80			70			50		
	70	50	30	70	50	30	50	30	
pw									
RCR									
0	84	84	84	81	81	81	76	76	
1	77	73	69	73	70	68	66	64	
2	69	65	59	68	61	57	57	55	
3	64	56	51	61	55	50	52	46	
4	58	51	44	56	48	42	46	40	
5	54	45	39	52	44	38	41	35	
6	50	40	34	47	40	34	38	32	
7	46	36	30	45	35	29	34	28	
8	42	34	28	41	33	27	30	26	
9	40	30	25	39	29	25	28	23	
10	38	28	23	36	28	23	27	22	

Comparative yearly lighting energy cost per 1000 lumens – **\$3.64** based on 3000 hrs. and \$.08 pwr KWH.

The photometric results were obtained in the Day-Brite laboratory which is NVLAP accredited by the National Institute of Standards and Technology.



Some luminaires use fluorescent or high intensity discharge (HID) lamps that contain small amounts of mercury. Such lamps are labeled, "Contain Mercury" and/or the symbol "HG". Lamps that contain mercury must be disposed of in accordance with local requirements. Information regarding lamp recycling and disposal can be found at [www.lamprecycle.org](http://www.lamprecycle.org)

