

**PHILIPS  
KEENE**

Garage &  
Canopy



# Compact & efficient, built to last

The **Philips Keene LED Garage and Canopy** light is slim and durable with a light-weight design, and provides you with a visually appealing lighting experience.

This luminaire can be surface mounted directly to the ceiling or pendant mounted using rigid conduit. Its light-weight design with quick and easy mounting plate allows simple installation and hands-free wiring. Whether it's new construction, or a retrofit installation, the Garage and Canopy fixture will provide years of trouble free operation and keep you on budget.

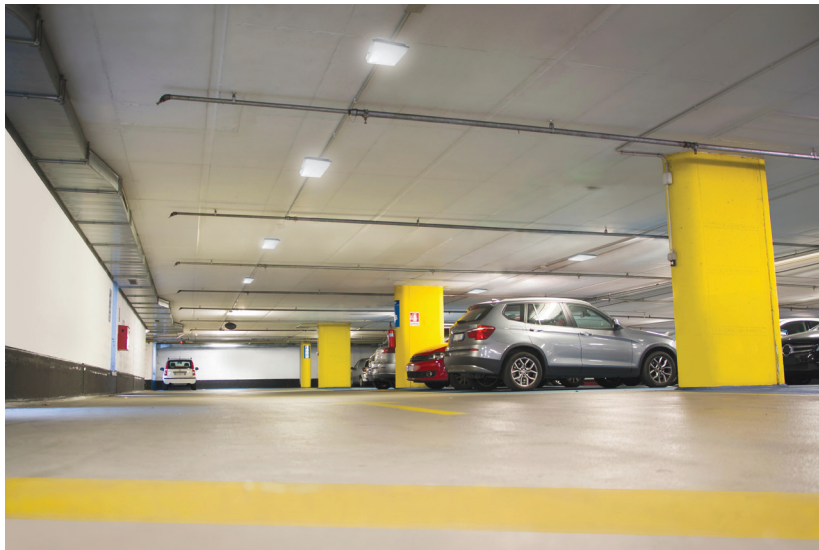
**A perfect solution to replace up to 150W HID luminaires with the added benefit of low maintenance\*.**

\*Based on comparison between 150W PSMH luminaires and GC88-NW-G1-SM-5-8-BZ per delivered lumens and in-situ application layout comparisons.

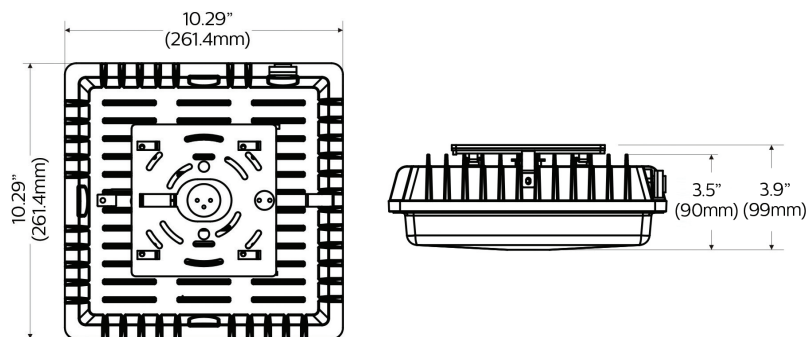


# Garage & Canopy LED

GC40/GC57/GC88





- Cost-effective and efficient lighting for parking garages, covered walkways and canopies.
- Great choice for new construction or retrofit installation.
- Slim and compact design.
- Durable, weather-tight IP66 rated construction with a rugged, UV stabilized, frosted lens.
- Easy to install with the integral quick-mount plate, or pendant mount with 3/4" rigid conduit.
- 5 year limited warranty.



## Ordering guide

example: GC57-NW-G1-SM-5-8-BZ

Luminaire	LED Color	Generation	Mounting	Distribution	Voltage	Finish
	<b>NW</b>	<b>G1</b>	<b>SM</b>	<b>5</b>		<b>BZ</b>
<b>GC40</b> Garage & Canopy LED 40W	<b>NW</b> Neutral White 4000K, 70CRI	<b>G1</b> Generation 1	<b>SM</b> Surface Mount	<b>5</b> Type 5 Symmetric	<b>8</b> 120-277VAC <b>6</b> 347VAC	<b>BZ</b> Bronze
<b>GC57</b> Garage & Canopy LED 57W						
<b>GC88</b> Garage & Canopy LED 88W						

## Performance data

Catalog Code	Lumens
GC40-NW-G1-SM-5-8-BZ	4735
GC57-NW-G1-SM-5-8-BZ	6322
GC88-NW-G1-SM-5-8-BZ	10,519

© 2018 Philips Lighting Holding B.V. All rights reserved.  
Philips reserves the right to make changes in specifications and/or to discontinue any product at any time without notice or obligation and will not be liable for any consequences resulting from the use of this publication.  
[philips.com/luminaires](http://philips.com/luminaires)



Philips Lighting North America Corporation  
200 Franklin Square Drive, Somerset, NJ 08873  
Tel. 855-486-2216

Philips Lighting Canada Ltd.  
281 Hillmount Rd, Markham, ON, Canada L6C 2S3  
Tel. 800-668-9008