



by Signify

Wall Sconce

AeroScape LED

ASW



Gardco AeroScape LED wall and surface mount features energy saving LEDs and a design that compliments modern architecture. ASW is designed for building and perimeter zones as well as egress lighting zones. Three optical distributions are available with typical Type II, Type III, and Type IV. Full range dimming and control options are available for additional energy savings.

To Be Discontinued in Q4 2020

Project: _____

Location: _____

Cat.No: _____

Type: _____

Lamps: _____ Qty: _____

Notes: _____

Ordering guide

Luminaire	Number of LEDs	Drive Current	LED Color Generation	Mounting	Distr.	Voltage	Dimming Control	Electrical	Options	Finish
ASW	32L			SM						
ASW AeroScape LED Wall & Surface Mounted Luminaire	32L 32 LEDs	350 350mA 530 530mA 1000 1000mA	NW-G2 Neutral White 4000K, 70 CRI Generation 2 WW-G2 Warm White 4000K, 70 CRI Generation 2 CW-G2 Cool White 4000K, 70 CRI Generation 2	SM Surface mount	2 Type 2 3 Type 3 4 Type 4	120 120V 208 208V 240 240V 277 277V 347 347V 480 480V UNV 120-277V AC HVU 347-480V AC	DD 0-10V Dimming Driver Photoelectric Systems PCB Photocontrol Button ^{2,3}	Fusing F1 Single (120, 277, 347VAC) ³ F2 Double (208, 240, 480VAC) ³ F3 Canadian Double Pull (208, 240, 480VAC) ³	— None (leave blank)	Textured BK Black WH White BZ Bronze DGY Dark Gray MGY Medium Gray Customer specified RAL Specify optional color or RAL (ex: RAL7024) CC Custom color (customer supplied color chip to match is required)

1. Available in 120, 208, 240, 277 or UNV only.
2. The 'PCB' option not available in 480V.
3. Must specify input voltage.
4. Not available with Dimming Driver (DD) option.



ASW AeroScape LED

Wall Sconce

LED Wattage and Lumen Values

Neutral White Ordering Codes	LED Quantity	System Current (A)	Color Temp (K)	Avg System Wattage	Type 2			Type 3			Type 4		
					Lumen Output	Bug Rating	Efficacy	Lumen Output	Bug Rating	Efficacy	Lumen Output	Bug Rating	Efficacy
ASW-32L-350-NW-G2	32	350	4000	37	5163	B1-U0-G1	113	3916	B1-U0-G1	106	3914	B1-U0-G1	106
ASW-32L-530-NW-G2	32	530	4000	57	5990	B1-U0-G1	105	5634	B1-U0-G2	98	5631	B1-U0-G2	98
ASW-32L-1000-NW-G2	32	1000	4000	114	10210	B2-U0-G2	90	9603	B1-U0-G2	84	9597	B2-U0-G2	84

Distributions

Pathway lighting



Type 2
Designed to IES Type II classification.

Perimeter lighting



Type 3
Designed to IES Type III classification.

Entrance lighting

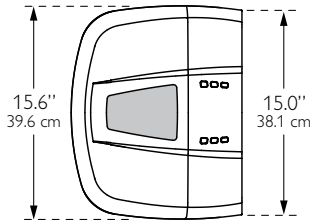


Type 4
Designed to IES Type IV classification.

Dimensions

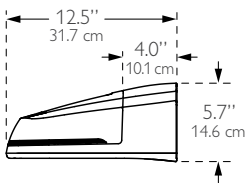
ASW-32G1 Dimensions

Top View

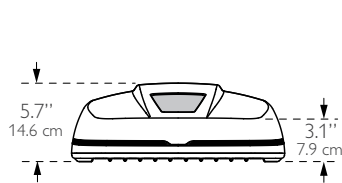


Weight: 13.4 lbs (6.1 kgs)

Side View



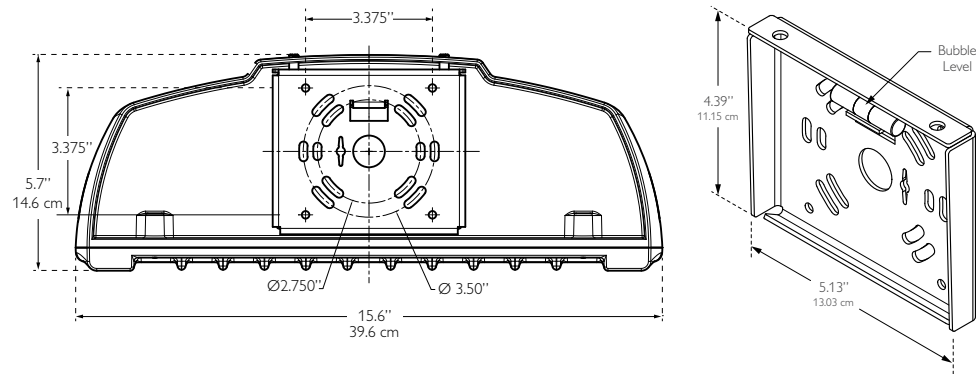
End View



ASW AeroScape LED

Wall Sconce

Wall Mount Drill Template



Specifications

Housing

Die-cast aluminum housing with corrosion resistant hardware mounts directly to a wall without the need for a support arm. The low profile rounded form reduces the effective projected area of the luminaire and it matches the style of the area luminaire.

Thermal Management

The AeroScape LED provides a one piece die cast with integral thermal radiation fins combined with lateral air ways, to provide the excellent thermal management so critical to long LED system life. AeroScape is ETL listed to UL1598 from -40 to 40°C ambient.

LED Optical System

LED arrays are set to achieve IES Type II, Type III, and Type IV. Individual LED arrays are replaceable. Luminaires feature high performance Class 1 LED systems.

Predicted Lumen Depreciation Data

Ambient Temperature °C	System Current	LED Current	Calculated L70hrs ^{1,2}	L70 per TM21 ^{2,3}	Lumen Maintenance @ 60,000hrs
25 °C	1200 mA	1200 mA	>100,000	>60,000	86%

1. Predicted performance derived from LED manufacturer's data and engineering design estimates, based on IESNA LM-80 methodology. Actual experience may vary due to field application conditions.
2. L70 is the predicted time when LED performance depreciates to 70% of initial lumen output.
3. Calculated per IESNA TM 21-11. Published L70 hours limited to 6 times actual LED test hours.

Finish

Five standard colors offered in textured black, white, bronze, dark gray and medium gray. RAL and custom color matching available. Color in accordance with the AAMA 2604 standard. Application of polyester powder coat paint (2.5 mil minimum). The thermosetting resins provides a discoloration resistant finish in accordance with the ASTM D2244 standard, as well as luster retention in keeping with the ASTM D523 standard and humidity proof in accordance with the ASTM D2247 standard.

IP Rating

Optic chamber and separate driver housing constructed to IP66.

Electrical

Luminaires are equipped with an LED driver that accepts 120V through 277V, or 347V through 480V, 50hz to 60hz, input. Driver output is based on the LED wattage selected. Component-to-component wiring within the luminaire will carry no more than 80% of rated current and is listed by UL. Power factor is not less than 90%. Luminaire consumes 0.0 watts in the off state. All motion sensors utilized consume 0.0 watts in the off state. Surge protector standard. 10KA per ANSI/IEEE C62.41.2.

Certifications and Compliance

cETLus Listed for Canada and USA. AeroScape Wall LED luminaires are DesignLights Consortium qualified. Entire luminaire is rated for operation in ambient temperature of -40°C (-40°F) up to +40°C (+104°F).

Limited Warranty

5 year limited warranty.
See signify.com/outdoorluminaires for complete details and exclusions.

