

# Day-Brite



by Signify

Linear

FluxStream wraparound

FSW 2', 4', & 8'



Day-Brite / CFI FluxStream LED wraparound is a high performing luminaire delivering smooth diffuse light ideal for light industrial, commercial and residential applications with unparalleled energy efficiency.

Project: \_\_\_\_\_  
 Location: \_\_\_\_\_  
 Cat.No: \_\_\_\_\_  
 Type: \_\_\_\_\_  
 Lumens: \_\_\_\_\_ Qty: \_\_\_\_\_  
 Notes: \_\_\_\_\_

## Ordering guide

Example: FSW440L840-UNV-DIM

Series	Length (nominal)	Lumens <sup>2</sup> (nominal)	Color temp. (K)	Voltage	Driver	Options
<b>FSW</b>			—	—	—	
FSW FluxStream Wraparound	2' 2' length	20L 2000 lumens 30L 3000 lumens	830 80 CRI, 3000K 835 80 CRI, 3500K	UNV Universal voltage 120-277V 120 <sup>3</sup> 120V 277 <sup>3</sup> 277V 347 <sup>4</sup> 347V	DIM <sup>11</sup> Dimming SDIM <sup>5,6</sup> Step dimming to 40% input power XDIM <sup>3,5,6</sup> MarkX phase dimming DALI <sup>7</sup> DALI	EMLED <sup>4,8,9</sup> Factory wired Bodine BSL310LP integral emergency pack. Nominal 1100lm IAP <sup>10,12</sup> Integral Interact Pro RF sensor, enables wireless connected lighting control IAO <sup>10</sup> Integral Interact Office daylighting and occupancy sensor, enables wireless connected lighting control LSXR10 120-347V motion sensor, factory installed on end cap LSXR10ADC <sup>10</sup> 120-347V motion sensor with photocell and hi/lo trim dimming, factory installed on end cap SWZDT <sup>10</sup> Integral sensor, daylighting and occupancy, advanced grouping, with dwell time PCSR Pull chain switch right, 120V only PCSL Pull chain switch left, 120V only PAF Paint after fabrication for extra corrosion resistance (white)
	4' 4' length	30L 3000 lumens 40L 4000 lumens 55L 5500 lumens 70L 7000 lumens	840 80 CRI, 4000K 850 80 CRI, 5000K			
	8' 8' length	60L 6000 lumens 80L 8000 lumens 110L 11000 lumens 140L 14000 lumens				

- 8' is tandem (2) 4' lenses with single piece 8' body.
- Nominal delivered lumens at 25°C ambient.
- XDIM option must be specified with 120V or 277V options only.
- 347V with EMLED only available in 8' models.
- Not available in 2' models.
- Not available in 4' 70L or 8' 140L models.
- DALI available up to 80L options only, consult factory for other options.
- EMLED not available on 2' models.
- EMLED on 8' models illuminates 4' section in emergency mode.
- Available with DIM driver option only.
- Integral controls options dimmable to 5% via wireless wall switch (see p.2).  
Non-integral controls configurations are 0-10V dimmable to 1%.
- Not available with 110L and 140L options

## Accessories (order separately)

- FSWD2L – FluxWrap Diffuse 2' replacement lens
- FSWD4L – FluxWrap Diffuse 4' replacement lens (order two for 8' models)
- LSXR10 – Low bay PIR occ sensor, 120-277V
- LSXR10ADC – Low bay PIR occ with photocell sensor and hi/lo trim dimming, 120-277V
- FSTH – Sliding hanger bracket (set of 2)
- FSJW – Continuous row joiner (one per joint)
- (See last page for details and more options)

## General notes

Many luminaire components, such as reflectors, refractors, lenses, sockets, lampholders, and LEDs are made from various types of plastics which can be adversely affected by airborne contaminants. If sulfur based chemicals, petroleum based products, cleaning solutions, or other contaminants are expected in the intended area of use, consult factory for compatibility.



interact ready.

# FSW FluxStream LED wraparound

## 2', 4' and 8'

### Features

- Compact design for installation in tight spaces
- Frosted acrylic diffuser provides wide light distribution and superior glare control
- Injection molded lens retainers<sup>5</sup> provide positive diffuser retention, and easy tool-free access to LED boards and driver
- 2', 4' and 8' tandem lengths available to accommodate many field applications
- Up to 100,000 hour predicted L70 LED lumen maintenance provides long service life to reduce maintenance costs
- Can be surface mounted on ceilings or walls, or suspended via chain, pendants or cables
- Wall mountable – ADA compliant
- Ideal for cold applications (-20°C to 25°C)
- FSWJ accessory required for continuous row mounting, one FSWJ at each joint
- 7/8" knock out provided at each end and on base of luminaire. Note: Center knockout is covered and not useable in 4' version with EMLED option.

- Multiple driver options available with 0-10v as standard
- Enclosed lens minimizes penetration of dust, insects, and other debris into the lamp compartment
- 8' tandem unit is two 4' optical assemblies with an aesthetic center mullion on a single full length chassis
- Integral controls options include sensor mounted in one lens retainer.
- Fluxstream luminaires are Designlights Consortium<sup>®</sup> qualified. Please see the DLC QPL list for exact catalog numbers [www.designlights.org/QPL](http://www.designlights.org/QPL)
- 5 year manufacturer's limited warranty. Visit [signify.com/warranties](http://signify.com/warranties) for complete warranty information

### Finish

- Baked white acrylic matte high reflectance paint finish
- PAF option gives extra corrosion resistance for canopy or humid applications.

### Shielding

- Contoured frosted acrylic lens

### Electrical

- LED boards and drivers are RoHS (Restriction of Hazardous Substances) compliant. Total system life rated at 50,000 hours. Predicted L70 lifetime based on LED manufacturer's supplied LM-80 data and in-situ laboratory testing at 25°C ambient
- Integral emergency driver with EMLED option. To estimate lumen output in emergency, multiply emergency pack wattage by efficacy, then by 1.10

### Materials

- Heavy gauge cold rolled steel housing and LED pan. Polycarbonate injection molded end caps. Profile extruded acrylic diffuser

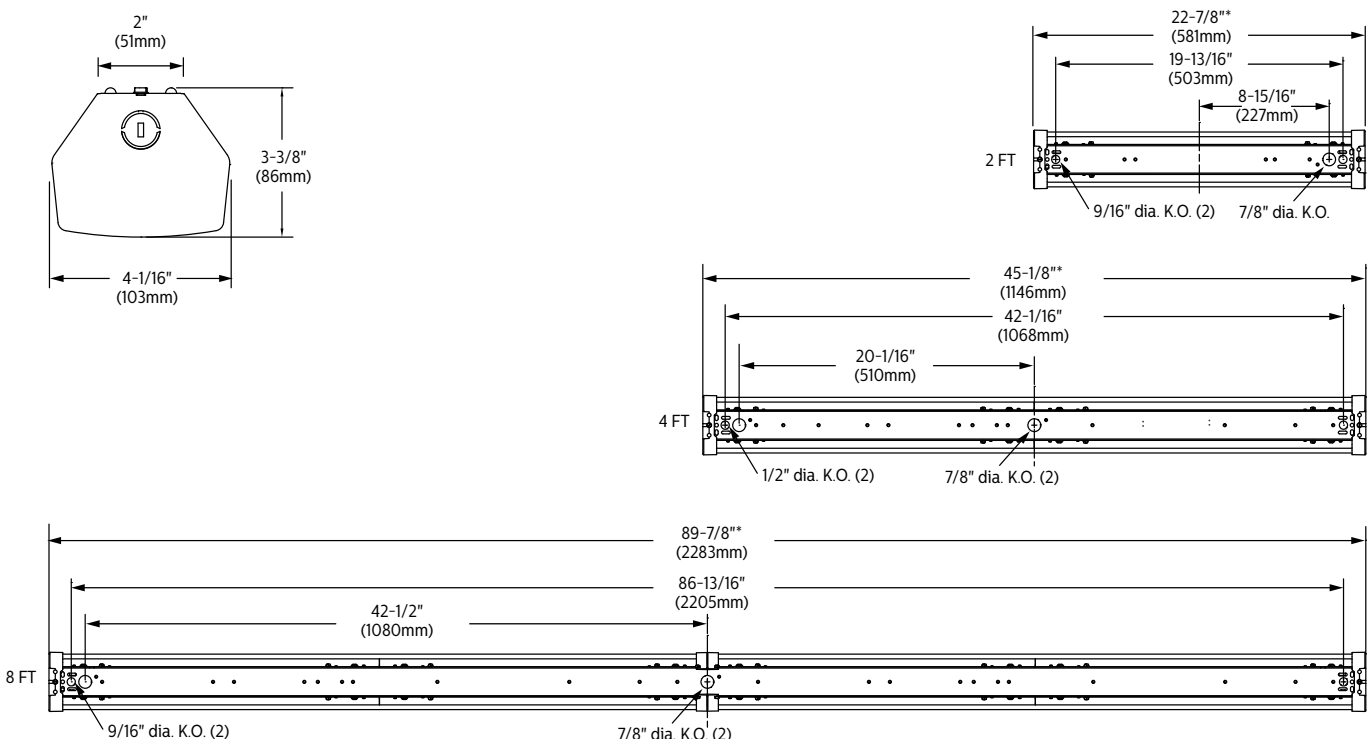
### Labels

- cETLus listed
- Suitable for damp locations

### Performance data

Fixture	Lumens	Wattage	Efficacy
FSW220L840	1904lm	16.6W	114lm/w
FSW230L840	3028lm	28.9W	104lm/w
FSW440L840	3856lm	31.4W	122lm/w
FSW455L840	5339lm	44.5W	119lm/w
FSW470L840	6712lm	58.0W	114lm/w

### Dimensions



\*For integral controls option, overall length is 1-3/8" (35mm) longer.

# FSW FluxStream LED wraparound

2', 4' and 8'

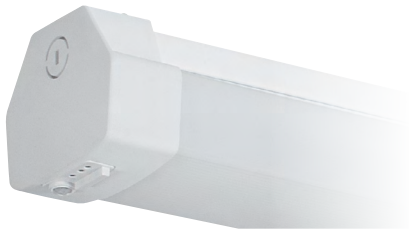
## Wireless Controls Options

### SpaceWise DT (SWZDT)

- Standalone daylight and occupancy sensing with advanced grouping and dwell time
- Commissioning via compatible Android phone and Philips Field App
- Dimming via compatible Zigbee wireless wall switch only (see link below for details)
- Register for the commissioning app at <http://registration.componentcloud.philips.com/appregistration/>
- Integral sensing options may not be combined
- For more information including recommended switches, refer to the following: -

**SWZDT** - [www.usa.lighting.philips.com/systems/lighting-systems/spacewise](http://www.usa.lighting.philips.com/systems/lighting-systems/spacewise)

### FluxStream wrap shown with integral sensor



### Interact Pro (IAP)

- Interact Pro brings the power of connected lighting to **small and medium businesses** without the complexity usually associated with connected lighting.
- Interact Pro includes an app, a portal and a broad portfolio of wireless Luminaires, lamps and retrofit kits all working on the same system.
- Commissioning via Interact Pro App (Android or iPhone)
- Prepare commissioning remotely via Interact Pro portal
- Requires compatible Interact Pro Gateway and internet connectivity for commissioning
- Compatible with UID8451/10 ZigBee Greenpower wireless dimmer switch
- Compatible with wireless Occ sensor (OCC SENSOR IA CM IP42 WH 10/1) or wireless Day/Occ sensor (OCC MULTI SENSOR IA CM WH 10/1)
- For more information on Interact Pro visit: [www.interact-lighting.com/pro](http://www.interact-lighting.com/pro)
- For more information on Interact Ready visit: [www.philips.com/interact-ready](http://www.philips.com/interact-ready)

### Interact Office (IAO)

- A wireless IoT connected lighting solution for **large enterprises** that span across multiple floors, buildings and require multiple gateways.
- View all your projects under one dashboard and easily compare insights from multiple projects in one view.
- Compatible Zigbee Green Power wall dimmer and wireless Occupancy or Daylight & Occupancy sensors available.
- Use Interact Office software and insights to increase building efficiency, achieve building wide integration and optimize space through occupancy analytics.
- Supports advanced IoT Apps on wayfinding, room/desk reservation and offers open APIs
- Requires compatible Interact Office Gateway and internet connectivity for commissioning.
- For more information on Interact Office Wireless, visit: [www.interact-lighting.com/office](http://www.interact-lighting.com/office) or [www.usa.lighting.philips.com/systems/system-areas/offices](http://www.usa.lighting.philips.com/systems/system-areas/offices)

# FSW FluxStream LED wraparound

2', 4' and 8'

## Photometry

### 2' FluxStream LED wraparound, 2000 nominal delivered lumens

LER - 114

**Catalog No.** FSW220L840-UNV-DIM  
**Test No.** 37658  
**S/MH** 1.3  
**Lamp Type** LED  
**Lumens** 1904  
**Input Watts** 17

Comparative yearly lighting energy cost per 1000 lumens – **\$2.09** based on 3000 hrs. and \$.08 pwr KWH.

The photometric results were obtained in the Day-Brite laboratory which is NVLAP accredited by the National Institute of Standards and Technology.

Photometric values based on test performed in compliance with LM-79.

#### Candlepower

Angle	End	45	Cross	Back-45
0	559	559	559	559
5	551	558	560	558
15	531	541	545	541
25	490	504	512	504
35	432	452	463	452
45	359	386	401	386
55	278	312	330	312
65	190	233	254	233
75	100	153	176	153
85	23	77	103	77

#### Light Distribution

Degrees	Lumens	% Luminaire
0-30	437	22.9
0-40	718	37.7
0-60	1291	67.7
0-90	1754	92
90-180	153	8.0
0-180	1906	100

#### Average Luminance

Zone	End	45'	Cross
45	8732	7352	7212
55	8094	6557	6466
65	7141	5657	5641
75	5584	4560	4685
85	2667	3099	3553

#### Coefficients of Utilization

EFFECTIVE FLOOR CAVITY REFLECTANCE 20 PER (pfc=0.20)									
pfc =	20					70		50	
Ceiling	80					70		50	
Wall	70	50	30	70	50	30	50	30	
RCR									
0	116	116	116	112	112	112	107	107	
1	106	100	95	102	96	93	91	88	
2	94	86	79	92	83	77	79	73	
3	86	76	67	83	72	66	68	63	
4	79	67	57	76	65	56	60	54	
5	72	58	50	69	57	48	55	46	
6	67	53	44	65	52	42	48	41	
7	61	47	39	59	46	39	45	36	
8	57	44	34	56	42	34	40	34	
9	54	40	32	52	39	32	38	30	
10	50	36	28	48	35	28	34	28	

### 2' FluxStream LED wraparound, 3000 nominal delivered lumens

LER - 104

**Catalog No.** FSW230L840-UNV-DIM  
**Test No.** 37662  
**S/MH** 1.3  
**Lamp Type** LED  
**Lumens** 3028  
**Input Watts** 29

Comparative yearly lighting energy cost per 1000 lumens – **\$2.29** based on 3000 hrs. and \$.08 pwr KWH.

The photometric results were obtained in the Day-Brite laboratory which is NVLAP accredited by the National Institute of Standards and Technology.

Photometric values based on test performed in compliance with LM-79.

#### Candlepower

Angle	End	45	Cross	Back-45
0	912	912	912	912
5	899	910	914	910
15	866	882	890	882
25	800	824	836	824
35	706	740	756	740
45	587	633	656	633
55	425	478	523	478
65	290	358	388	358
75	153	235	270	235
85	36	119	158	119

#### Light Distribution

Degrees	Lumens	% Luminaire
0-30	713	23.5
0-40	1174	38.7
0-60	2085	68.8
0-90	2794	92.2
90-180	238	7.8
0-180	3032	100

#### Average Luminance

Zone	End	45'	Cross
45	14277	12051	11797
55	12361	10058	10244
65	10928	8693	8623
75	8566	7007	7172
85	4110	4810	5437

#### Coefficients of Utilization

EFFECTIVE FLOOR CAVITY REFLECTANCE 20 PER (pfc=0.20)									
pfc =	20					70		50	
Ceiling	80					70		50	
Wall	70	50	30	70	50	30	50	30	
RCR									
0	116	116	116	113	113	113	107	107	
1	106	101	95	102	96	93	92	88	
2	95	86	80	92	83	78	80	73	
3	86	76	68	83	73	66	69	63	
4	80	67	57	77	65	56	61	55	
5	72	59	51	69	57	50	55	47	
6	67	54	45	65	53	44	50	41	
7	63	48	40	59	47	39	45	38	
8	57	44	35	56	42	34	40	34	
9	54	40	33	52	40	32	38	30	
10	51	38	29	48	36	28	34	28	

# FSW FluxStream LED wraparound

2', 4' and 8'

## Photometry

### 4' FluxStream LED wraparound, 4000 nominal delivered lumens

LER - 122

**Catalog No.** FSW440L840-UNV-DIM  
**Test No.** 37656  
**S/MH** 1.3  
**Lamp Type** LED  
**Lumens** 3856  
**Input Watts** 31

Comparative yearly lighting energy cost per 1000 lumens – **\$1.95** based on 3000 hrs. and \$.08 pwr KWH.

The photometric results were obtained in the Day-Brite laboratory which is NVLAP accredited by the National Institute of Standards and Technology.

Photometric values based on test performed in compliance with LM-79.

#### Candlepower

Angle	End	45	Cross	Back-45
0	1123	1123	1123	1123
5	1107	1117	1124	1117
15	1067	1085	1096	1085
25	987	1014	1033	1014
35	871	913	934	913
45	728	790	813	790
55	557	642	674	642
65	360	451	505	451
75	190	297	341	297
85	43	155	206	155

#### Light Distribution

Degrees	Lumens	% Luminaire
0-30	880	22.8
0-40	1449	37.5
0-60	2612	67.6
0-90	3514	91
90-180	348	9.0
0-180	3862	100

#### Average Luminance

Zone	End	45°	Cross
45	9388	7848	7492
55	8718	7090	6755
65	7439	5791	5742
75	6070	4741	4639
85	3243	3385	3631

#### Coefficients of Utilization

##### EFFECTIVE FLOOR CAVITY REFLECTANCE 20 PER (pfc=0.20)

pfc =	20		80		70		50	
Cell								
Wall	70	50	30	70	50	30	50	30
RCR								
0	116	116	116	112	112	112	106	106
1	105	100	94	102	96	93	91	88
2	94	86	79	92	83	77	79	72
3	86	76	67	82	72	66	68	63
4	79	67	57	76	65	56	60	54
5	72	59	50	69	57	48	55	46
6	67	53	44	65	52	44	48	41
7	61	47	40	59	46	39	45	36
8	57	44	34	56	42	34	40	34
9	54	40	32	52	39	32	38	30
10	50	36	28	48	35	28	34	28

### 4' FluxStream LED wraparound, 5500 nominal delivered lumens

LER - 119

**Catalog No.** FSW455L840-UNV-DIM  
**Test No.** 376555  
**S/MH** 1.3  
**Lamp Type** LED  
**Lumens** 5339  
**Input Watts** 45

Comparative yearly lighting energy cost per 1000 lumens – **\$2.00** based on 3000 hrs. and \$.08 pwr KWH.

The photometric results were obtained in the Day-Brite laboratory which is NVLAP accredited by the National Institute of Standards and Technology.

Photometric values based on test performed in compliance with LM-79.

#### Candlepower

Angle	End	45	Cross	Back-45
0	1546	1546	1546	1546
5	1523	1538	1549	1538
15	1468	1493	1511	1493
25	1357	1396	1423	1396
35	1199	1256	1286	1256
45	1002	1086	1119	1086
55	776	883	927	883
65	495	663	716	663
75	261	408	468	408
85	60	211	279	211

#### Light Distribution

Degrees	Lumens	% Luminaire
0-30	1211	22.7
0-40	1995	37.3
0-60	3602	67.4
0-90	4871	91.1
90-180	477	8.9
0-180	3862	100

#### Average Luminance

Zone	End	45°	Cross
45	12919	10790	10317
55	12142	9742	9297
65	10244	8513	8138
75	8365	6504	6366
85	4505	4608	4912

#### Coefficients of Utilization

##### EFFECTIVE FLOOR CAVITY REFLECTANCE 20 PER (pfc=0.20)

pfc =	20		80		70		50	
Cell								
Wall	70	50	30	70	50	30	50	30
RCR								
0	116	116	116	112	112	112	106	106
1	105	100	95	102	96	93	91	88
2	94	86	79	92	83	77	79	72
3	86	76	67	82	72	66	68	61
4	79	67	57	76	65	56	60	54
5	72	58	50	69	57	48	55	46
6	67	53	44	64	52	42	48	41
7	61	47	39	59	46	39	45	36
8	57	44	34	56	42	34	40	34
9	54	40	32	52	39	30	36	29
10	50	36	28	48	35	28	34	28

# FSW FluxStream LED wraparound

2', 4' and 8'

4' FluxStream LED wraparound, 7000 nominal delivered lumens

LER - 114

<b>Catalog No.</b> FSW470L840-UNV-DIM <b>Test No.</b> 37654 <b>S/MH</b> 1.3 <b>Lamp Type</b> LED <b>Lumens</b> 6712 <b>Input Watts</b> 58  Comparative yearly lighting energy cost per 1000 lumens – \$2.07 based on 3000 hrs. and 5.08 pwr KWH.  The photometric results were obtained in the Day-Brite laboratory which is NVLAP accredited by the National Institute of Standards and Technology.  Photometric values based on test performed in compliance with LM-79.	<b>Candlepower</b>  <table border="1"> <thead> <tr> <th>Angle</th> <th>End</th> <th>45</th> <th>Cross</th> <th>Back-45</th> </tr> </thead> <tbody> <tr> <td>0</td> <td>1941</td> <td>1941</td> <td>1941</td> <td>1941</td> </tr> <tr> <td>5</td> <td>1914</td> <td>1930</td> <td>1941</td> <td>1930</td> </tr> <tr> <td>15</td> <td>1845</td> <td>1875</td> <td>1893</td> <td>1875</td> </tr> <tr> <td>25</td> <td>1706</td> <td>1753</td> <td>1784</td> <td>1753</td> </tr> <tr> <td>35</td> <td>1506</td> <td>1576</td> <td>1611</td> <td>1576</td> </tr> <tr> <td>45</td> <td>1259</td> <td>1362</td> <td>1402</td> <td>1362</td> </tr> <tr> <td>55</td> <td>975</td> <td>1106</td> <td>1161</td> <td>1106</td> </tr> <tr> <td>65</td> <td>665</td> <td>830</td> <td>895</td> <td>830</td> </tr> <tr> <td>75</td> <td>327</td> <td>531</td> <td>608</td> <td>531</td> </tr> <tr> <td>85</td> <td>75</td> <td>264</td> <td>350</td> <td>264</td> </tr> </tbody> </table>	Angle	End	45	Cross	Back-45	0	1941	1941	1941	1941	5	1914	1930	1941	1930	15	1845	1875	1893	1875	25	1706	1753	1784	1753	35	1506	1576	1611	1576	45	1259	1362	1402	1362	55	975	1106	1161	1106	65	665	830	895	830	75	327	531	608	531	85	75	264	350	264	<b>Light Distribution</b> <table border="1"> <thead> <tr> <th>Degrees</th> <th>Lumens</th> <th>% Luminaire</th> </tr> </thead> <tbody> <tr> <td>0-30</td> <td>1520</td> <td>22.6</td> </tr> <tr> <td>0-40</td> <td>2503</td> <td>37.2</td> </tr> <tr> <td>0-60</td> <td>4518</td> <td>67.2</td> </tr> <tr> <td>0-90</td> <td>6130</td> <td>91.2</td> </tr> <tr> <td>90-180</td> <td>593</td> <td>8.8</td> </tr> <tr> <td>0-180</td> <td>6723</td> <td>100</td> </tr> </tbody> </table>	Degrees	Lumens	% Luminaire	0-30	1520	22.6	0-40	2503	37.2	0-60	4518	67.2	0-90	6130	91.2	90-180	593	8.8	0-180	6723	100	<b>Average Luminance</b> <table border="1"> <thead> <tr> <th>Zone</th> <th>End</th> <th>45°</th> <th>Cross</th> </tr> </thead> <tbody> <tr> <td>45</td> <td>16224</td> <td>13532</td> <td>12918</td> </tr> <tr> <td>55</td> <td>15244</td> <td>12210</td> <td>11640</td> </tr> <tr> <td>65</td> <td>13762</td> <td>10665</td> <td>10181</td> </tr> <tr> <td>75</td> <td>10461</td> <td>8469</td> <td>8275</td> </tr> <tr> <td>85</td> <td>5654</td> <td>5775</td> <td>6164</td> </tr> </tbody> </table>	Zone	End	45°	Cross	45	16224	13532	12918	55	15244	12210	11640	65	13762	10665	10181	75	10461	8469	8275	85	5654	5775	6164					
		Angle	End	45	Cross	Back-45																																																																																																						
0	1941	1941	1941	1941																																																																																																								
5	1914	1930	1941	1930																																																																																																								
15	1845	1875	1893	1875																																																																																																								
25	1706	1753	1784	1753																																																																																																								
35	1506	1576	1611	1576																																																																																																								
45	1259	1362	1402	1362																																																																																																								
55	975	1106	1161	1106																																																																																																								
65	665	830	895	830																																																																																																								
75	327	531	608	531																																																																																																								
85	75	264	350	264																																																																																																								
Degrees	Lumens	% Luminaire																																																																																																										
0-30	1520	22.6																																																																																																										
0-40	2503	37.2																																																																																																										
0-60	4518	67.2																																																																																																										
0-90	6130	91.2																																																																																																										
90-180	593	8.8																																																																																																										
0-180	6723	100																																																																																																										
Zone	End	45°	Cross																																																																																																									
45	16224	13532	12918																																																																																																									
55	15244	12210	11640																																																																																																									
65	13762	10665	10181																																																																																																									
75	10461	8469	8275																																																																																																									
85	5654	5775	6164																																																																																																									
<b>Coefficients of Utilization</b> <b>EFFECTIVE FLOOR CAVITY REFLECTANCE 20 PER (pfc=0.20)</b> pfc = 20 <table border="1"> <thead> <tr> <th></th> <th colspan="2">80</th> <th colspan="2">70</th> <th colspan="2">50</th> </tr> <tr> <th>Ceil</th> <th>70</th> <th>50</th> <th>30</th> <th>70</th> <th>30</th> <th>50</th> </tr> <tr> <th>Wall</th> <th>70</th> <th>50</th> <th>30</th> <th>70</th> <th>30</th> <th>50</th> </tr> <tr> <th>RCR</th> <th colspan="6"></th> </tr> </thead> <tbody> <tr> <td>0</td> <td>116</td> <td>116</td> <td>116</td> <td>112</td> <td>112</td> <td>106</td> </tr> <tr> <td>1</td> <td>105</td> <td>100</td> <td>94</td> <td>102</td> <td>96</td> <td>91</td> </tr> <tr> <td>2</td> <td>94</td> <td>86</td> <td>79</td> <td>92</td> <td>83</td> <td>77</td> </tr> <tr> <td>3</td> <td>86</td> <td>76</td> <td>67</td> <td>82</td> <td>72</td> <td>65</td> </tr> <tr> <td>4</td> <td>79</td> <td>67</td> <td>57</td> <td>76</td> <td>65</td> <td>60</td> </tr> <tr> <td>5</td> <td>72</td> <td>58</td> <td>50</td> <td>69</td> <td>57</td> <td>48</td> </tr> <tr> <td>6</td> <td>67</td> <td>53</td> <td>44</td> <td>64</td> <td>52</td> <td>42</td> </tr> <tr> <td>7</td> <td>61</td> <td>47</td> <td>39</td> <td>59</td> <td>46</td> <td>39</td> </tr> <tr> <td>8</td> <td>57</td> <td>44</td> <td>34</td> <td>56</td> <td>42</td> <td>34</td> </tr> <tr> <td>9</td> <td>54</td> <td>40</td> <td>32</td> <td>52</td> <td>39</td> <td>30</td> </tr> <tr> <td>10</td> <td>50</td> <td>36</td> <td>28</td> <td>48</td> <td>35</td> <td>28</td> </tr> </tbody> </table>					80		70		50		Ceil	70	50	30	70	30	50	Wall	70	50	30	70	30	50	RCR							0	116	116	116	112	112	106	1	105	100	94	102	96	91	2	94	86	79	92	83	77	3	86	76	67	82	72	65	4	79	67	57	76	65	60	5	72	58	50	69	57	48	6	67	53	44	64	52	42	7	61	47	39	59	46	39	8	57	44	34	56	42	34	9	54	40	32	52	39	30	10	50	36	28	48	35	28
	80		70		50																																																																																																							
Ceil	70	50	30	70	30	50																																																																																																						
Wall	70	50	30	70	30	50																																																																																																						
RCR																																																																																																												
0	116	116	116	112	112	106																																																																																																						
1	105	100	94	102	96	91																																																																																																						
2	94	86	79	92	83	77																																																																																																						
3	86	76	67	82	72	65																																																																																																						
4	79	67	57	76	65	60																																																																																																						
5	72	58	50	69	57	48																																																																																																						
6	67	53	44	64	52	42																																																																																																						
7	61	47	39	59	46	39																																																																																																						
8	57	44	34	56	42	34																																																																																																						
9	54	40	32	52	39	30																																																																																																						
10	50	36	28	48	35	28																																																																																																						

## Accessories



Accessory Catalog Code	Description
FSTH	Sliding hanger bracket (pair)
SV5F12	12" Stem and canopy kit
SV5F18	18" Stem and canopy kit
SV5F24	24" Stem and canopy kit
SV5F36	36" Stem and canopy kit
SV5F48	48" Stem and canopy kit
FKR-126	Chain hanger set (pair)
DACHxx	Adjustable cable hanger kit (single)
DACHxx-1-SC	Adjustable cable hanger kit with white straight 18/3 cord (single)
DACHxx-1-CC	Adjustable cable hanger kit with white coiled 18/3 cord (single)
DACHxx-2-SC	Adjustable cable hanger kit with white straight 18/4 cord (single)
DACHxx-2-CC	Adjustable cable hanger kit with white coiled 18/4 cord (single)
DACHxx-1D-SC	Adjustable cable hanger kit with white straight 18/5 cord with dimming leads (single)
FSWJ	External continuous row joiner (one per joint).
LSXR10	Low bay pir motion sensor (120-277v)
LSXR10ADC	Low bay pir motion sensor with photocell and hi/lo trim dimming (120-277v)
FSWD2L	2' Diffuse replacement lens
FSWD4L	4' Diffuse replacement lens (order two for 8' models)

White stem and canopy kit, 1/4" trade size (1/2" O.D.) locknuts included. Works with 9/16" k.O. on base of housing.

Includes two 5' heavy duty link chains with "V" hooks. Attaches to base of housing.

Works with 1/4" hole on base of housing or FSTH hanger bracket.

xx=cable length in inches, enter 48" to 180" lengths in 12" increments

FSWJ accessory required for continuous row mounting

The information presented in this document is not intended as any commercial offer and does not form part of any quotation or contract.

