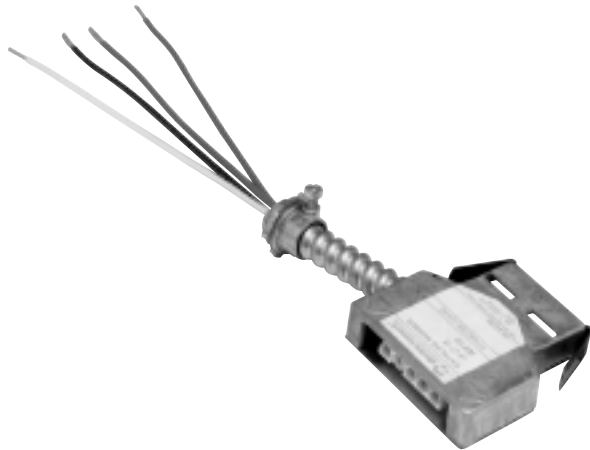


LIGHTING ADAPTERS



SAMPLE CATALOG NUMBER: LA-27-7A-09

LA	
<u>DESIGNATOR</u>	<u>WIRING CONFIGURATION</u>
LA – Lighting Adapter	7M – 2 circuit (A & B tap) 7A – "A" phase tap 7B – "B" phase tap 7C – "C" phase tap 6M – 2 circuit (A & B tap) 18G 7T – 3 circuit (A, B, & C tap)
<u>VOLTAGE</u>	<u>LENGTH</u>
12 – 120v 27 – 277v 34 – 347v	Blank – 3 inches 09 – 09' 15 – 15' 20 – 20'

APPLICATION

- The lighting adapter is the link between the wiring distribution and the luminaire ballast(s).
- It mounts directly to the luminaire body in a standard 1/2" K.O. (7/8" diameter).
- Adapter can be rotated for ease of cable orientation to prevent a strain on the connection.

ELECTRICAL

- UL/cUL listed.

CONSTRUCTION

- Adapter is 2-13/16"x 2-13/16"x 13/16" installed.
- Male (power-in) and female (power-out) configuration.
- Die cast housing with zinc plated steel cover plate.
- Lighting adapters can be wired for single or multi-level use.
- Thru-wired for three circuits.
- Type 6M adapter wires are #18 AWG TFN solid copper conductors, 600 volt.
- Type 7M adapter wires are #12 AWG THHN stranded copper conductors, 600 volt.
- Type 6M and 7M have 6" tap leads.
- Lighting adapter can be factory or field installed.
- 1/2" K.O. connector for mounting to luminaire.

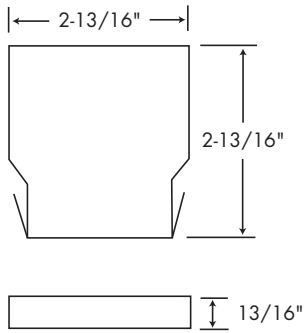
Job Name:

Catalog Number:

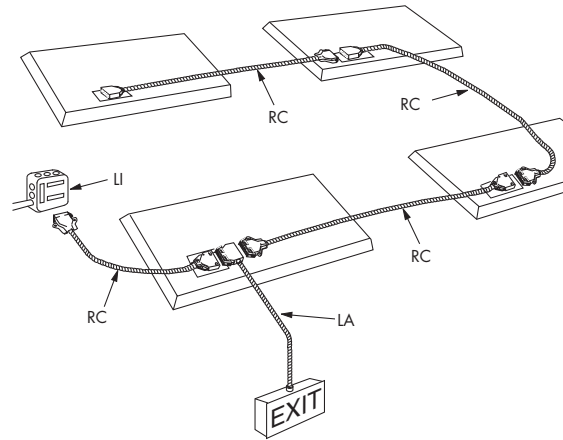
Type:

Notes:

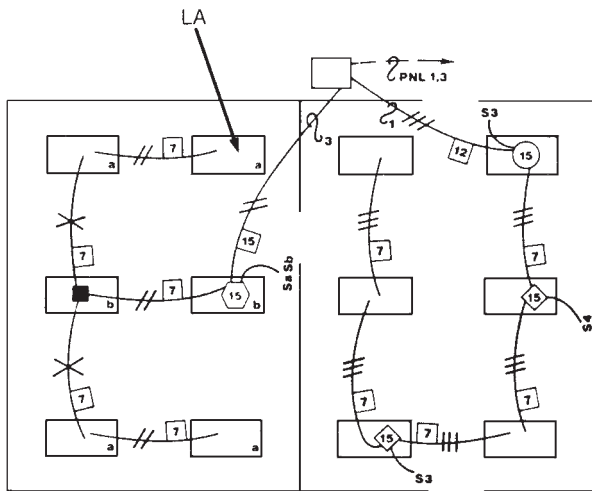
DIMENSIONS



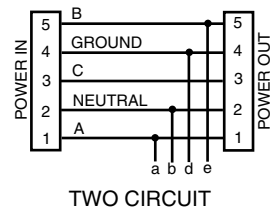
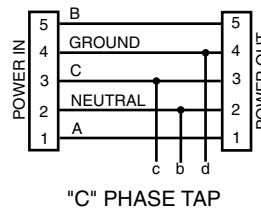
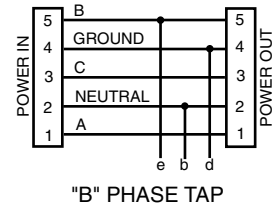
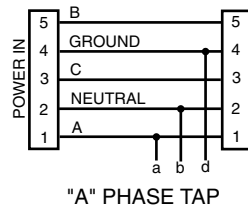
APPLICATION



WIRING



WIRING DIAGRAM



TAPS	LEADS
a	black
b	white
c	blue
d	green
e	red