

# GreenPerform Panel

SPI60P

Mounting Instruction

V1.0

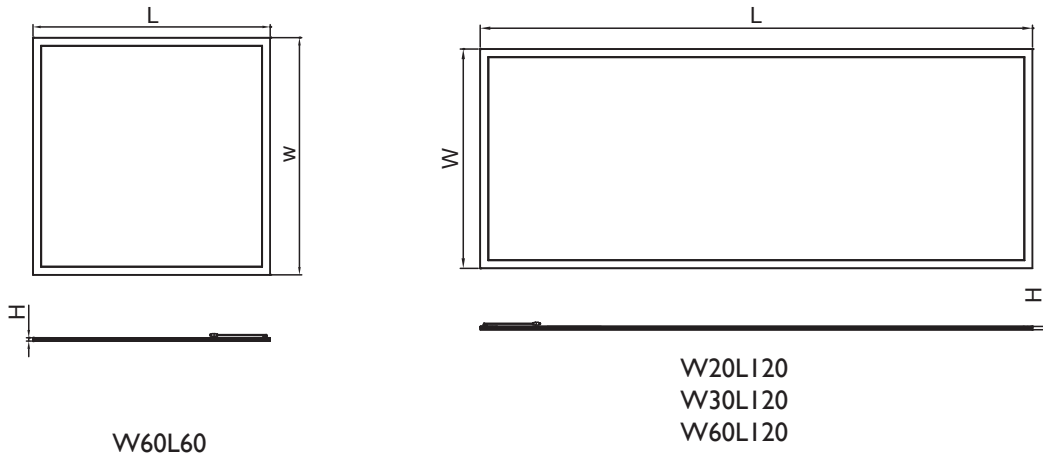
AS/NZS  
60598

IP20

$t_a 25^\circ\text{C}$

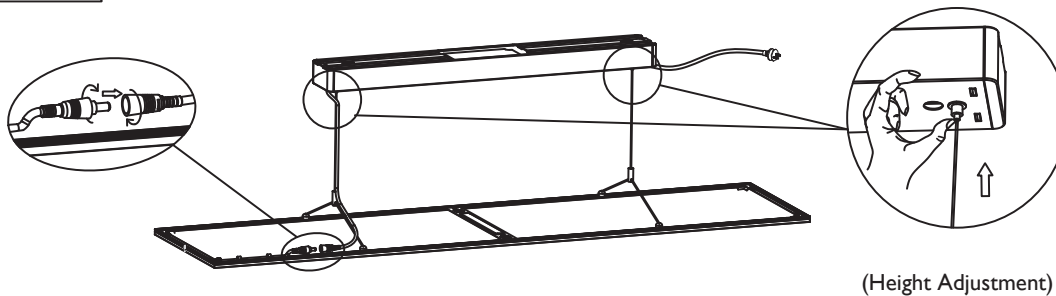


Product Type	CCT (K)	Power (W)	LEDs	Lumen Output (lm)	Dimension / LxWxH (mm)	kg	Voltage	Input Current (mA)	Frequency
SPI60P LED40S 840 W60L60 PSU OC CAU	4000	36	216	4000	597x597x12.5	2.70	220-240V~	170	50/60Hz
SPI60P LED20S 840 W20L120 PSU OC CAU	4000	20	156	2000	1197x202x12.5	2.35		100	
SPI60P LED40S 840 W30L120 PSU OC CAU	4000	36	240	4000	1197x297x12.5	2.75		170	
SPI60P LED60S 840 W60L120 PSU OC CAU	4000	55	384	6000	1195x595x11	5.25		260	
SPI60P LED20S 840 W20L120 PSU OC CD CAU	4000	20	156	2000	1197x202x12.5	2.75		100	

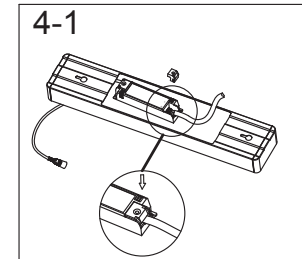
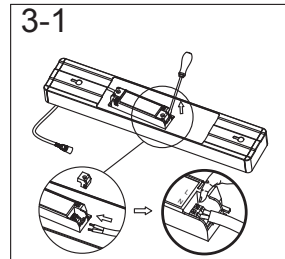
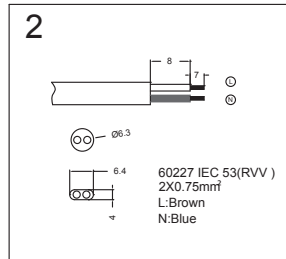
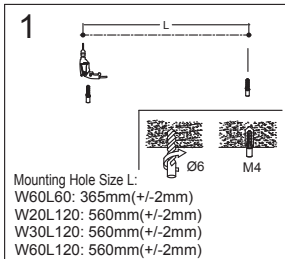


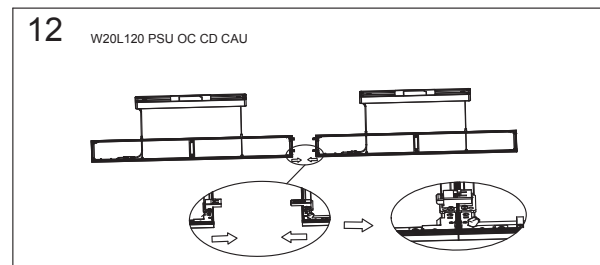
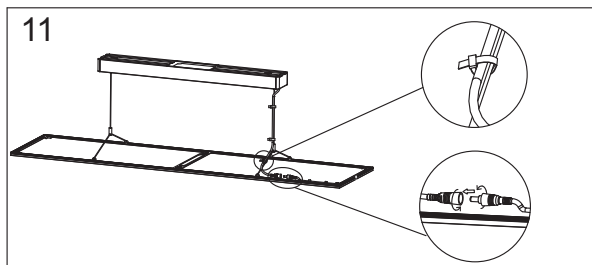
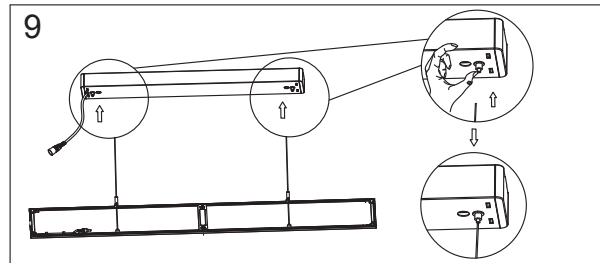
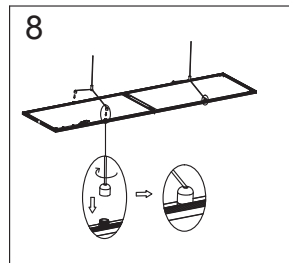
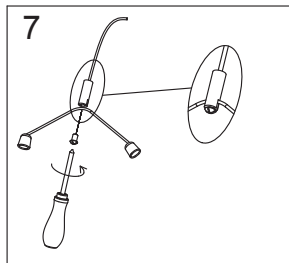
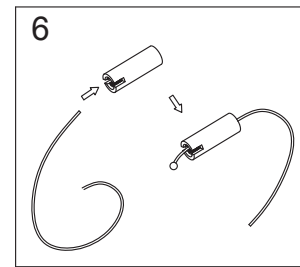
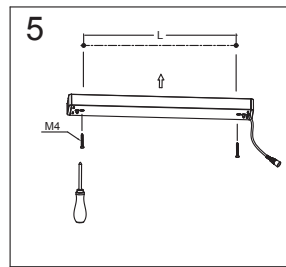
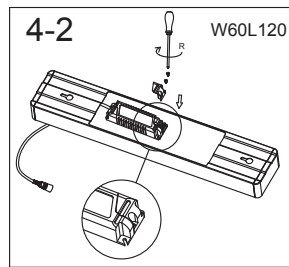
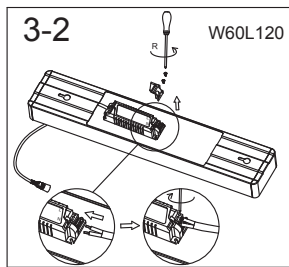
Please do not put any pressure on the back and the driver.

## Wiring Method



## Installation Steps





Model	Run Current (A) (@230V)	Start (Inrush) Current(A) / Ipeak (A)	Start Current Duration ( $\mu$ s) / T(@50% of Ipeak) ( $\mu$ s)	* Touch current or protective conductor current (mA)	Maximum Number of Luminaire on MCB 16A Type B (pcs)	Maximum Number of Luminaire on MCB 16A Type C (pcs)
SPI60P LED40S 840 W60L60 PSU OC CAU	0.176	15.80	181.00	<0.7	30	50
SPI60P LED20S 840 W20L120 PSU OC CAU	0.100	15.40	320.00		23	34
SPI60P LED40S 840 W30L120 PSU OC CAU	0.176	15.80	181.00		30	50
SPI60P LED60S 840 W60L120 PSU OC CAU	0.263	20.60	320.00		20	40
SPI60P LED20S 840 W20L120 PSU OC CD CAU	0.100	15.40	320.00		23	34

The leakage current \*(touch current or protective conductor current) of electrical circuit may be greatly dependent upon electrical supply cables used such as its rating and length, proper connection of electrical supply cables to luminaires and wiring connection topology of luminaires to the supply electrical circuit amongst other site conditions.

\* In some cases referred to as Earth Leakage Current.



Please read this manual carefully before using the product.

1. For indoor use only.
2. Do not switch on before complete installation.
3. The luminaire shall be installed by a qualified electrician and wired in accordance with the latest IEE electrical regulations or the national requirements.
4. The external flexible cable or cord of this luminaire cannot be replaced; if the cord is damaged, the luminaire shall be destroyed.
5. The light source of this luminaire is not replaceable; when the light source reaches its end of life the whole luminaire shall be replaced.
6. Luminaire must not be used or stored in corrosive environment where hazardous materials such as Sulphur, Chlorine, phthalates, etc, are present.
7. The luminaire is complied with AS/NZS 60598.



This marking indicates that this product should not be disposed with other household wastes throughout the EU. To prevent possible harm to the environment or human health from uncontrolled waste disposal, recycle it responsibly to promote the sustainable reuse of material resources. To return your used device, please use the return and collection systems or contact the retailer where the product was purchased. They can take this product for environmental safe recycling.