



Swivel device 9MX056 MAXOS TL- D / TL5

Maxos accessories

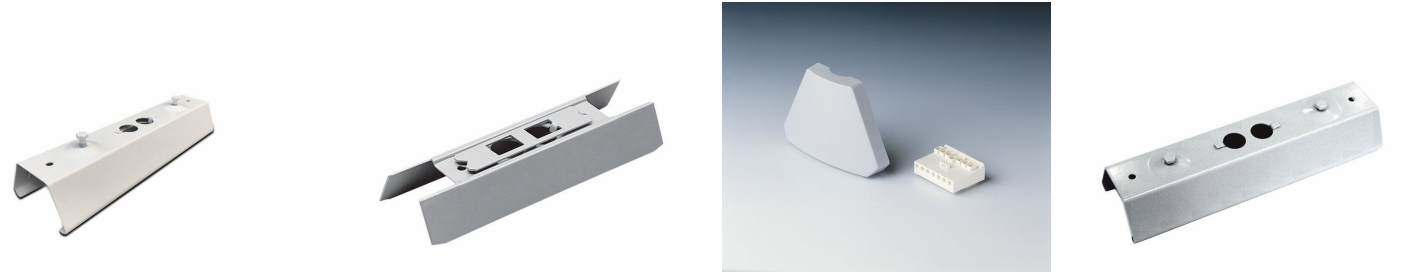
The swivel device is a versatile mechanical connecting device for Maxos TL-D and TL5 light-lines and enables variable angles between the light-lines. The minimum angle is 45 degrees. Due to its attractive design it is often used in application areas such as shops, schools and museums. Up to four light-lines can be connected with one swivel device. The housing is made of plastic, with a white or silver coating, and with inner supporting elements made of steel. If needed, the swivel device can accommodate lighting control sensors, loudspeakers, etc. It is pre-mounted with an adjustable quick hanger with a 1.25m steel suspension wire. One dedicated coupling piece (9MX056 CP-SD WH/SI) per trunking section is necessary to connect the trunking to the swivel device. Electrical components for mains feed-through have to be ordered as required.

Benefits

- –

Maxos accessories

Versions



9MX056 CP WH

9MX056 CPI

Maxos_end_pieces_electrical_connector

9MX056 CP SI

Product details



Maxos 4MX056 TL-D extended trunking section M300/E300/M600/E600 and blind cover, used to close the spaces in the trunking where no electrical units are mounted

| General Information | |
|--------------------------|--------|
| Product family code | 9MX056 |
| Product family code | 9MX056 |
| Approval and Application | |
| Ingress protection code | - |
| Ingress protection code | - |

General Information

| Order Code | Full Product Name | Accessory colour |
|------------|-------------------|------------------|
| 10807700 | 9MX056 CP WH | White |
| 60157899 | 9MX056 BC49 WH | White |
| 60158599 | 9MX056 BC49 SI | Silver |
| 53881299 | 9MX056 BC58 WH | White |
| 13179200 | 9MX056 EC7 | - |

| Order Code | Full Product Name | Accessory colour |
|------------|--------------------|------------------|
| 03217400 | 9MX056 EC7 (10PCS) | - |
| 10809100 | 9MX056 CPI | - |
| 10824400 | 9MX056 EP WH SET | White |
| 10808400 | 9MX056 CP SI | Silver |

Operating and Electrical

| Order Code | Full Product Name | Input Voltage | Input Voltage | Line Frequency | Line Frequency |
|------------|-------------------|---------------|---------------|----------------|----------------|
| 10807700 | 9MX056 CP WH | - | - | - | - |

| Order Code | Full Product Name | Input Voltage | Input Voltage | Line Frequency | Line Frequency |
|------------|-------------------|---------------|---------------|----------------|----------------|
| 60157899 | 9MX056 BC49 WH | - | - | - | - |

Maxos accessories

| Order Code | Full Product Name | Input Voltage | Input Voltage | Line Frequency | Line Frequency |
|------------|-------------------|---------------|---------------|----------------|----------------|
| 60158599 | 9MX056 BC49 SI | - | - | - | - |
| 53881299 | 9MX056 BC58 WH | - | - | - | - |
| 13179200 | 9MX056 EC7 | 220 to 240 V | 220 to 240 V | 50 to 60 Hz | 50 to 60 Hz |

| Order Code | Full Product Name | Input Voltage | Input Voltage | Line Frequency | Line Frequency |
|------------|--------------------|---------------|---------------|----------------|----------------|
| 03217400 | 9MX056 EC7 (10PCS) | 220 to 240 V | 220 to 240 V | 50 to 60 Hz | 50 to 60 Hz |
| 10809100 | 9MX056 CPI | - | - | - | - |
| 10824400 | 9MX056 EP WH SET | - | - | - | - |
| 10808400 | 9MX056 CP SI | - | - | - | - |

Approval and Application

| Order Code | Full Product Name | Protection class IEC | Protection class IEC |
|------------|-------------------|----------------------|----------------------|
| 10807700 | 9MX056 CP WH | - | - |
| 60157899 | 9MX056 BC49 WH | - | - |
| 60158599 | 9MX056 BC49 SI | - | - |
| 53881299 | 9MX056 BC58 WH | - | - |
| 13179200 | 9MX056 EC7 | Safety class I | Safety class I |

| Order Code | Full Product Name | Protection class IEC | Protection class IEC |
|------------|--------------------|----------------------|----------------------|
| 03217400 | 9MX056 EC7 (10PCS) | Safety class I | Safety class I |
| 10809100 | 9MX056 CPI | - | - |
| 10824400 | 9MX056 EP WH SET | - | - |
| 10808400 | 9MX056 CP SI | - | - |

