



# AmphiLux recessed – light up your outdoor social areas

## AmphiLux, recessed

People want to spend more quality time outdoors with family and friends. The AmphiLux recessed spotlight range is designed to enhance outdoor social areas (gardens, terraces, fountains, waterfalls, etc.) with architectural lighting. AmphiLux is a family of LED spots featuring a stunning, sleek Italian design with a stylish chrome finish. These solutions can be used under water and in semi-wet and dry environments. Available in Micro, Mini and Compact sizes, the range offers a choice of dynamic white-light and colored-light versions for maximum flexibility in tasteful flood and accent lighting.

### Benefits

- All mono-color products are powered via a standard 12 V DC driver, making them safe in human-occupied water and extremely easy to install.
- The dynamic color spots provide a rich color spectrum (RGBW), from fully saturated to soft pastel colors; the color-temperature-variation spots create a variety of white tones.
- The use of LEDs and quality optics make the AmphiLux spots very energy-efficient, with energy savings of up to 80% possible, depending on the application.

### Features

- Sleek, attractive design
- Highly efficient, low-power LED spots
- Every spot available in the mono-colors high-quality white (2700, 4000, 6000 K) and blue
- Mini and Compact spots also available in dynamic versions with RGBW or color-temperature variation
- IP68-rated for underwater use, but also suitable for dry environments
- Very installation-friendly due to 12 V DC driver system for all mono-color spots

# AmphiLux, recessed

## Application

- Architectural flood and accent lighting in fountains, waterfalls, gardens or on buildings

## Specifications

<b>Type</b>	BBD400 Micro (1 x LED, Mono color version)
	BBC400 Micro (1 x LED, Mono color version)*
	BBD410 Mini (4 x LED, Mono and Dynamic color version)
	BBD420 Compact (12 x LED, Mono and Dynamic color version)
	*special plastic version for harsh environments
<b>Light source</b>	Non replaceable LED-module
<b>Power</b>	Micro versions: 1.5 W
	Mini version (Mono color): 5 W
	Mini version (Dynamic color): 4 W
	Compact version (Mono color): 15 W
	Compact version (Dynamic color): 12 W
<b>Beam angle</b>	Micro versions: 10, 20 and 35°
	Mini and Compact versions: 10 and 40°
<b>Luminous flux</b>	Micro versions: +/- 60 lm
	Mini version: +/- 240 lm
	Compact version: +/- 720 lm
<b>Correlated Color Temperature</b>	2700, 4000 and 6000 K for the Mono color versions
<b>Color Rendering Index</b>	2700 - 6000 K for tunable white
	> 80 (2700 and 4000 K)
	> 70 (6000 K)
<b>Maintenance of lumen output - L90</b>	43.000 hours at 35°C
<b>Maintenance of lumen output - L70</b>	147.000 hours at 35°C

<b>Maintenance of lumen output - L50</b>	> 200.000 hours at 35°C
<b>Operating temperature range</b>	-20 to +35°C
<b>Driver</b>	Built-in for Mono color versions
	External (DMX-RDM driver) for Dynamic color versions
<b>Mains voltage</b>	12 V DC for Mono color versions
<b>Material</b>	Housing:
	- BBD versions: chromed brass
	- BBC version: ertacetal
	Optical cover: hardened glass
<b>Corrosion resistance</b>	For BBD versions:
	- Salt water resistant up to 35gr/L salinity
	- Chlorine resistant if water has a stable PH level between 6.8 and 8
	- If these levels are exceeded, use the BBC range of products
<b>Color</b>	BBD versions: chrome
	BBC versions: white
<b>Connection</b>	Flying leads
<b>Installation</b>	Recessed mounting. For inground (concrete etc.) use the matching ZBD400 RMB recessed box
<b>Accessories</b>	Recessed box, ZBD400 RMB

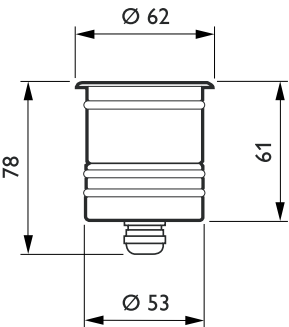
## Versions



AmphiLux BBD410 recessed Mini  
spotlight with narrow or medium beam  
angle

AmphiLux, recessed

Dimensional drawing

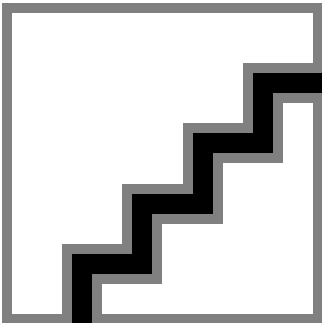


AmphiLux BBD/BVD400

AmphiLux BBD/BVD400

AmphiLux BBD/BVD400

Product details



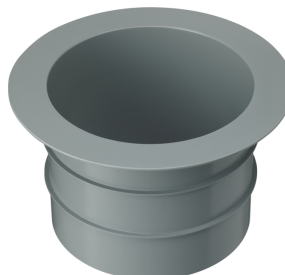
## AmphiLux, recessed

### Accessories



Recessed mounting box for  
AmphiLux BBC410

Ordercode 910930027818



Recessed mounting box for  
AmphiLux BBD420

Ordercode 910930027918



ZBD408 power supply unit DMX/RDM  
2 x 4 channels

Ordercode 910930028018

#### Approval and Application

Mech. Impact protection code	IK10
------------------------------	------

#### Controls and Dimming

Dimmable	No
----------	----

#### General Information

CE mark	CE mark
---------	---------

Optical cover/lens type	No
-------------------------	----

Driver included	No
-----------------	----

Lamp family code	LED-HB
------------------	--------

Light source replaceable	No
--------------------------	----

Lifetime to 50% luminous flux	200000
-------------------------------	--------

Lifetime to 70% luminous flux	147000
-------------------------------	--------

Lifetime to 90% luminous flux	43000
-------------------------------	-------

#### Over Time Performance (IEC Compliant)

Driver failure rate at 5000 h	1
-------------------------------	---

#### General Information

order code	Light source color	Number of light sources	Optic type	Product Family Code
910503673918	Warm white	1	Medium beam angle 35°	BBD400
910503683018	Warm white	4	Narrow beam angle 10°	BBD410
910503683118	Warm white	4	Medium beam angle 40°	BBD410
910503683218	Neutral white	4	Narrow beam angle 10°	BBD410
910503683318	Neutral white	4	Medium beam angle 40°	BBD410
910503683718	Blue	4	Medium beam angle 40°	BBD410
910503686118	Warm white	12	Medium beam angle 40°	BBD420

#### Initial Performance (IEC Compliant)

order code	Init. Corr. Color Temperature	Init. Color Rendering Index	Initial luminous flux
910503673918	2700 K	80	55
910503683018	2700 K	80	220
910503683118	2700 K	80	220
910503683218	4000 K	80	240

order code	Init. Corr. Color Temperature	Init. Color Rendering Index	Initial luminous flux
910503683318	4000 K	80	240
910503683718	-	-	54
910503686118	2700 K	80	660

AmphiLux, recessed

