



AmphiLux recessed – light up your outdoor social areas

AmphiLux, recessed

People want to spend more quality time outdoors with family and friends. The AmphiLux recessed spotlight range is designed to enhance outdoor social areas (gardens, terraces, fountains, waterfalls, etc.) with architectural lighting. AmphiLux is a family of LED spots featuring a stunning, sleek Italian design with a stylish chrome finish. These solutions can be used under water and in semi-wet and dry environments. Available in Micro, Mini and Compact sizes, the range offers a choice of dynamic white-light and colored-light versions for maximum flexibility in tasteful flood and accent lighting.

Benefits

- All mono-color products are powered via a standard 12 V DC driver, making them safe in human-occupied water and extremely easy to install.
- The dynamic color spots provide a rich color spectrum (RGBW), from fully saturated to soft pastel colors; the color-temperature-variation spots create a variety of white tones.
- The use of LEDs and quality optics make the AmphiLux spots very energy-efficient, with energy savings of up to 80% possible, depending on the application.

Features

- Sleek, attractive design
- Highly efficient, low-power LED spots
- Every spot available in the mono-colors high-quality white (2700, 4000, 6000 K) and blue
- Mini and Compact spots also available in dynamic versions with RGBW or color-temperature variation
- IP68-rated for underwater use, but also suitable for dry environments
- Very installation-friendly due to 12 V DC driver system for all mono-color spots

AmphiLux, recessed

Application

- Architectural flood and accent lighting in fountains, waterfalls, gardens or on buildings

Specifications

Type	BBD400 Micro (1 x LED, Mono color version)
	BBC400 Micro (1 x LED, Mono color version)*
	BBD410 Mini (4 x LED, Mono and Dynamic color version)
	BBD420 Compact (12 x LED, Mono and Dynamic color version)
	*special plastic version for harsh environments
Light source	Non replaceable LED-module
Power	Micro versions: 1.5 W
	Mini version (Mono color): 5 W
	Mini version (Dynamic color): 4 W
	Compact version (Mono color): 15 W
	Compact version (Dynamic color): 12 W
Beam angle	Micro versions: 10, 20 and 35°
	Mini and Compact versions: 10 and 40°
Luminous flux	Micro versions: +/- 60 lm
	Mini version: +/- 240 lm
	Compact version: +/- 720 lm
Correlated Color Temperature	2700, 4000 and 6000 K for the Mono color versions
Color Rendering Index	2700 - 6000 K for tunable white
	> 80 (2700 and 4000 K)
	> 70 (6000 K)
Maintenance of lumen output - L90	43.000 hours at 35°C
Maintenance of lumen output - L70	147.000 hours at 35°C

Maintenance of lumen output - L50	> 200.000 hours at 35°C
Operating temperature range	-20 to +35°C
Driver	Built-in for Mono color versions
	External (DMX-RDM driver) for Dynamic color versions
Mains voltage	12 V DC for Mono color versions
Material	Housing:
	- BBD versions: chromed brass
	- BBC version: ertacetal
	Optical cover: hardened glass
Corrosion resistance	For BBD versions:
	- Salt water resistant up to 35gr/L salinity
	- Chlorine resistant if water has a stable PH level between 6.8 and 8
	- If these levels are exceeded, use the BBC range of products
Color	BBD versions: chrome
	BBC versions: white
Connection	Flying leads
Installation	Recessed mounting. For inground (concrete etc.) use the matching ZBD400 RMB recessed box
Accessories	Recessed box, ZBD400 RMB

Versions



AmphiLux BBD410 recessed Mini spotlight with narrow or medium beam angle and opal cover

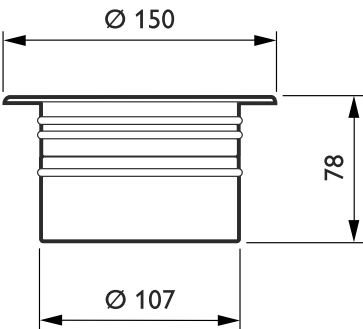


AmphiLux BBD420 recessed Compact spotlight with narrow or medium beam angle

AmphiLux, recessed

Dimensional drawing

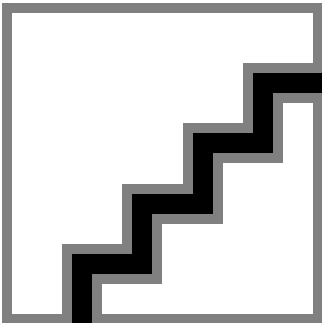
AmphiLux BBD/BVD400



AmphiLux BBD/BVD400

AmphiLux BBD/BVD400

Product details



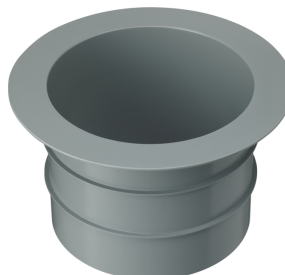
AmphiLux, recessed

Accessories



Recessed mounting box for
AmphiLux BBC410

Ordercode 910930027818



Recessed mounting box for
AmphiLux BBD420

Ordercode 910930027918

Approval and Application

Mech. impact protection code IK10

Controls and Dimming

Dimmable No

General Information

CE mark CE mark

Light source color Warm white

Driver included No

Lamp family code LED-HB

Light source replaceable No

Lifetime to 50% luminous flux 200000

Lifetime to 70% luminous flux 147000

Lifetime to 90% luminous flux 43000

Initial Performance (IEC Compliant)

Init. Corr. Color Temperature 2700 K

Init. Color Rendering Index 80

Over Time Performance (IEC Compliant)

Driver failure rate at 5000 h 1

General Information

order code	Optical cover/lens type	Number of light sources	Optic type	Product Family Code
910503673118	No	1	Narrow beam angle 10°	BBD400
910503673518	No	1	Medium beam angle 20°	BBD400
910503673918	No	1	Medium beam angle 35°	BBD400
910503675518	OB	1	-	BBD400
910503683118	No	4	Medium beam angle 40°	BBD410
910503684218	OB	4	-	BBD410
910503686018	No	12	Narrow beam angle 10°	BBD420
910503686118	No	12	Medium beam angle 40°	BBD420

Initial Performance (IEC Compliant)

order code	Initial luminous flux
910503673118	55
910503673518	55
910503673918	55
910503675518	55

order code	Initial luminous flux
910503683118	220
910503684218	140
910503686018	660
910503686118	660

AmphiLux, recessed

