



LuxSpace surface-mounted – high efficiency, visual comfort and a stylish design

LuxSpace, surface mounted

Customers are looking to optimize all their resources, and that means not just their running costs (energy, etc.) but also their human resources. Energy savings are therefore a priority, but they must not have an adverse effect on the well-being of employees, who need a pleasant environment in order to be more productive, or on customers, who want to enjoy their shopping experience. LuxSpace provides the perfect combination of efficiency, light comfort and design, without compromising on lighting performance (color rendering and color uniformity). It offers a wide choice of options for creating the desired ambience, no matter the application.

Benefits

- Best-in-class efficacy
- Creates a gentle, natural light, ensuring visual comfort

LuxSpace, surface mounted

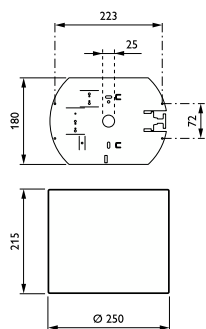
Features

- Choice of four optics: high-gloss, faceted, matt and white
- Heights: deep (up to UGR 19), low (up to UGR 22)
- Color temperature: 3000 or 4000 K
- Colors: high-gloss metalized, white (RAL9010), grey, black (RAL9005) as standard (any other RAL color possible upon request)
- Recessed version available
- Compliant for central emergency lighting with DC
- 3C track version (upon request)
- Multiple additional options: PG and PGO, suspended deco glass

Application

- Offices
- Retail
- Hospitals
- Hotels
- Airports

Dimensional drawing



LuxSpace, surface mounted

General Information

CE mark	Yes
Driver included	Yes
ENEC mark	ENEC mark
Flammability mark	For mounting on normally flammable surfaces
Glow-wire test	Temperature 850 °C, duration 5 s
Light source replaceable	No
Number of gear units	1 unit
Service tag	Yes

Light Technical

Color rendering index (CRI)	>80
Optic type	-

Operating and Electrical

Input Voltage	220 to 240 V
Line Frequency	50 to 60 Hz

Temperature

Ambient temperature range	+10 to +25 °C
---------------------------	---------------

Mechanical and Housing

Housing Color	White
---------------	-------

Approval and Application

Protection class IEC	Safety class I
Mech. impact protection code	IK02
Ingress protection code	IP20

Initial Performance (IEC Compliant)

Luminous flux tolerance	+/-10%
-------------------------	--------

Application Conditions

Suitable for random switching	Yes
-------------------------------	-----

General Information

Order Code	Full Product Name	Product family code
97088800	DN570C LED20S/830 PSU-E C WH	DN570C
97089500	DN570C LED20S/840 PSU-E C WH	DN570C
97090100	DN571C LED20S/830 PSU-E C WH	DN571C
97092500	DN570C LED20S/830 DIA-VLC-E C WH	DN570C
97093200	DN570C LED20S/840 DIA-VLC-E C WH	DN570C
97094900	DN571C LED20S/830 DIA-VLC-E C WH	DN571C
97095600	DN571C LED20S/840 DIA-VLC-E C WH	DN571C
97096300	DN570C LED24S/830 PSU-E C WH	DN570C
97097000	DN570C LED24S/840 PSU-E C WH	DN570C
97101400	DN571C LED24S/840 DIA-VLC-E C WH	DN571C
97102100	DN570C LED40S/830 PSU-E C WH	DN570C
97103800	DN570C LED40S/840 PSU-E C WH	DN570C
97104500	DN570C LED40S/830 DIA-VLC-E C WH	DN570C
97105200	DN570C LED40S/840 DIA-VLC-E C WH	DN570C

Light Technical

Order Code	Full Product Name	Correlated Color Temperature (Nom)	Luminous Efficacy (rated) (Nom)	Luminous Flux
97088800	DN570C LED20S/830 PSU-E C WH	3000 K	134 lm/W	2,200 lm
97089500	DN570C LED20S/840 PSU-E C WH	4000 K	149 lm/W	2,200 lm
97090100	DN571C LED20S/830 PSU-E C WH	3000 K	134 lm/W	2,200 lm
97092500	DN570C LED20S/830 DIA-VLC-E C WH	3000 K	134 lm/W	2,200 lm

Order Code	Full Product Name	Correlated Color Temperature (Nom)	Luminous Efficacy (rated) (Nom)	Luminous Flux
97093200	DN570C LED20S/840 DIA-VLC-E C WH	4000 K	149 lm/W	2,200 lm
97094900	DN571C LED20S/830 DIA-VLC-E C WH	3000 K	134 lm/W	2,200 lm
97095600	DN571C LED20S/840 DIA-VLC-E C WH	4000 K	149 lm/W	2,200 lm
97096300	DN570C LED24S/830 PSU-E C WH	3000 K	130 lm/W	2,600 lm

LuxSpace, surface mounted

Order Code	Full Product Name	Correlated Color	Luminous	Luminous
		Temperature	Efficacy (rated)	
		(Nom)	(Nom)	Flux
97097000	DN570C LED24S/840 PSU-E C WH	4000 K	141 lm/W	2,600 lm
97101400	DN571C LED24S/840 DIA-VLC-E C WH	4000 K	141 lm/W	2,600 lm
97102100	DN570C LED40S/830 PSU-E C WH	3000 K	133 lm/W	4,400 lm

Order Code	Full Product Name	Correlated Color	Luminous	Luminous
		Temperature	Efficacy (rated)	
		(Nom)	(Nom)	Flux
97103800	DN570C LED40S/840 PSU-E C WH	4000 K	147 lm/W	4,400 lm
97104500	DN570C LED40S/830 DIA-VLC-E C WH	3000 K	133 lm/W	4,400 lm
97105200	DN570C LED40S/840 DIA-VLC-E C WH	4000 K	147 lm/W	4,400 lm

Operating and Electrical

Order Code	Full Product Name	Power Consumption
97088800	DN570C LED20S/830 PSU-E C WH	16.4 W
97089500	DN570C LED20S/840 PSU-E C WH	14.8 W
97090100	DN571C LED20S/830 PSU-E C WH	16.4 W
97092500	DN570C LED20S/830 DIA-VLC-E C WH	16.4 W
97093200	DN570C LED20S/840 DIA-VLC-E C WH	14.8 W
97094900	DN571C LED20S/830 DIA-VLC-E C WH	16.4 W
97095600	DN571C LED20S/840 DIA-VLC-E C WH	14.8 W

Order Code	Full Product Name	Power Consumption
97096300	DN570C LED24S/830 PSU-E C WH	20 W
97097000	DN570C LED24S/840 PSU-E C WH	18.4 W
97101400	DN571C LED24S/840 DIA-VLC-E C WH	18.4 W
97102100	DN570C LED40S/830 PSU-E C WH	33 W
97103800	DN570C LED40S/840 PSU-E C WH	30 W
97104500	DN570C LED40S/830 DIA-VLC-E C WH	33 W
97105200	DN570C LED40S/840 DIA-VLC-E C WH	30 W

Controls and Dimming

Order Code	Full Product Name	Dimmable
97088800	DN570C LED20S/830 PSU-E C WH	No
97089500	DN570C LED20S/840 PSU-E C WH	No
97090100	DN571C LED20S/830 PSU-E C WH	No
97092500	DN570C LED20S/830 DIA-VLC-E C WH	Yes
97093200	DN570C LED20S/840 DIA-VLC-E C WH	Yes
97094900	DN571C LED20S/830 DIA-VLC-E C WH	Yes
97095600	DN571C LED20S/840 DIA-VLC-E C WH	Yes

Order Code	Full Product Name	Dimmable
97096300	DN570C LED24S/830 PSU-E C WH	No
97097000	DN570C LED24S/840 PSU-E C WH	No
97101400	DN571C LED24S/840 DIA-VLC-E C WH	Yes
97102100	DN570C LED40S/830 PSU-E C WH	No
97103800	DN570C LED40S/840 PSU-E C WH	No
97104500	DN570C LED40S/830 DIA-VLC-E C WH	Yes
97105200	DN570C LED40S/840 DIA-VLC-E C WH	Yes

Initial Performance (IEC Compliant)

Order Code	Full Product Name	Initial chromaticity
97088800	DN570C LED20S/830 PSU-E C WH	(0.43, 0.40) SDCM <2
97089500	DN570C LED20S/840 PSU-E C WH	(0.38, 0.38) SDCM <2
97090100	DN571C LED20S/830 PSU-E C WH	(0.43, 0.40) SDCM <2
97092500	DN570C LED20S/830 DIA-VLC-E C WH	(0.43, 0.40) SDCM <2
97093200	DN570C LED20S/840 DIA-VLC-E C WH	(0.38, 0.38) SDCM <2
97094900	DN571C LED20S/830 DIA-VLC-E C WH	(0.43, 0.40) SDCM <2
97095600	DN571C LED20S/840 DIA-VLC-E C WH	(0.38, 0.38) SDCM <2

Order Code	Full Product Name	Initial chromaticity
97096300	DN570C LED24S/830 PSU-E C WH	(0.43, 0.40) SDCM <2
97097000	DN570C LED24S/840 PSU-E C WH	(0.38, 0.38) SDCM <2
97101400	DN571C LED24S/840 DIA-VLC-E C WH	(0.38, 0.38) SDCM <2
97102100	DN570C LED40S/830 PSU-E C WH	(0.43, 0.40) SDCM <2
97103800	DN570C LED40S/840 PSU-E C WH	(0.38, 0.38) SDCM <2
97104500	DN570C LED40S/830 DIA-VLC-E C WH	(0.43, 0.40) SDCM <2
97105200	DN570C LED40S/840 DIA-VLC-E C WH	(0.38, 0.38) SDCM <2

Application Conditions

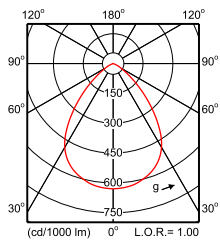
Order Code	Full Product Name	Maximum dim level
97088800	DN570C LED20S/830 PSU-E C WH	-
97089500	DN570C LED20S/840 PSU-E C WH	-
97090100	DN571C LED20S/830 PSU-E C WH	-
97092500	DN570C LED20S/830 DIA-VLC-E C WH	1%
97093200	DN570C LED20S/840 DIA-VLC-E C WH	1%
97094900	DN571C LED20S/830 DIA-VLC-E C WH	1%

Order Code	Full Product Name	Maximum dim level
97095600	DN571C LED20S/840 DIA-VLC-E C WH	1%
97096300	DN570C LED24S/830 PSU-E C WH	-
97097000	DN570C LED24S/840 PSU-E C WH	-
97101400	DN571C LED24S/840 DIA-VLC-E C WH	1%
97102100	DN570C LED40S/830 PSU-E C WH	-
97103800	DN570C LED40S/840 PSU-E C WH	-

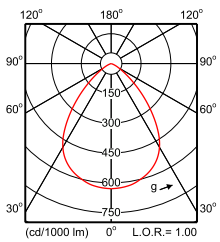
Order Code	Full Product Name	Maximum dim level
97104500	DN570C LED40S/830 DIA-VLC-E C WH	1%

Order Code	Full Product Name	Maximum dim level
97105200	DN570C LED40S/840 DIA-VLC-E C WH	1%

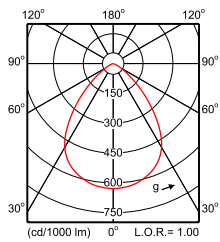
Polar Wide Diagrams



IFPS_DN570C PSE-E 1xLED20S/830 C-Polar
Normal (separate)



IFPS_DN570C PSE-E 1xLED20S/840 C-Polar
Normal (separate)



IFPS_DN570C PSE-E 1xLED24S/840 C-Polar
Normal (separate)

