



Iridium gen3 – The connected intelligent ‘plug & play’ road luminaire

Iridium gen3 LED Mini

Iridium gen3 is the first truly intelligent luminaire designed for seamless connectivity. No hassle in commissioning – just install the luminaire and control it from a distance through CityTouch management software. Remote light management made easy! The new ‘plug & play’ concept has been designed to ensure safe and easy installation in just three steps: 1. Install the spigot, 2. Plug in the mains, 3. Tilt and close the luminaire. The luminaire’s high efficiency at system level ensures significant energy savings compared to existing conventional installations, offering a fast payback. Thanks to its wide choice of lumen packages, optics and colour temperatures, Iridium gen3 fits most applications in residential areas. The luminaire’s neo-classical design guarantees a consistent look and feel for your surroundings.

Benefits

Features

Application

Specifications

Type	BGP381
Light source	Integral LED-module
Power	9 to 36 W depending on LED configuration
Luminous flux	1020 to 4021 lm
Luminaire efficacy	100 to 126 lm/W

Correlated Colour	3,000 K (warm white)
Temperature	4,000 K (neutral white)
Colour Rendering Index	≥ 80 (warm white)
	≥ 70 (neutral white)

Iridium gen3 LED Mini

Lumen maintenance at median useful life* 100,000 h	min L80	Optic	Medium wide street optic (MSO), wide street optic (WSO), road wet optic (DK)
Control gear failure rate at median useful life 100,000 h	10%	Material	Housing: high pressure die-cast aluminium Cover: polycarbonate, flat
Performance Ambient Temperature Tq	+25 °C	Colour	Aluminium or grey Other RAL or AKZO colours available on request
Operating temperature range	-30 to +35 °C	Connection	Push-in connector with 3 poles
Driver	Built-in (self ballasted LED-module)	Maintenance	Possibility to open with screw to replace driver and LED module
Mains voltage	220-240 V / 50-60 Hz	Installation	Post top: 60 or 76 mm Side entry: 42 or 60 mm Recommended mounting height: 4 m Standard tilt angle post top: 0, 5 and 10° Adjustable tilt angle: 0, -5 and -10°
Dimming	Dimmable versions available	SR compatibility	For SR-based luminaires only SR-Certified components/sensors are to be used (see also: http://www.lighting.philips.co.uk/oem-emea/products/driving-connected-lighting). Functional compatibility of 2 (SR-certified) components/sensors to be used in combination as well as to override the possibility of any lineswitch function used in an SR-based luminaire, is to be released by the master component/sensor supplier. For the use of a NEMA 7-pin socket on an SR-based luminaire, a full-system verification is required. Not following this advice can/will cause risk of damage and non-compliance for which Signify cannot take any responsibility.
Control system input	1-10 V and DALI		
Options	Dimming LumiStep 6, 8 hrs DynaDimmer Constant Light Output (CLO) SDU 1-10 V DALI RF regulation Mains dimming Nema socket Photocell: mini cell 35, 55, 75 Lux Fuse Cable: 3, 4, 5, 6 m Surge protection		

Versions

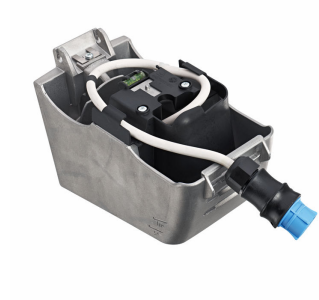


Iridium gen3 Mini BGP381 road-lighting luminaire

Iridium gen3 LED Mini

Product details

OPDP_BGP381i_0001-Detail
photo



Iridium gen3 LED Mini

Application Conditions

Maximum dim level	Not applicable
-------------------	----------------

Approval and Application

Mech. impact protection code	IK09
Surge Protection (Common/Differential)	4/4 kV

Controls and Dimming

Dimmable	No
----------	----

General Information

Luminaire light beam spread	152°
CE mark	CE mark
Parts colour	Cover painted
Coating	-
Light source colour	740 neutral white
Optical cover/lens type	PC
Driver included	Yes
Flammability mark	NO
Gear	EB
Glow-wire test	Temperature 650 °C, duration 5 s
Light source replaceable	Yes
Number of gear units	1 unit
Number of light sources	1
Optic type	Medium wide street optic
Product Family Code	BGP381
UL mark	No

Initial Performance (IEC Compliant)

Init. Corr. Colour Temperature	4000 K
Init. Colour Rendering Index	70

Light Technical

Standard tilt angle side entry	0°
Standard tilt angle posttop	0°
Upward light output ratio	0

Mechanical and Housing

Colour	Grey
--------	------

Operating and Electrical

Order Code	Full Product Name	Driver current
90803600	BGP381 GRN11/740 I MSO CO GR SP	300 mA
90807400	BGP381 GRN15/740 I MSO CO GR SP	440 mA
90819700	BGP381 GRN30/740 I MSO CO GR SP	440 mA
90823400	BGP381 GRN40/740 I MSO CO GR SP	610 mA
90824100	BGP381 GRN45/740 I MSO CO GR SP	690 mA

General Information

Order Code	Full Product Name	Lamp family code
90803600	BGP381 GRN11/740 I MSO CO GR SP	GRN11
90807400	BGP381 GRN15/740 I MSO CO GR SP	GRN15
90819700	BGP381 GRN30/740 I MSO CO GR SP	GRN30

Order Code	Full Product Name	Lamp family code
90823400	BGP381 GRN40/740 I MSO CO GR SP	GRN40
90824100	BGP381 GRN45/740 I MSO CO GR SP	GRN45

Initial Performance (IEC Compliant)

Iridium gen3 LED Mini

Order Code	Full Product Name	Initial luminous flux
90803600	BGP381 GRN11/740 I MSO CO GR SP	1045 lm
90807400	BGP381 GRN15/740 I MSO CO GR SP	1425 lm
90819700	BGP381 GRN30/740 I MSO CO GR SP	2820 lm

Order Code	Full Product Name	Initial luminous flux
90823400	BGP381 GRN40/740 I MSO CO GR SP	3760 lm
90824100	BGP381 GRN45/740 I MSO CO GR SP	4230 lm

