



Philips CitySwan LED Gen3: distinctive and elegant

CitySwan LED gen3

The beautiful Philips CitySwan LED Gen3 luminaire was designed by Danish architects Bjarne Schläger and Morten Weeke Borup. The simple shape is designed around an ellipse. With minimal materials, clean lines and a white opal 'lampshade', CitySwan LED Gen3 offers discreet, yet visible, presence in any city environment. At night, patented glowing light technology highlights the design of the luminaire and illuminates streets and spaces with soft, functional light that is completely at peace with its surroundings. CitySwan LED Gen3 can also be used to create colorful light moods to emphasize local identity or give urban spaces an innovative setting. This distinctive and elegant Urban Styling solution has a choice of mounting options including pole or suspended. It is also available as a wall-mounted luminaire and a bollard. The third generation of CitySwan LED integrates our latest round LED board for best-in-class performance and a wide range of color temperatures. It can also be configured with the System Ready (SR) driver, and one or two Zhaga-D4i (ZD4i) SR sockets. This makes it possible to connect the luminaire via our Interact proposition and add sensors using the bottom socket. The accessibility of CitySwan LED Gen3 has also been improved for even easier maintenance. Furthermore, every CitySwan LED Gen3 BPS639 luminaire is uniquely identifiable, thanks to the Signify Service tag app. By simply scanning a QR code, placed inside the door of the mast or directly on the luminaire, you can instantly access the configuration of the luminaire. This makes maintenance and programming operations faster and easier, and enables you to create a digital library of lighting assets and spare parts.

CitySwan LED gen3

Benefits

- Award-winning design with a unique aesthetic and perfect LED integration
- Patented glowing lighting technology for color-based guidance or communication
- One integrated concept for luminaires, brackets, and poles
- Future-ready with Zhaga-D4i SR sockets to connect with Interact controls and sensors
- Service tag for easy installation and maintenance

Features

- Choice of 2 designs and many mounting options: side entry, post-top, catenary, or central fixing
- LEDGINE inside, state-of-the-art, future-proof LED technology
- Choice of color temperatures and color rendering for different ambiances: 2200K, 2700K, 3000K and 4000K
- Efficacy up to 156 lm/W
- Marine salt protection
- 5-year standard warranty (option to extend up to 10 years)

Application

- Downtown, city center streets, roundabouts
- Residential streets, minor roads, car parks
- Pedestrian places, cycle paths and parks

Versions



CitySwan LED gen3 BWS639



CitySwan LED gen3 BPS639



CitySwan LED gen3 BRS639



CitySwan LED gen3 BDS639

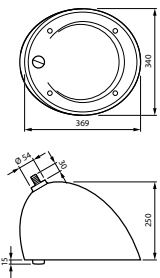
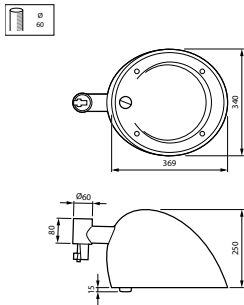
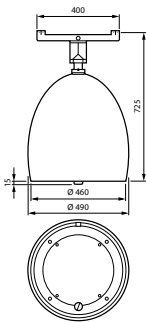
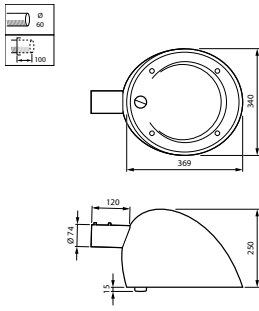
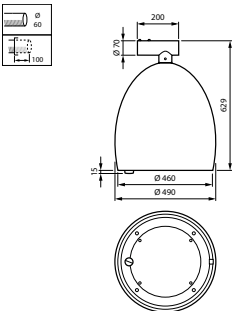
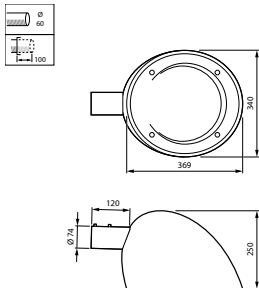
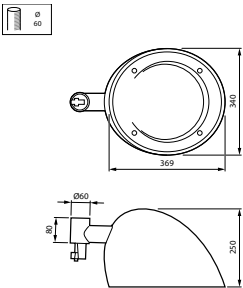


CitySwan LED gen3 BSS639



CitySwan LED gen3 BRS639

Dimensional drawing



Product details

CitySwan LED gen3 BPS639



CitySwan LED gen3 BPS639



CitySwan LED gen3 BRS639



CitySwan LED gen3 BSS639



General Information	
CE mark	Yes
Driver included	Yes
Flammability mark	-
Light source replaceable	Yes
Number of gear units	1 unit
Light Technical	
Luminaire light beam spread	-
Light source color	830 warm white
Correlated Color Temperature (Nom)	3000 K
Optical cover type	Flat glass
Standard tilt angle side entry	0°
Standard tilt angle posttop	0°
Upward light output ratio	0
Mechanical and Housing	
Housing Color	Opal
Approval and Application	
Mech. impact protection code	IK08
Ingress protection code	IP66
Surge Protection (Common/ Differential)	Luminaire surge protection level until 6 kV differential mode and 10 kV common mode
Application Conditions	
Maximum dim level	10%

General Information

Order Code	Full Product Name	Lamp family code	Product family code
919008635813	BPS639 LED40/830 MDM LOR GW CLO SRTB 10	LED40	BPS639
919008635816	BPS639 LED40/830 II MDM GW CLO SRTB C10K	LED40	BPS639
919008636282	BWS639 LED40/830 DK GW CLOSRTB SDM10E 10	LED40	BWS639
919008635817	BPS639 LED40/830 II MDM LOR GW CLO C10K	LED40	BPS639
919008635818	BRS639 LED40/830 II MDS GW CLO SRTB C10K	LED40	BRS639
919008636281	BDS639 LED70/830 II MDM GW CLO SRTB C10K	LED70	BDS639
919008635814	BSS639 LED60/830 II MDS GW CLO SRTB C10K	LED60	BSS639
919008635819	BRS639 LED40/830 II MDS GW CLO C10K	LED40	BRS639

Light Technical

Order Code	Full Product Name	Color rendering index (CRI)	Luminous Flux	Optic type outdoor
919008635813	BPS639 LED40/830 MDM LOR GW CLO SRTB 10	≥80	2,166 lm	Metronomis distribution medium
919008635816	BPS639 LED40/830 II MDM GW CLO SRTB C10K	≥80	3,192 lm	Metronomis distribution medium
919008636282	BWS639 LED40/830 DK GW CLOSRTB SDM10E 10	>80	3,382 lm	Distribution wet road (DK)
919008635817	BPS639 LED40/830 II MDM LOR GW CLO C10K	≥80	2,166 lm	Metronomis distribution medium

Order Code	Full Product Name	Color rendering index (CRI)	Luminous Flux	Optic type outdoor
919008635818	BRS639 LED40/830 II MDS GW CLO SRTB C10K	≥80	3,043 lm	Metronomis distribution symmetrical
919008636281	BDS639 LED70/830 II MDM GW CLO SRTB C10K	>80	5,780 lm	Metronomis distribution medium
919008635814	BSS639 LED60/830 II MDS GW CLO SRTB C10K	≥80	4,698 lm	Metronomis distribution symmetrical
919008635819	BRS639 LED40/830 II MDS GW CLO C10K	≥80	3,040 lm	Metronomis distribution symmetrical

Operating and Electrical

Order Code	Full Product Name	Power Consumption
919008635813	BPS639 LED40/830 MDM LOR GW CLO SRTB 10	31.5 W
919008635816	BPS639 LED40/830 II MDM GW CLO SRTB C10K	31.5 W
919008636282	BWS639 LED40/830 DK GW CLOSRTB SDM10E 10	31.5 W
919008635817	BPS639 LED40/830 II MDM LOR GW CLO C10K	31.5 W

Order Code	Full Product Name	Power Consumption
919008635818	BRS639 LED40/830 II MDS GW CLO SRTB C10K	31.5 W
919008636281	BDS639 LED70/830 II MDM GW CLO SRTB C10K	52 W
919008635814	BSS639 LED60/830 II MDS GW CLO SRTB C10K	43.5 W
919008635819	BRS639 LED40/830 II MDS GW CLO C10K	33 W

Controls and Dimming

Order Code	Full Product Name	Dimmable
919008635813	BPS639 LED40/830 MDM LOR GW CLO SRTB 10	Yes
919008635816	BPS639 LED40/830 II MDM GW CLO SRTB C10K	Yes
919008636282	BWS639 LED40/830 DK GW CLOSRTB SDM10E 10	Yes
919008635817	BPS639 LED40/830 II MDM LOR GW CLO C10K	No

Order Code	Full Product Name	Dimmable
919008635818	BRS639 LED40/830 II MDS GW CLO SRTB C10K	Yes
919008636281	BDS639 LED70/830 II MDM GW CLO SRTB C10K	Yes
919008635814	BSS639 LED60/830 II MDS GW CLO SRTB C10K	Yes
919008635819	BRS639 LED40/830 II MDS GW CLO C10K	No

