



# Superior Color Performance in Metal Halide Technology

## MasterColor CDM-TD

The MasterColor CDM metal halide lamps deliver consistent white light and higher color rendering than any standard metal halide source for architectural lighting. Tubular double-ended TD style for enclosed luminaires are ideal for accent lighting in indoor applications.

### Benefits

- Energy-efficient alternative to incandescent/halogen.
- Improved lumen maintenance over standard metal halide.

### Features

- Lifetime color stability within +/- 200k.
- Exceptional color rendering.
- Features FadeBlock™—an integrated UV blocking medium for reduced fading of fabrics and paintings.
- Available in 70W TD6 and 150W TD7.

### Application

- Ideal for display and accent lighting in retail, architectural applications.

### Warnings and Safety

- R "WARNING: These lamps can cause serious skin burn and eye inflammation from short wave ultraviolet radiation if outer envelope of the lamp is broken or punctured. Do not use where people will remain for more than a few minutes unless adequate shielding or other safety precautions are used. Certain lamps that will automatically extinguish when the outer envelope is broken or punctured are commercially available." This lamp complies with FDA radiation performance standard 21 CFR subchapter J. (USA:21 CFR 1040.30 Canada: SOR/DORS/80-381)

# MasterColor CDM-TD

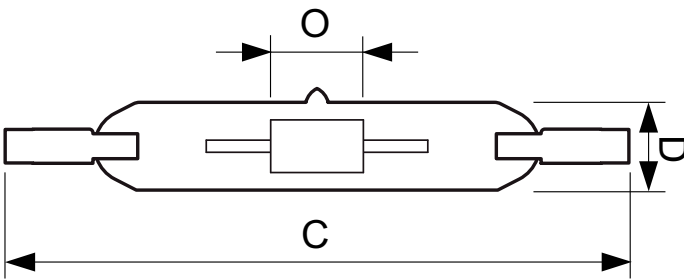
## Versions



CDM-TD, 70W

CDM-TD, 150W

## Dimensional drawing



| Product                               | D (max) | D O   | C (max)   |
|---------------------------------------|---------|-------|-----------|
| MasterColor CDM-TD 70W/830 RX7s T6 CL | 22 mm   | 8 mm  | 119.63 mm |
| MASTERColour CDM-TD 150W/942 RX7s 1CT | 22 mm   | 10 mm | 137.43 mm |
| MASTERColour CDM-TD 150W/830 RX7s 1CT | 22 mm   | 10 mm | 137.43 mm |

### Controls and Dimming

Dimmable No

### Operating and Electrical

Re-ignition Time (Min) (Max) 15 min

### General Information

Cap-Base RX7S

Life To 10% Failures (Nom) 13000 h

Life To 20% Failures (Nom) 15000 h

Life To 50% Failures (Nom) 16000 h

Life To 5% Failures (Nom) 9000 h

Operating Position P45

### Light Technical

Lumen Maintenance 2000 h (Min) 80 %

### Mechanical and Housing

Bulb Finish Clear

## Approval and Application

| Order Code   | Full Product Name                        | Energy Consumption<br>kWh/1000 h | Energy                    |                               |
|--------------|--|----------------------------------|---------------------------|-------------------------------|
|              |  |                                  | Efficiency Label<br>(EEL) | Mercury (Hg)<br>Content (Nom) |
| 928082205115 | MasterColor CDM-TD 70W/830<br>RX7s T6 CL | 78 kWh                           | A                         | 3.4 mg                        |
| 928083605133 | MASTERColour CDM-TD<br>150W/830 RX7s 1CT | 160 kWh                          | A+                        | 10.23 mg                      |
| 928084805133 | MASTERColour CDM-TD<br>150W/942 RX7s 1CT | 165 kWh                          | A+                        | 8.29 mg                       |

## Operating and Electrical (1/2)

## MasterColor CDM-TD

| Order Code   | Full Product Name                     | Lamp               |               |               |               |
|--------------|---------------------------------------|--------------------|---------------|---------------|---------------|
|              |                                       | Current (EM) (Nom) | Voltage (Max) | Voltage (Min) | Voltage (Nom) |
| 928082205115 | MasterColor CDM-TD 70W/830 RX7s T6 CL | 0.95 A             | 102 V         | 86 V          | 94 V          |
| 928083605133 | MASTERColour CDM-TD 150W/830 RX7s 1CT | 1.8 A              | 106 V         | 90 V          | 98 V          |

| Order Code   | Full Product Name                     | Lamp               |               |               |               |
|--------------|---------------------------------------|--------------------|---------------|---------------|---------------|
|              |                                       | Current (EM) (Nom) | Voltage (Max) | Voltage (Min) | Voltage (Nom) |
| 928084805133 | MASTERColour CDM-TD 150W/942 RX7s 1CT | 1.8 A              | 110 V         | 96 V          | 103 V         |

### Operating and Electrical (2/2)

| Order Code   | Full Product Name                     | Power (Rated) (Nom) |
|--------------|---------------------------------------|---------------------|
| 928082205115 | MasterColor CDM-TD 70W/830 RX7s T6 CL | 71.0 W              |
| 928083605133 | MASTERColour CDM-TD 150W/830 RX7s 1CT | 145.0 W             |

| Order Code   | Full Product Name                     | Power (Rated) (Nom) |
|--------------|---------------------------------------|---------------------|
| 928084805133 | MASTERColour CDM-TD 150W/942 RX7s 1CT | 150.0 W             |

### Luminaire Design Requirements

| Order Code   | Full Product Name                     | Bulb Temperature (Max) |
|--------------|---------------------------------------|------------------------|
| 928082205115 | MasterColor CDM-TD 70W/830 RX7s T6 CL | 500 °C                 |
| 928083605133 | MASTERColour CDM-TD 150W/830 RX7s 1CT | 650 °C                 |

| Order Code   | Full Product Name                     | Bulb Temperature (Max) |
|--------------|---------------------------------------|------------------------|
| 928084805133 | MASTERColour CDM-TD 150W/942 RX7s 1CT | 650 °C                 |

### Light Technical (1/3)

| Order Code   | Full Product Name                     | Chromaticity       |                    | Color |                 |
|--------------|---------------------------------------|--------------------|--------------------|-------|-----------------|
|              |                                       | Coordinate X (Nom) | Coordinate Y (Nom) | Code  | Designation     |
| 928082205115 | MasterColor CDM-TD 70W/830 RX7s T6 CL | 0.443              | 0.401              | 830   | Warm White (WW) |
| 928083605133 | MASTERColour CDM-TD                   | 0.437              | 0.399              | 830   | Warm White (WW) |

| Order Code   | Full Product Name                     | Chromaticity       |                    | Color |                 |
|--------------|---------------------------------------|--------------------|--------------------|-------|-----------------|
|              |                                       | Coordinate X (Nom) | Coordinate Y (Nom) | Code  | Designation     |
| 928084805133 | MASTERColour CDM-TD 150W/942 RX7s 1CT | 0.380              | 0.375              | 942   | Cool White (CW) |

### Light Technical (2/3)

| Order Code   | Full Product Name                     | Correlated Color  |                       | Color                 |                                 |                                |                                | Luminous                       |                        |                     |
|--------------|---------------------------------------|-------------------|-----------------------|-----------------------|---------------------------------|--------------------------------|--------------------------------|--------------------------------|------------------------|---------------------|
|              |                                       | Temperature (Nom) | Rendering Index (Min) | Rendering Index (Nom) | Lumen Maintenance 10000 h (Nom) | Lumen Maintenance 2000 h (Nom) | Lumen Maintenance 5000 h (Min) | Lumen Maintenance 5000 h (Nom) | Efficacy (rated) (Nom) | Luminous Flux (Nom) |
| 928082205115 | MasterColor CDM-TD 70W/830 RX7s T6 CL | 3000 K            | 77                    | 80                    | 70 %                            | 85 %                           | 70 %                           | 80 %                           | 85 lm/W                | 6000 lm             |
| 928083605133 | MASTERColour CDM-TD 150W/830 RX7s 1CT | 3000 K            | -                     | 88                    | 75 %                            | 90 %                           | 75 %                           | 85 %                           | 91 lm/W                | 13250 lm            |
| 928084805133 | MASTERColour CDM-TD 150W/942 RX7s 1CT | 4200 K            | -                     | 96                    | 70 %                            | 90 %                           | 75 %                           | 85 %                           | 91 lm/W                | 13750 lm            |

### Light Technical (3/3)

# MasterColor CDM-TD

| Order Code   | Full Product Name                     | Luminous Flux (Rated)<br>(Nom) |
|--------------|---------------------------------------|--------------------------------|
| 928082205115 | MasterColor CDM-TD 70W/830 RX7s T6 CL | 6000 lm                        |
| 928083605133 | MASTERColour CDM-TD 150W/830 RX7s 1CT | 12700 lm                       |

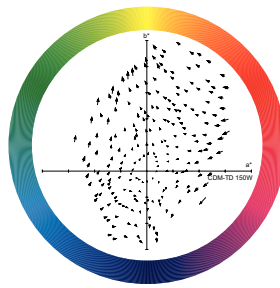
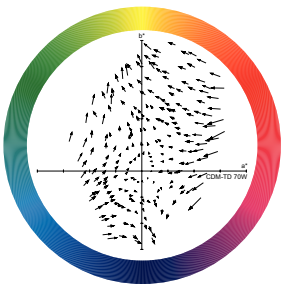
| Order Code   | Full Product Name                     | Luminous Flux (Rated)<br>(Nom) |
|--------------|---------------------------------------|--------------------------------|
| 928084805133 | MASTERColour CDM-TD 150W/942 RX7s 1CT | 13650 lm                       |

## Mechanical and Housing

| Order Code   | Full Product Name                     | Bulb Shape |
|--------------|---------------------------------------|------------|
| 928082205115 | MasterColor CDM-TD 70W/830 RX7s T6 CL | T22        |
| 928083605133 | MASTERColour CDM-TD 150W/830 RX7s 1CT | T25        |

| Order Code   | Full Product Name                     | Bulb Shape |
|--------------|---------------------------------------|------------|
| 928084805133 | MASTERColour CDM-TD 150W/942 RX7s 1CT | T25        |

## Color Rendering Diagrams



LDCR\_CDM-TD\_70W-Colour rendering diagram

LDCR\_CDM-TD\_150W-Colour rendering diagram

