

Long-lasting, reliable solution

HID-Basic BHL for HPL/HPI

Impregnated electromagnetic copper/iron ballasts for HPL, HPI (Plus) and SON-H lamps

Benefits

- Long-lasting reliable solution
- Minimal watt losses thanks to orthocyclic winding process
- Control gear can be installed remotely

Features

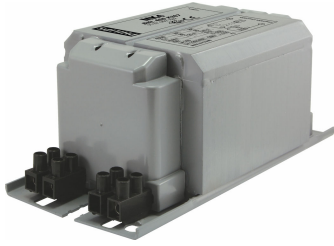
- Ballasts designed for mercury lamps (HPL) without using an ignitor can be also used with HPI lamps together with an ignitor
- Equipped with screw terminal blocks as standard; insert contacts available upon request
- Earthing-while-mounting facility
- Ballasts for alternative mains voltages/frequencies available upon request

Application

- Outdoor lighting

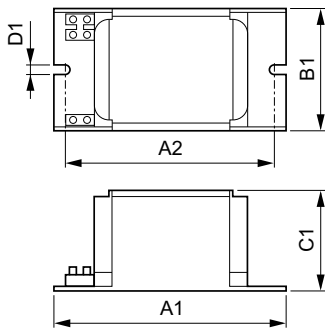
HID-Basic BHL for HPL/HPI

Versions



BHL 400 K202-A2 230V 50Hz BC2-151

Dimensional drawing



Product	D1	C1	A1	A2	B1
BHL 400 K202-A2 230V 50Hz BC2-151	6.2 mm	65.0 mm	150.0 mm	129.0 mm	76.0 mm

