



# Long-lasting, reliable solution

## HID-Basic BHL MK4 for HPL/HPI

Impregnated electromagnetic copper/iron ballasts for HPL, HPI (Plus) and SON-H lamps

### Benefits

- Long-lasting reliable solution protected from overheating; better for hot environments than its predecessors; extended warranty
- Minimal watt losses thanks to orthocyclic winding process
- Control gear can be installed remotely

### Features

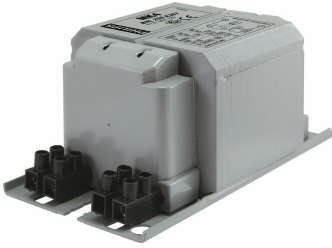
- Improved thermal features – much cooler ballast
- Ballasts designed for mercury lamps (HPL) without using an ignitor can also be used with HPI lamps with an ignitor
- Equipped with screw terminal blocks as standard; insert contacts available upon request
- Earthing-while-mounting facility
- Ballasts for alternative mains voltages/frequencies available upon request

### Application

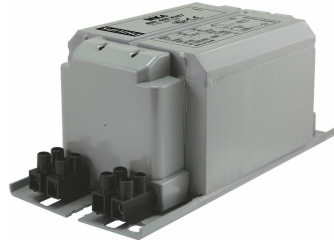
- Outdoor lighting

# HID-Basic BHL MK4 for HPL/HPI

## Versions

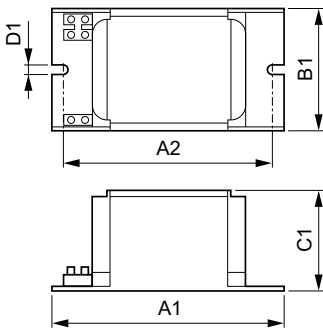


BHL 250 K307-A2 230/240V 50Hz BC2-134



BHL 400 K307-A2 230/240V 50Hz BC2-160

## Dimensional drawing



| Product                               | D1     | C1      | A1       | A2       | B1      |
|---------------------------------------|--------|---------|----------|----------|---------|
| BHL 250 K307-A2 230/240V 50Hz BC2-134 | 6.2 mm | 65.0 mm | 134.0 mm | 113.0 mm | 76.0 mm |
| BHL 400 K307-A2 230/240V 50Hz BC2-160 | 6.2 mm | 65.0 mm | 160.0 mm | 139.0 mm | 76.0 mm |

### Operating and Electrical

|                 |                          |
|-----------------|--------------------------|
| Input Frequency | 50 Hz                    |
| Input Voltage   | 230 V (default) or 240 V |

### General Information

|                 |              |
|-----------------|--------------|
| Number Of Lamps | 1 piece/unit |
| Lamp Type       | HPL/HPI      |

## System characteristics

| Order Code   | Full Product Name                     | Rated Ballast-Lamp Power |
|--------------|---------------------------------------|--------------------------|
| 913700278026 | BHL 250 K307-A2 230/240V 50Hz BC2-134 | 250 W                    |

| Order Code   | Full Product Name                     | Rated Ballast-Lamp Power |
|--------------|---------------------------------------|--------------------------|
| 913700278226 | BHL 400 K307-A2 230/240V 50Hz BC2-160 | 400 W                    |

## HID-Basic BHL MK4 for HPL/HPI

