



# Long-lasting, reliable solution

## HID-Basic BSN/BMH MK4 semi-parallel for SON/CDO/CDM/MH/HPI

Impregnated electromagnetic copper ballasts for use with an external semi-parallel ignitor for CDM, CDO, MH, HPI (Plus) and SON lamps

### Benefits

- System design: one ignitor SKD578 can trigger all lamps from 35 to 600 W
- Long-lasting reliable solution protected from overheating; better for hot environments than its predecessors; extended warranty
- Minimal watt losses thanks to orthocyclic winding process

### Features

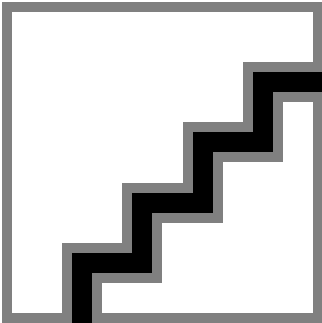
- Improved thermal features – much cooler ballast
- All ballasts are equipped with ThermoSwitch for protection against end-of-lamp-life phenomena
- Ballast can also be used in combination with series (superimposed) ignitor
- Equipped with screw terminal blocks as standard; insert contacts available upon request
- Ballasts for alternative mains voltages/frequencies available upon request

### Application

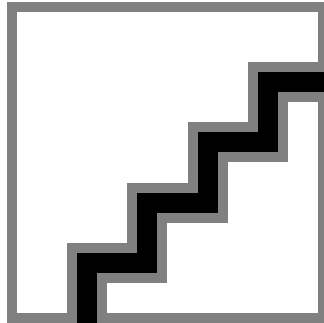
- Outdoor lighting
- Horticulture

# HID-Basic BSN/BMH MK4 semi-parallel for SON/CDO/CDM/MH/HPI

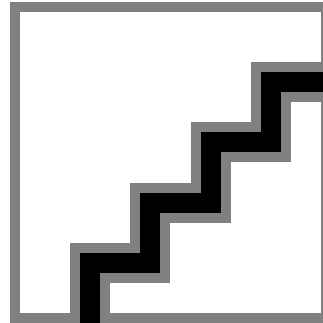
## Versions



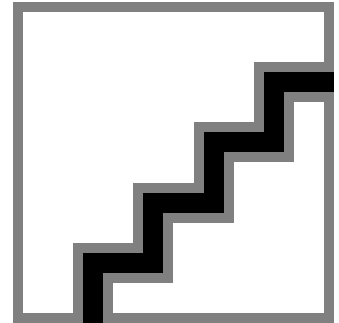
BSN 400 K407-A2-ITS 230/240V 50Hz BC3



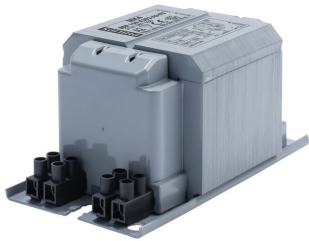
BSN 50 K302-A2-ITS 230V 50Hz



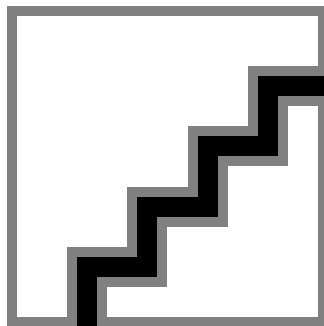
BSN 70 K302-A2-ITS 230V 50Hz



BSN 100 K302-A2-ITS 230V 50Hz

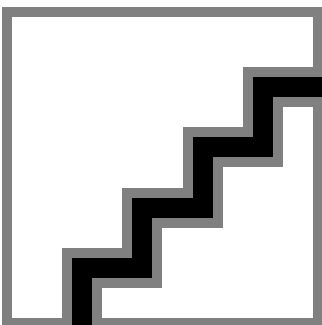
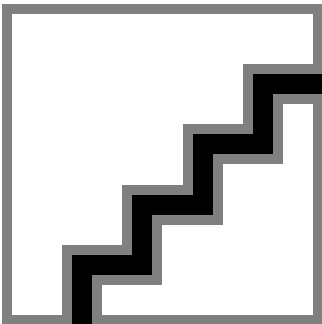


BSN 150 K302-A2-ITS 230V 50Hz



BSN 250 K302-A2-ITS 230V 50Hz

## Dimensional drawing



Product	A1	A2	B1	C1	D1
BSN 50 K302-A2-ITS 230V 50Hz	118 mm	94 mm	61 mm	52 mm	6.2 mm
BSN 100 K302-A2-ITS 230V 50Hz	123 mm	98 mm	61 mm	52 mm	6.2 mm
BSN 250 K302-A2-ITS 230V 50Hz	160 mm	139 mm	76 mm	65 mm	6.2 mm
BSN 150 K302-A2-ITS 230V 50Hz	134 mm	113 mm	76 mm	65 mm	6.2 mm
BSN 70 K302-A2-ITS 230V 50Hz	118 mm	94 mm	61 mm	52 mm	6.2 mm

Product	D1	C1	A1	A2	B1	B2
BSN 400 K407-A2-ITS 230/240V 50Hz BC3	6.5 mm	83.0 mm	166.0 mm	145.0 mm	97.0 mm	78.5 mm

# HID-Basic BSN/BMH MK4 semi-parallel for SON/CDO/CDM/MH/HPI

## Operating and Electrical

Input Frequency 50 Hz

## General Information

Number Of Lamps 1 piece/unit

## Operating and Electrical

Order Code	Full Product Name	Input Voltage
913700277826	BSN 400 K407-A2-ITS 230/240V 50Hz BC3	230 V (default) or 240 V
913700751926	BSN 50 K302-A2-ITS 230V 50Hz	230 V
913700752126	BSN 70 K302-A2-ITS 230V 50Hz	230 V

Order Code	Full Product Name	Input Voltage
913700752326	BSN 100 K302-A2-ITS 230V 50Hz	230 V
913700752626	BSN 150 K302-A2-ITS 230V 50Hz	230 V
913700752926	BSN 250 K302-A2-ITS 230V 50Hz	230 V

## General Information

Order Code	Full Product Name	Lamp Type
913700277826	BSN 400 K407-A2-ITS 230/240V 50Hz BC3	SON/HPI
913700751926	BSN 50 K302-A2-ITS 230V 50Hz	SON/CDO
913700752126	BSN 70 K302-A2-ITS 230V 50Hz	SON/CDO

Order Code	Full Product Name	Lamp Type
913700752326	BSN 100 K302-A2-ITS 230V 50Hz	SON/CDO
913700752626	BSN 150 K302-A2-ITS 230V 50Hz	SON/MH/CDM/CDO
913700752926	BSN 250 K302-A2-ITS 230V 50Hz	SON/MH/CDM/CDO

## System characteristics

Order Code	Full Product Name	Rated Ballast-Lamp
		Power
913700277826	BSN 400 K407-A2-ITS 230/240V 50Hz BC3	400 W
913700751926	BSN 50 K302-A2-ITS 230V 50Hz	50 W
913700752126	BSN 70 K302-A2-ITS 230V 50Hz	70 W

Order Code	Full Product Name	Rated Ballast-Lamp
		Power
913700752326	BSN 100 K302-A2-ITS 230V 50Hz	100 W
913700752626	BSN 150 K302-A2-ITS 230V 50Hz	150 W
913700752926	BSN 250 K302-A2-ITS 230V 50Hz	250 W

